

O ANATOMIJI

Dr Milena Đorđević

2024.

- morfologija životinja o građi
- fiziologija životinja o funkciji

PODELA ANATOMIJE

- Makroskopska i mikroskopska
- Zootomia, phytotomia i anthropotomia
- Sistematska i topografska
- Specijalna i komparativna
- Rendgenska, ultrazvučna anatomija

Grane sistematske anatomije

1. Osteologija
2. Syndesmologia
3. Myologia
4. Splanchnologia
5. Angiologia
6. Neurologia
7. Aesthesiologia

Sisari:

- Equus caballus i equus asinus
- Bos taurus
- Ovis aries
- Capra hircus
- Sus scrofa domesticus
- Canis familiaris i felis domestica

Ptice (živina)

- *Galus domesticus*
- *Meleagris gallopavo*
- *Anser domesticus*
- *Anas domestica*

Sklelet - skeletum

- Funkcija skeleta

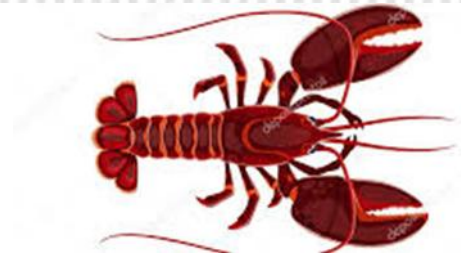
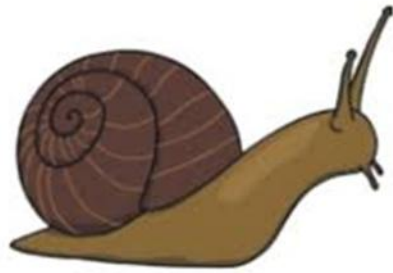
Daje telu črstinu

Oslonac za mišiče

Štiti organe

Stvaranje elemenata krvi u kosnoj srži

- Ribe, vodozemci, gmizavci, ptice i sisari su **vertebrate**
- Delovi tela kičmenjaka :glava, trup i ekstremiteti
- lobanja štiti mozak i čula
- kičma je osovina a grudni koš štiti pluća i srce
- ekstremiteti su po istom principu građeni kod svih osim kod riba- spojeni sa kičmom pomoću lopatice i karlične kosti), zatim dogačka kost, 2 dogačke kosti, kratke kosti zgloba i falange prstiju)



fish

chicken

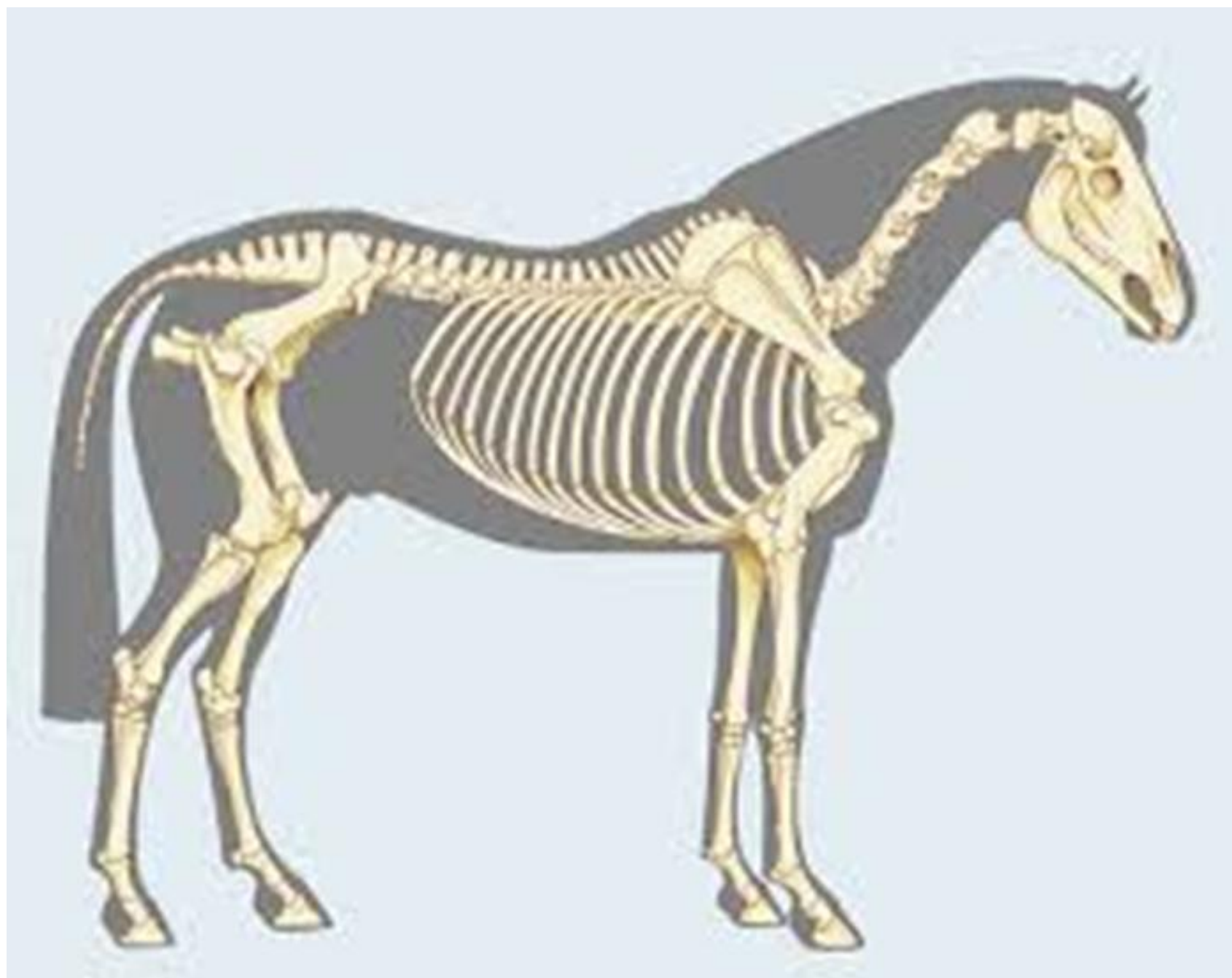


cow

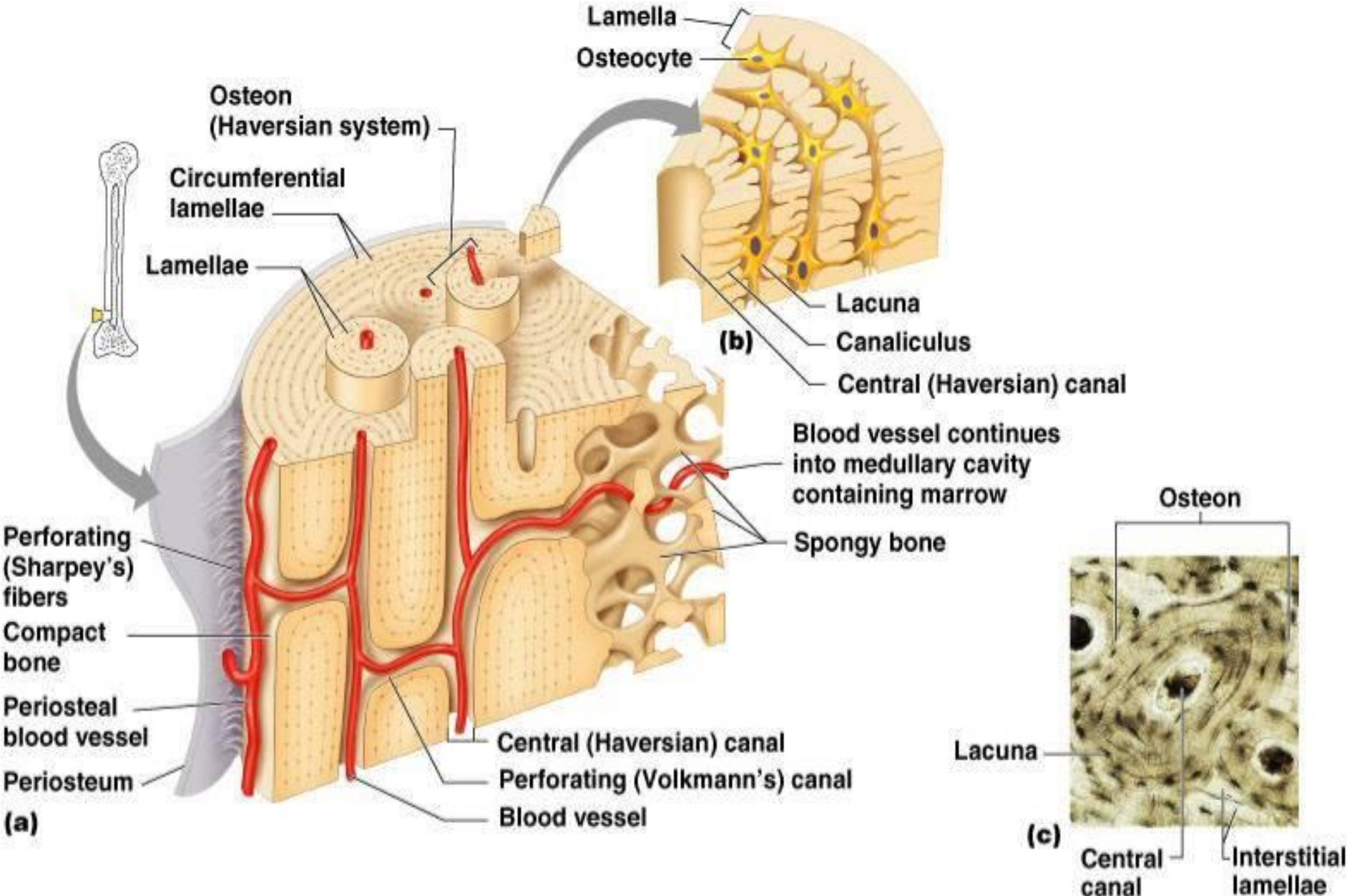


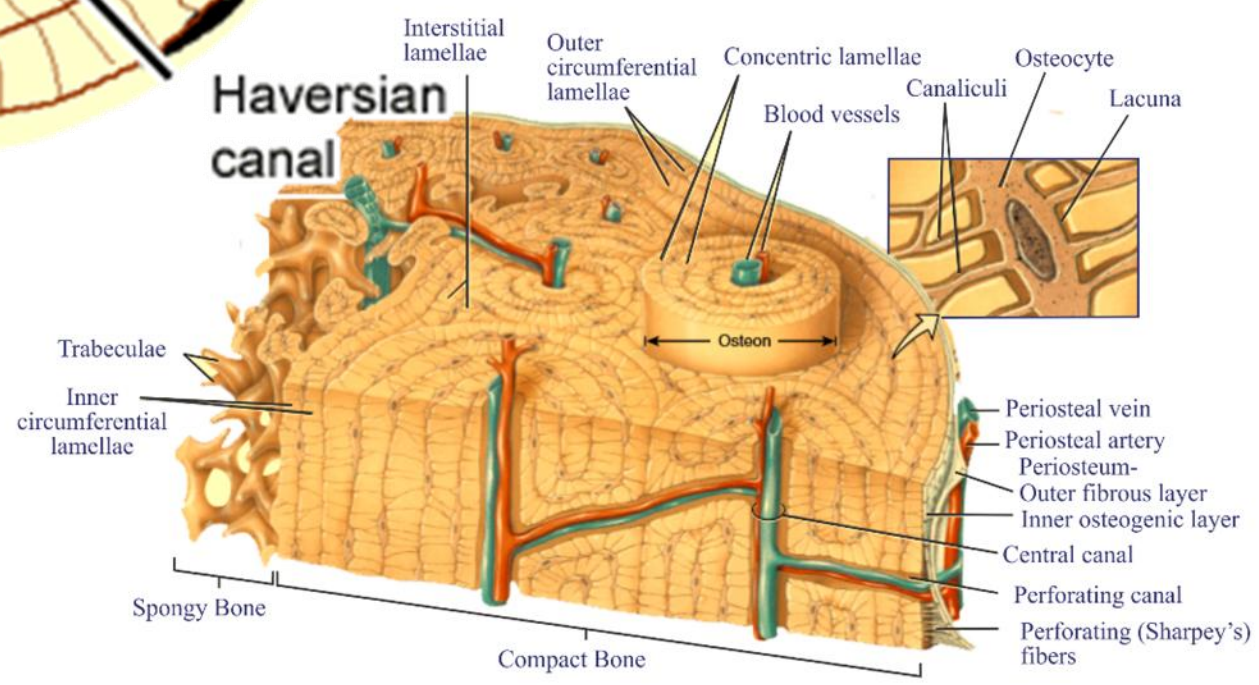
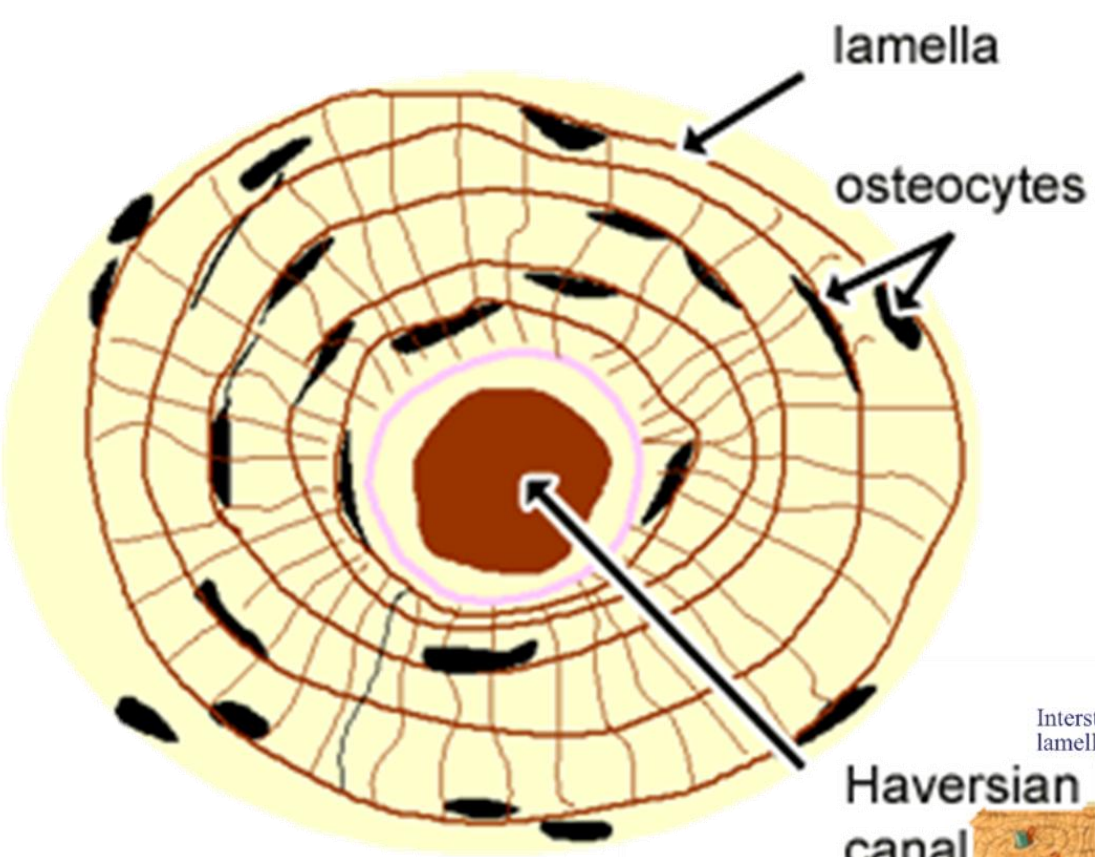
crocodile

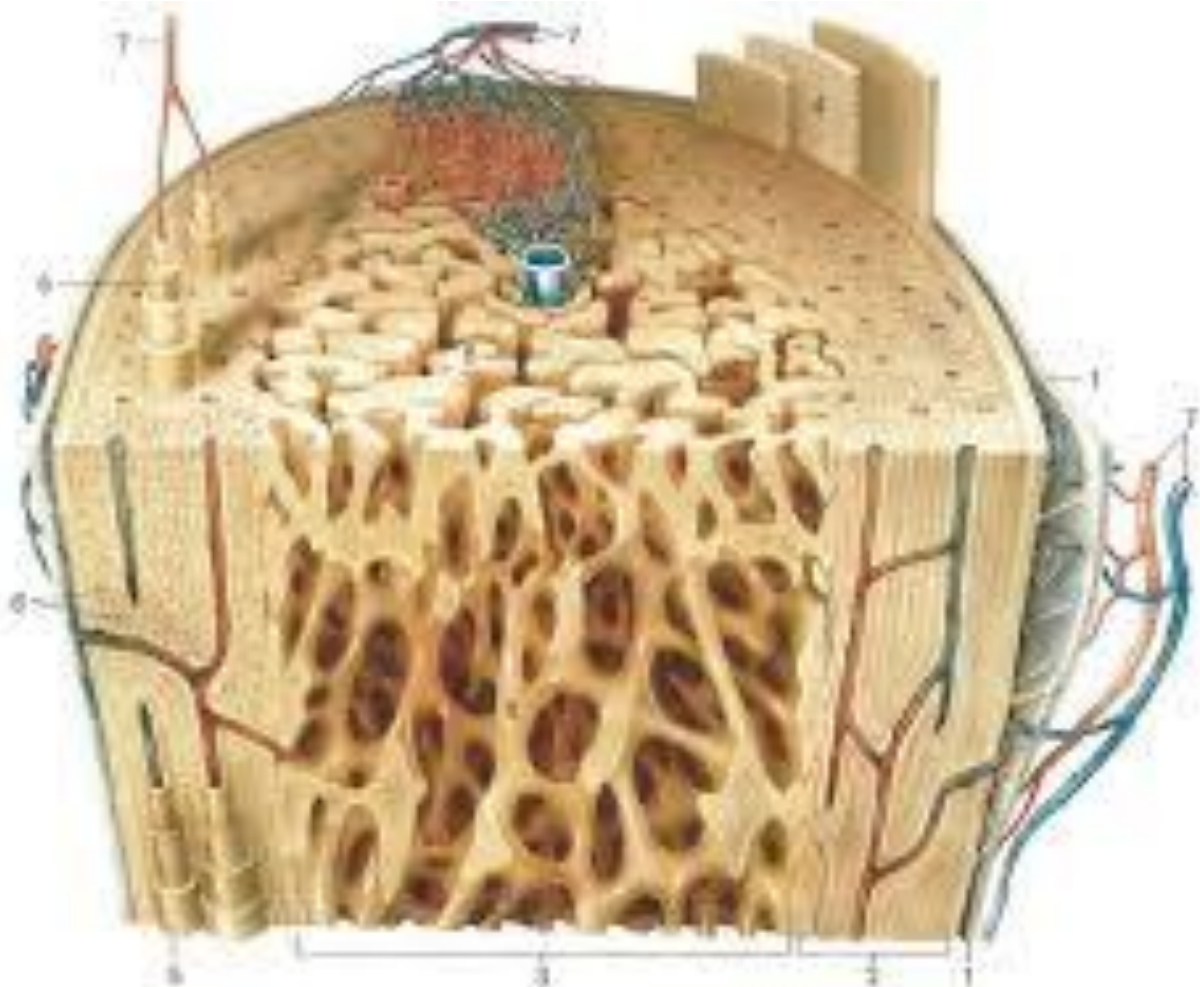




GRAĐA KOSTIJU





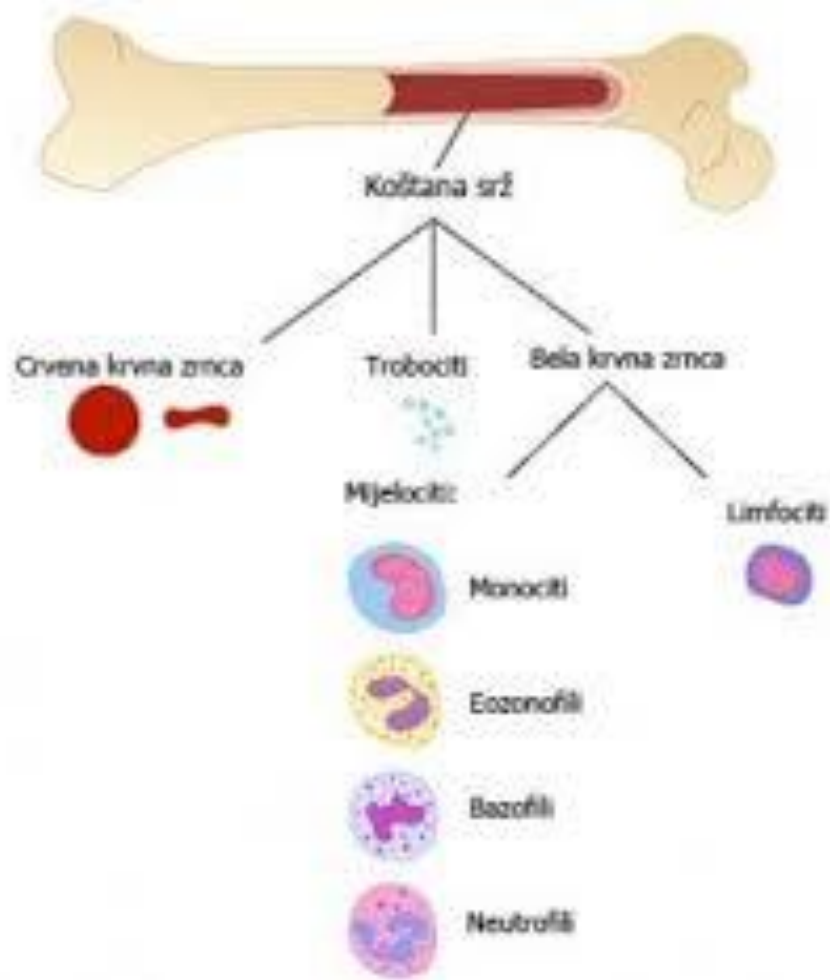


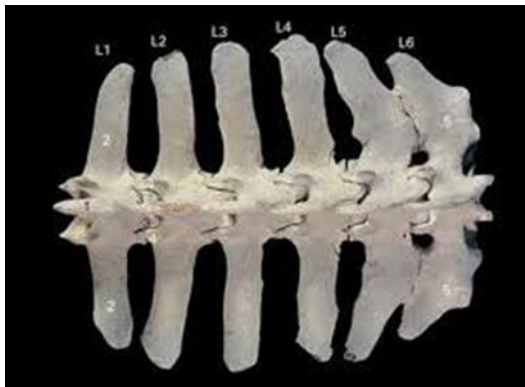
- | | | | |
|---------------|------------------|----------------|-------------------|
| 1 Knochenhaut | 3 Spongiosa | 5 Osteon | 7 Blutgefäß |
| 2 Compacta | 4 Äußere Lamelle | 6 Knochenkanal | 8 Knochenstäbchen |



FIGURE 1



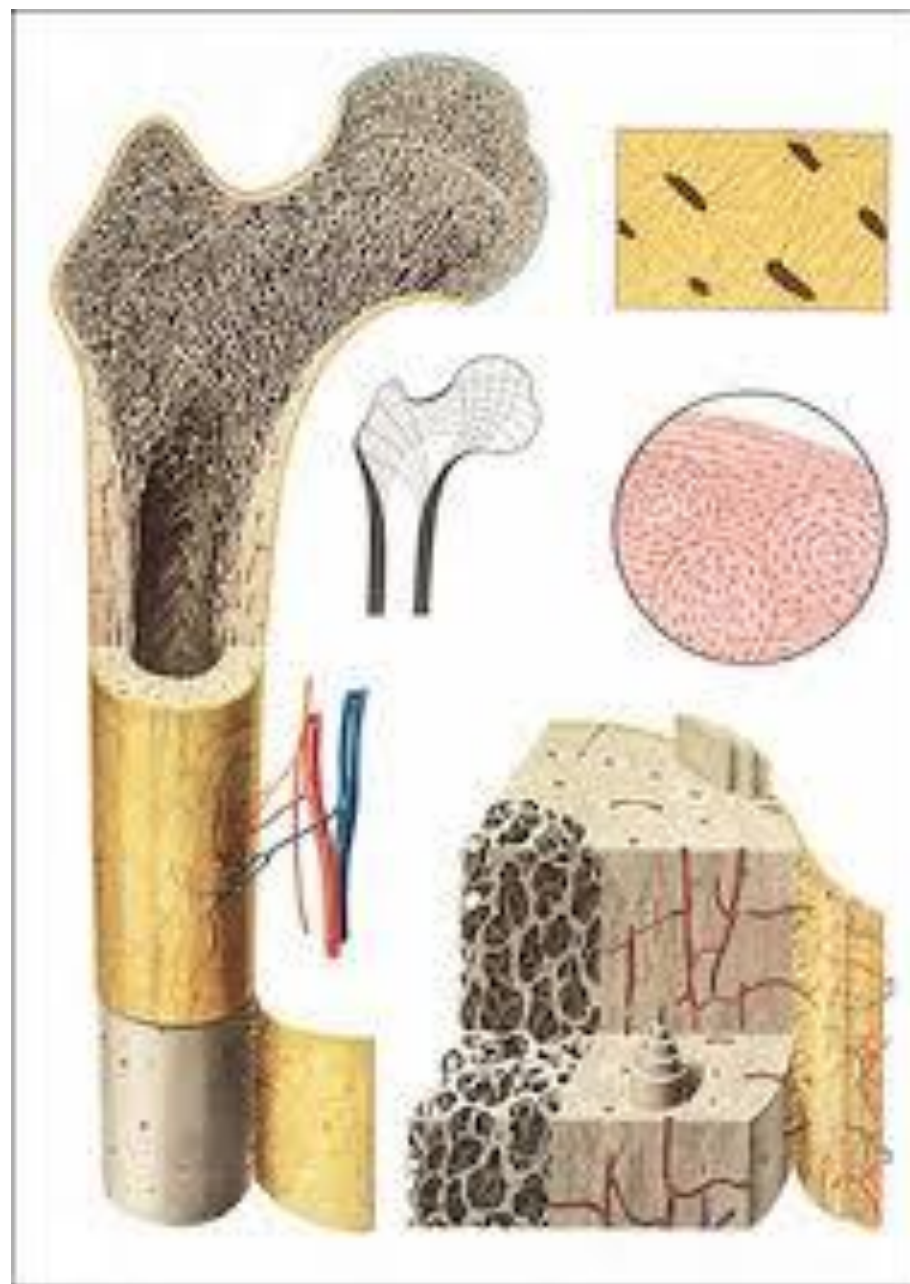




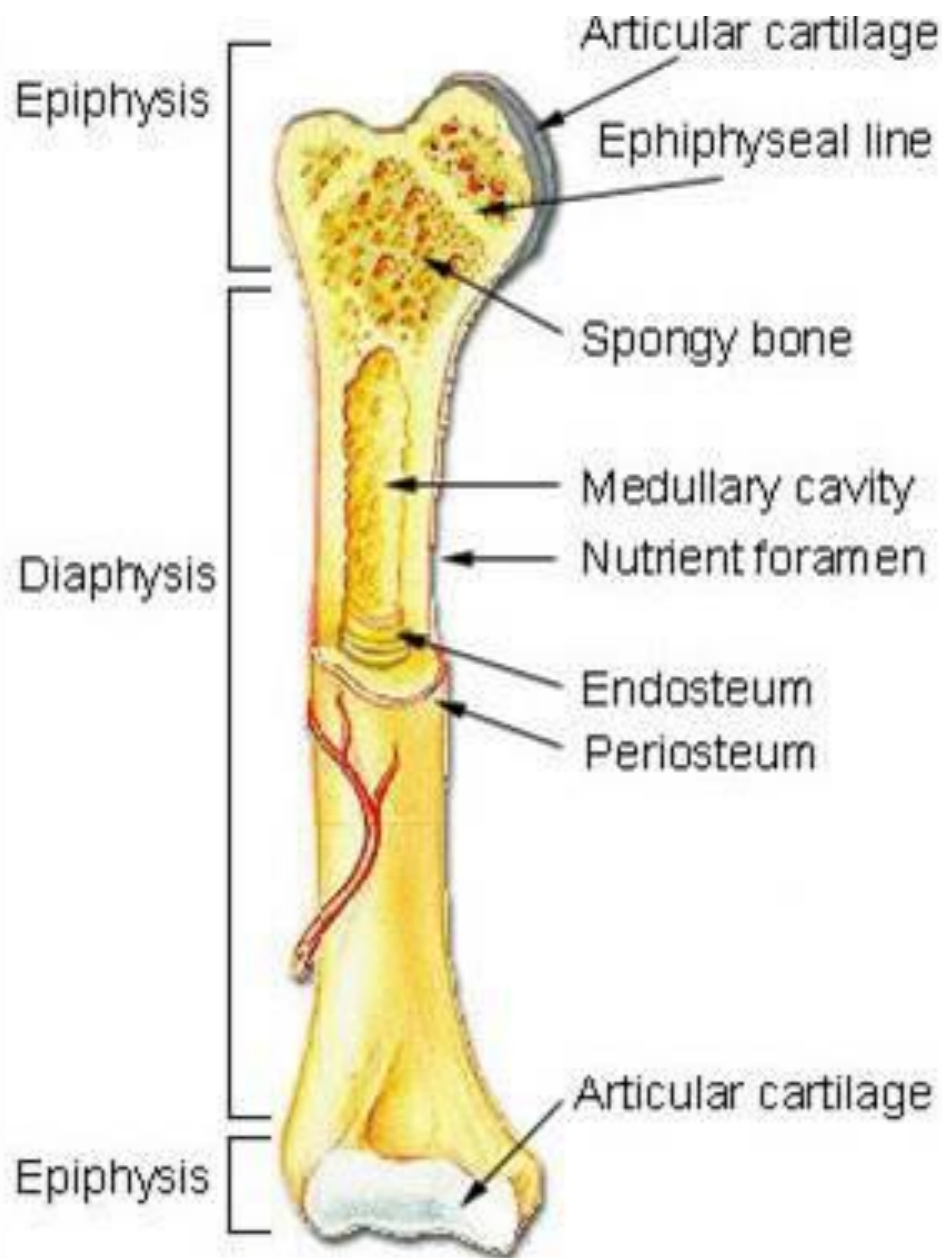








OSSA LONGA – DUGE KOSTI



**TELO OD KOMPAKTNE
KOŠTANE MASE**

**OKRAJCI OD
SUNĐERASTE
KOŠTANE MASE**

PERIOSTEUM POKOSNICA

CAVUM MEDULLARE

ŠUPLJINA KOSTI

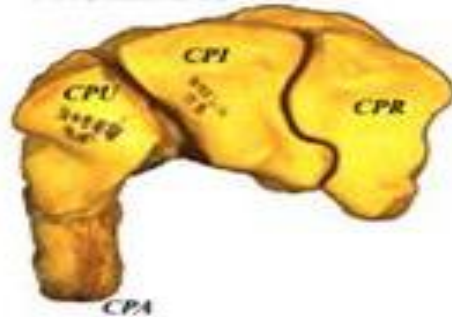
DIAPHYSIS TELO KOSTI

EPIPHYSIS OKRAJCI

LEFT CARPALS - LATERAL VIEW



LEFT CARPALS PROXIMAL VIEW

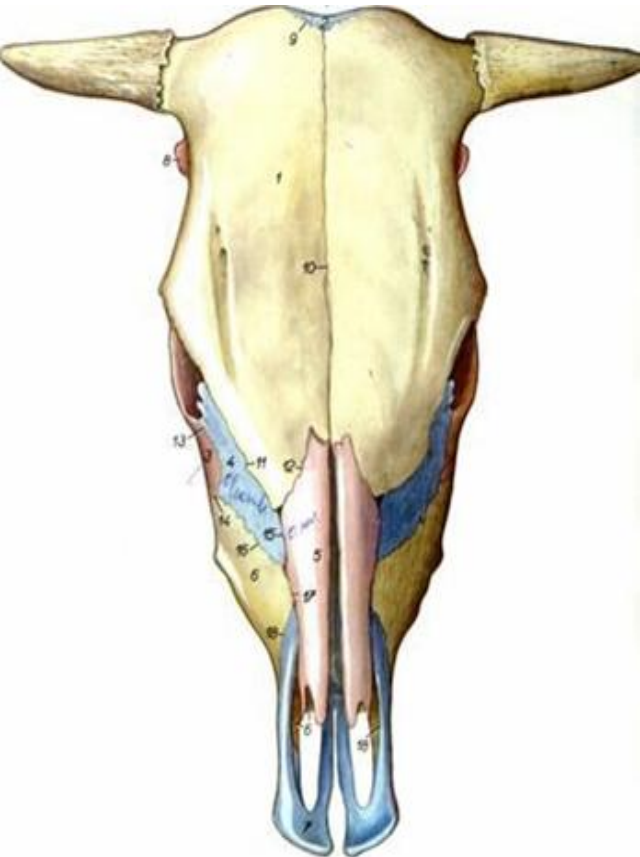
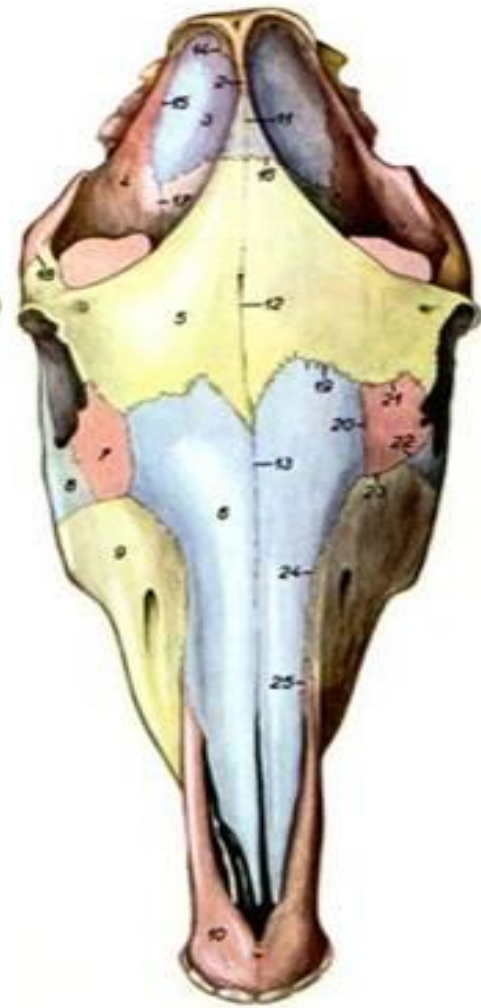
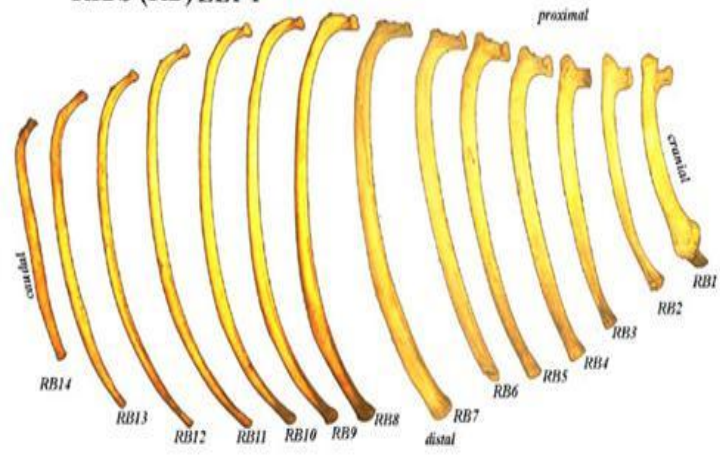


LEFT CARPALS CRANIAL VIEW



OSSA BREVIA

RIBS (RB) LEFT



OSSA PLANA

Scapula

Lateral View

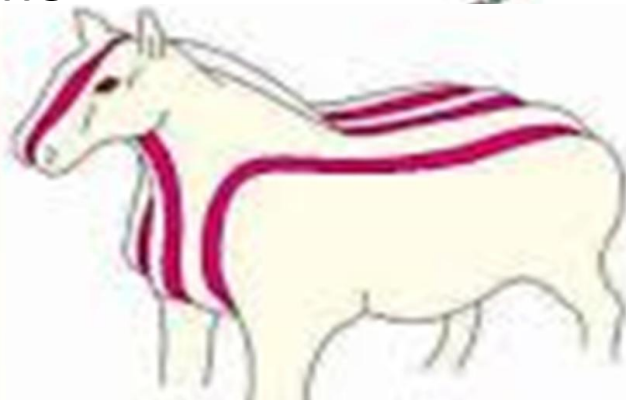
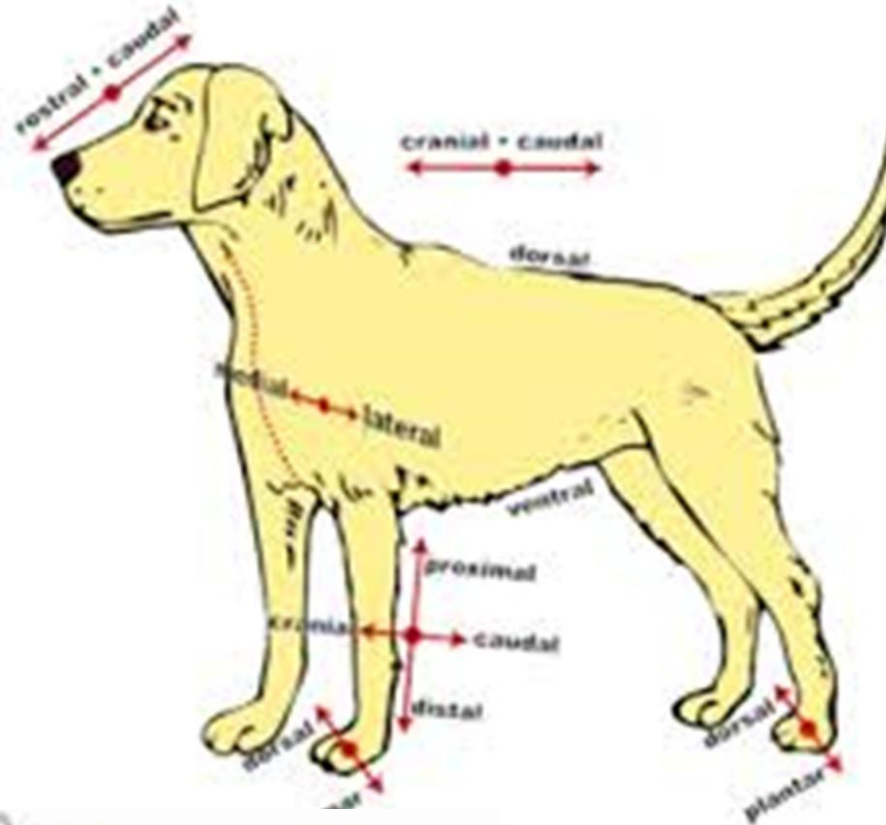




OSSA IRREGULARIA

Anatomski termini

1. Cranialis
2. Caudalis
3. Lateralis
4. Medialis
5. Sagittalis
6. Transversalis
7. Rostralis
8. Nasalis
9. Oralis



10. dorsalis

11. ventralis

NA EKSTREMITETIMA

Cranialis - dorsalis

Caudalis - palmaris na prednjim ekstremitetima
plantaris na zadnjim ekstremitetima

Nazivi pojedinih delova kostiju

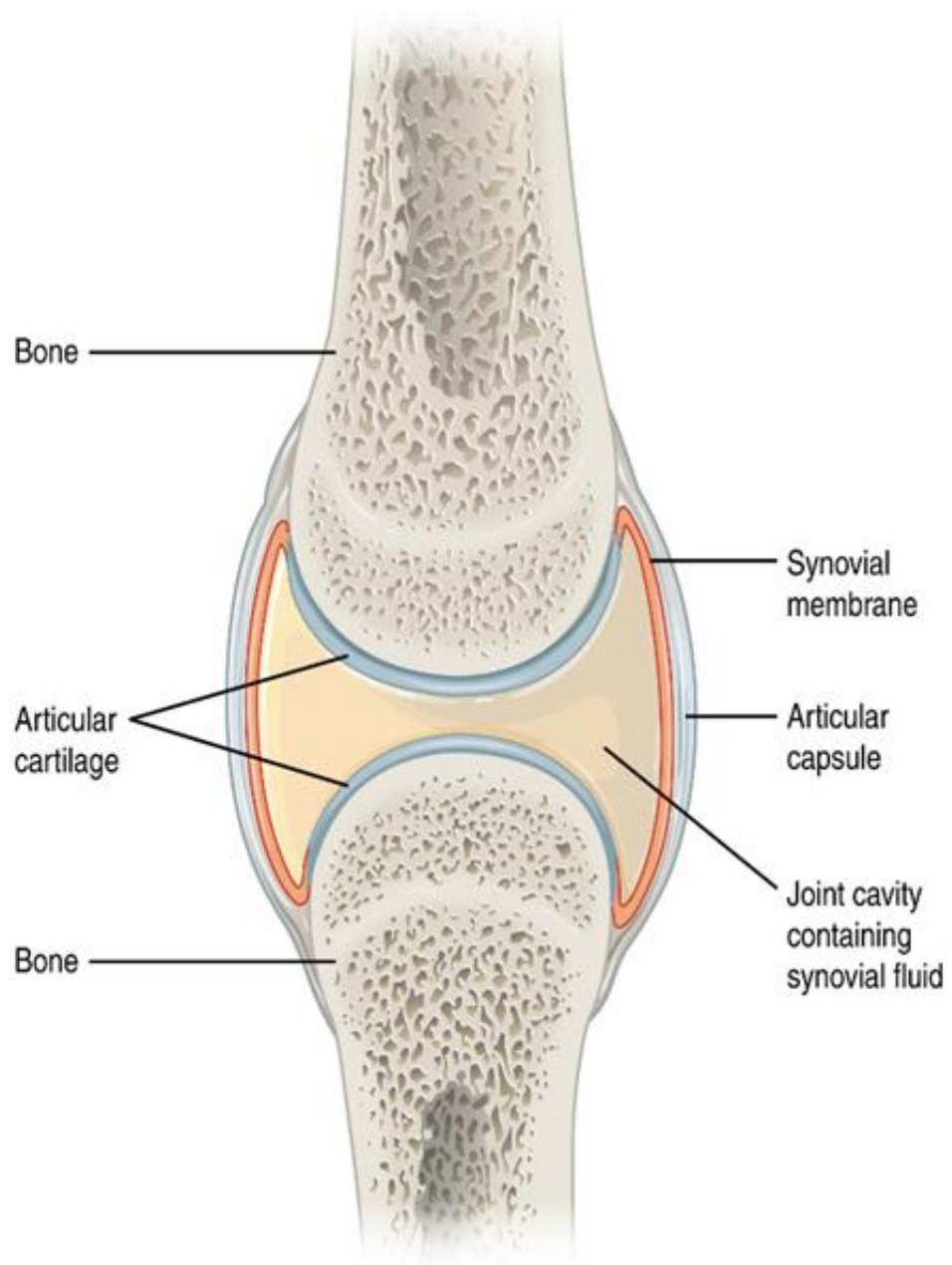
1. Corpus
2. Extremitas
3. Diaphysis /epiphysis
4. Caput
5. Capitulum
6. Processus
7. Ala
8. Tuber
9. Tuberculum

1. Tuberositas
2. Condylus
3. Trochlea
4. Trochanter
5. Spina
6. Crista
7. Facies
8. Margo
9. Angulus

1. Fossa
2. Fovea
3. Foramen
4. Canalis
5. Sulcus
6. Incisura
7. Fissura
8. Spatium
9. Cavum
10. Sinus

POKRETNE VEZE KOSTIJU

- SYNCHONDROSIS POMOĆU HRSKAVICE
- SYNDESMOSIS VEZIVNIM TKIVOM
- SYNSARCOSIS POMOĆU MIŠIĆA
- DIARTHROSIS ZGLOBNA VEZA



TO JE TO ZA DANAS!