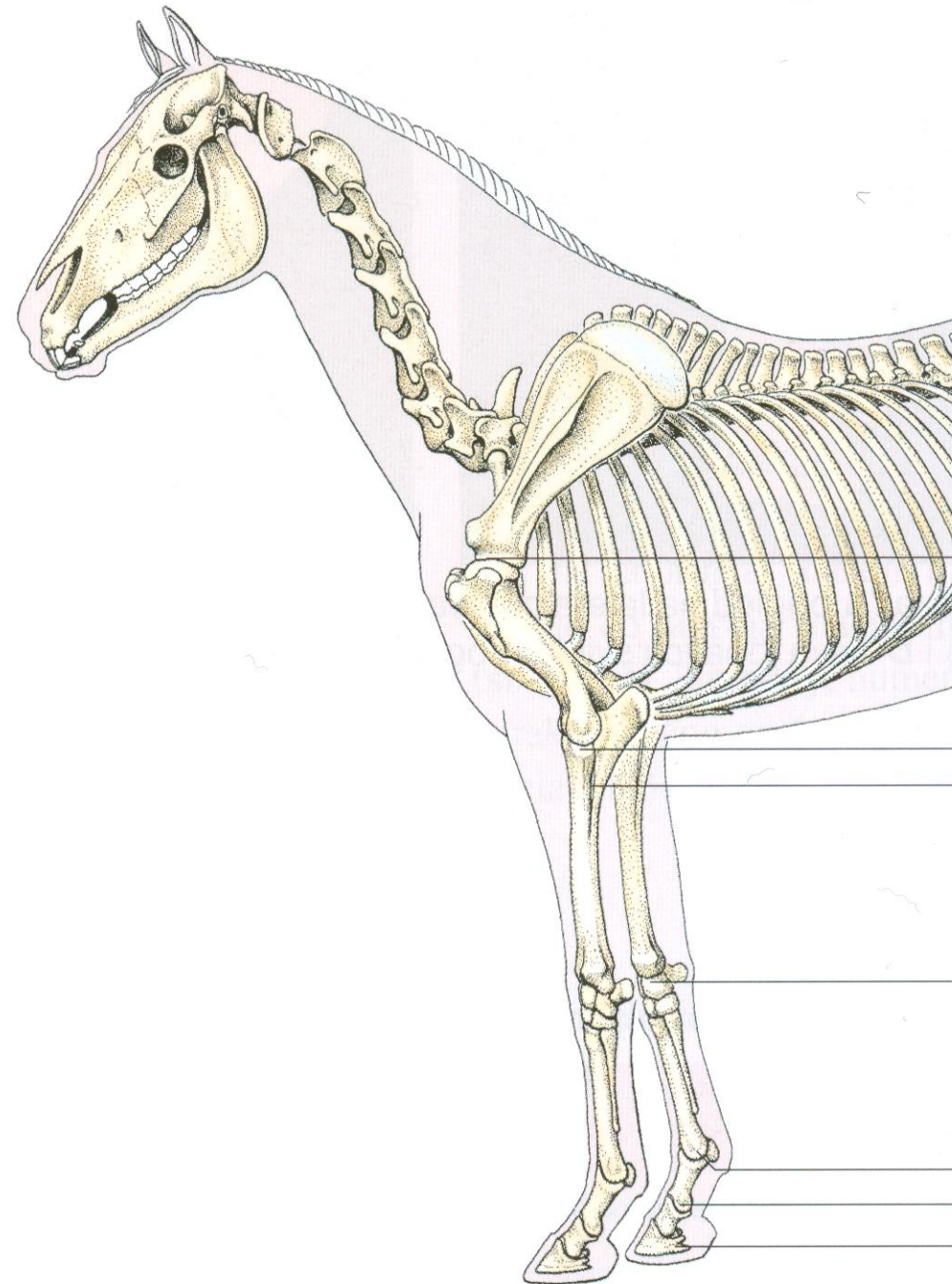


# KOSTI PREDNJEG EKSTREMITETA

Dr Milena Đorđević 2024.



**Art. humeri**

**Art. cubiti**  
**Art. radioulnaris**

**Art. carpi**  
Art. antebrachiocarpea  
Art. mediocarpea  
Art. carpometacarpea  
Art. intercarpea  
Art. ossis carpi accessorii

**Art. metacarpophalangea**  
**Art. interphalangea proximalis**  
**Art. interphalangea distalis**

# KOSTI PREDNJEG EKSTREMITETA

SCAPULA LOPATICA

HUMERUS LAKATNA KOST

OSSA ANTEBRACHI PODLAKTNE  
KOSTI

a) RADIUS ŽBICA

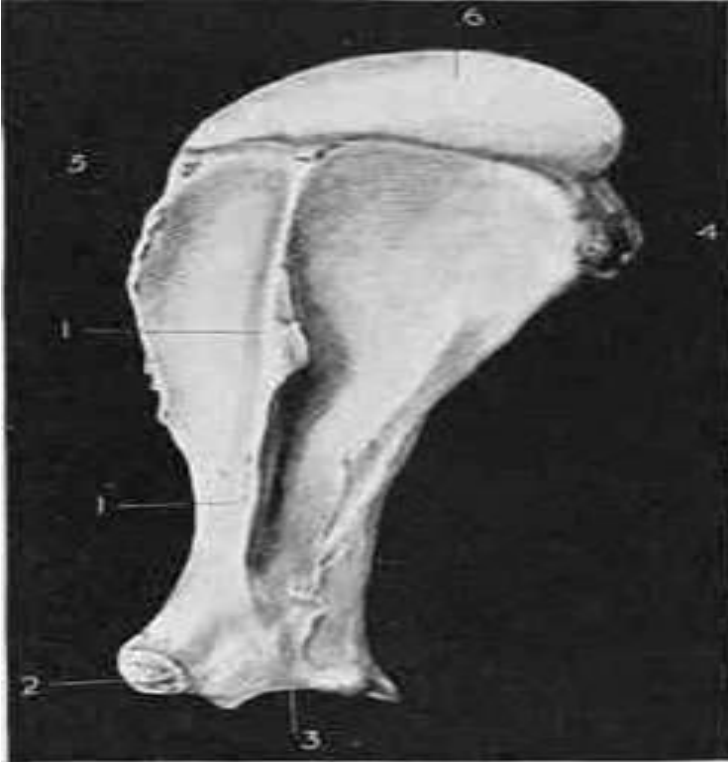
b) ULNA LAKATNA KOST

OSSA CARPI – PREDNJE KOLENO

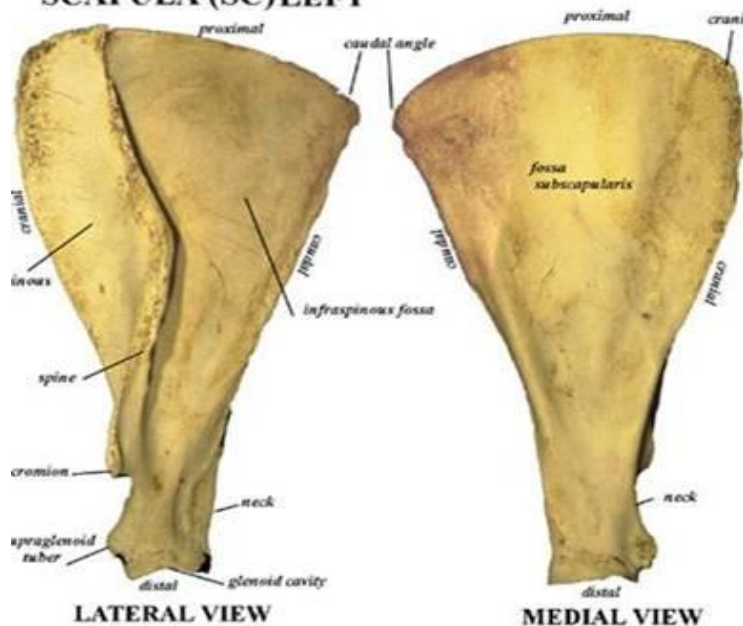
OSSA METACARPI PREDNJA  
CEVANICA

PHALANGES – ČLANCI PRSTIJU

OSSA SESAMOIDEA SEZAMOIDNE  
KOSTI



SCAPULA (SC) LEFT



# SCAPULA - LOPATICA

## FACIES LATERALIS

### SPINA SCAPULAE

GREBEN LOPATICE

### FOSSA SUPRASPINATA

PREDGREBENSKA POVRŠINA

### FOSSA INFRASPINATA

ZAGREBENSKA POVRŠINA

### COLLUM SCAPULAE VRAT

### CAVITAS GLENOIDALIS ČAŠICA

### CARTILAGO SCAPULAE HRŠKAVICA

## FACIES MEDIALIS

### FOSSA SUBSCAPULARIS

PODLOPATIČNA UDUBINA

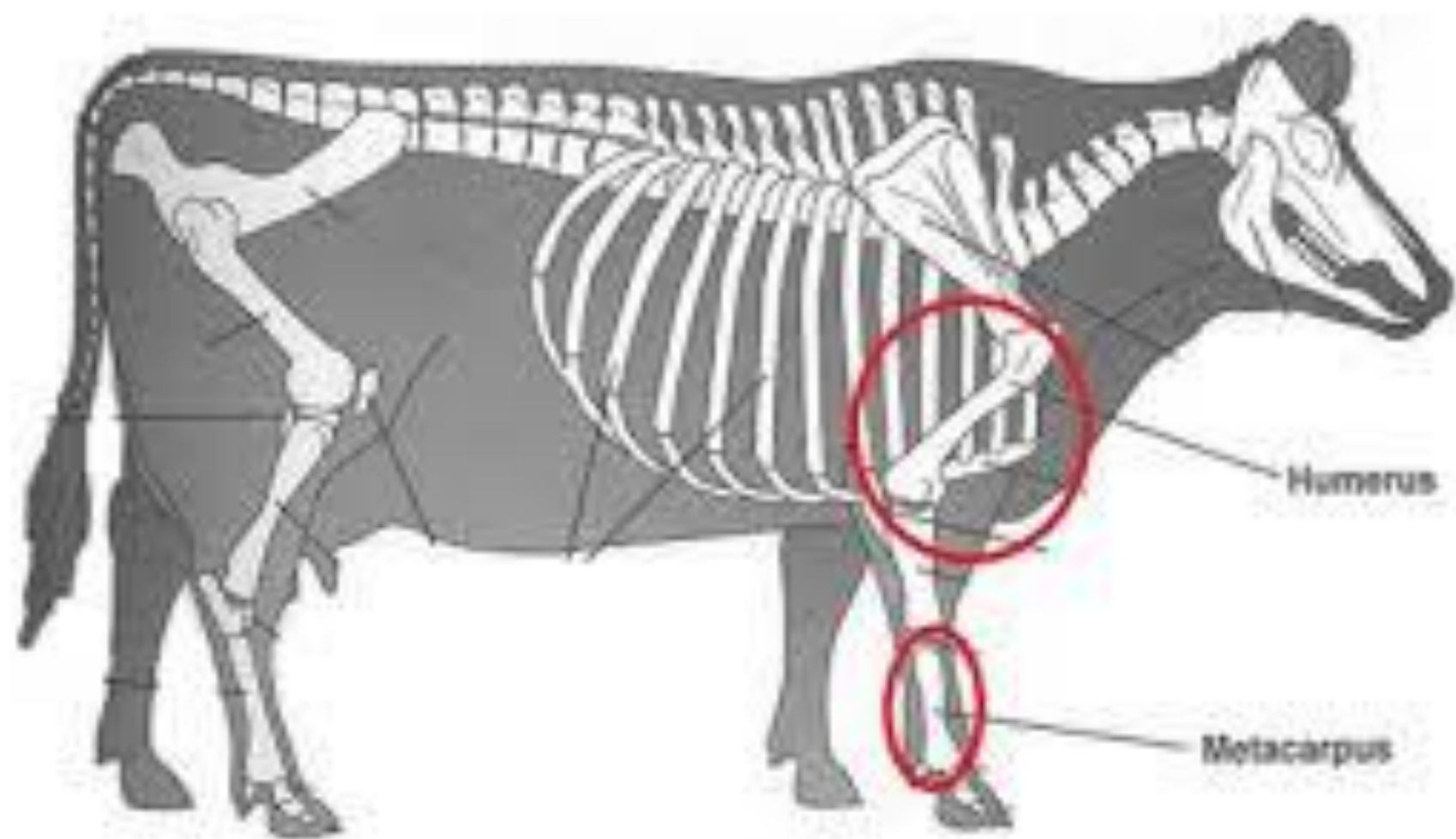
### FACIES SERATA

HRAPAVA POVRŠINA

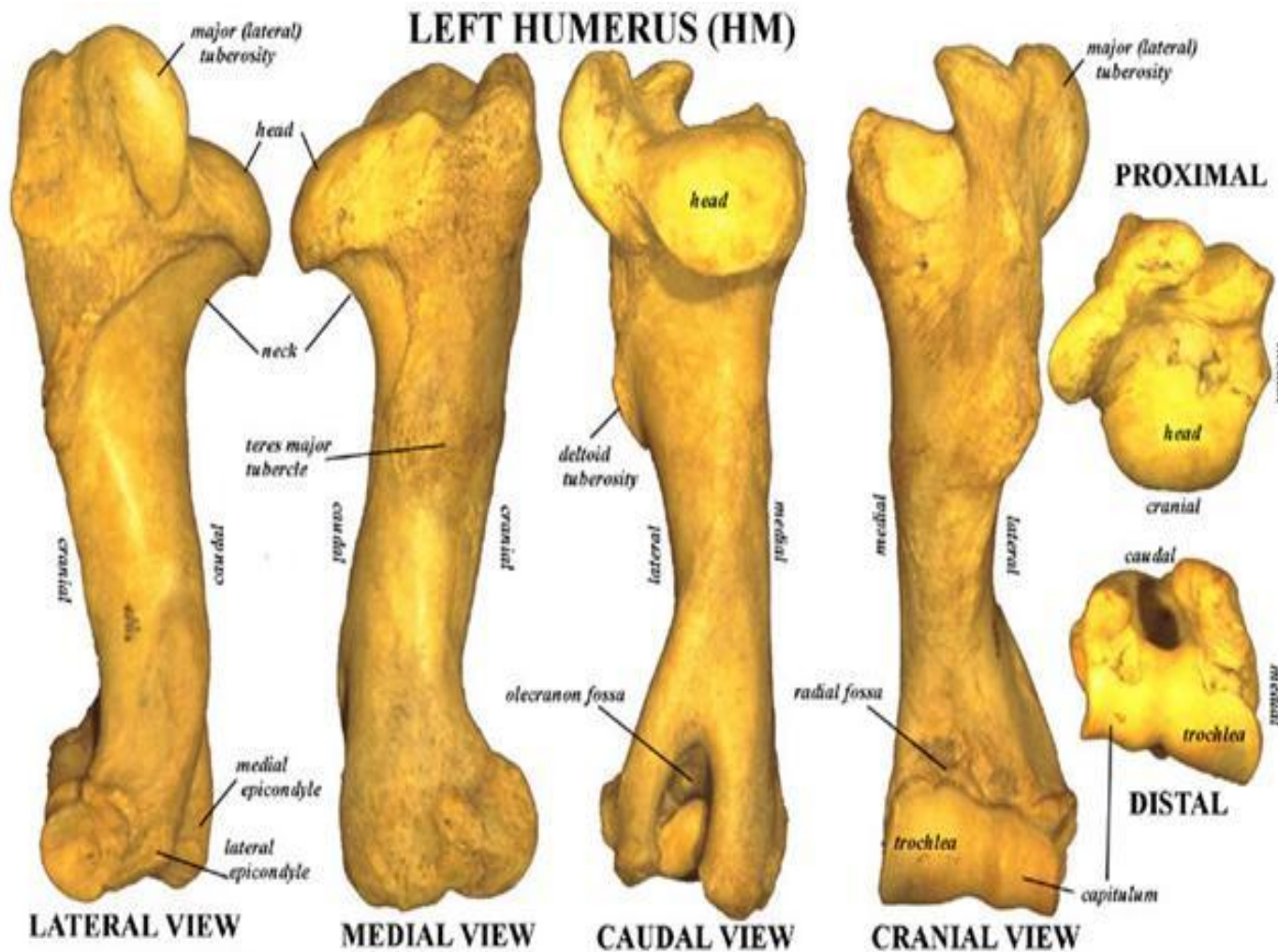
# Scapula

Lateral View





# HUMERUS – RAMENA KOST



LATERAL VIEW

MEDIAL VIEW

CAUDAL VIEW

CRANIAL VIEW

© L.C. Todd

CAPUT HUMERI

GLAVA

CORPUS HUMERI

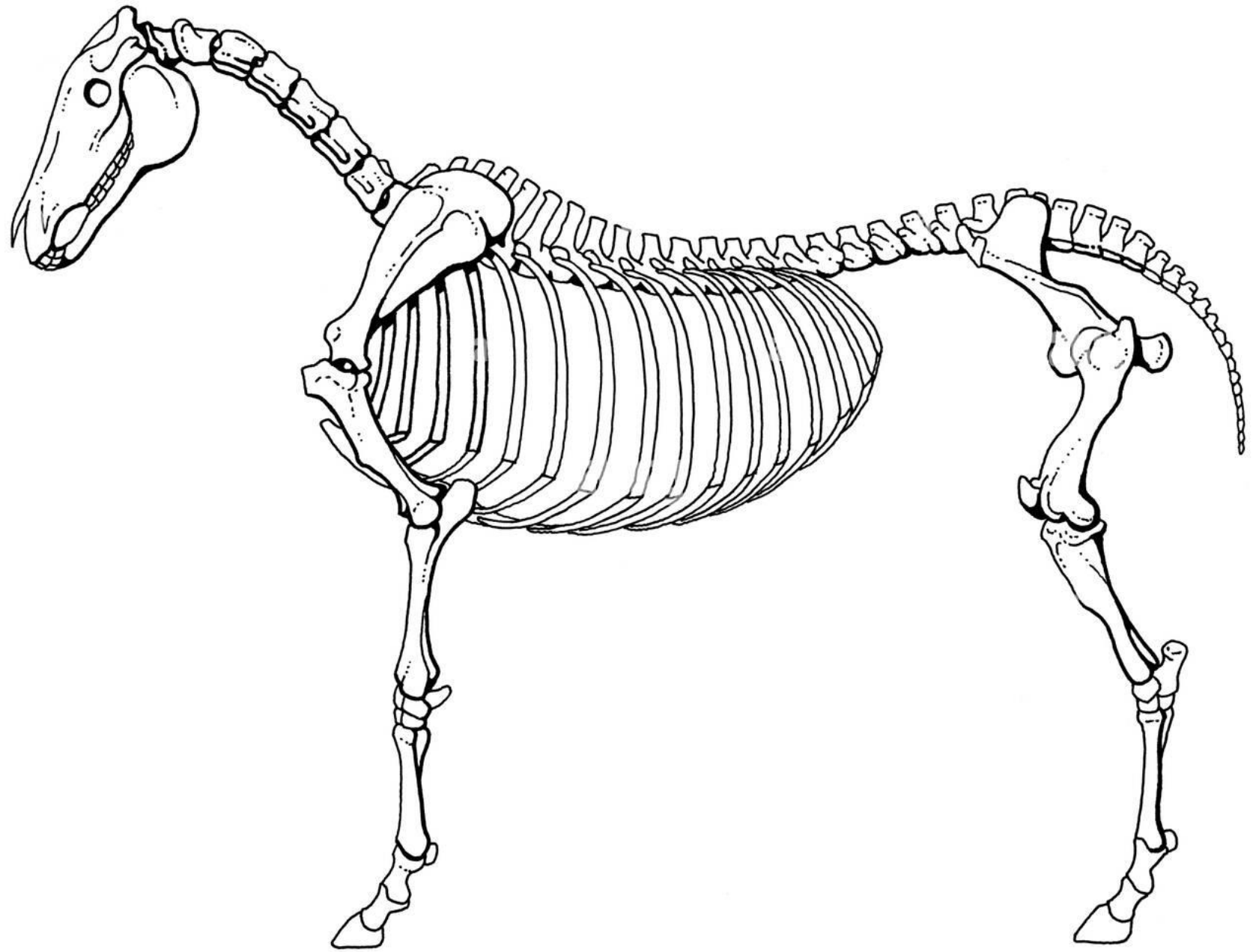
TELO

CRISTA HUMERI

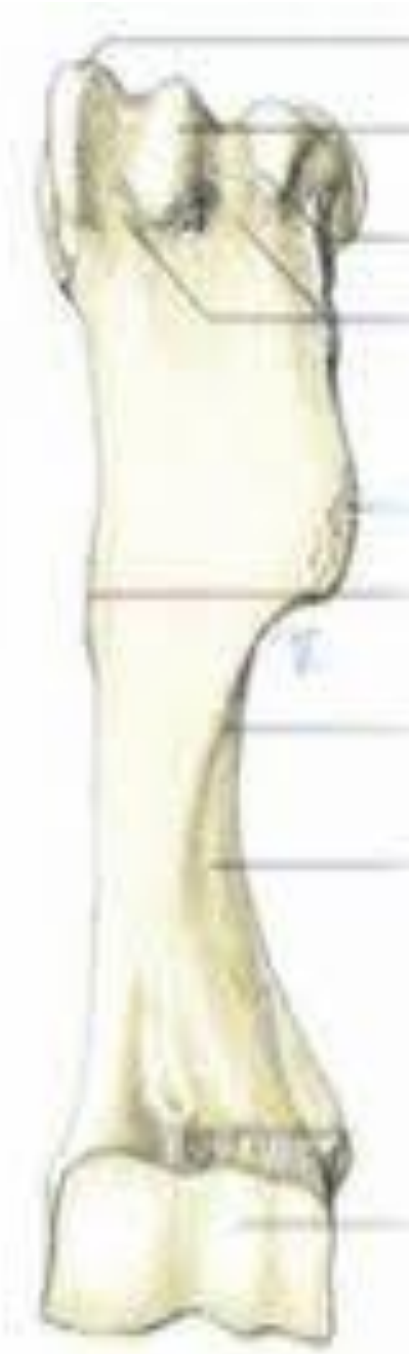
GREBEN

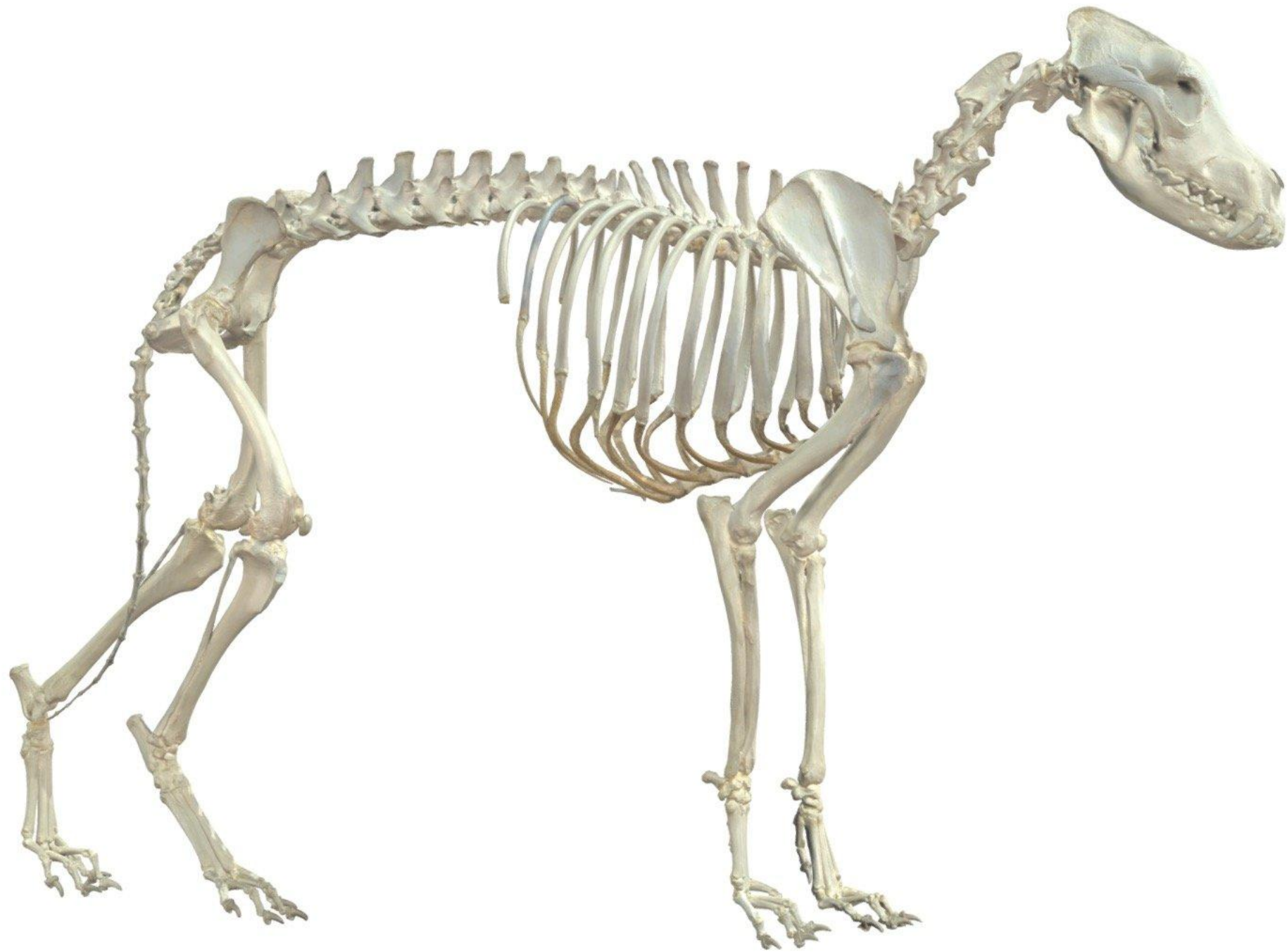
FOSSA OLECRANI

LAKATNA JAMA

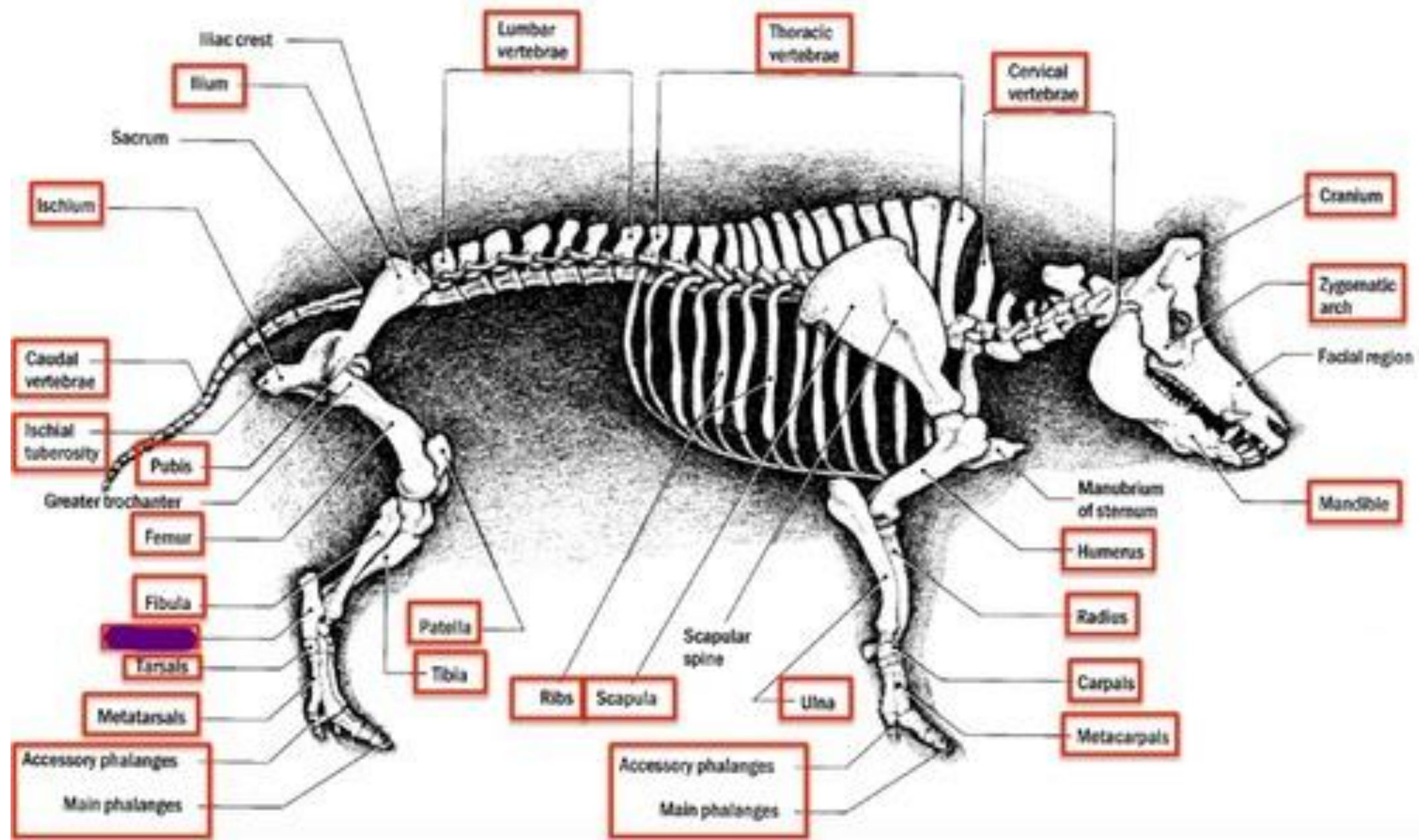












# SVINJA



# Humerus

PIG



- Lateral tuberosity  
Almost converts bicipital groove into foramen

HORSE



- Bicipital groove  
Divided by a ridge  
- presence of intermediate tubercle

CATTLE



- Massive lateral tuberosity overhangs bicipital groove

CAT



Supracondylar foramen

DOG



- Single lateral tuberosity  
- supratrochlear foramen

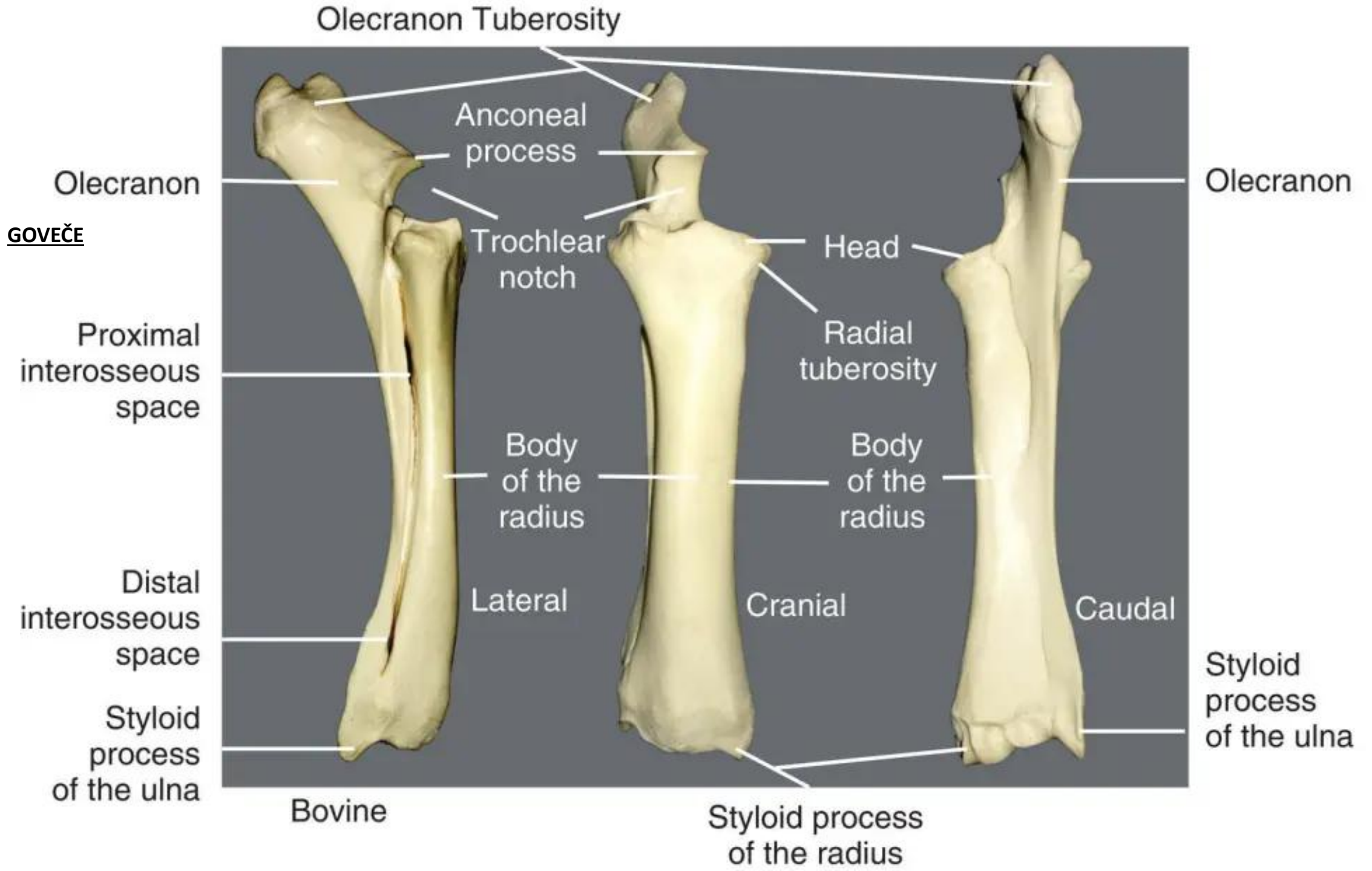




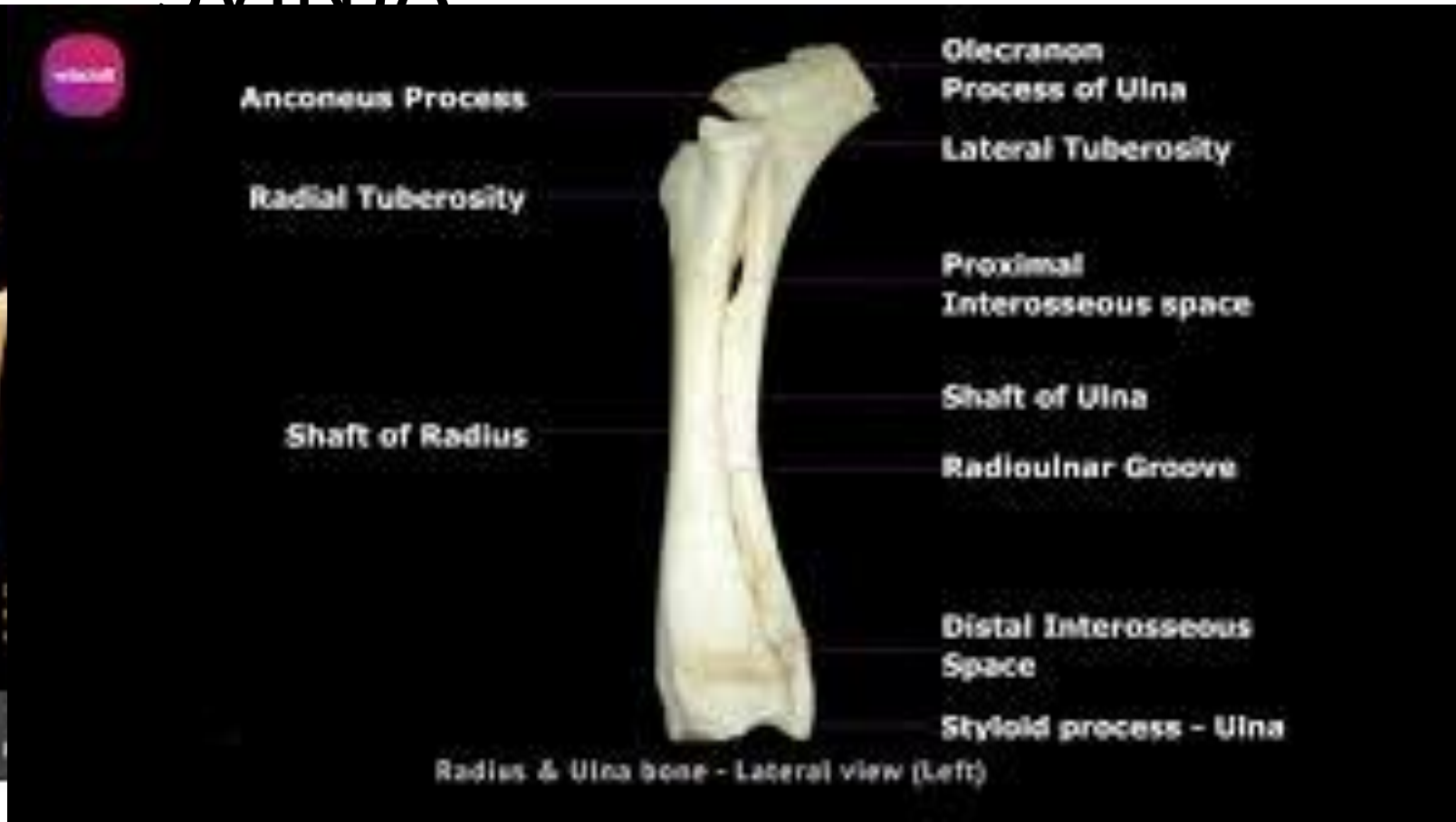


# Radius of Cattle





# SVINIA



# PAS



# RADIUS AND ULNA



Dog



Cat



Cattle

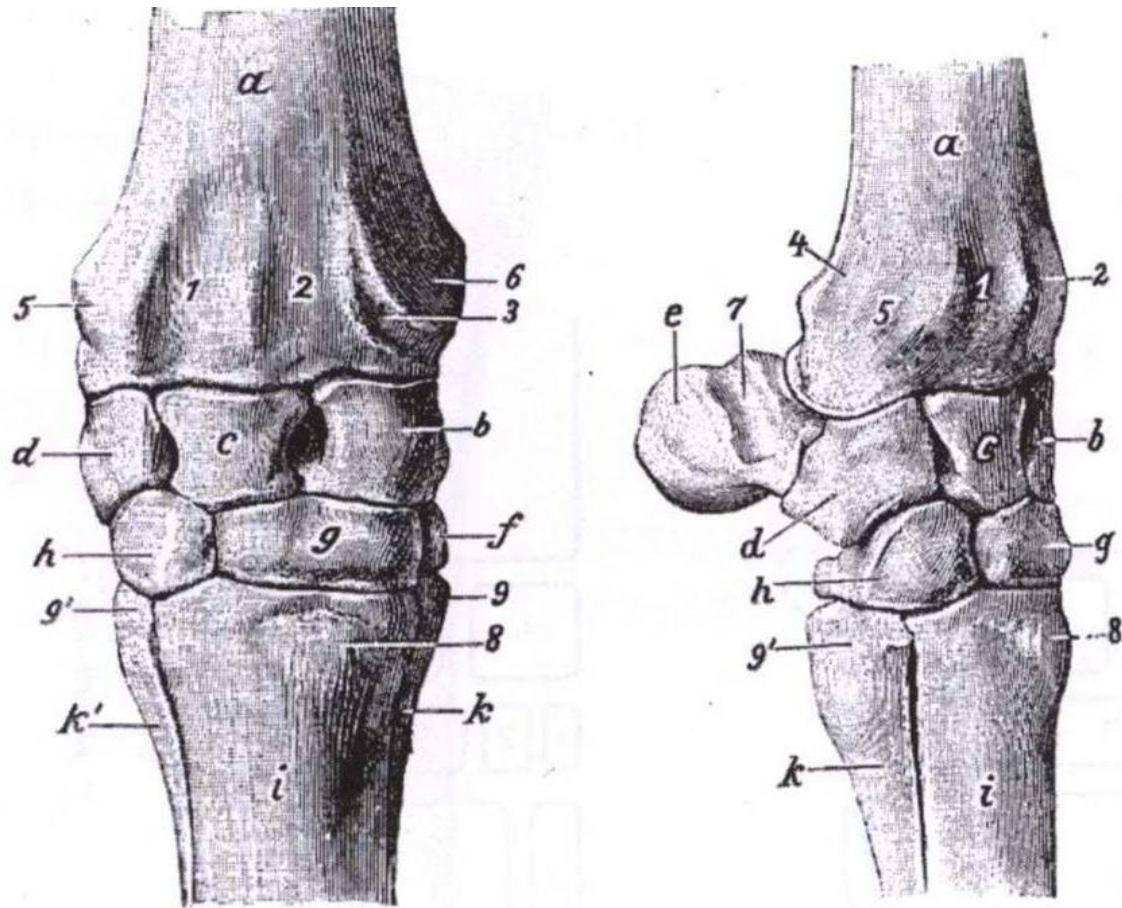


Goat



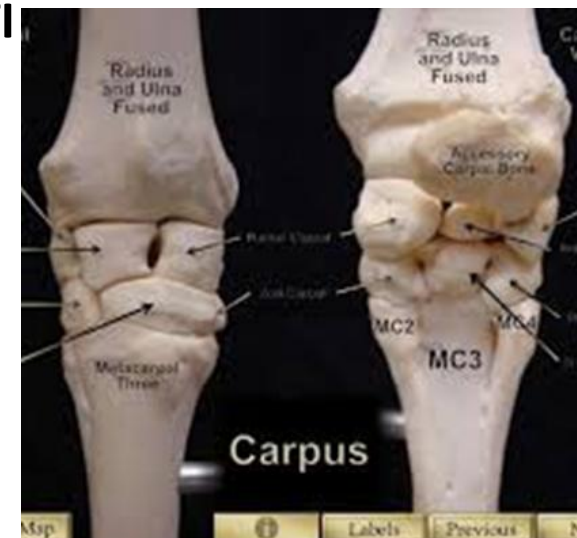
Pig

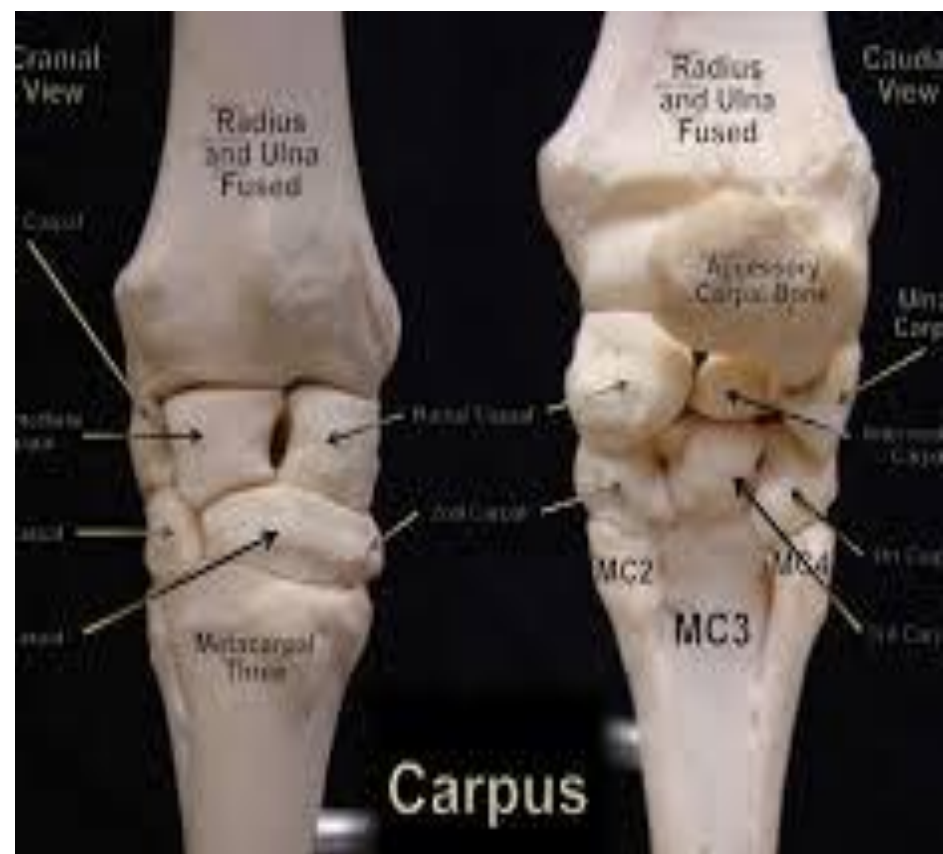
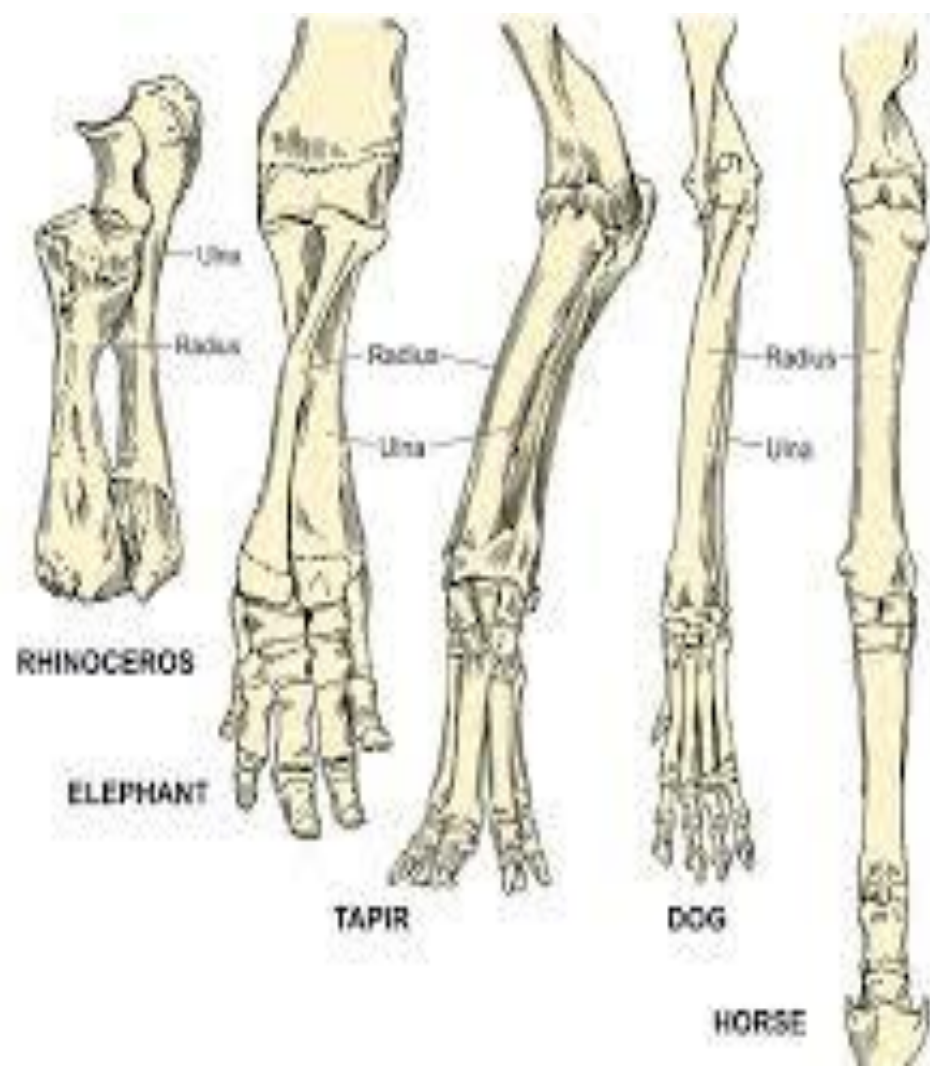
# OSSA CARPI – PREDNJE KOLENO

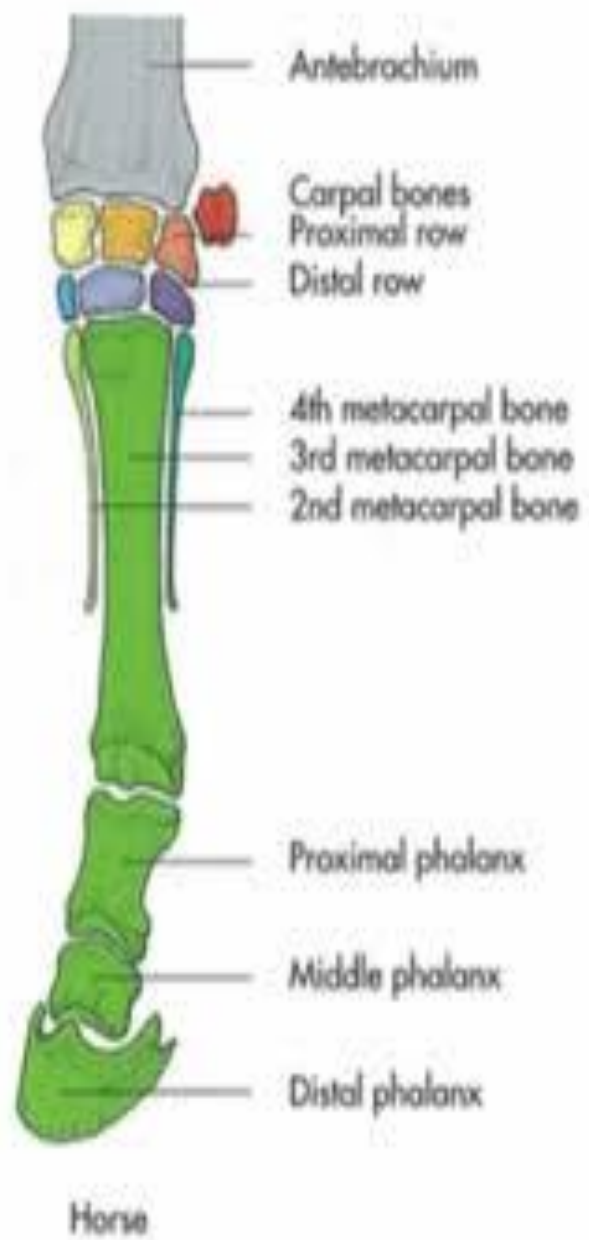


SVINJA	4+4
KONJ	4+3
PREŽIVARI	4+2
PAS	3+4

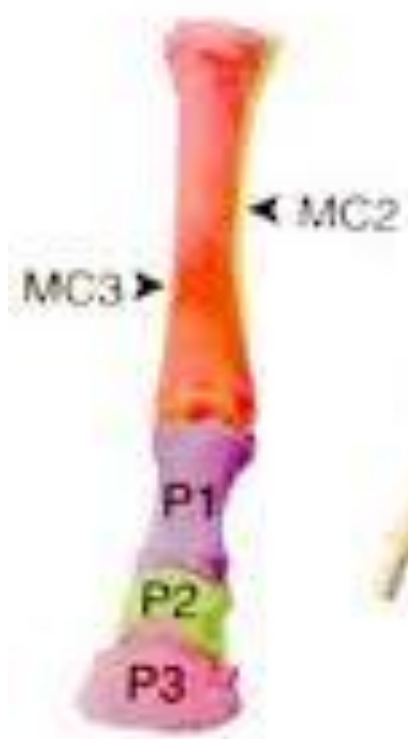
KRATKE KOSTI  
POREĐANE  
U DVA REDA



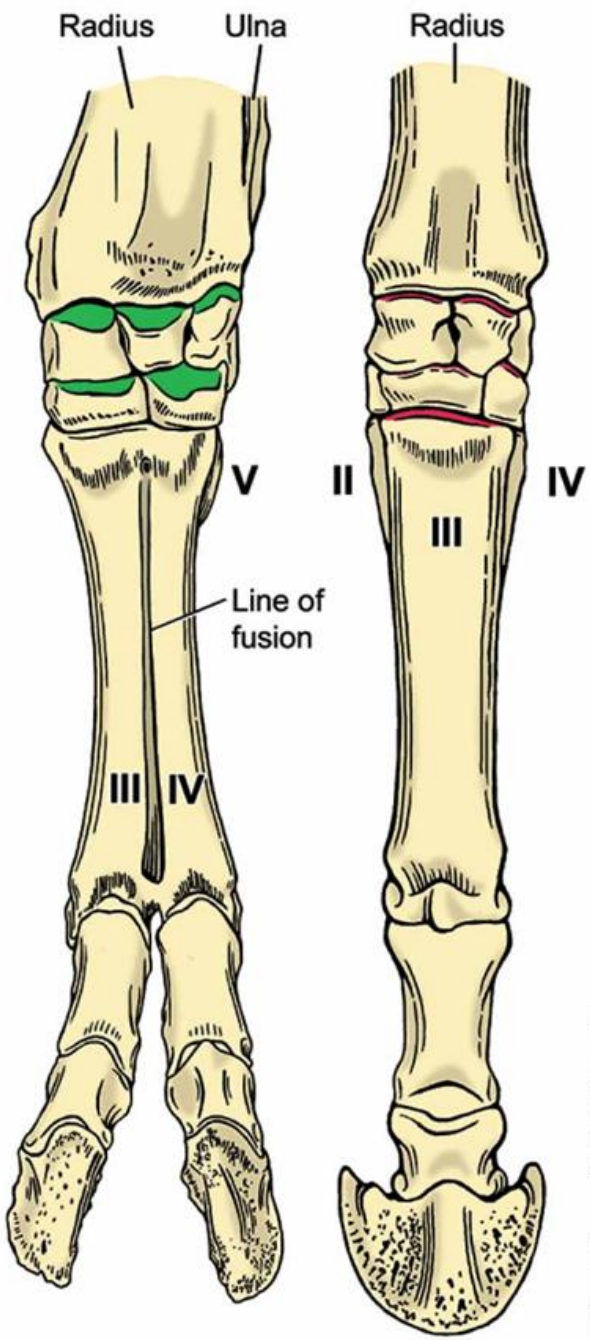












**CATTLE**

**HORSE**

Photos and illustrations: Dr. Deb Bennett

**FORE CANNON BONE**

**HIND CANNON BONE**

Posterior

Anterior

Posterior

Anterior

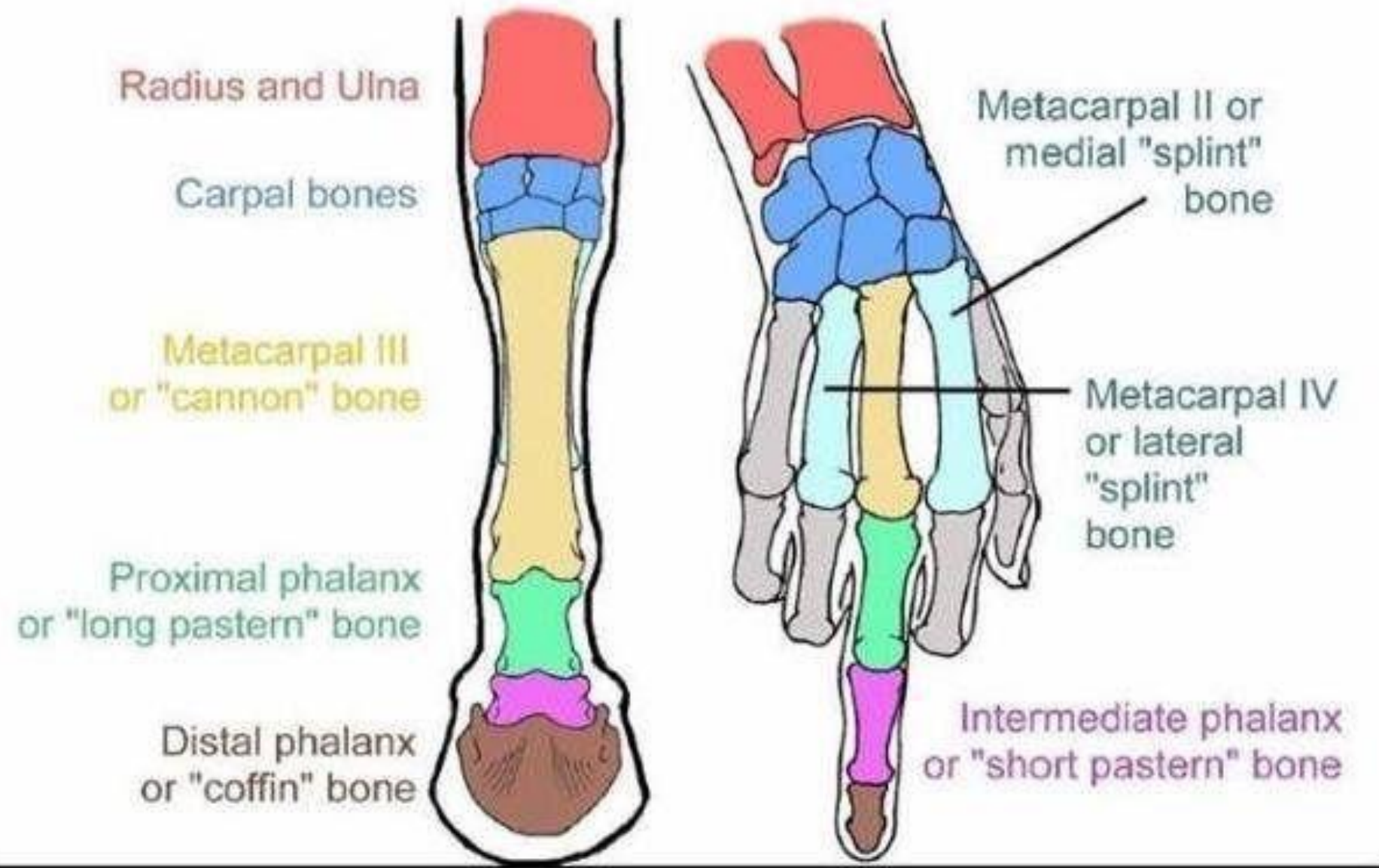


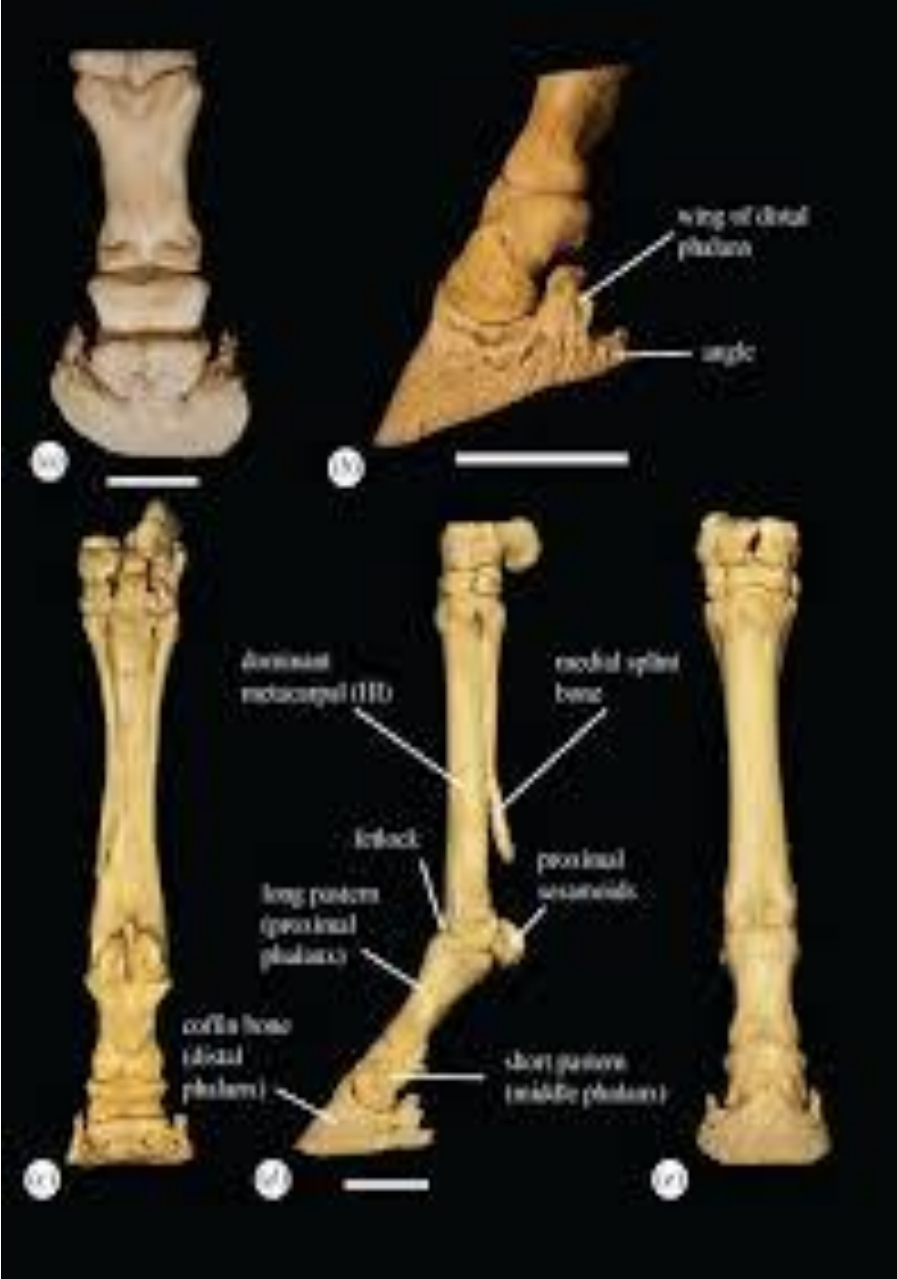
MC IV

MC II

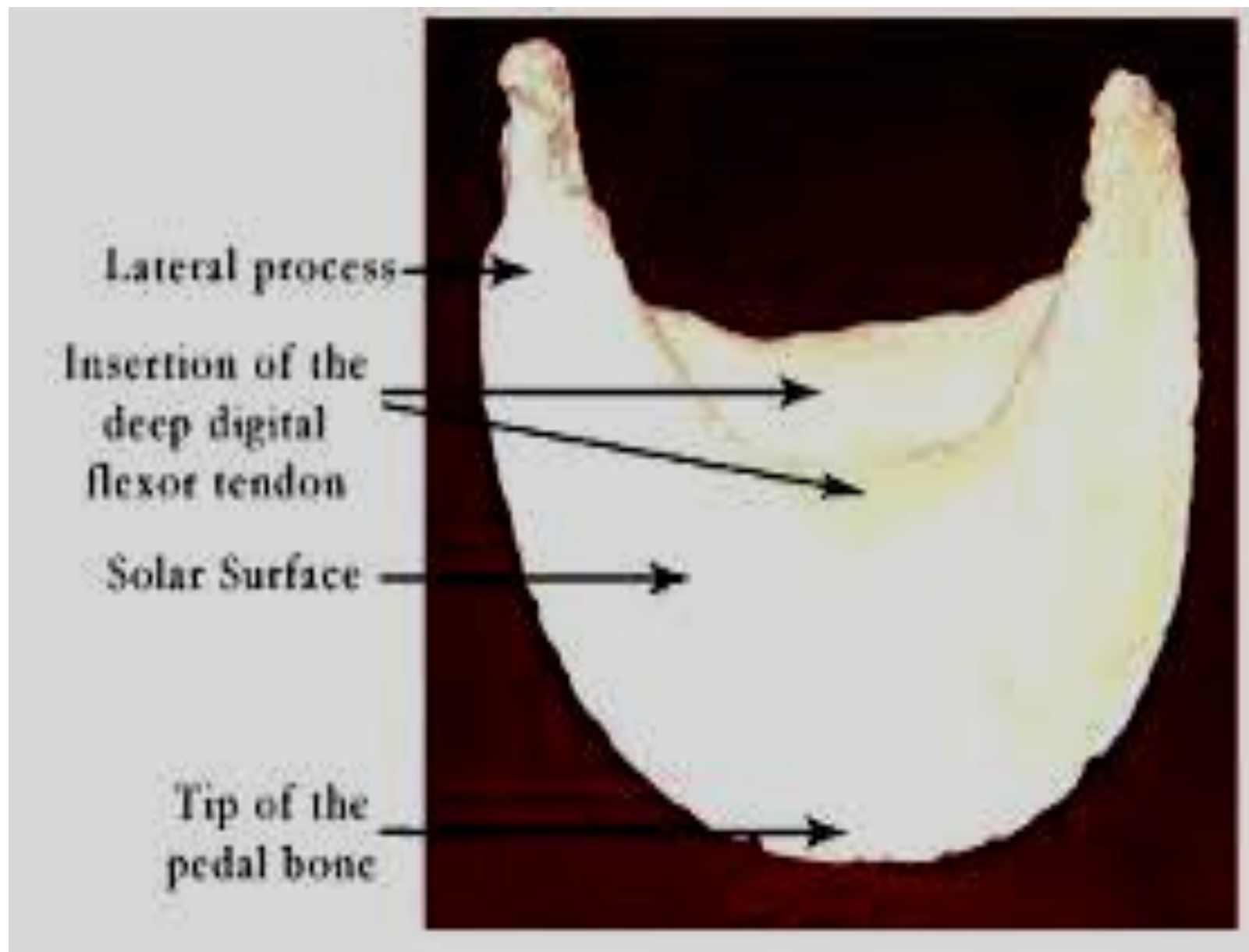
MT IV

MT II





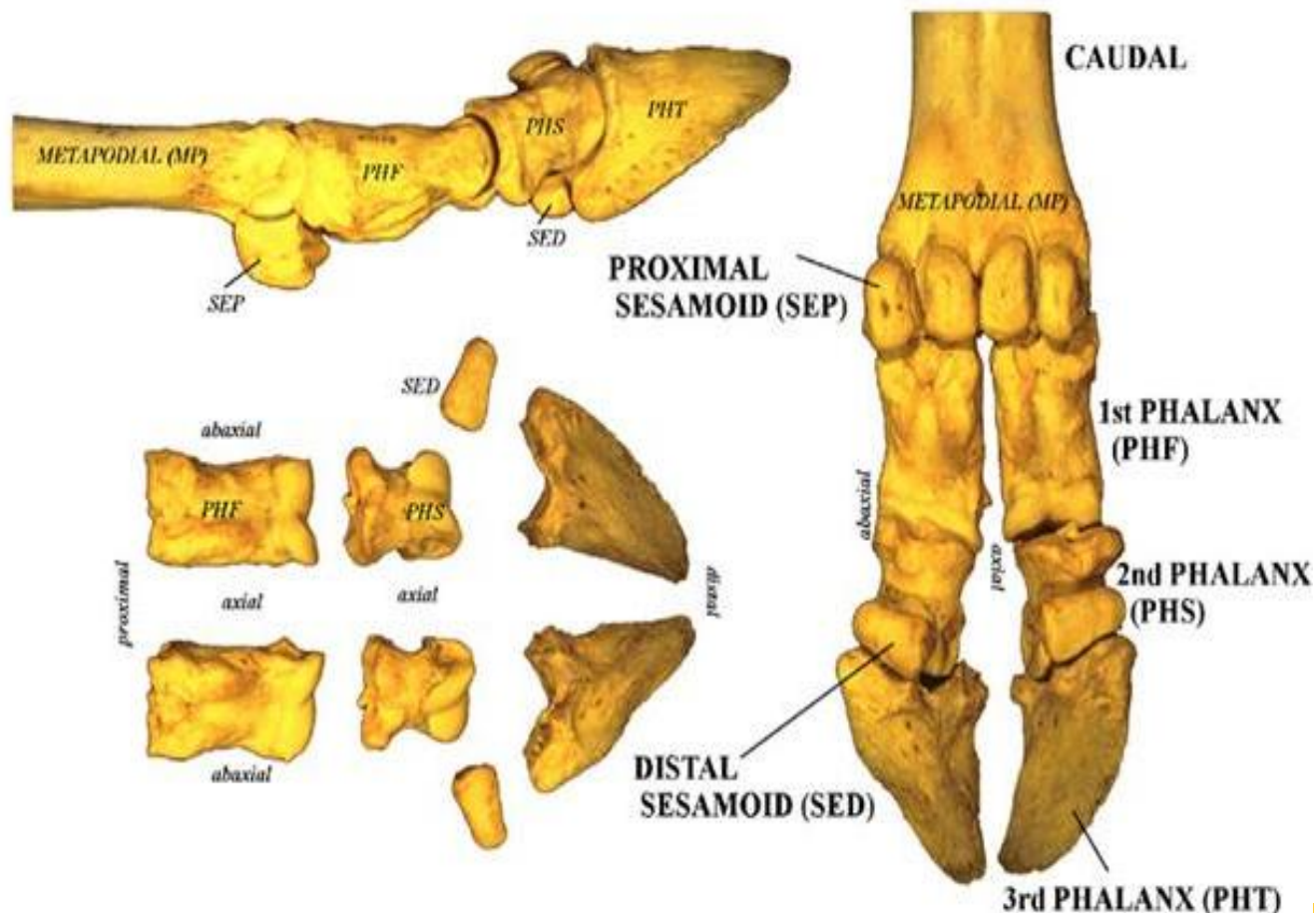




# OSSA DIGITORUM MANUS - PRSTI

L.C. Todd

## PHALANGES (PH) AND SESAMOIDS (SE)



PAS	5
SVINJA	4
PREŽIVARI	2
KONJ	1

KIČIČNA KOST

PHALANX PROXIMALIS

KRUNSKA KOST

PHALANX MEDIA

KOPITNA KOST

PHALANX DISTALIS

FACIES PARIETALIS

ZIDNA POVRŠINA

FACIES SOLEARIS

TABANSKA POVRŠINA

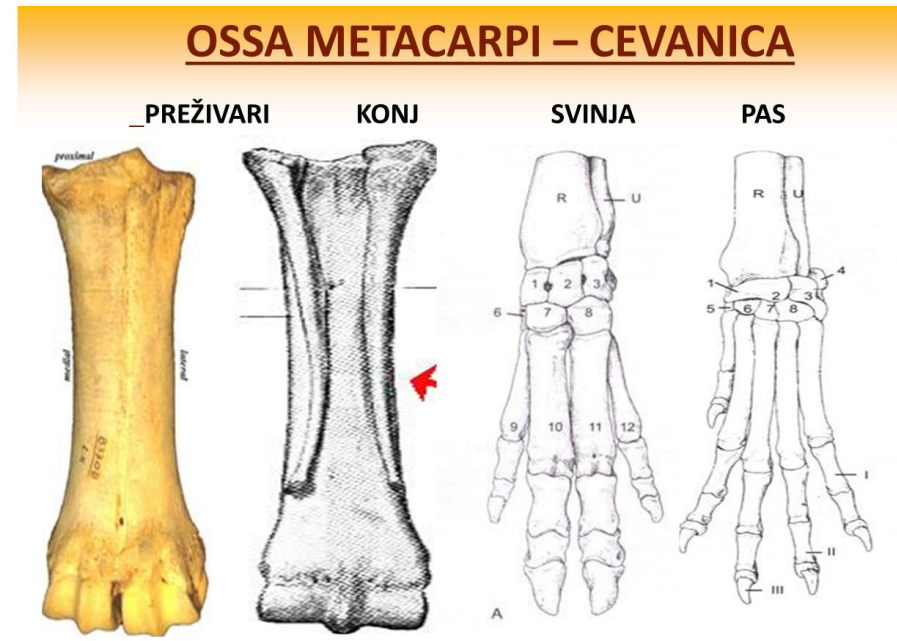
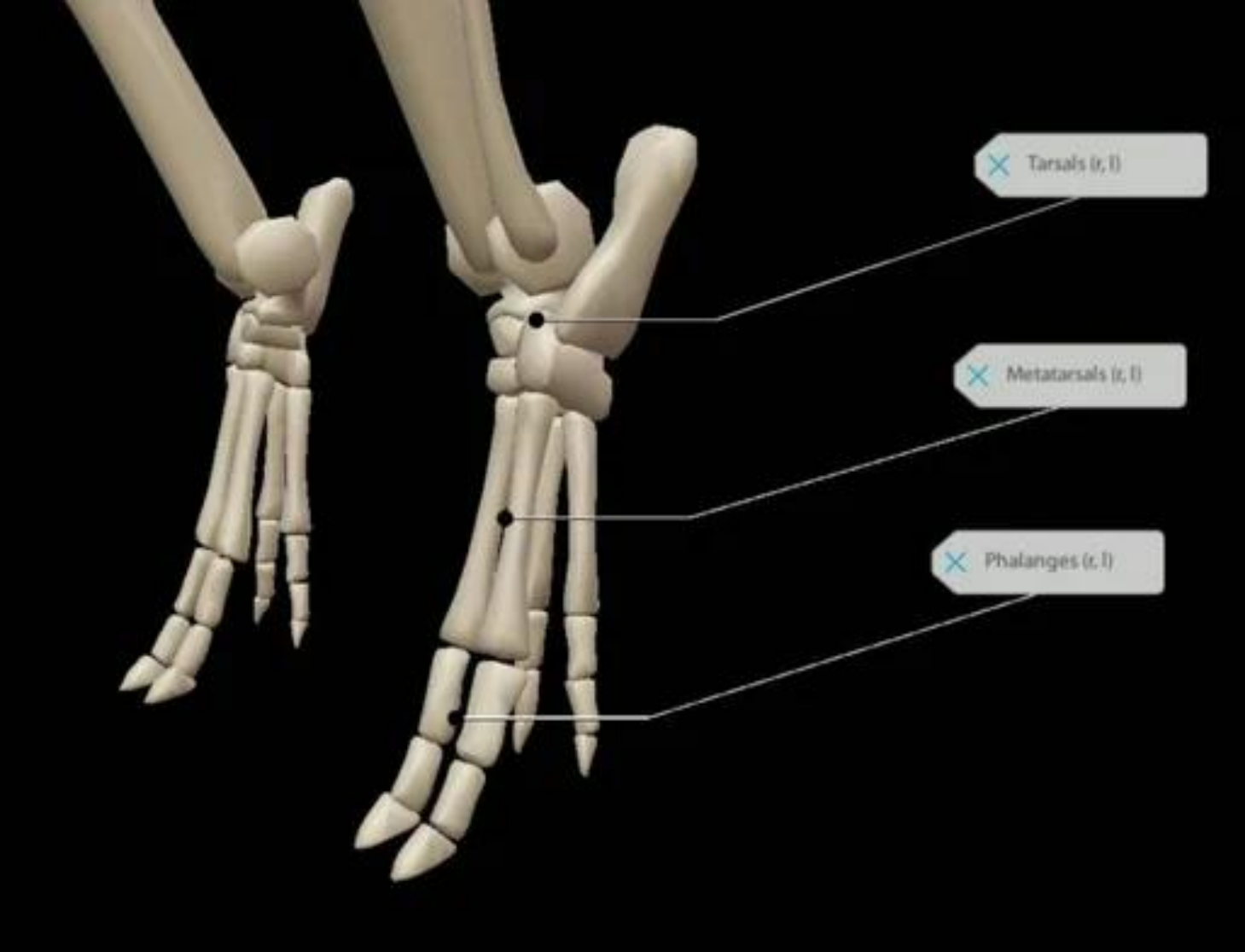
FACIES ARTICULARIS

ZGLOBNA POVRŠINA

## OSSA SESAMOIDEA

IZA SVAKOG PRSTA NALAZE SE PO TRI SEZAMOIDNE KOSTI, DVE IZA KIČIČNE KOSTI I JEDNA IZA KOSTI PAPKA ( ŽABIČNA KOST)





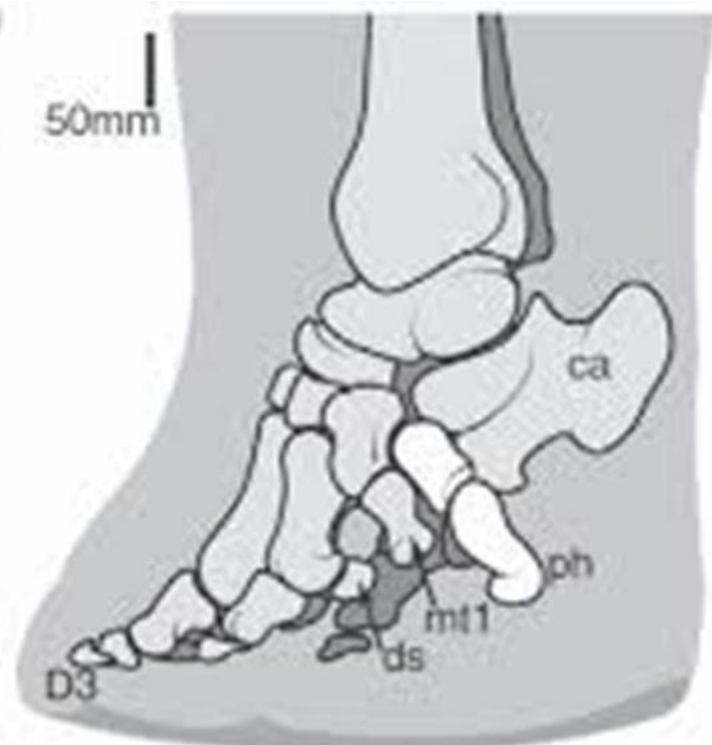
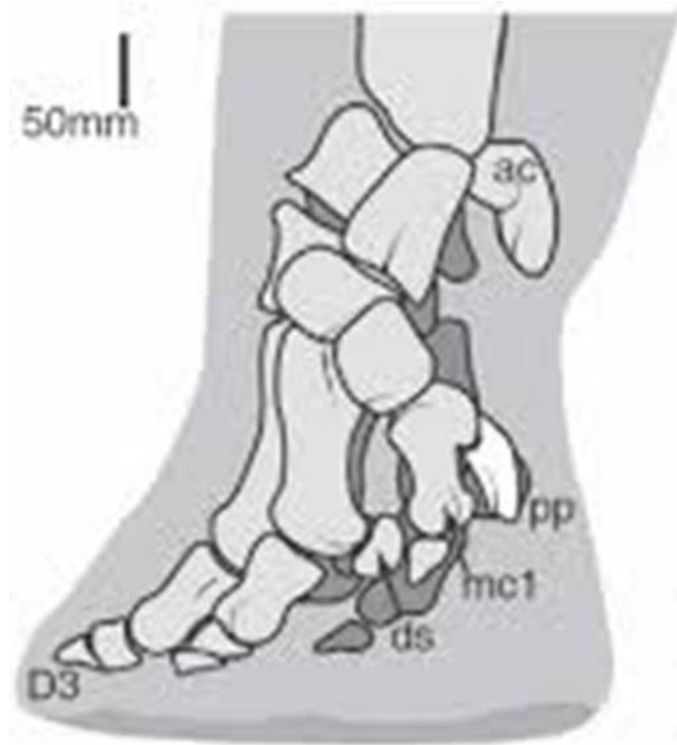
JAKE'S  
BONES

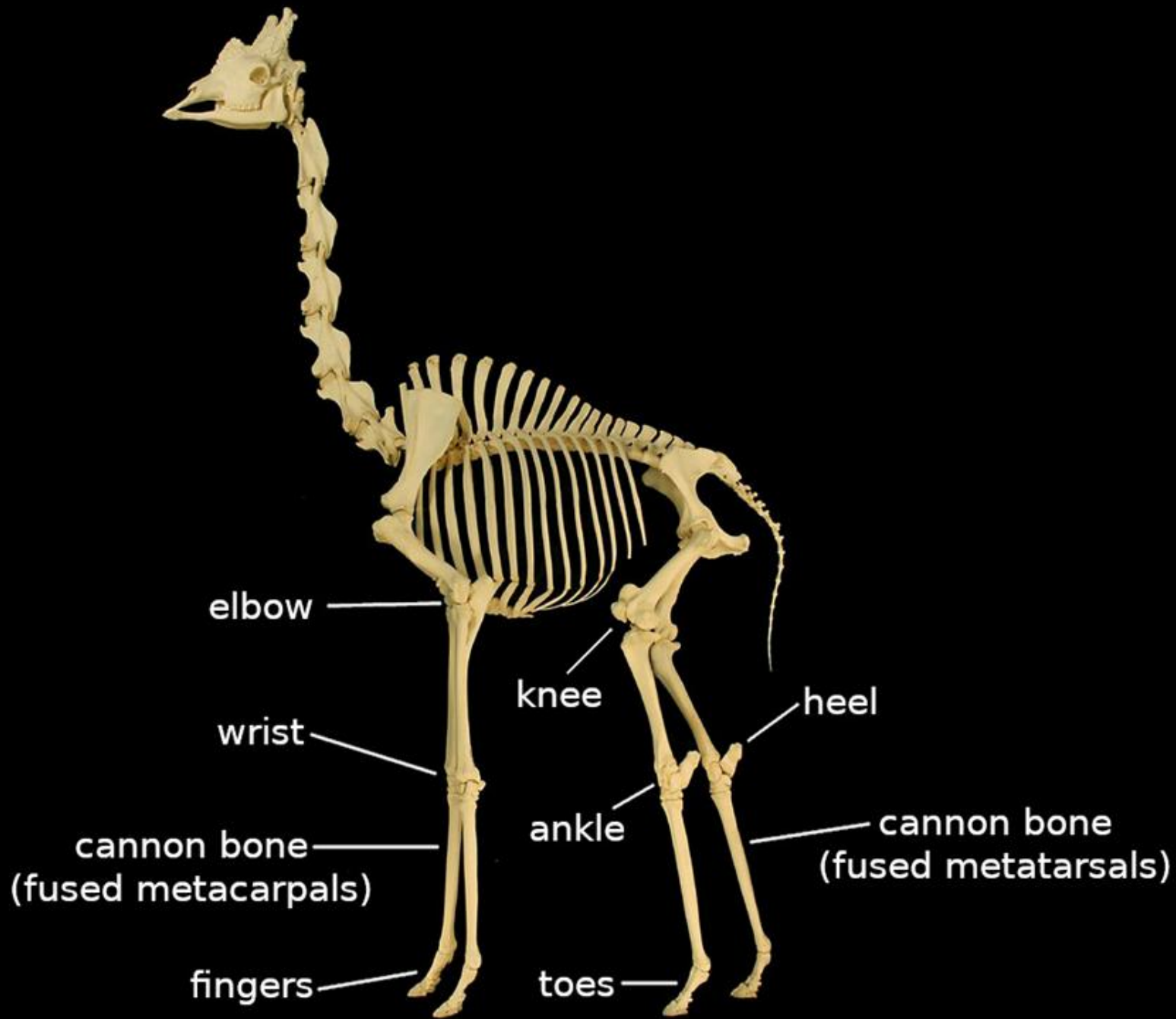


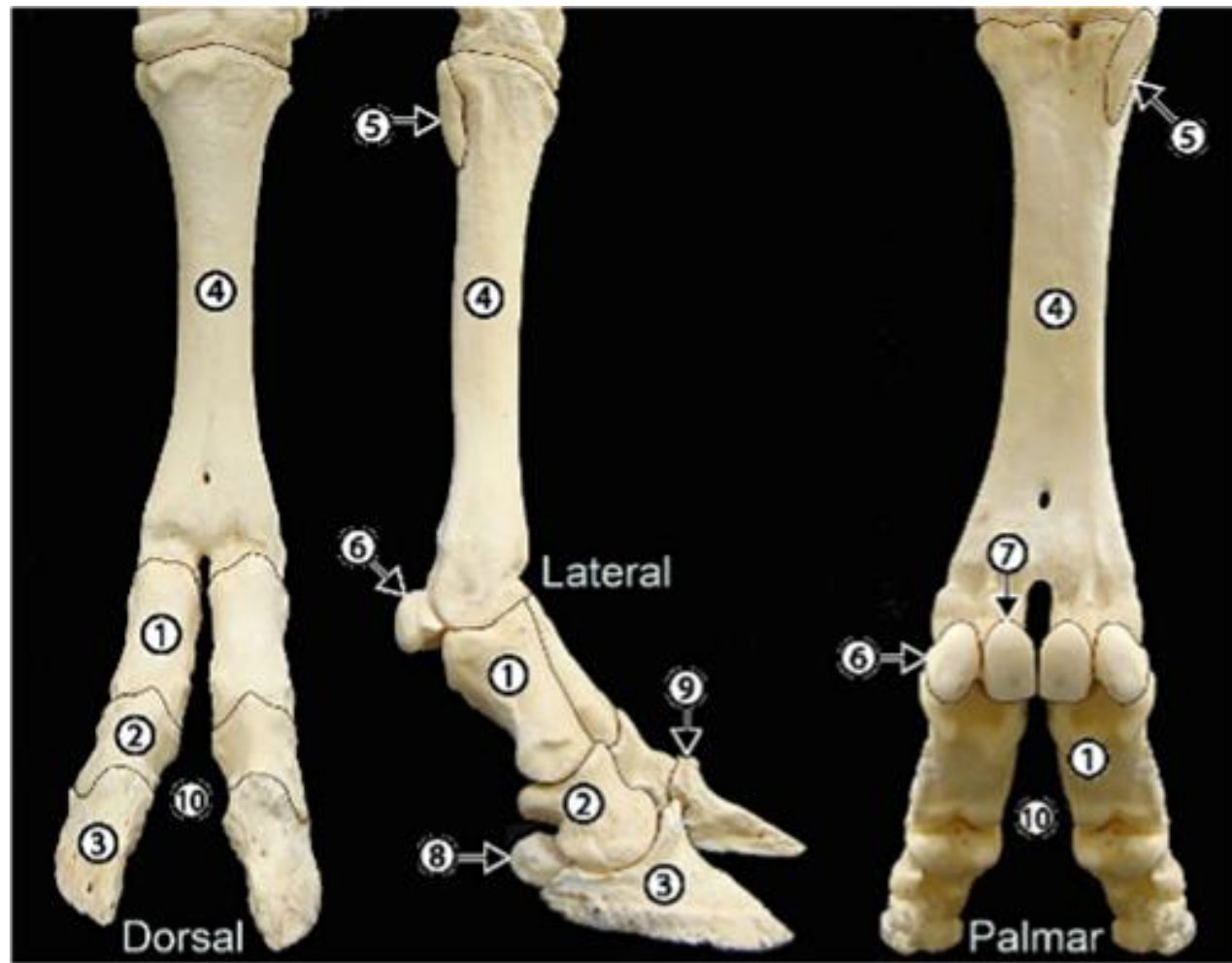


Elephant feet









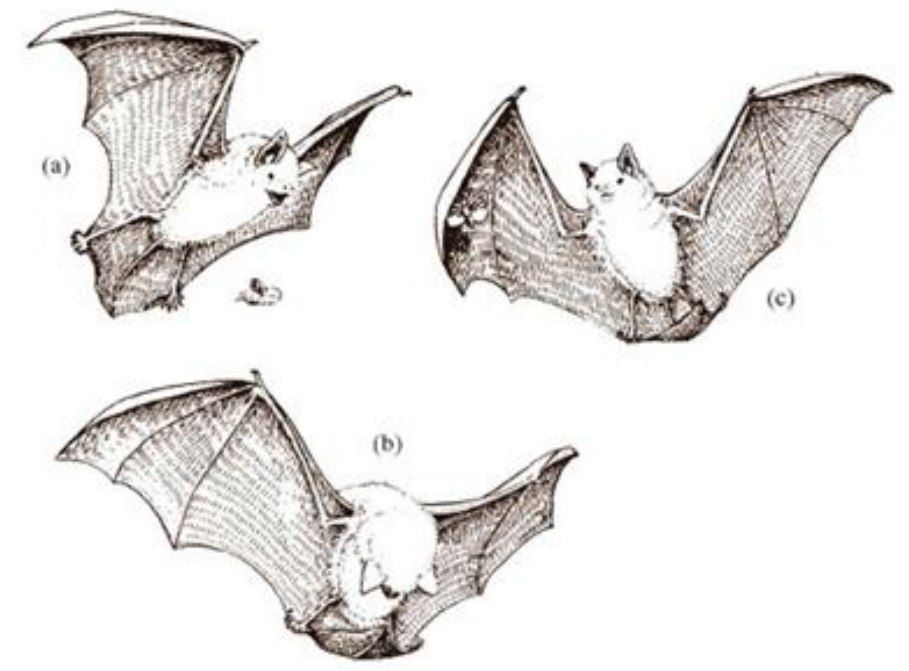
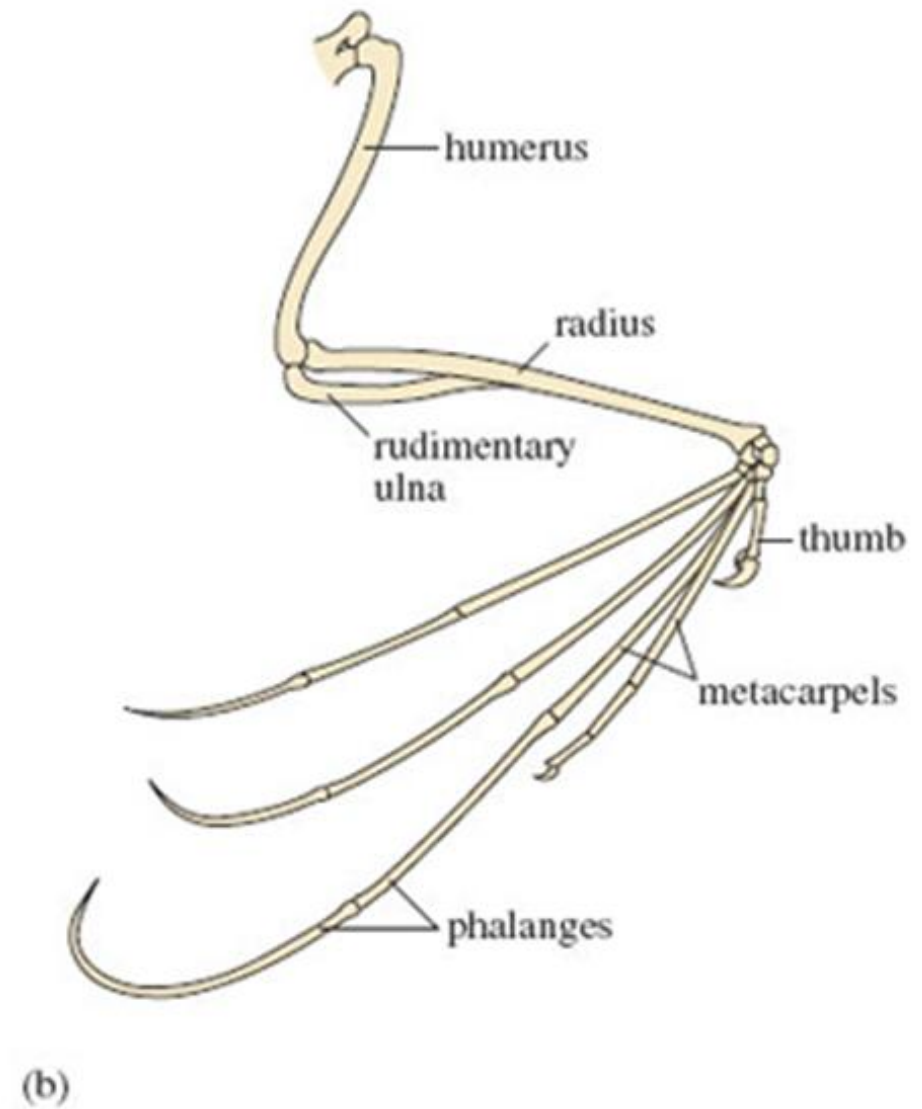
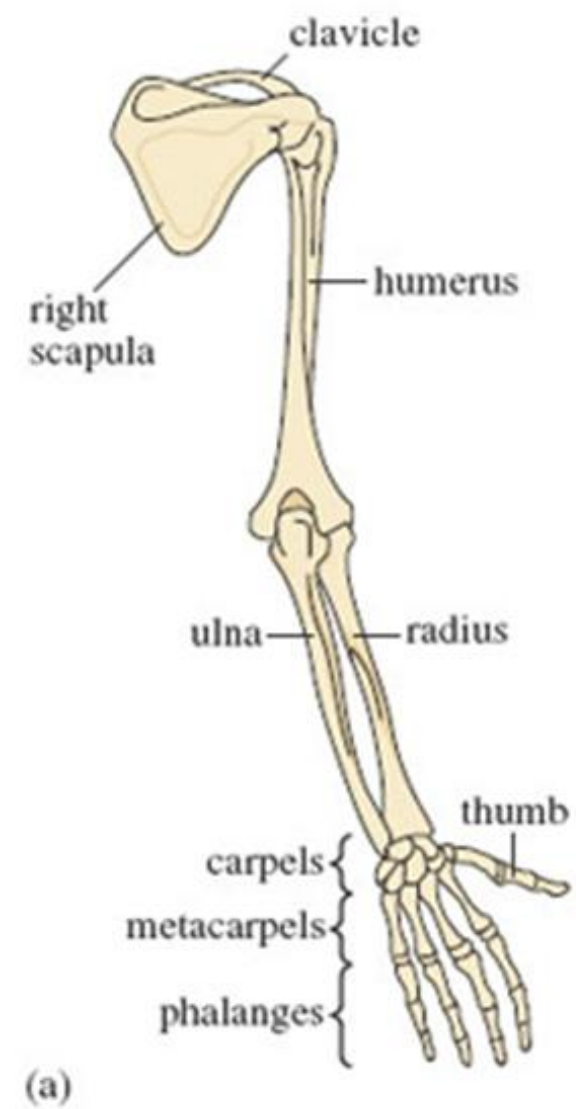
# Skeleton: Giraffes vs Humans



Humans and giraffes have the same number of bones in their necks.

Giraffe's vertebrae are just bigger!







- Humerus
- Ulna
- Radius
- Carpals
- Metacarpals
- Phalanges

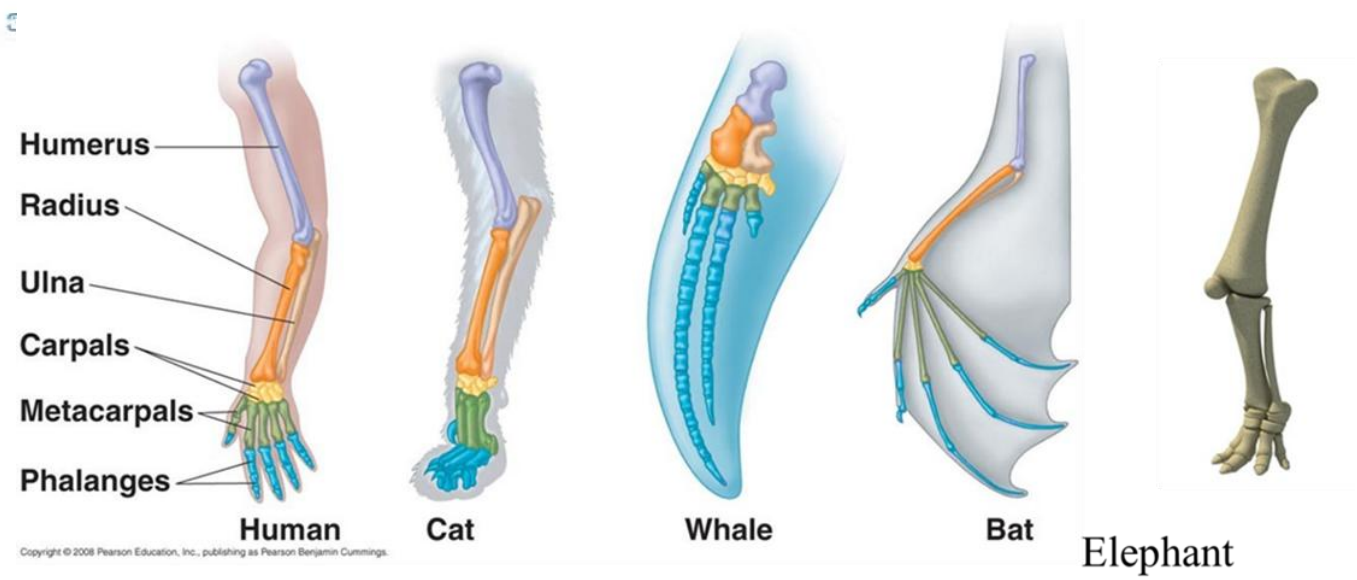
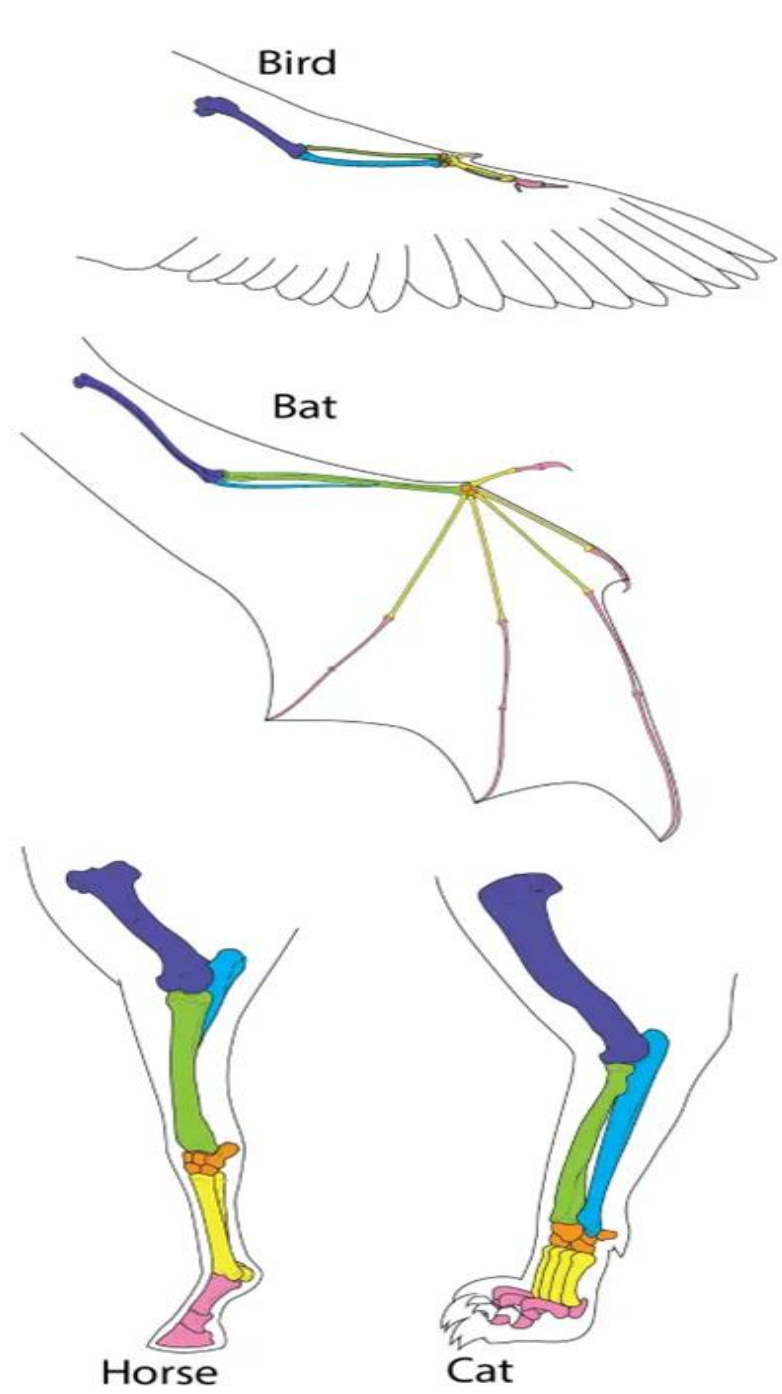


Figure 8.4 Forelimb skeletal anatomy of six tetrapods.



