

OSSA CAPITIS

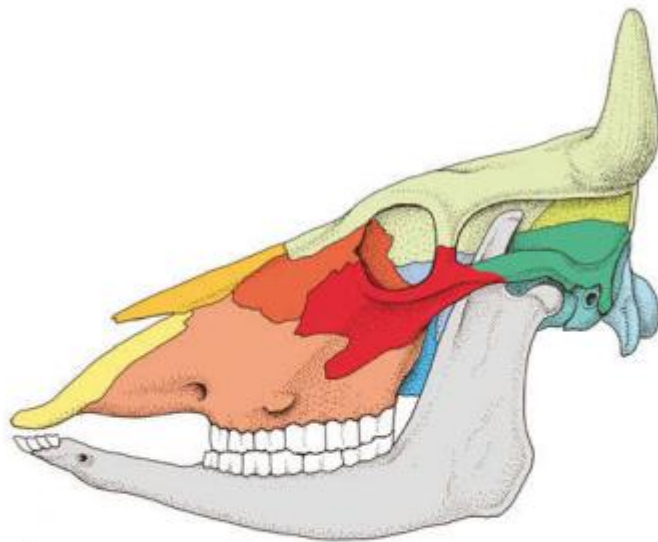
- **Ossa cranii**

- **Ossa faciei**

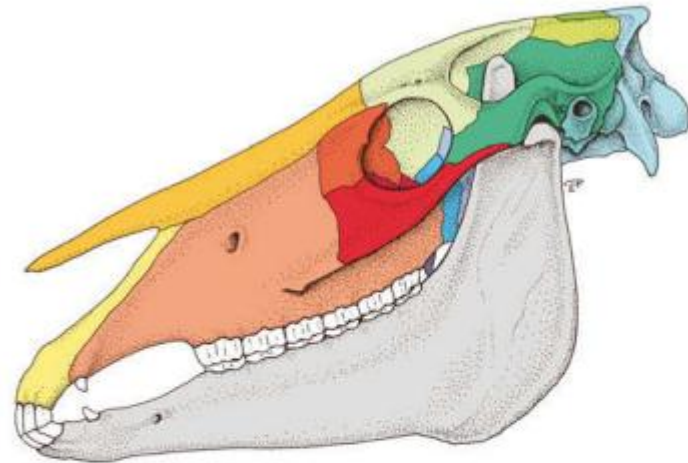
OSSA CRANII

- **Os occipitale**
- **Os sphenoidale**
- **Os ethmoidale**
- **Os interparietale**

- **Os parietale**
- **Os frontale**
- **Os temporale**



A



B

Yellow Incisive
 Orange Nasal
 Light brown Maxilla
 Red Lacrimal

Red Zygomatic
 Light green Frontal
 Olive green Parietal
 Dark green Interparietal

Teal Temporal, squamous part
 Light blue Temporal, petrous part
 Light blue Occipital
 Grey Mandible

Blue Palatine
 Purple Sphenoid
 Purple Pterygoid

Fig. 2.2 Bones of the skull and mandible of the ox (A) and horse (B) (schematic, lateral aspect); fig. based on data from Ellenberger and Baum, 1943.

OS OCCIPITALE

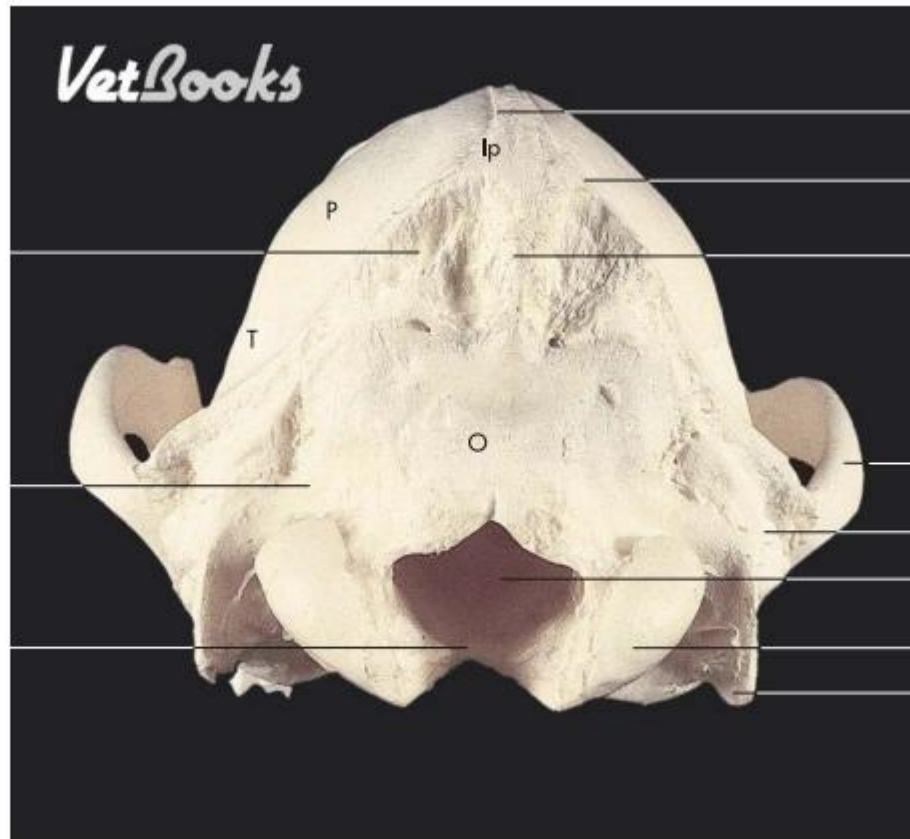
- **Squama occipitalis**
- **Partes laterales**
- **Pars basilaris**

- lp Interparietal
- O Occipital
- P Parietal
- T Temporal

Squamous part
of the occipital bone

Lateral part
of the occipital bone

Basilar part
of the occipital bone



External sagittal crest

Nuchal crest

External occipital
protuberance

Zygomatic arch

Mastoid process

Foramen magnum

Occipital condyle

Paracondylar process

Fig. 2.4 Nuchal aspect of a canine skull.

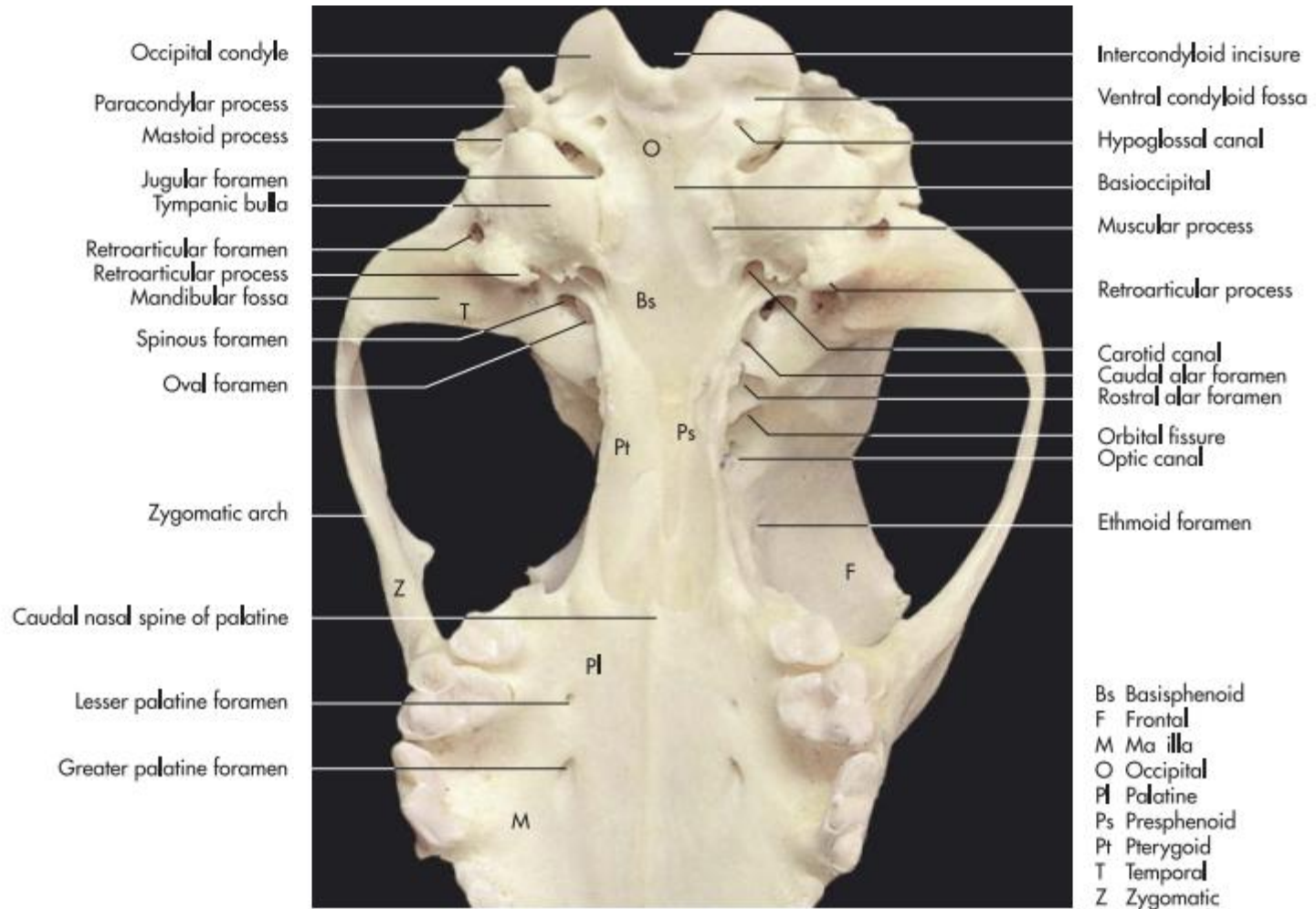


Fig. 2.6 Bones of the cranial part of a canine skull (ventral aspect).

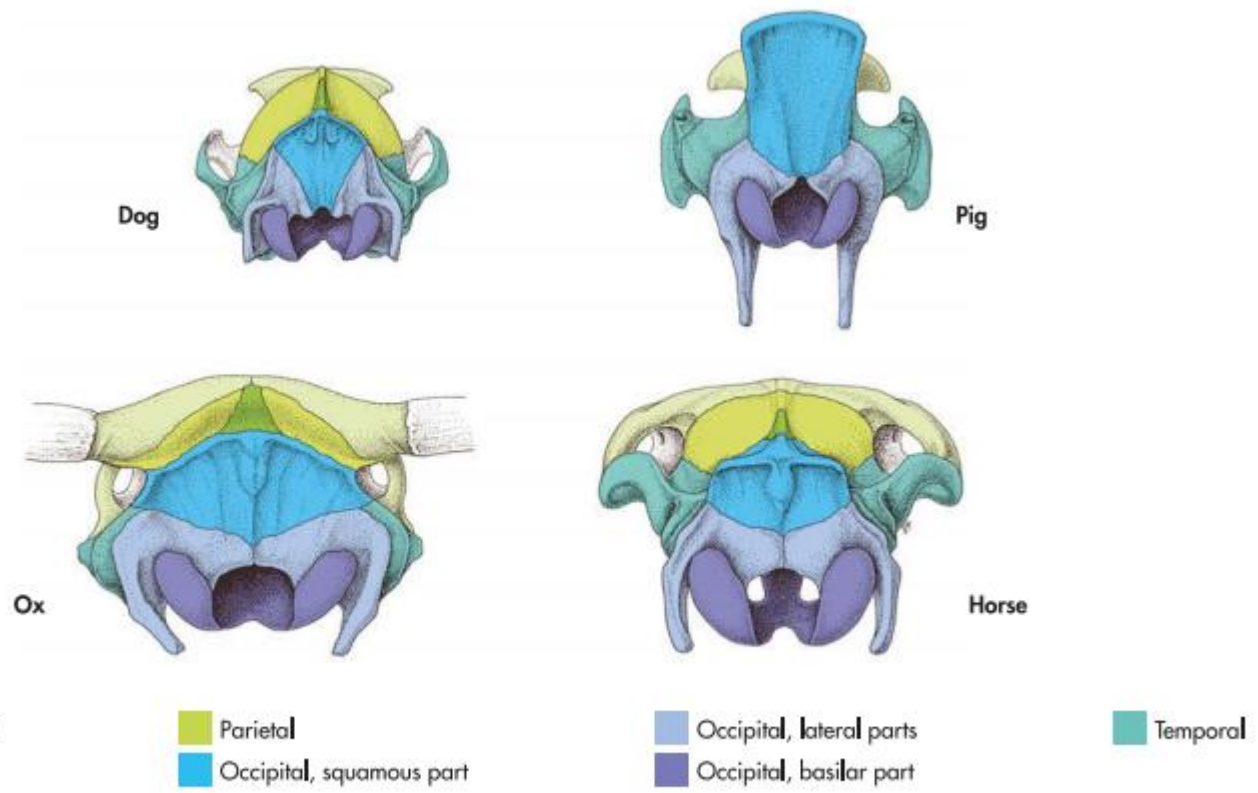


Fig. 2.3 Nuchal aspect of the canine, porcine, bovine and equine skull (schematic); fig. based on data from Ellenberger and Baum, 1943.

- **Squama occipitalis:**

- **Crista nuchae**

- **Crista sagittalis externa**

- **Protuberantia occipitalis externa (eq, Bo)**

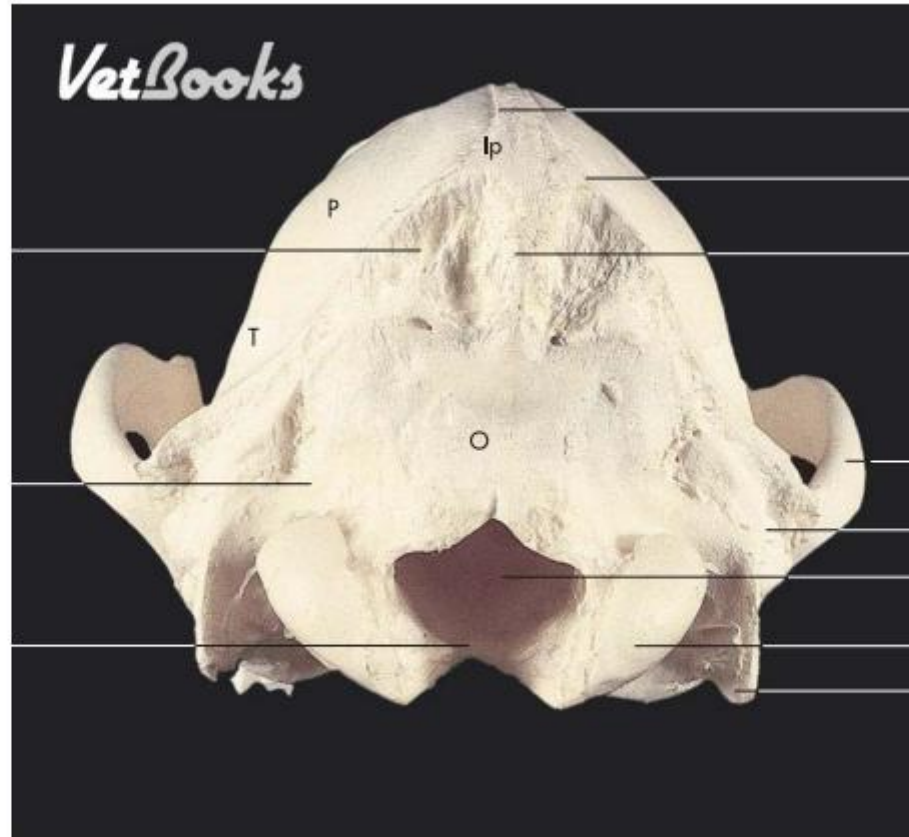
- **Protuberantia occipitalis interna (Bo, Car, su)**

Ip Interparietal
 O Occipital
 P Parietal
 T Temporal

Squamous part
 of the occipital bone

Lateral part
 of the occipital bone

Basilar part
 of the occipital bone



External sagittal crest

Nuchal crest

External occipital
 protuberance

Zygomatic arch

Mastoid process

Foramen magnum

Occipital condyle

Paracondylar process

Fig. 2.4 Nuchal aspect of a canine skull.

- F Frontal
- I Incisive
- Ip Interparietal
- M Maxilla
- N Nasal
- P Parietal
- T Temporal
- Z Zygomatic

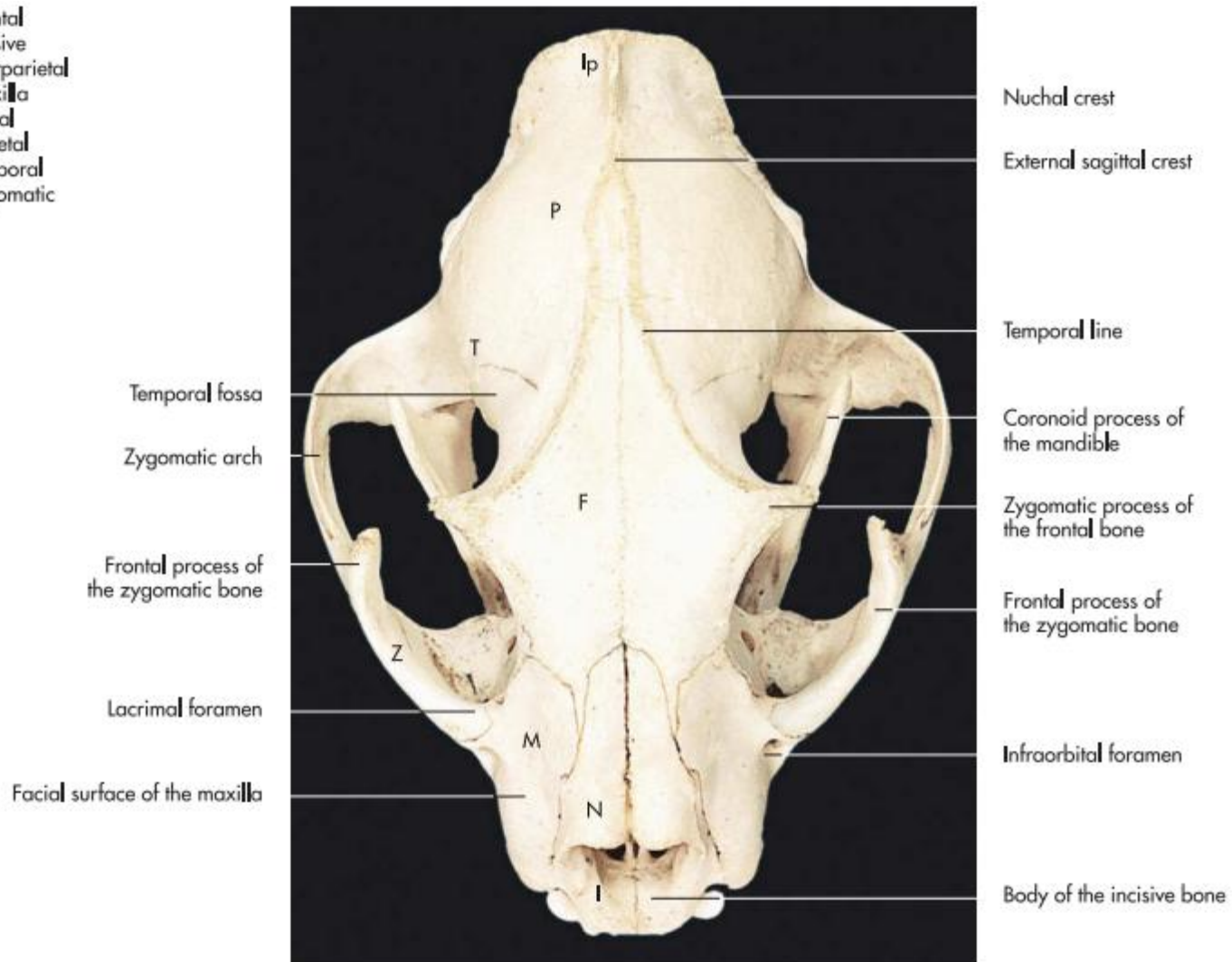


Fig. 2.18 Skull of a puma (dorsal aspect).

- **Partes laterales:**
 - **Foramen magnum**
 - **Condylus occipitalis**
 - **Processus jugularis (paracondylaris)**
 - **Canalis n. hypoglossi**

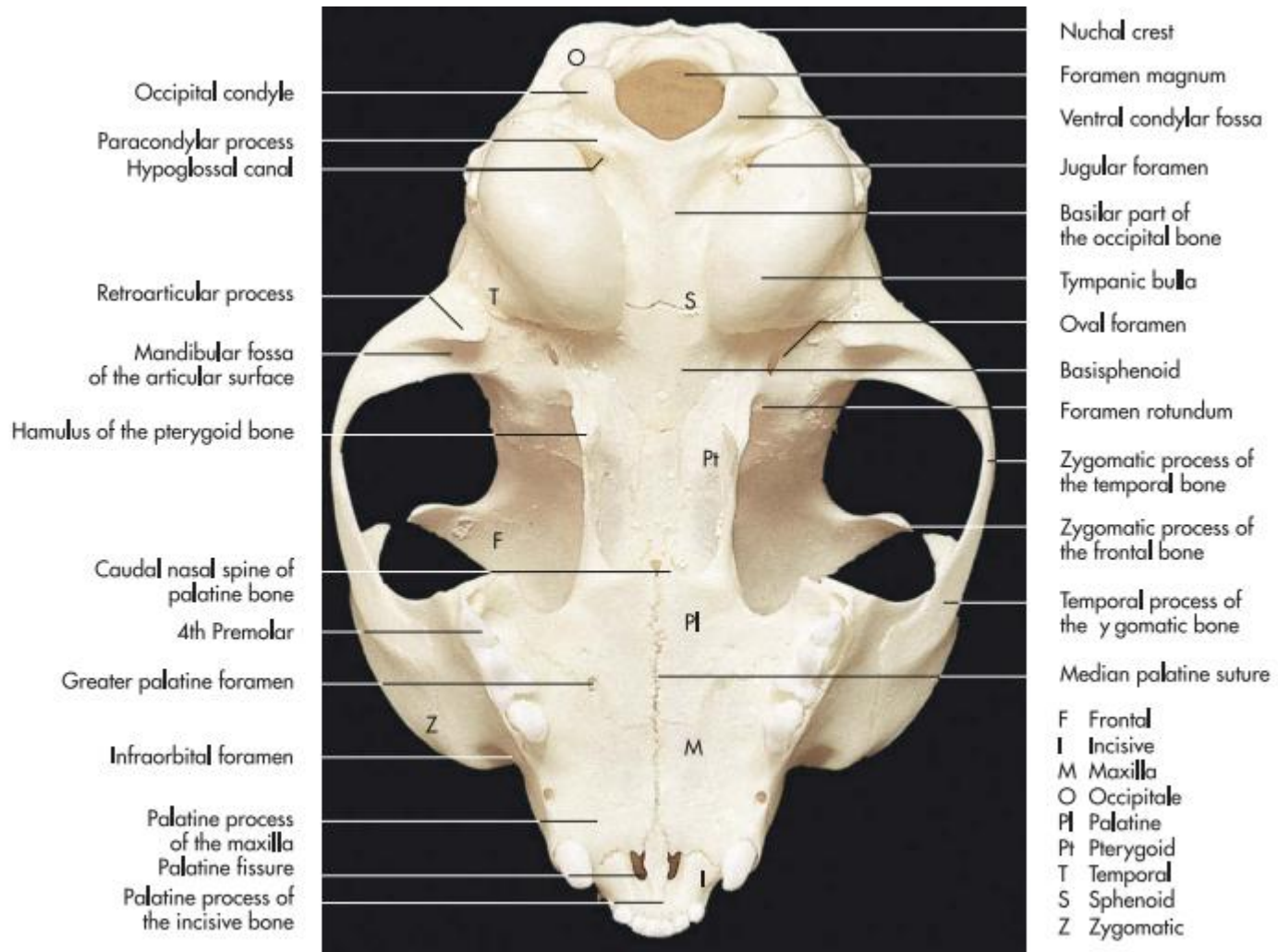


Fig. 2.19 Skull of a cat (ventral aspect).

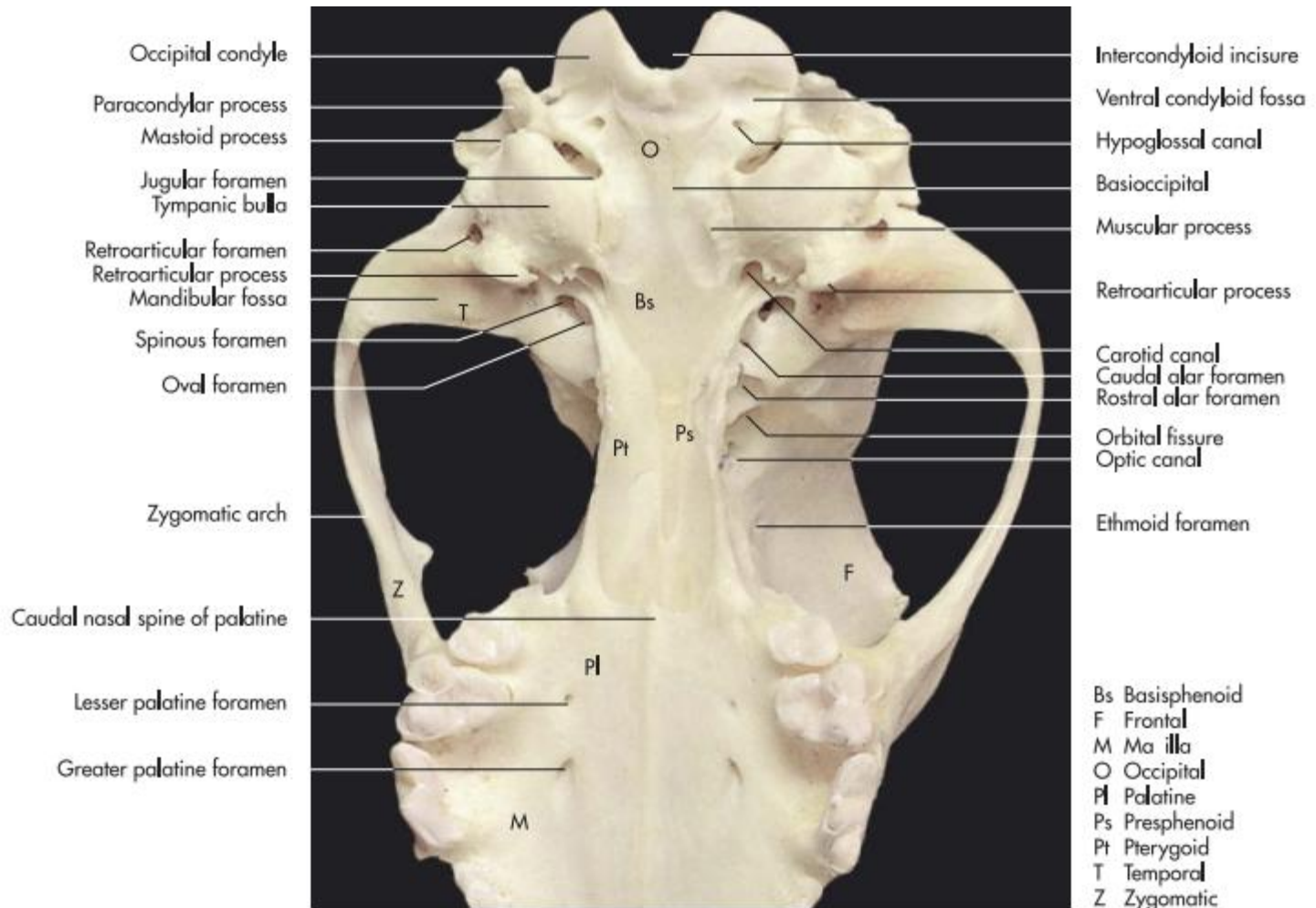


Fig. 2.6 Bones of the cranial part of a canine skull (ventral aspect).

- **Pars basilaris:**
 - **Impressio pontina**
 - **Impressio medullaris**
 - **Impressio cerebellaris**
 - **Foramen ovale (Ru, ca)**
 - **Foramen lacerum (eq, su)**

- **Foramen jugulare**
- **Tuberculum musculare**

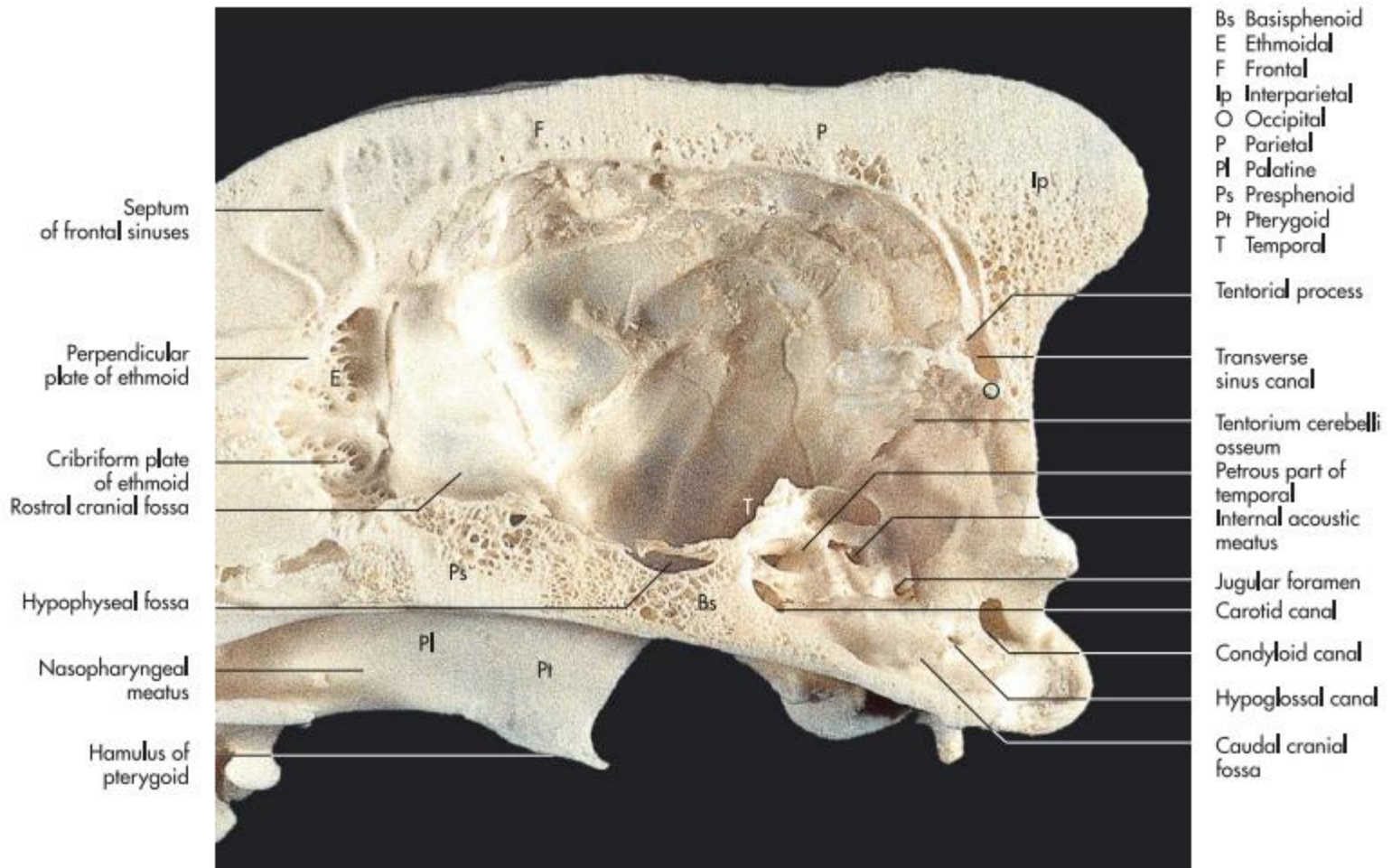
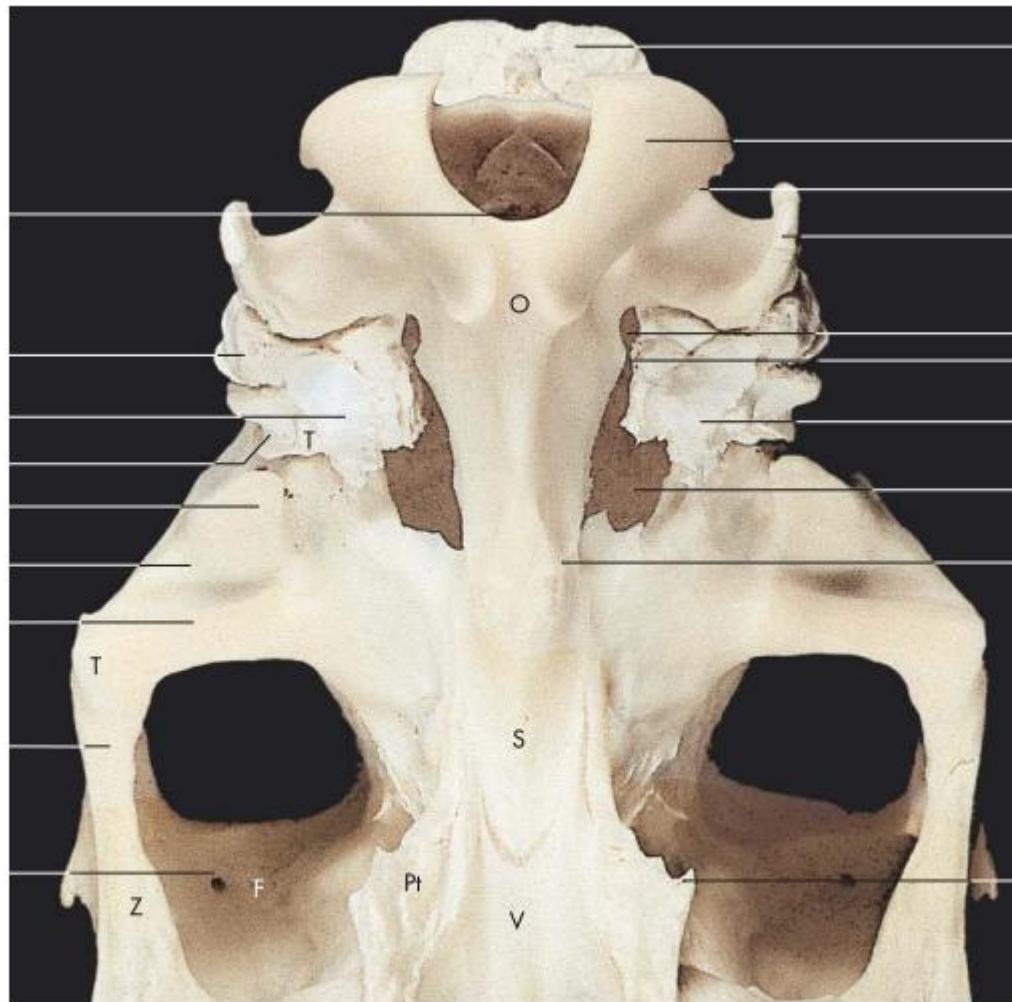


Fig. 2.5 Bones of the cranial part of a canine skull (medial aspect of sagittal section).

- F Frontal
- O Occipital
- Pt Pterygoid
- S Sphenoid
- T Temporal
- Z Zygomatic
- V Vomer



- Squamous part of the occipital bone
- Occipital condyle
- Ventral condylar fossa
- Paracondylar process
- Jugular foramen
- Petro-occipital fissure
- Petrous part of the temporal bone
- Foramen lacerum
- Muscular tubercle
- Hamulus of the pterygoid bone

Fig. 2.12 Bones of the cranial part of an equine skull (ventral aspect).

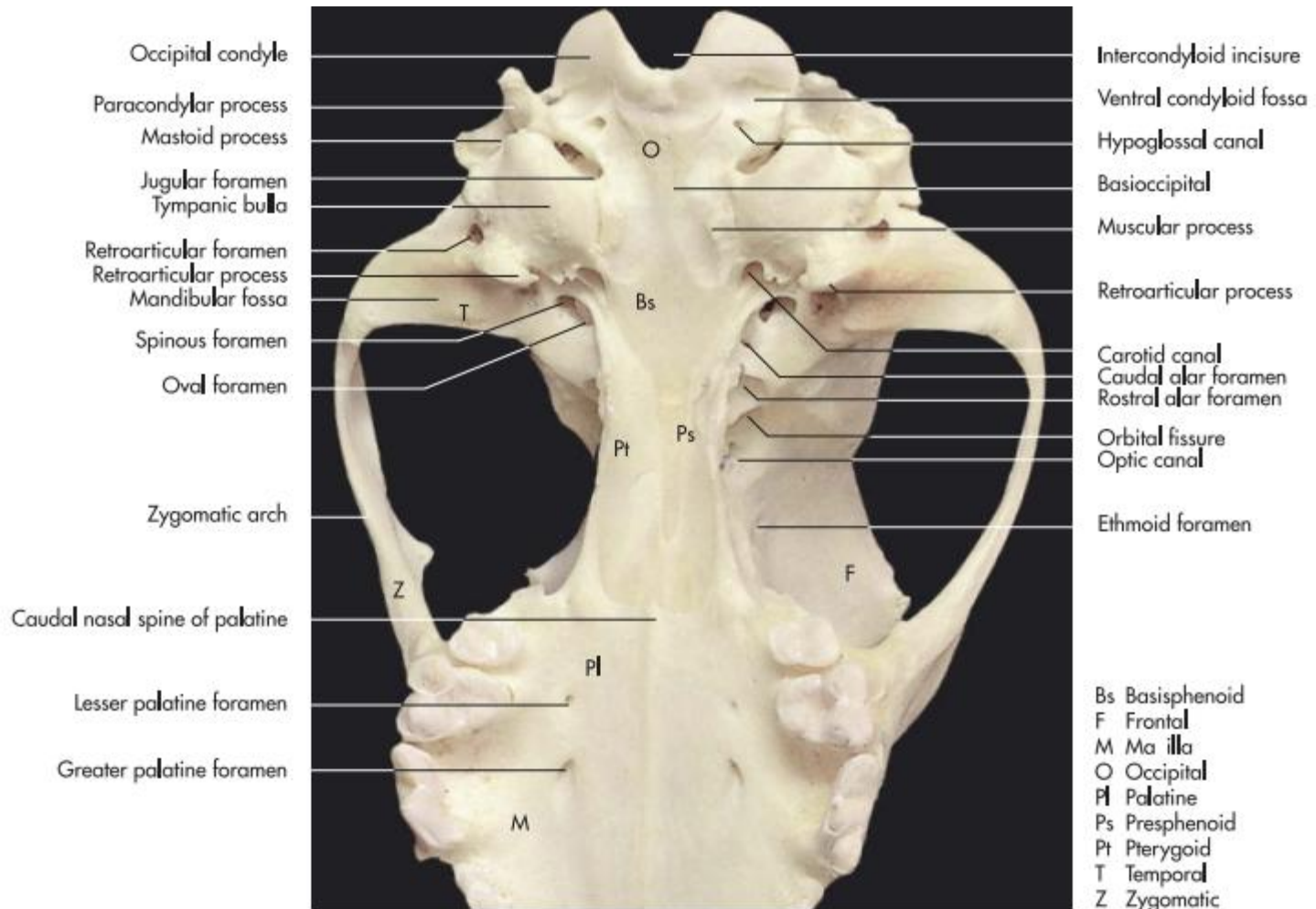


Fig. 2.6 Bones of the cranial part of a canine skull (ventral aspect).

OS SPHENOIDALE

- **Os basisphenoidale**
- **Os presphenoidale**

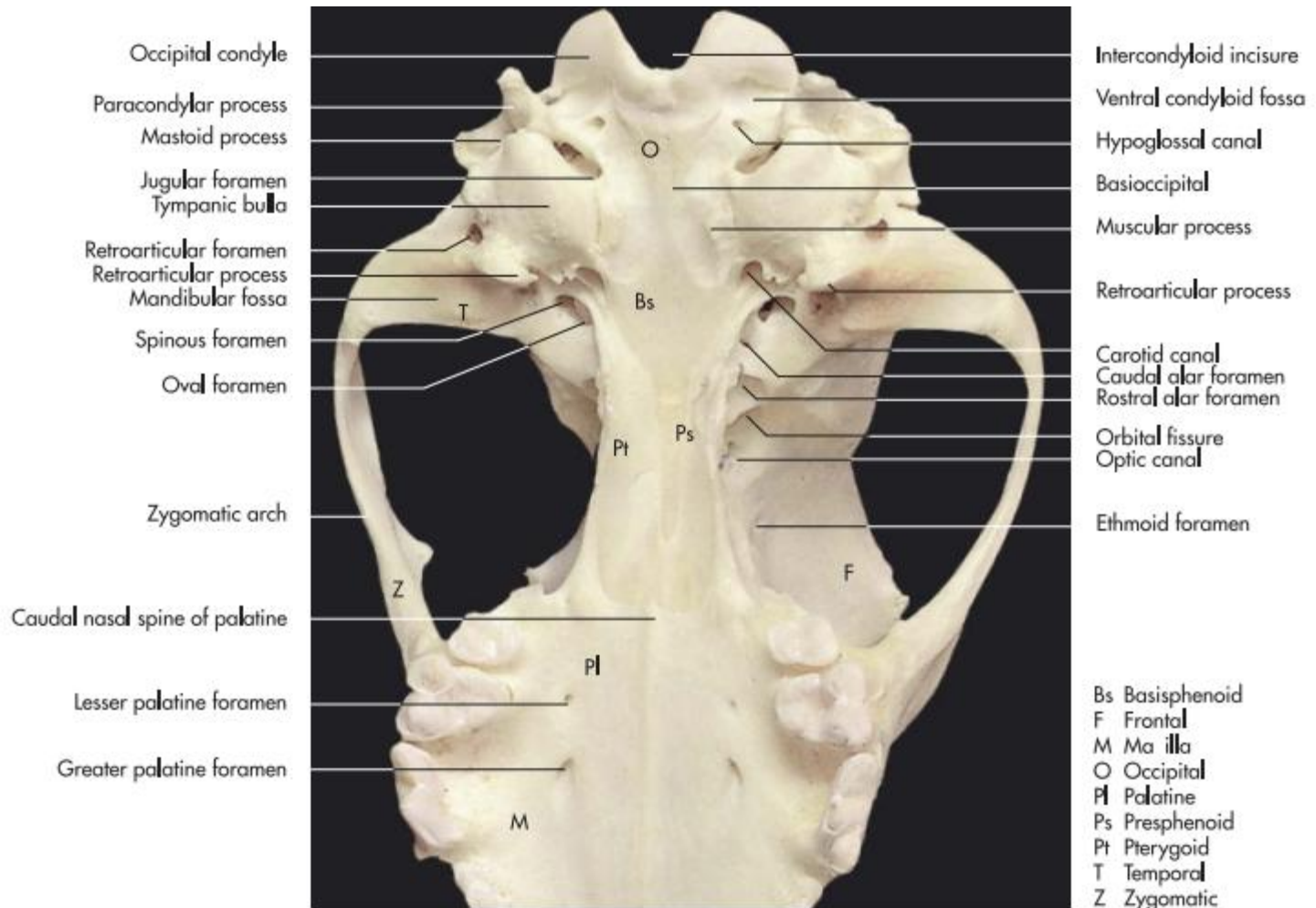


Fig. 2.6 Bones of the cranial part of a canine skull (ventral aspect).

- **Os basisphenoidale:**
 - **Corpus**
 - **Ala**
 - **Processus pterygoideus**



Fig. 2.14 Bones of the cranial part of a bovine skull (ventral aspect).

- **Os presphenoidale:**
 - **Corpus**
 - **Ala**
 - **Sinus sphenoidalis**

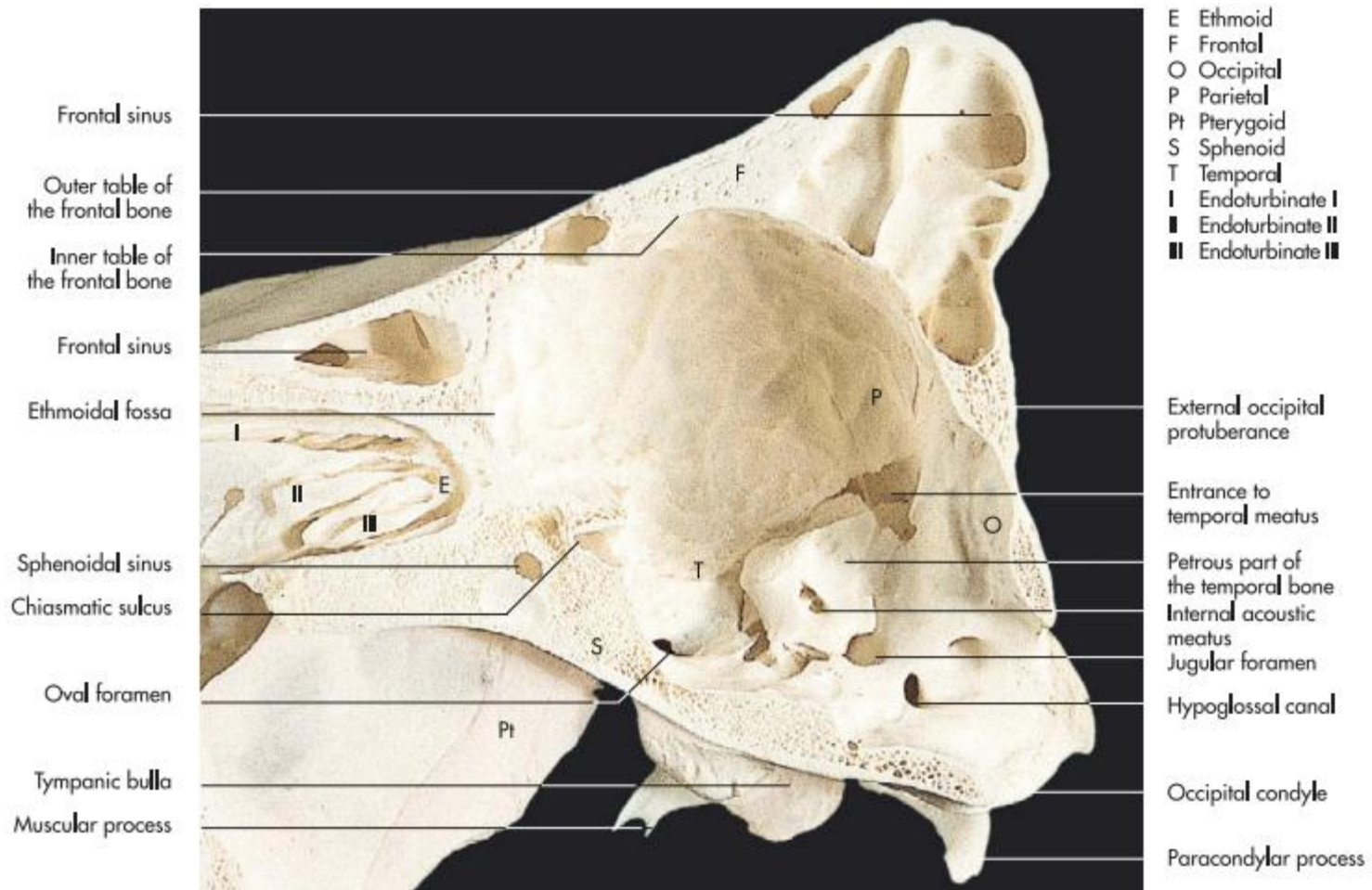


Fig. 2.13 Bones of the cranial part of a bovine skull (medial aspect of sagittal section).

- **Eq:**

- **Foramen ethmoidale**
- **Foramen opticum**
- **Fissura orbitalis**
- **Foramen rotundum**

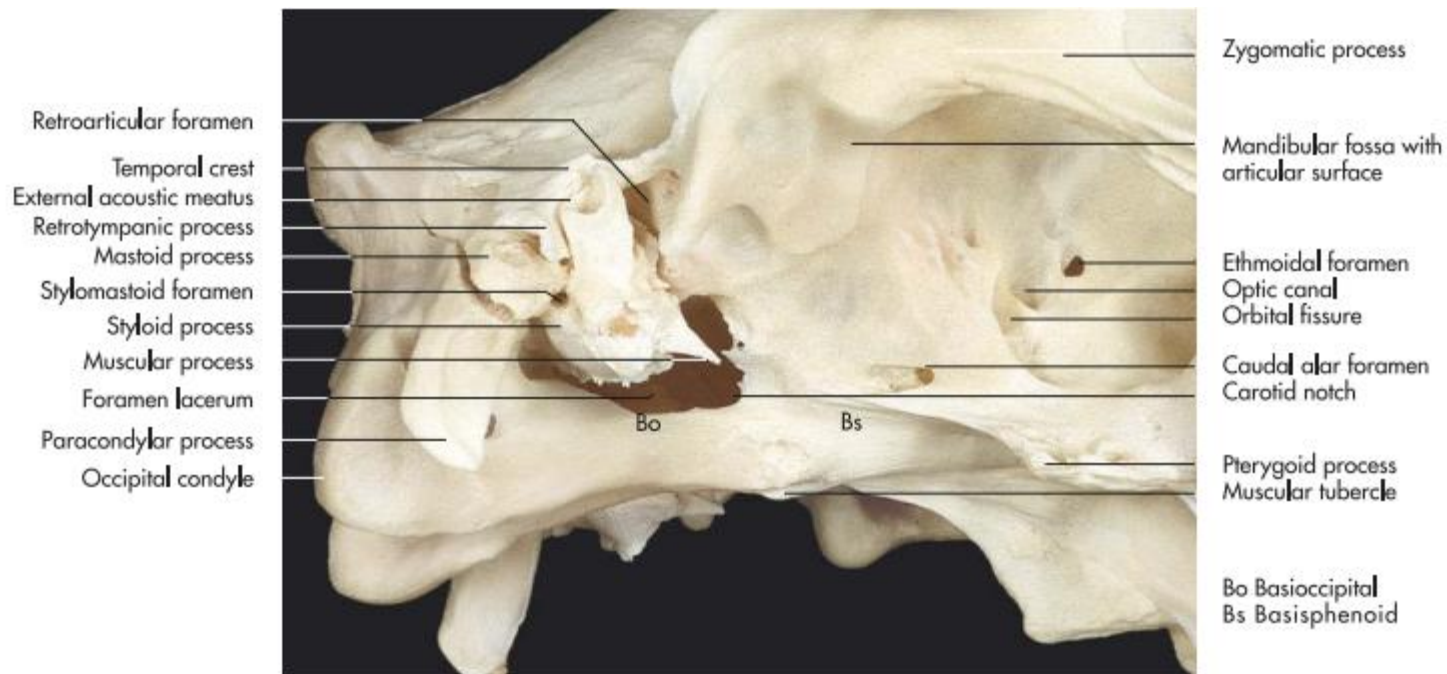


Fig. 2.40 Caudal part of an equine skull (ventrolateral aspect).

- **Ru, su:**
 - **Foramen ethmoidale**
 - **Foramen opticum**
 - **Foramen orbitorotundum**

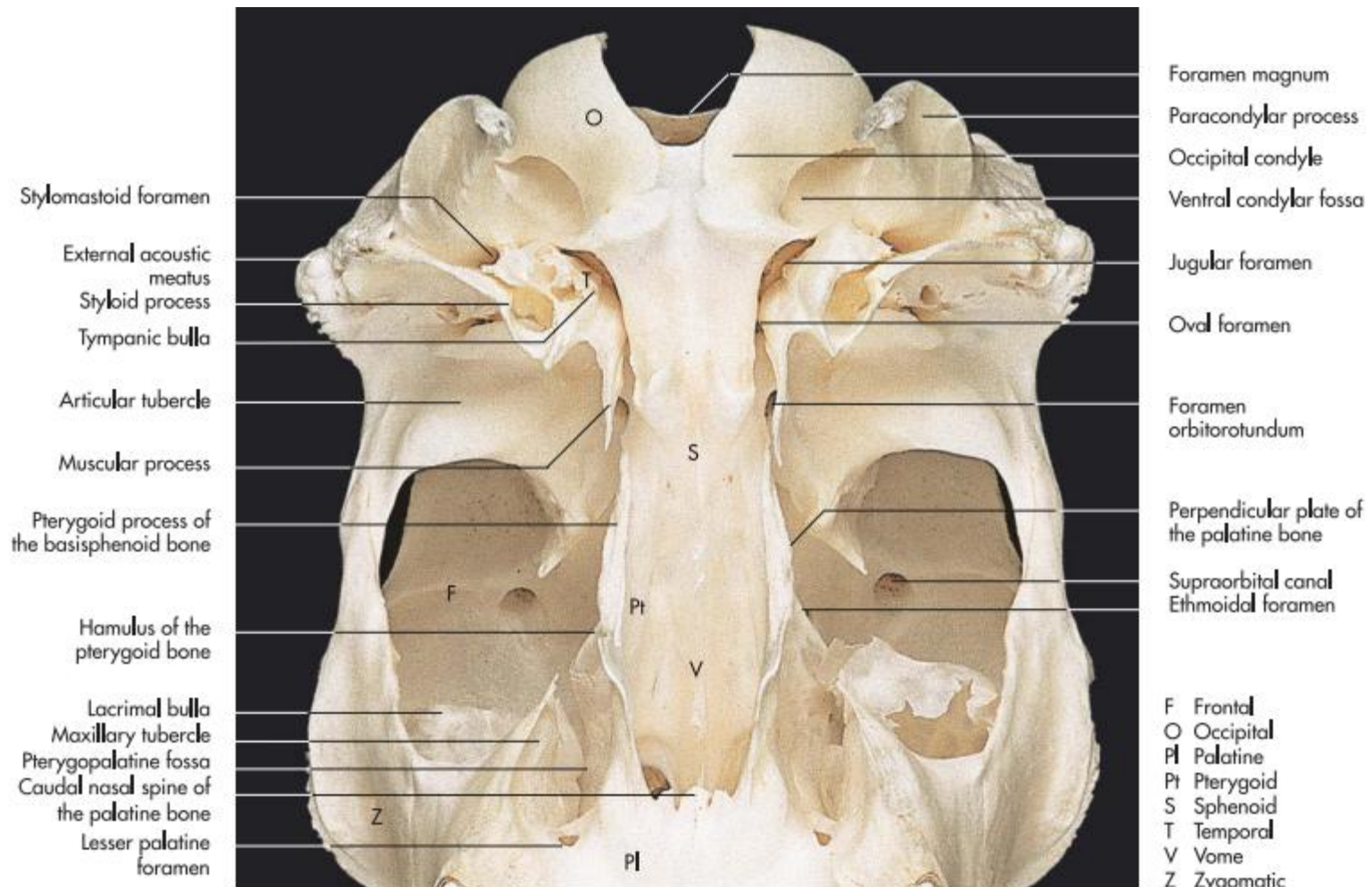


Fig. 2.14 Bones of the cranial part of a bovine skull (ventral aspect).

- **Car:**
 - **Foramen ethmoidale**
 - **Foramen opticum**
 - **Fissura orbitalis**
 - **Foramen alare orale**
 - **Foramen alare aborale**
 - **Foramen ovale**

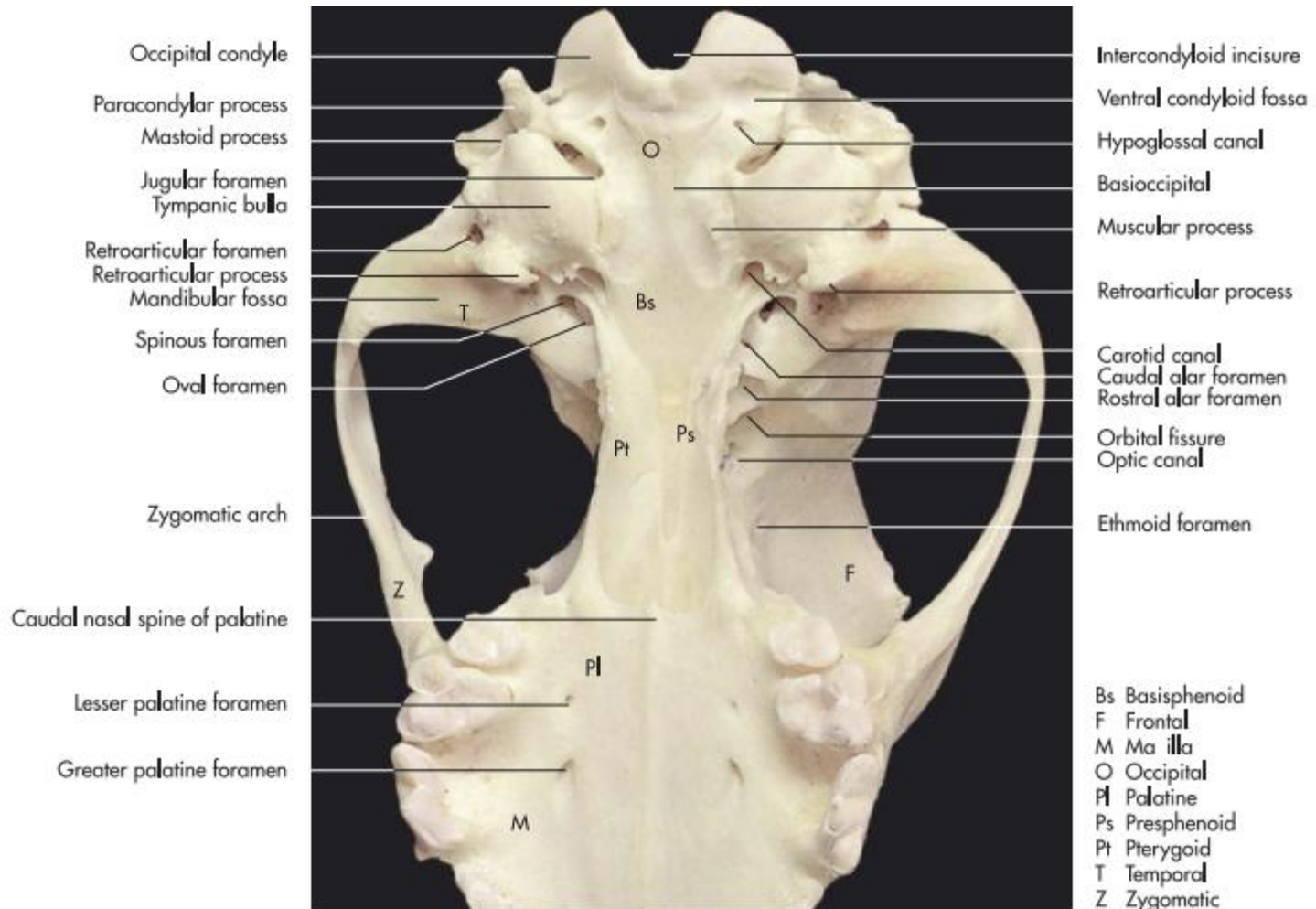


Fig. 2.6 Bones of the cranial part of a canine skull (ventral aspect).

- **Foramen opticum → Sulcus chiasmatis → Fossa hypophysialis**

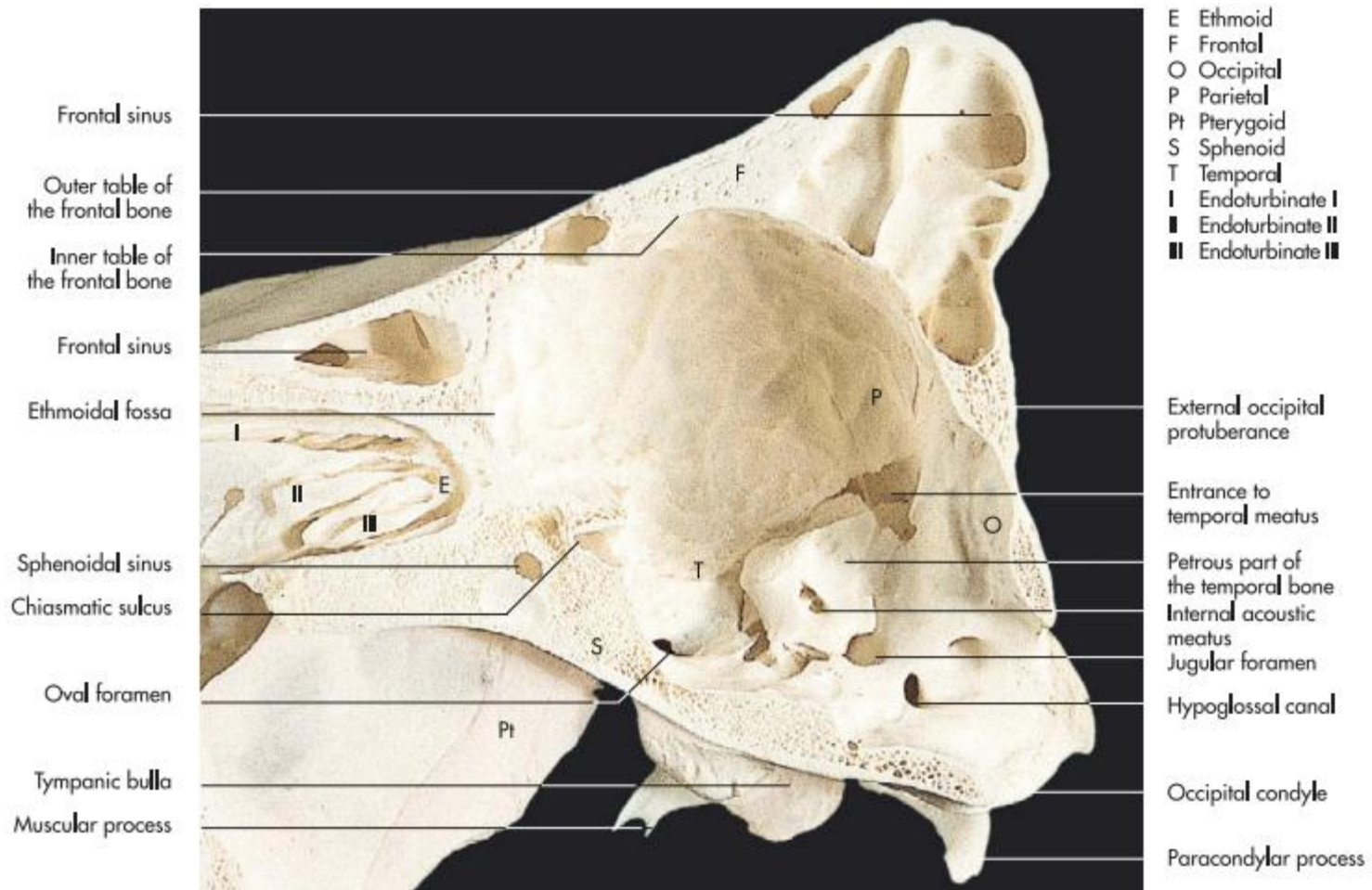


Fig. 2.13 Bones of the cranial part of a bovine skull (medial aspect of sagittal section).

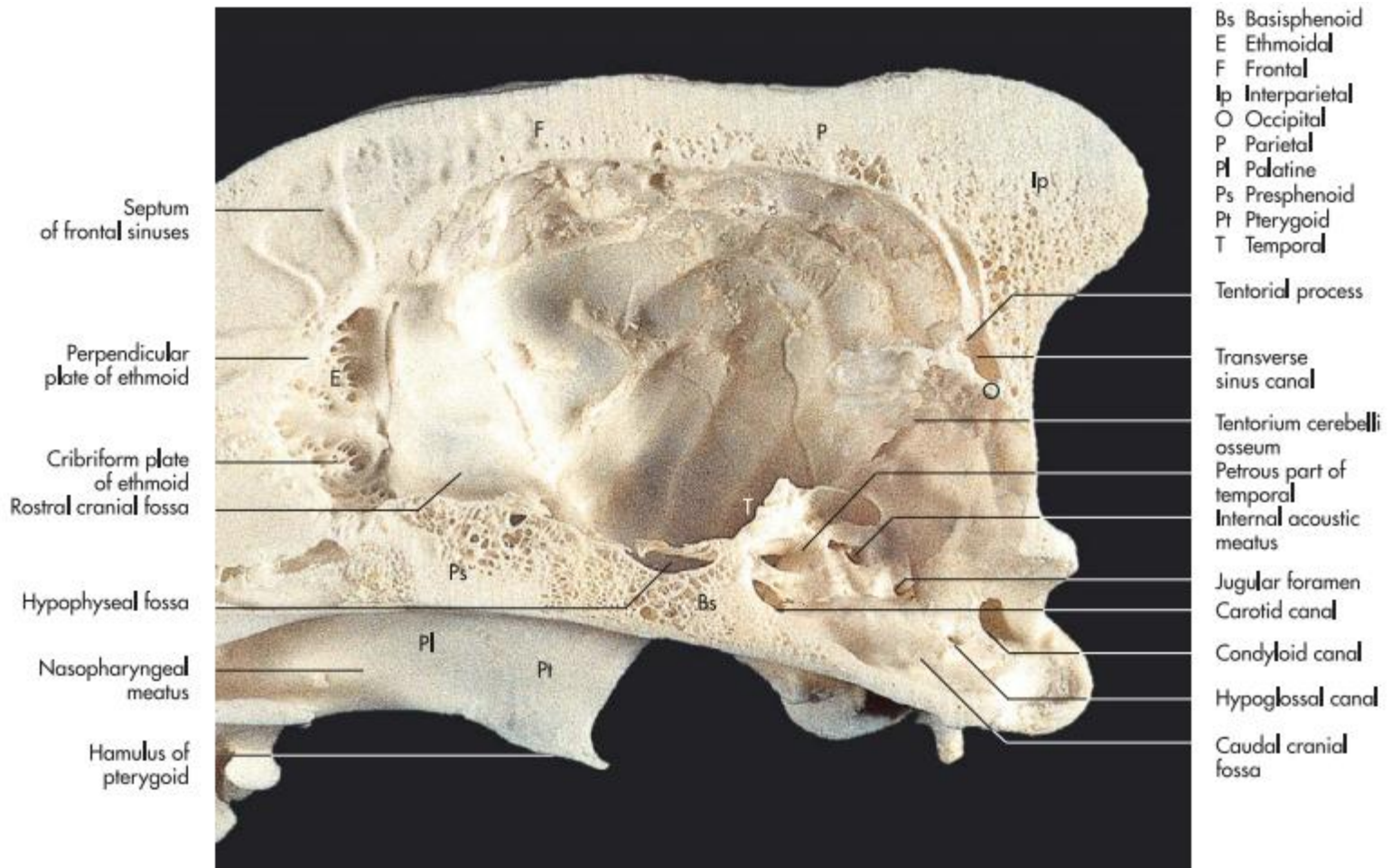


Fig. 2.5 Bones of the cranial part of a canine skull (medial aspect of sagittal section).

- **Foramen trochleare**

OS ETHMOIDALE

- **Lamina cribrosa**
 - Crista galli
- **Lamina perpendicularis**
- **Lamina orbitalis**
- **Lamina basalis**
- **Labyrinthus ethmoidalis**
 - Ethmoturbinalia

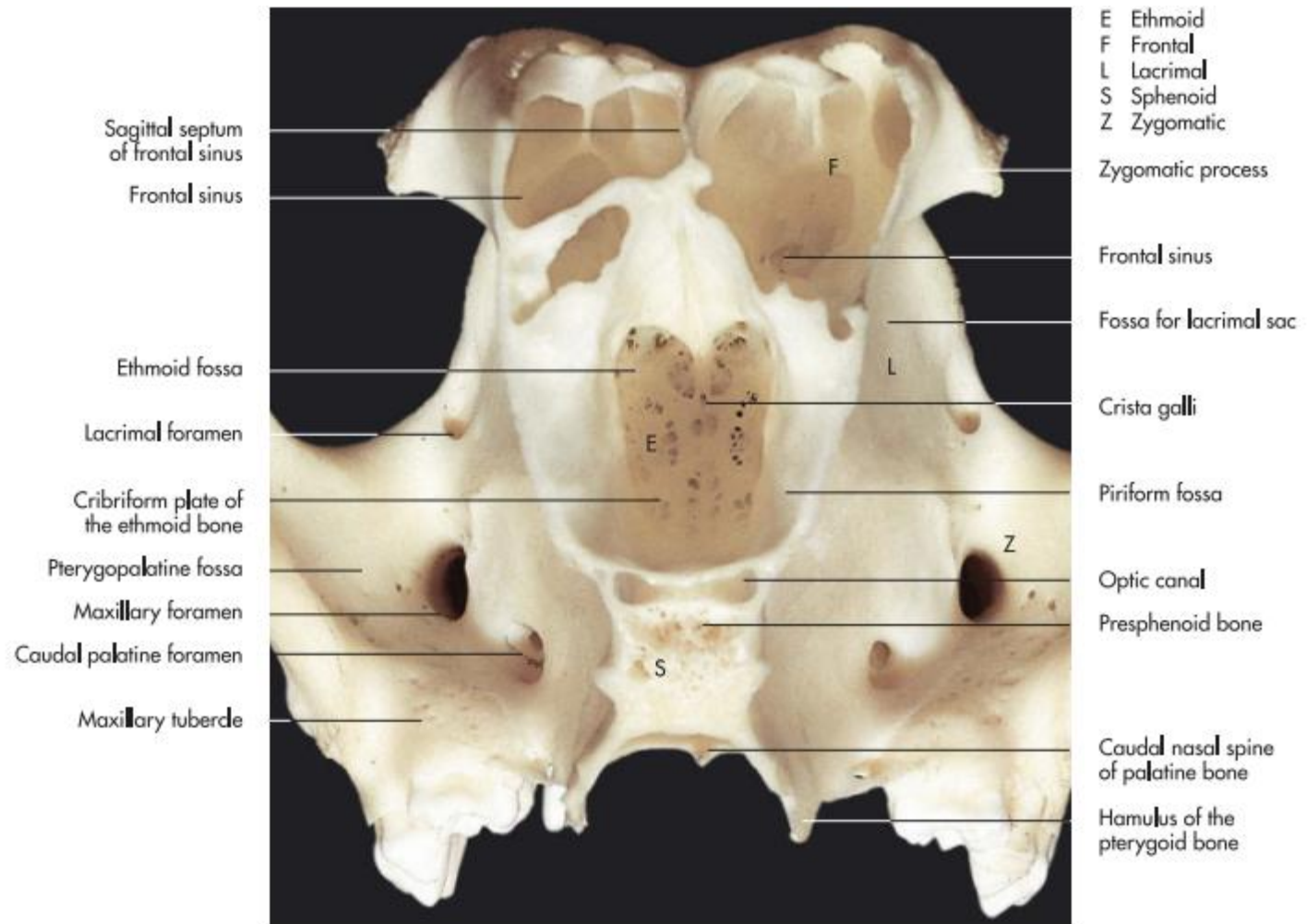


Fig. 2.8 Transverse section of a canine cranial cavity caudal to the zygomatic process of the frontal bone.

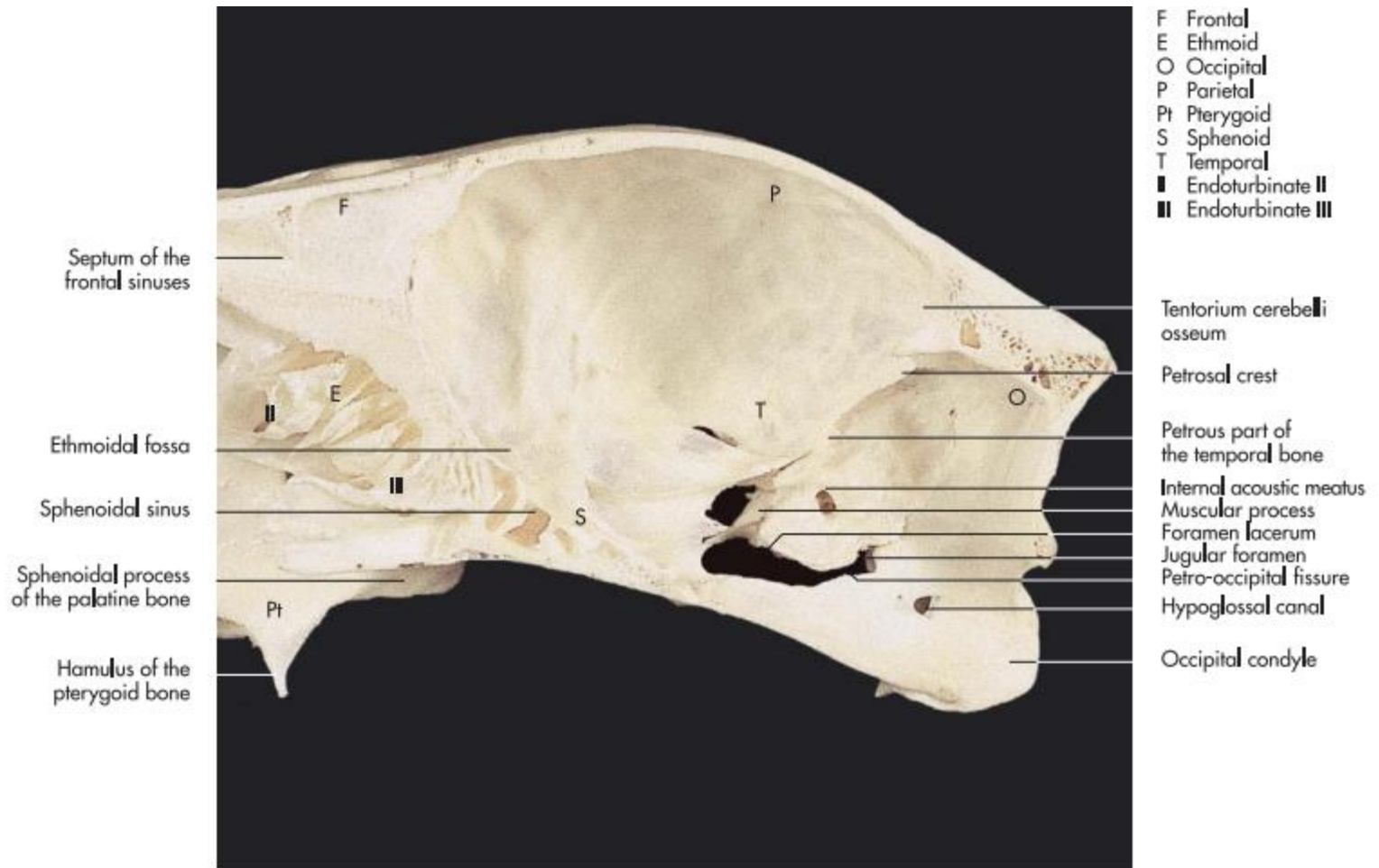


Fig. 2.10 Bones of the cranial part of an equine skull (medial aspect of sagittal section).

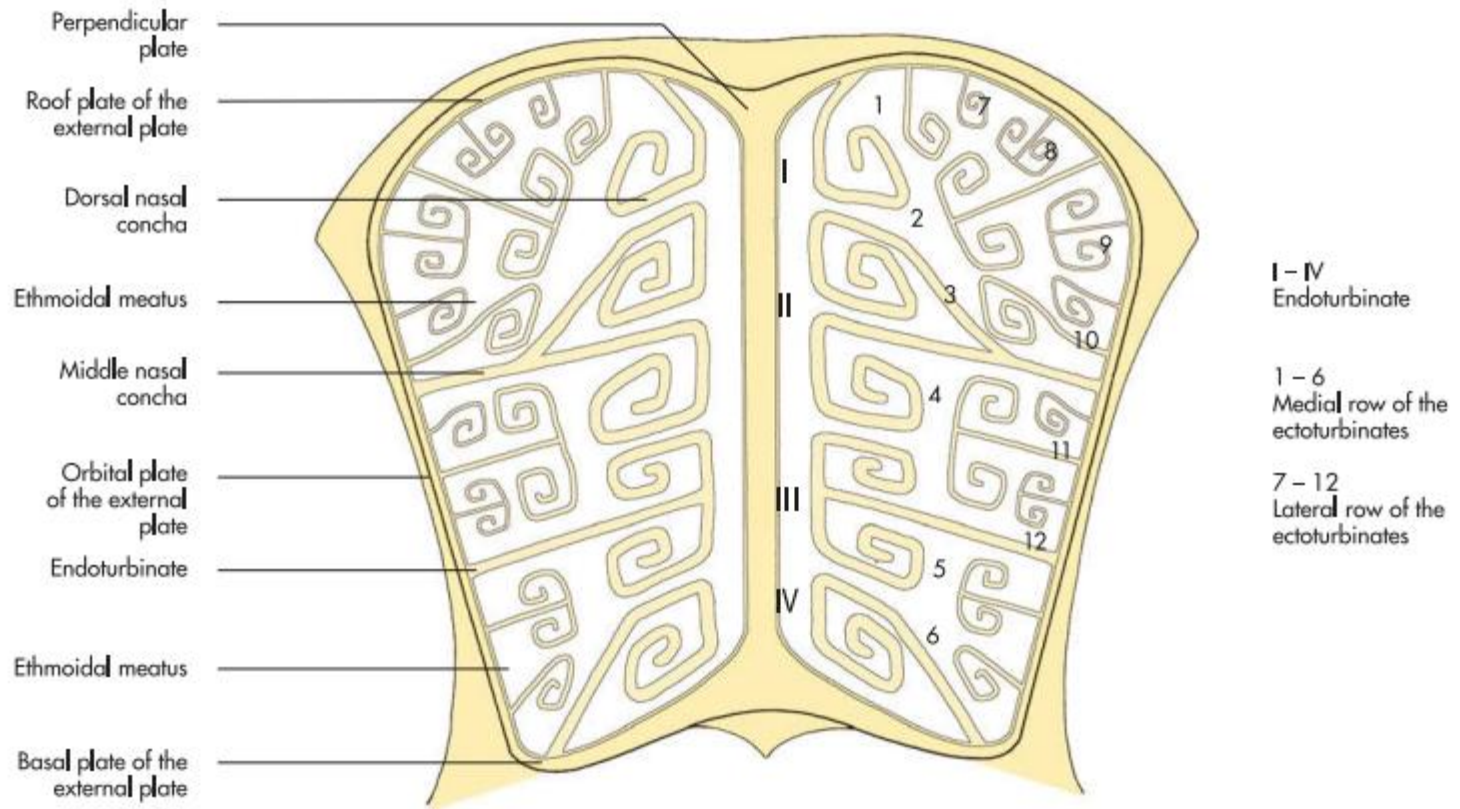


Fig. 2.17 Transverse section of the ethmoturbinates of the horse (schematic); fig. based on data from Nickel, Schummer and Seiferle, 1992.

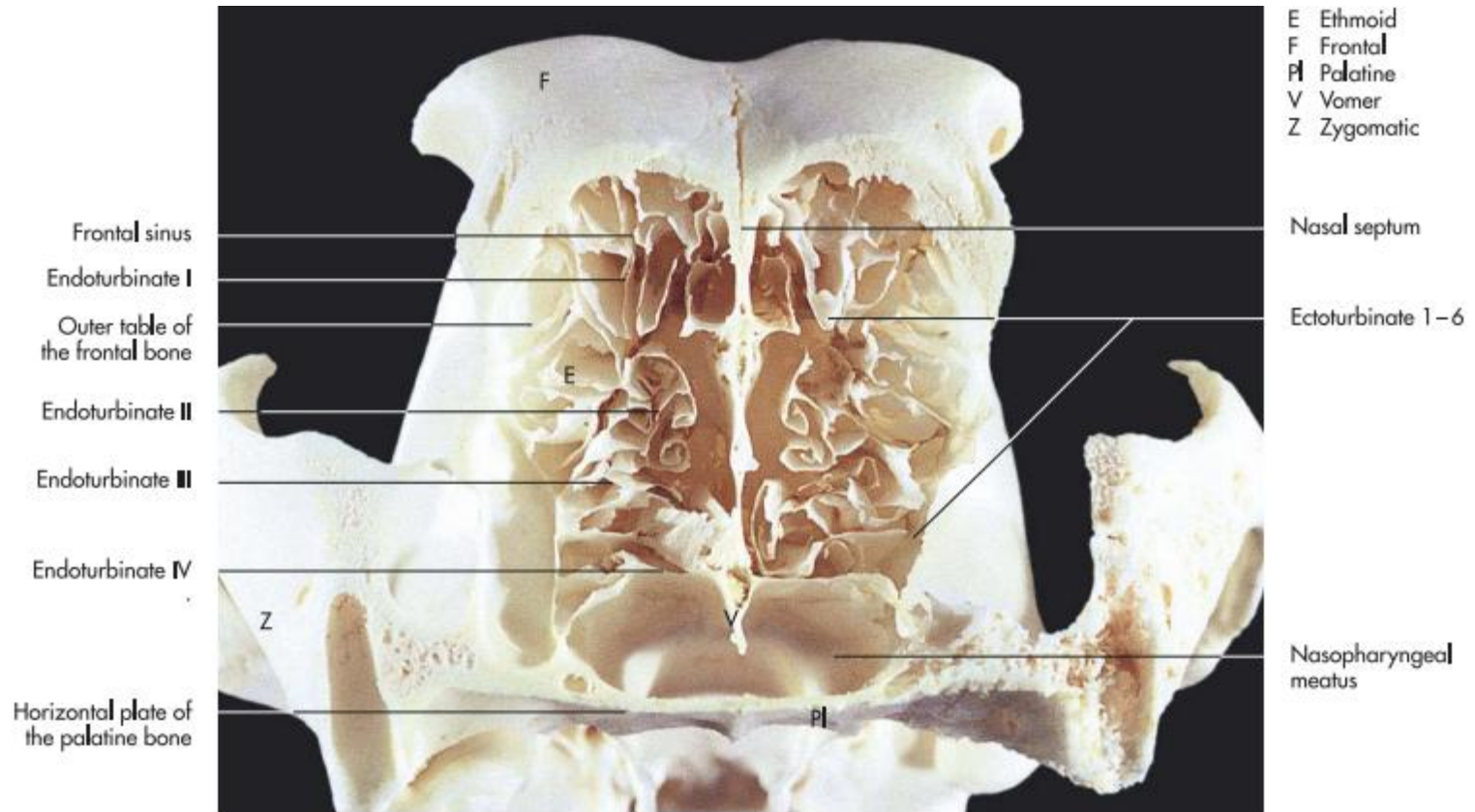
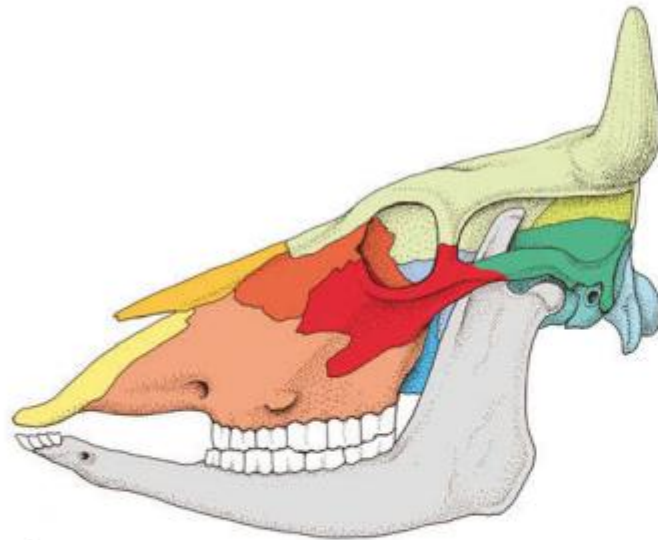


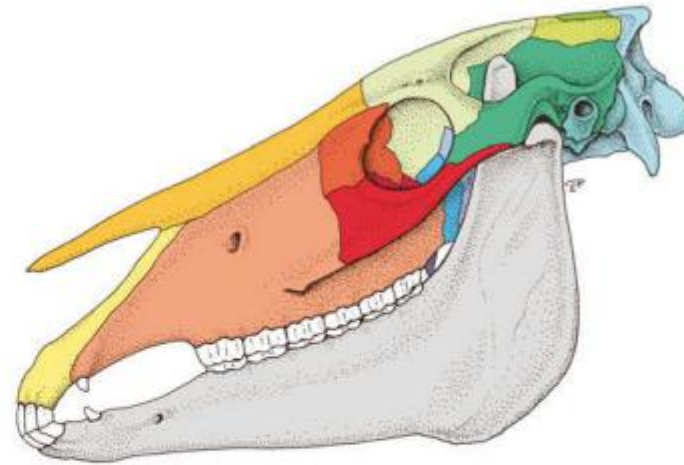
Fig. 2.16 Transverse section of the nasal cavity of a dog with endo- and ectoturbinates.

OS INTERPARIETALE

- **Processus tentoricus (eq, Car)**
- **Protuberantia occipitalis interna (Ov)**



A



B

Yellow Incisive
 Orange Nasal
 Light brown Maxilla
 Red Lacrimal

Red Zygomatic
 Light green Frontal
 Olive green Parietal
 Dark green Interparietal

Teal Temporal, squamous part
 Light blue Temporal, petrous part
 Light blue Occipital
 Grey Mandible

Blue Palatine
 Light blue Sphenoid
 Purple Pterygoid

Fig. 2.2 Bones of the skull and mandible of the ox (A) and horse (B) (schematic, lateral aspect); fig. based on data from Ellenberger and Baum, 1943.

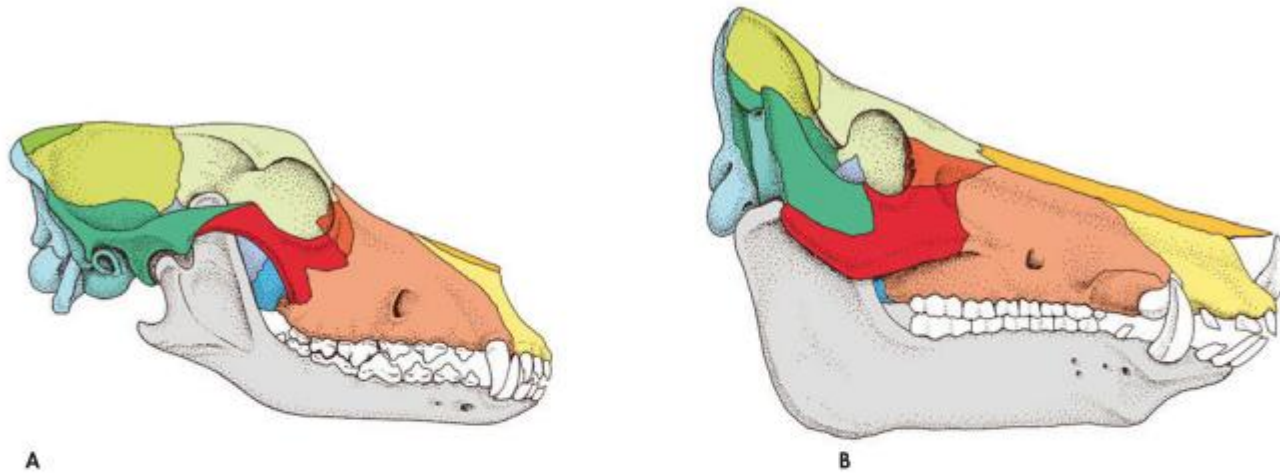


Fig. 2.1 Bones of the skull and mandible of the dog (A) and pig (B) (schematic, lateral aspect); fig. based on data from Ellenberger and Baum, 1943.

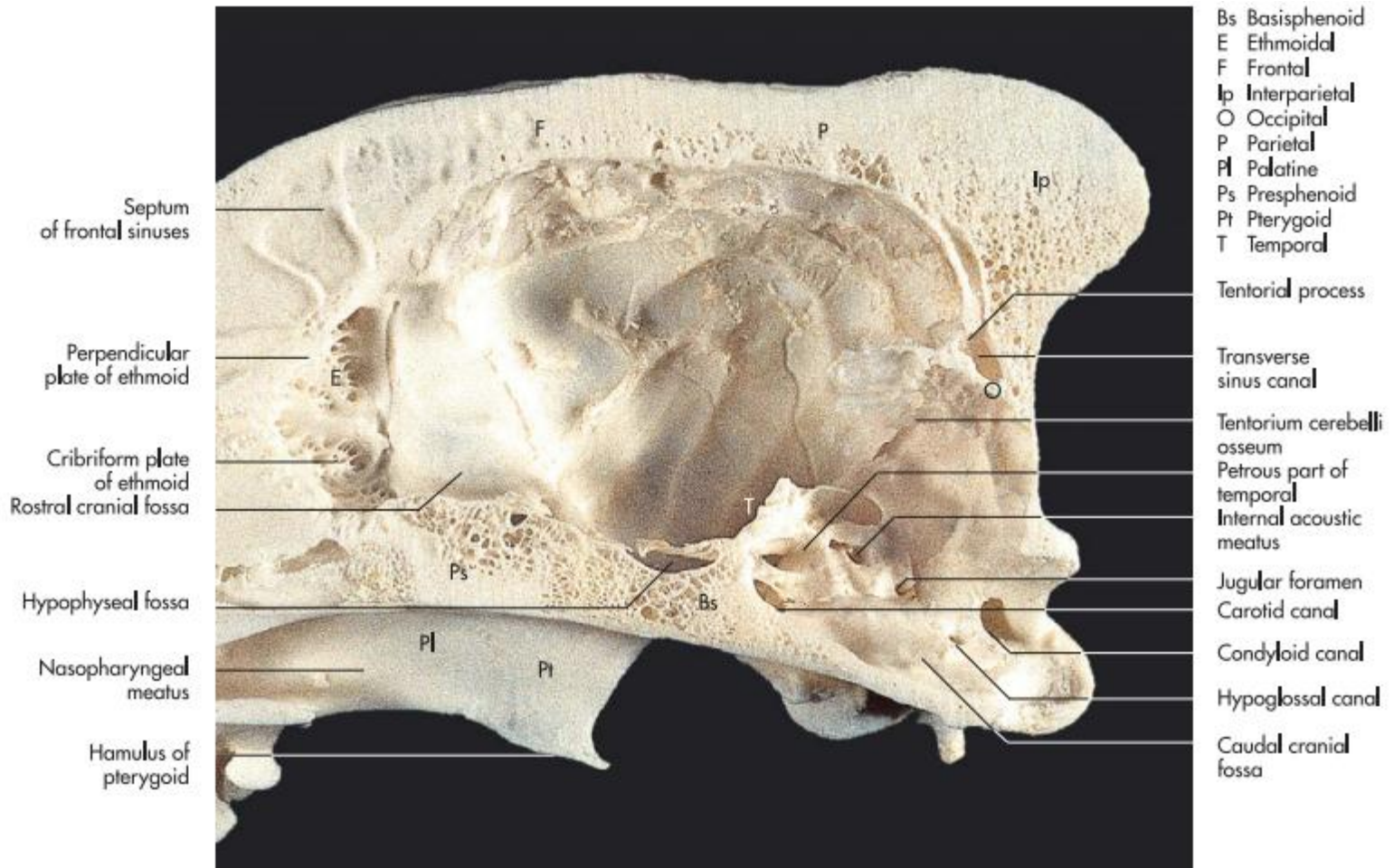


Fig. 2.5 Bones of the cranial part of a canine skull (medial aspect of sagittal section).

OS PARIETALE

- **Linea temporalis**

F Frontal
 I Incisive
 Ip Interparietal
 M Maxilla
 N Nasal
 P Parietal
 T Temporal
 Z Zygomatic

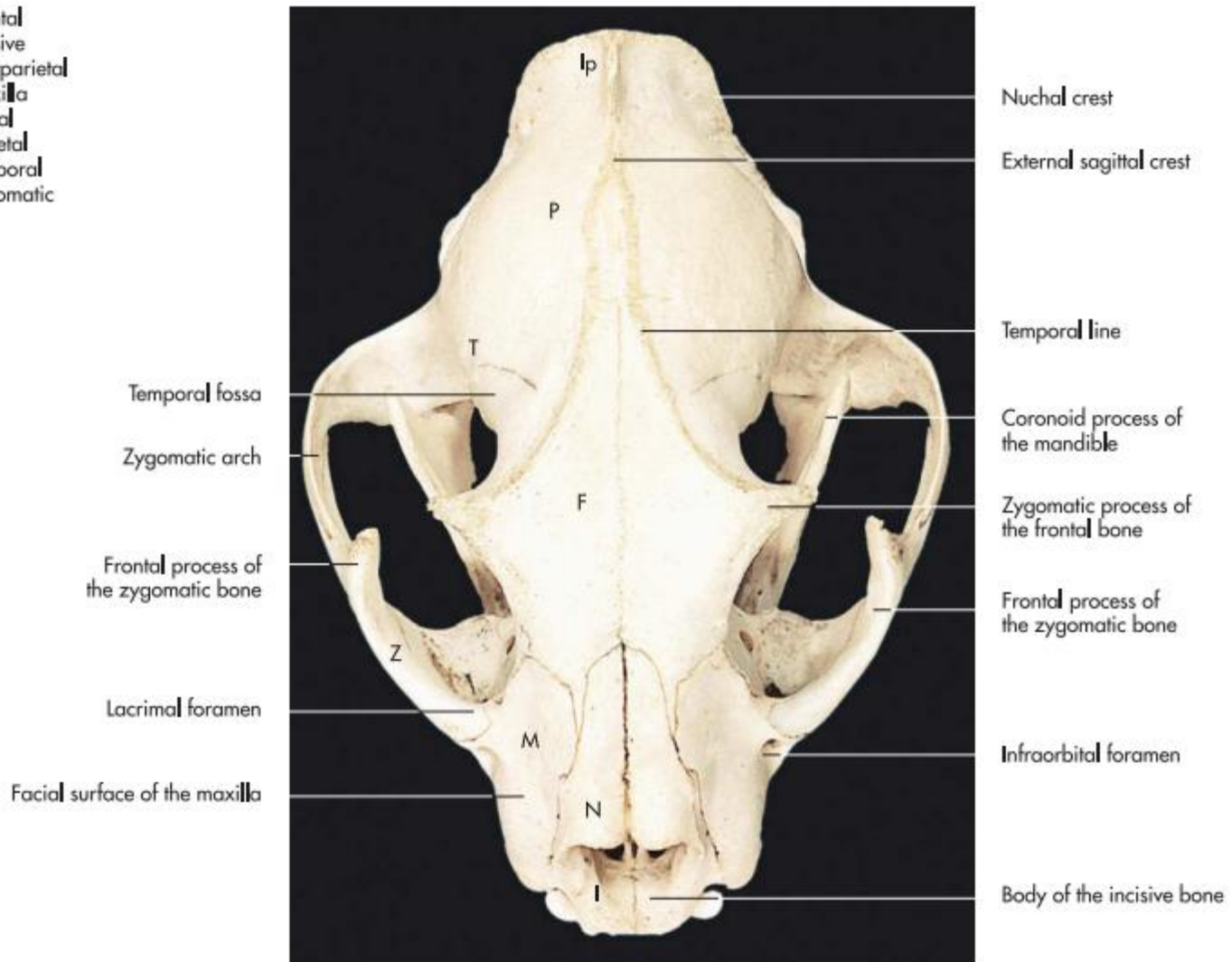


Fig. 2.18 Skull of a puma (dorsal aspect).

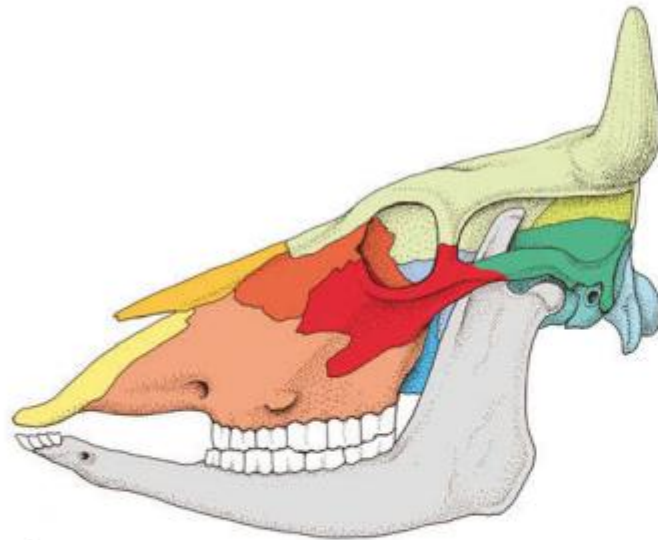


- www.123rf.com

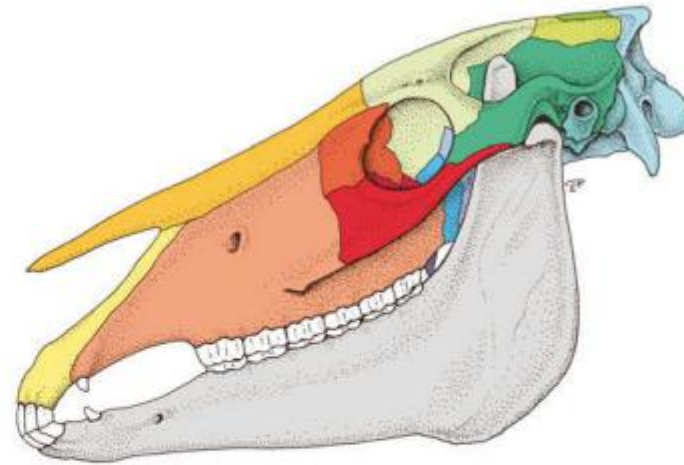
OS FRONTALE

- **Foramen supraorbitale**
- **Squama frontalis**
- **Pars orbitalis**
- **Pars nasalis**

- **Processus cornualis (Ru)**
- **Processus zygomaticus**
- **Margo supraorbitalis**
- **Sinus frontalis**



A



B

Yellow Incisive
 Orange Nasal
 Light brown Maxilla
 Red Lacrimal

Red Zygomatic
 Light green Frontal
 Olive green Parietal
 Dark green Interparietal

Teal Temporal, squamous part
 Light blue Temporal, petrous part
 Light blue Occipital
 Grey Mandible

Cyan Palatine
 Light blue Sphenoid
 Purple Pterygoid

Fig. 2.2 Bones of the skull and mandible of the ox (A) and horse (B) (schematic, lateral aspect); fig. based on data from Ellenberger and Baum, 1943.

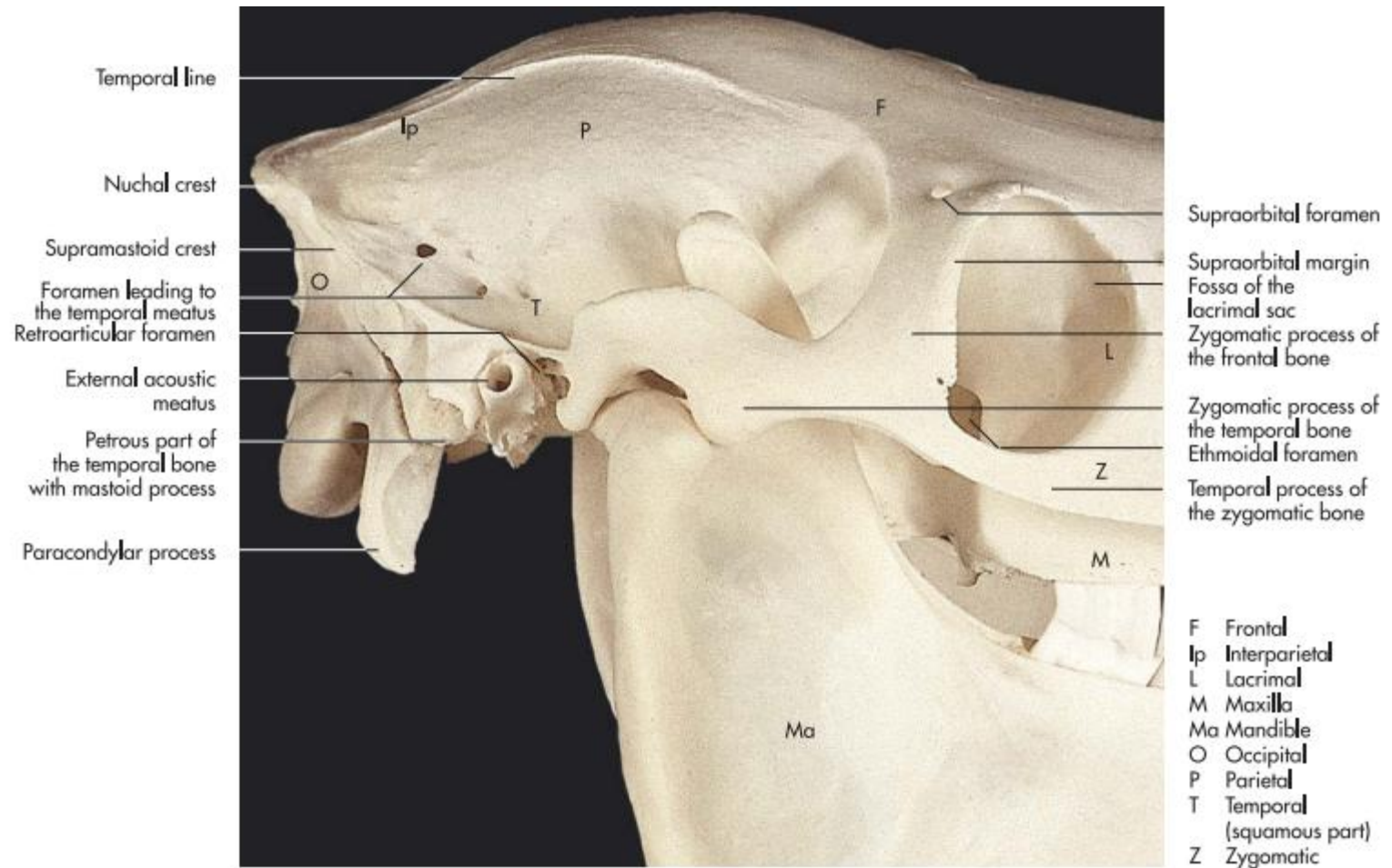


Fig. 2.9 Bones of the cranial part of an equine skull (lateral aspect).

F Frontal
 Ip Interparietal
 M Maxilla
 O Occipital
 P Parietal
 T Temporal

Foramen leading to the temporal meatus

Zygomatic process of the temporal bone

Coronoid process of the mandible

Facial crest



Nuchal crest

External sagittal crest

Supramastoid crest

Temporal line

Temporal fossa

Zygomatic process of the frontal bone

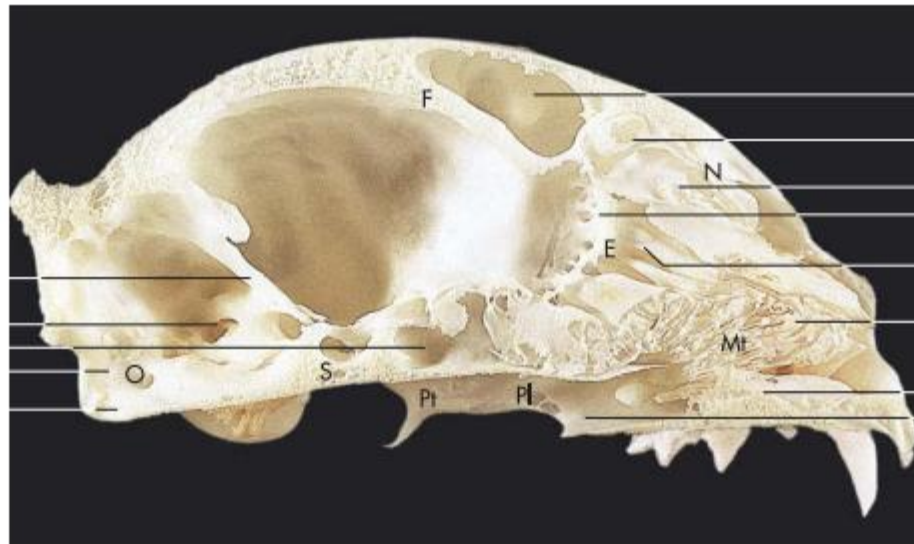
Supraorbital foramen

Rostral lacrimal process

Fig. 2.11 Bones of the cranial part of an equine skull (dorsal aspect).

E Ethmoid
 F Frontal
 N Nasal
 Mt Maxilloturbinate
 O Occipital
 Pl Palatine
 Pt Pterygoid
 S Sphenoid

 Tentorium cerebelli osseum
 Internal acoustic meatus
 Sphenoidal sinus
 Foramen magnum
 Tympanic bulla



Frontal sinus
 Ectoturbinate II
 Dorsal nasal concha
 Cribriform plate of
 the ethmoid bone
 Middle nasal concha
 Ventral nasal concha
 Vomer
 Nasopharyngeal meatus

Fig. 2.20 Skull of a cat (medial aspect of sagittal section).

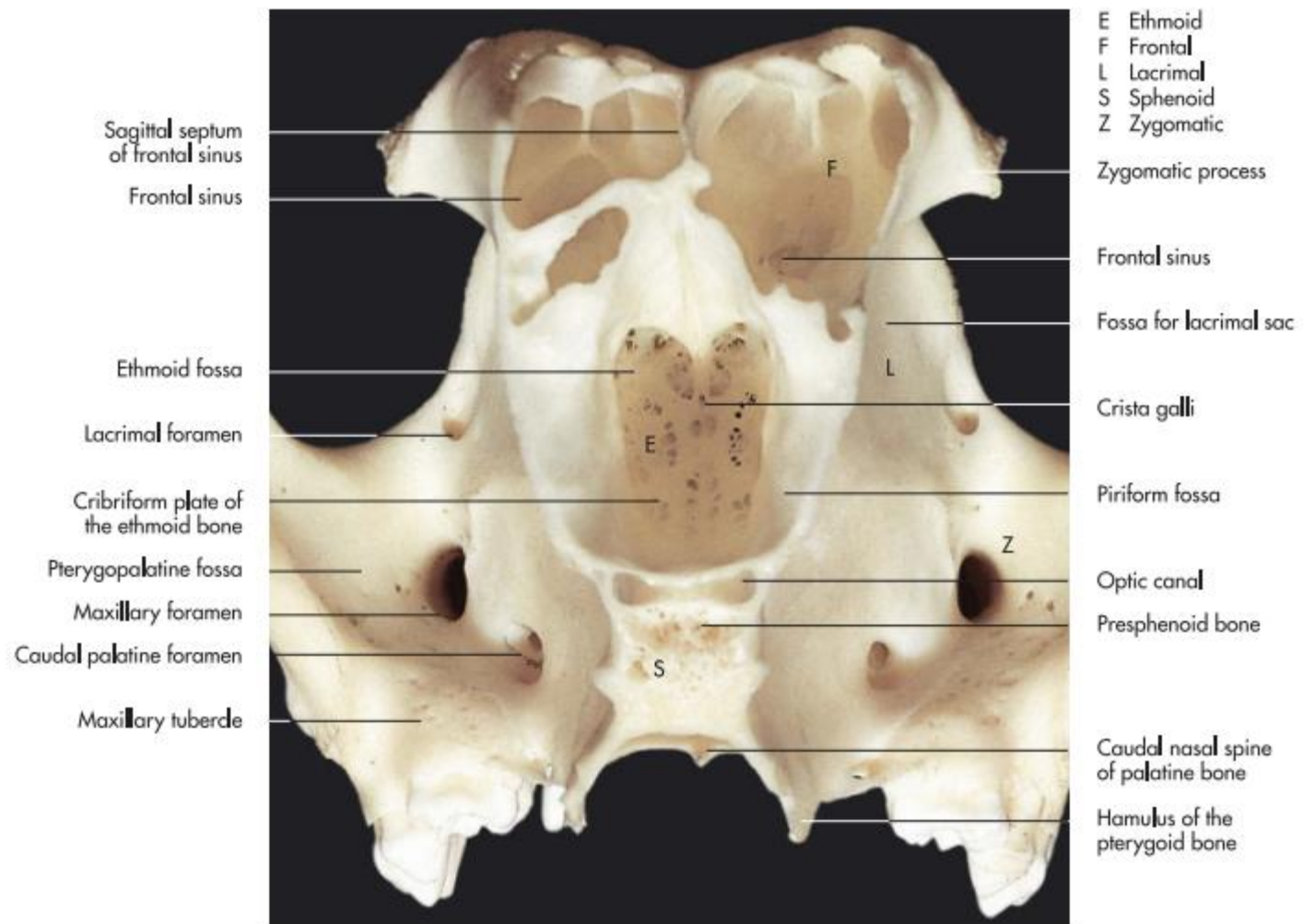
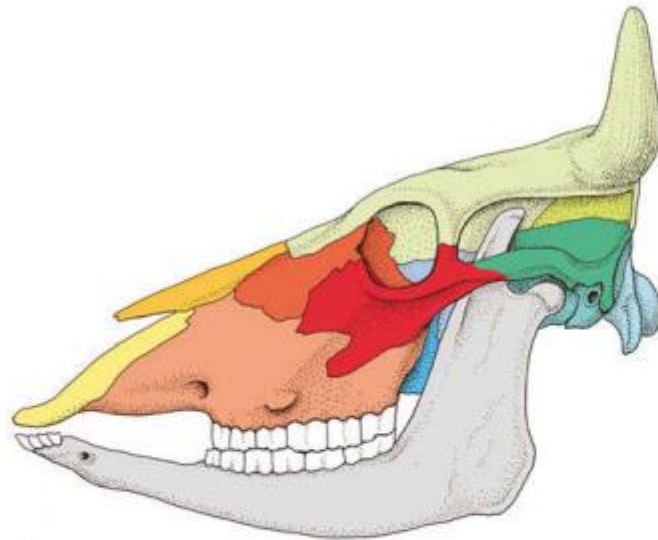


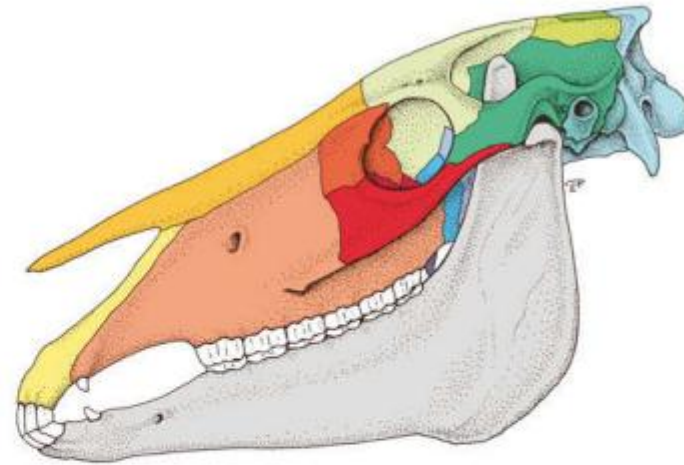
Fig. 2.8 Transverse section of a canine cranial cavity caudal to the zygomatic process of the frontal bone.

OS TEMPORALE

- **Pars squamosa**
- **Pars petrosa**
- **Pars tympanica**



A



B

- | | | | |
|--|---|---|--|
| Incisive | Zygomatic | Temporal, squamous part | Palatine |
| Nasal | Frontal | Temporal, petrous part | Sphenoid |
| Maxilla | Parietal | Occipital | Pterygoid |
| Lacrimal | Interparietal | Mandible | |

Fig. 2.2 Bones of the skull and mandible of the ox (A) and horse (B) (schematic, lateral aspect); fig. based on data from Ellenberger and Baum, 1943.

- **Pars squamosa:**
 - **Fossa temporalis**
 - **Facies articularis**
 - **Processus zygomaticus**

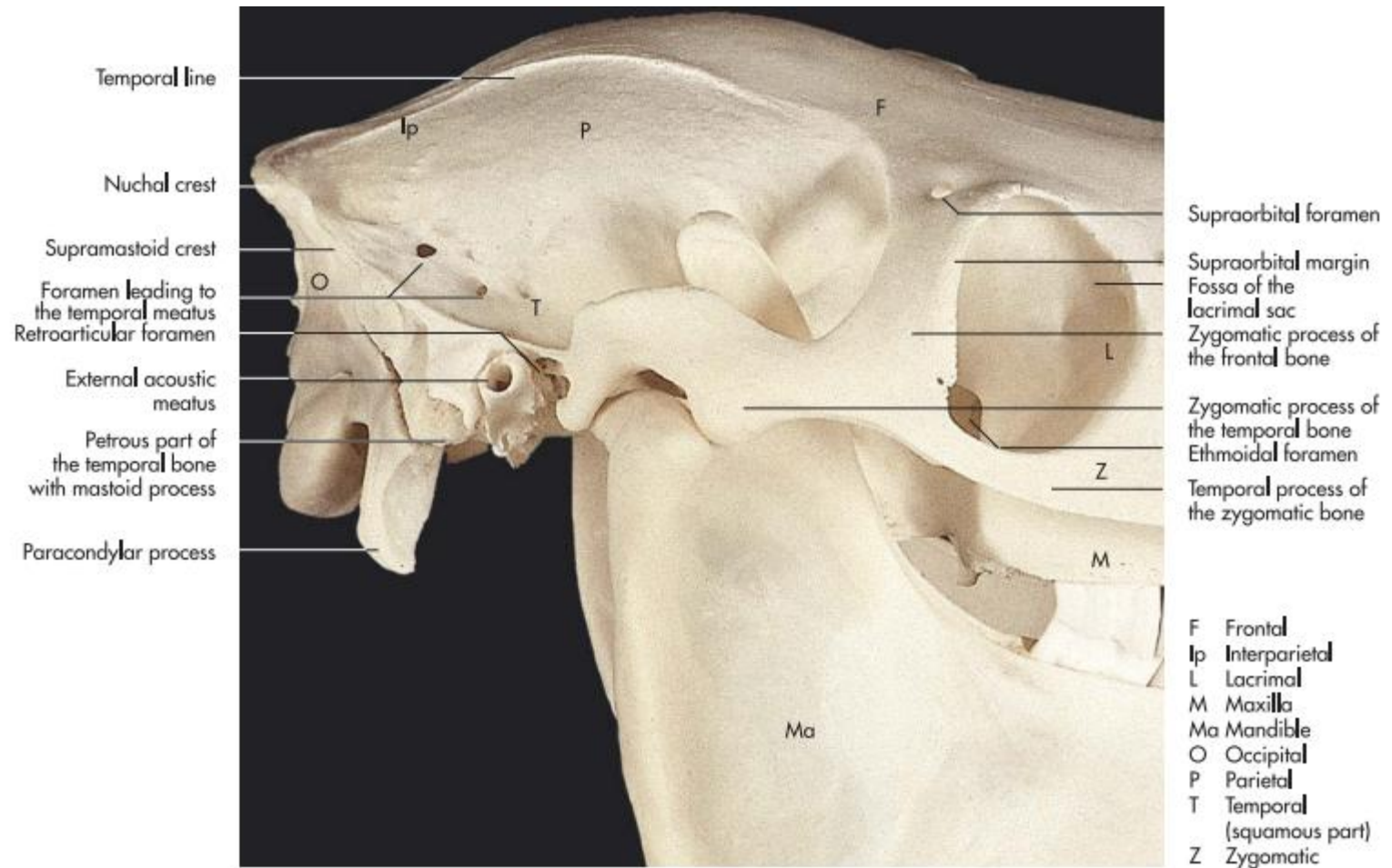


Fig. 2.9 Bones of the cranial part of an equine skull (lateral aspect).

- **Pars petrosa:**
 - **Porus acusticus internus**
 - **Meatus acusticus internus**
 - **Processus mastoideus**
 - **Processus styloideus (eq, Ru)**
 - **Foramen stylomastoideum**

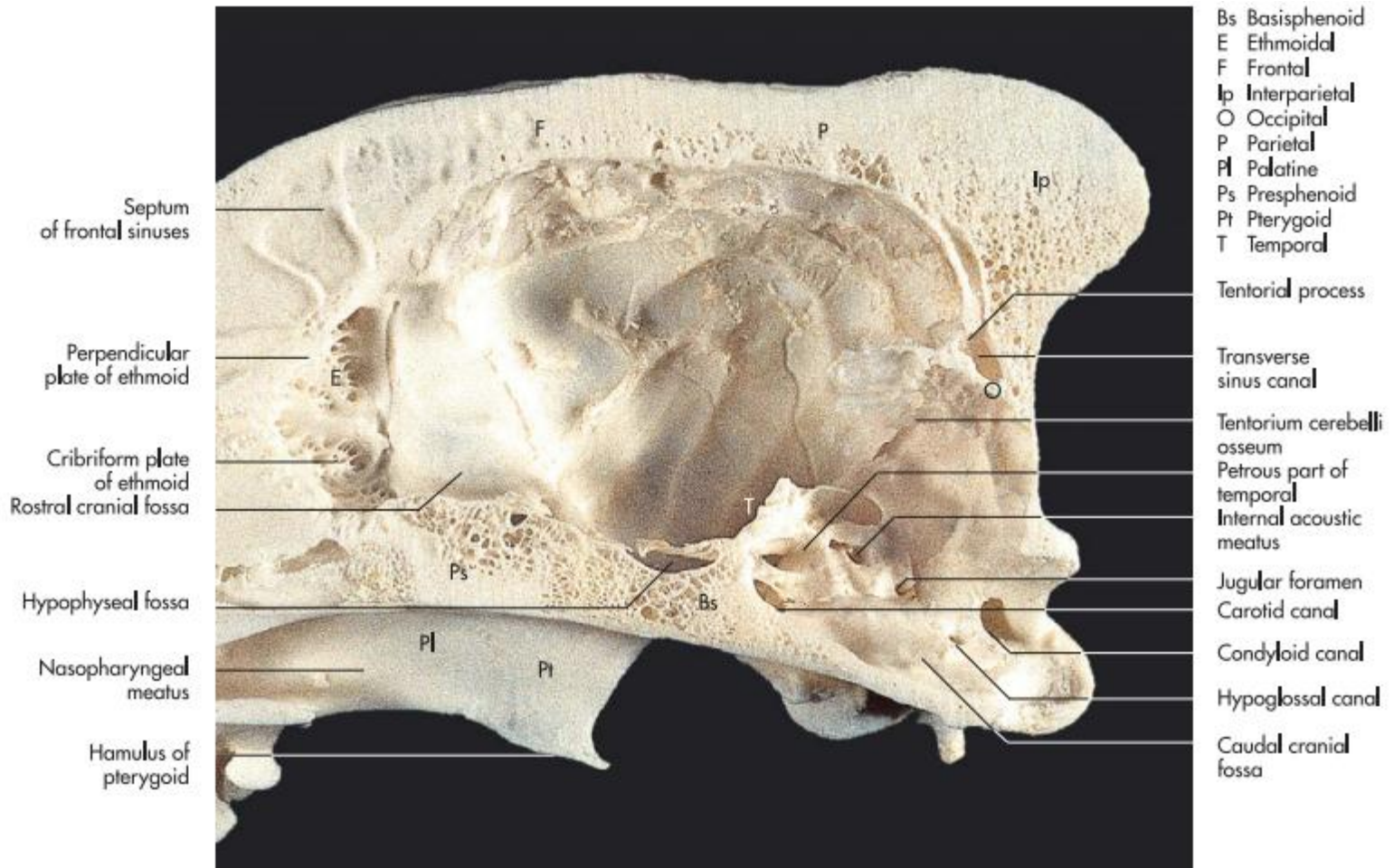


Fig. 2.5 Bones of the cranial part of a canine skull (medial aspect of sagittal section).

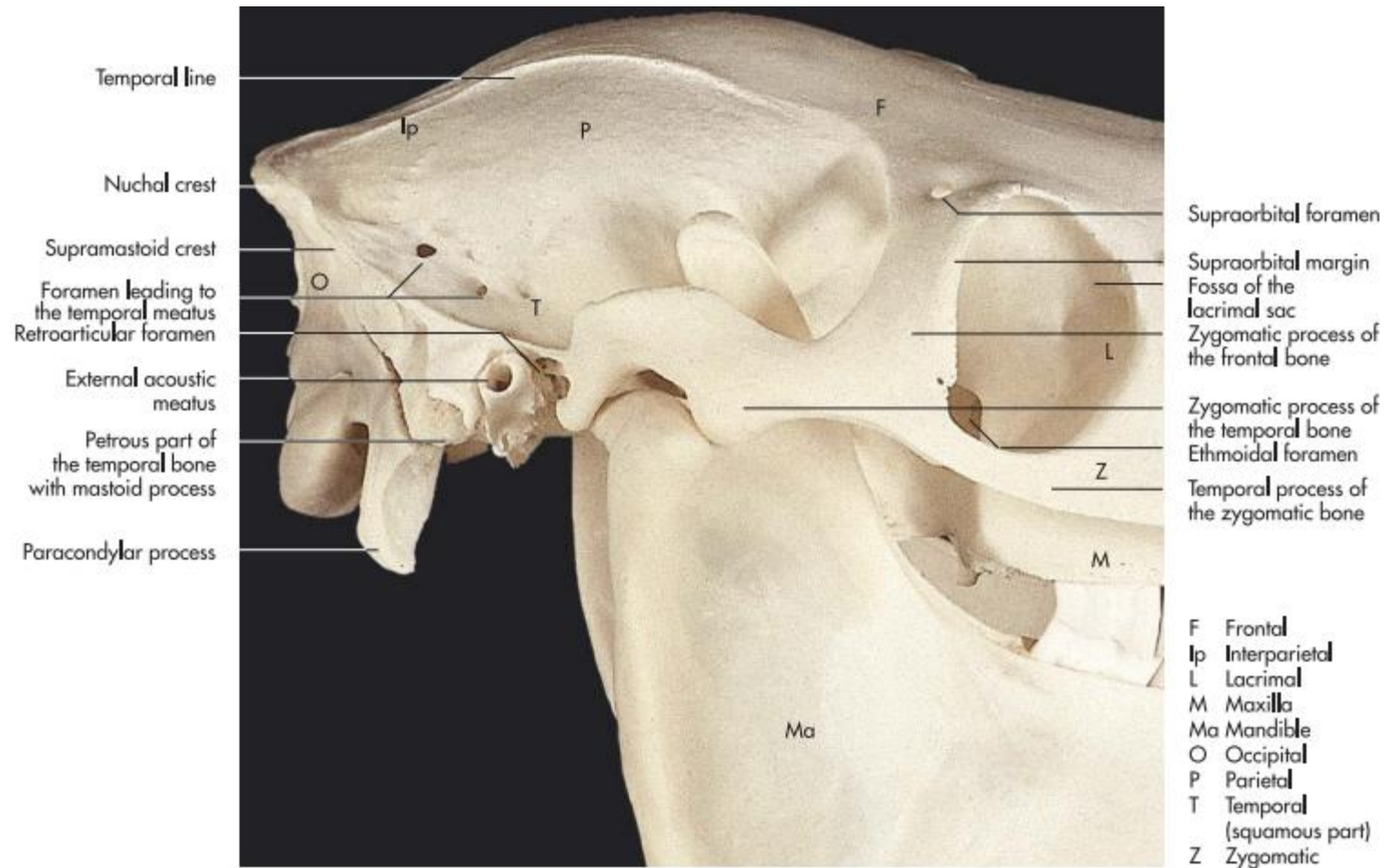


Fig. 2.9 Bones of the cranial part of an equine skull (lateral aspect).



Fig. 2.14 Bones of the cranial part of a bovine skull (ventral aspect).

- **Pars tympanica:**
 - **Porus acusticus externus**
 - **Meatus acusticus externus**
 - **Cavum tympani**
 - **Bulla tympanica**
 - **Processus muscularis**

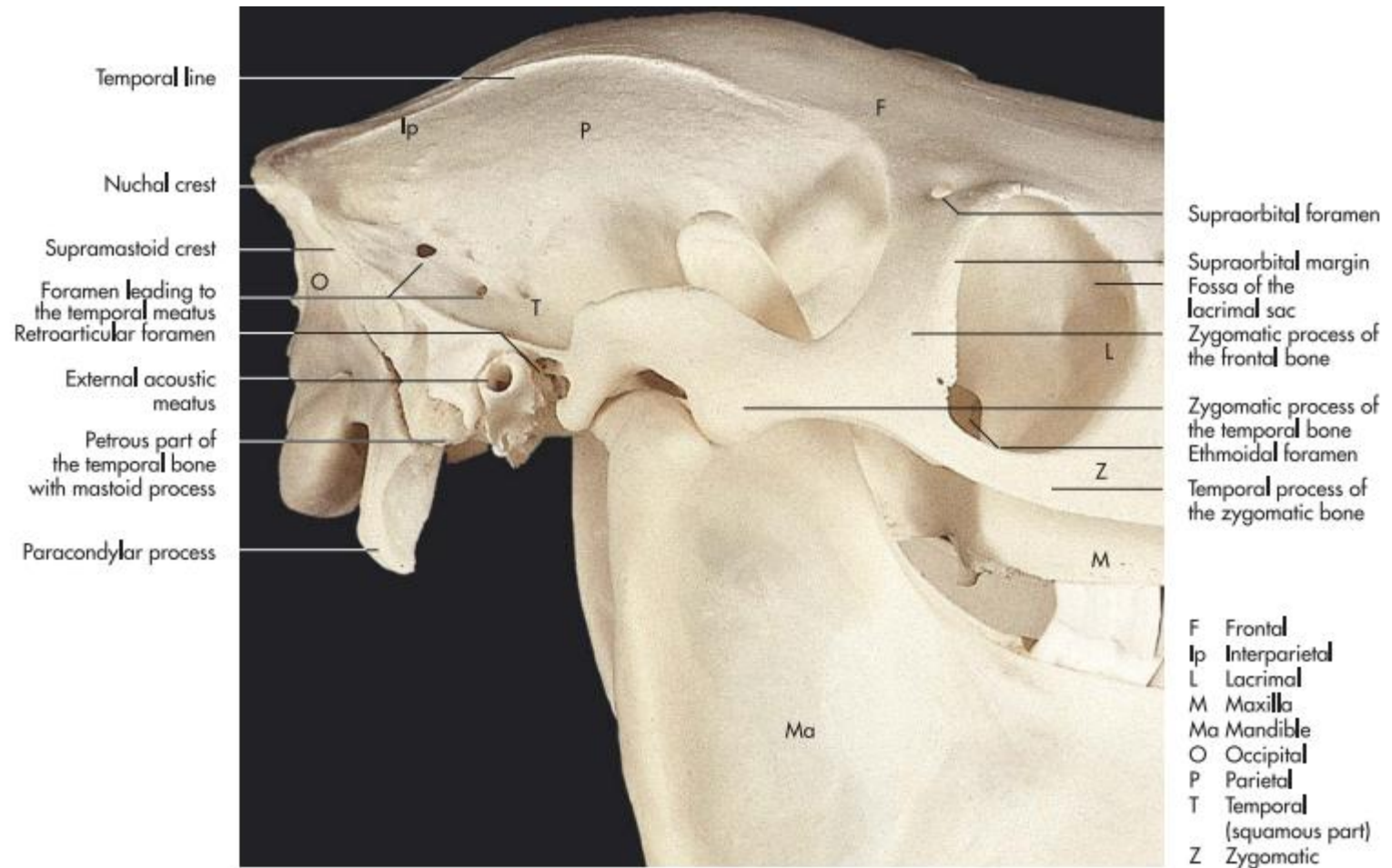


Fig. 2.9 Bones of the cranial part of an equine skull (lateral aspect).

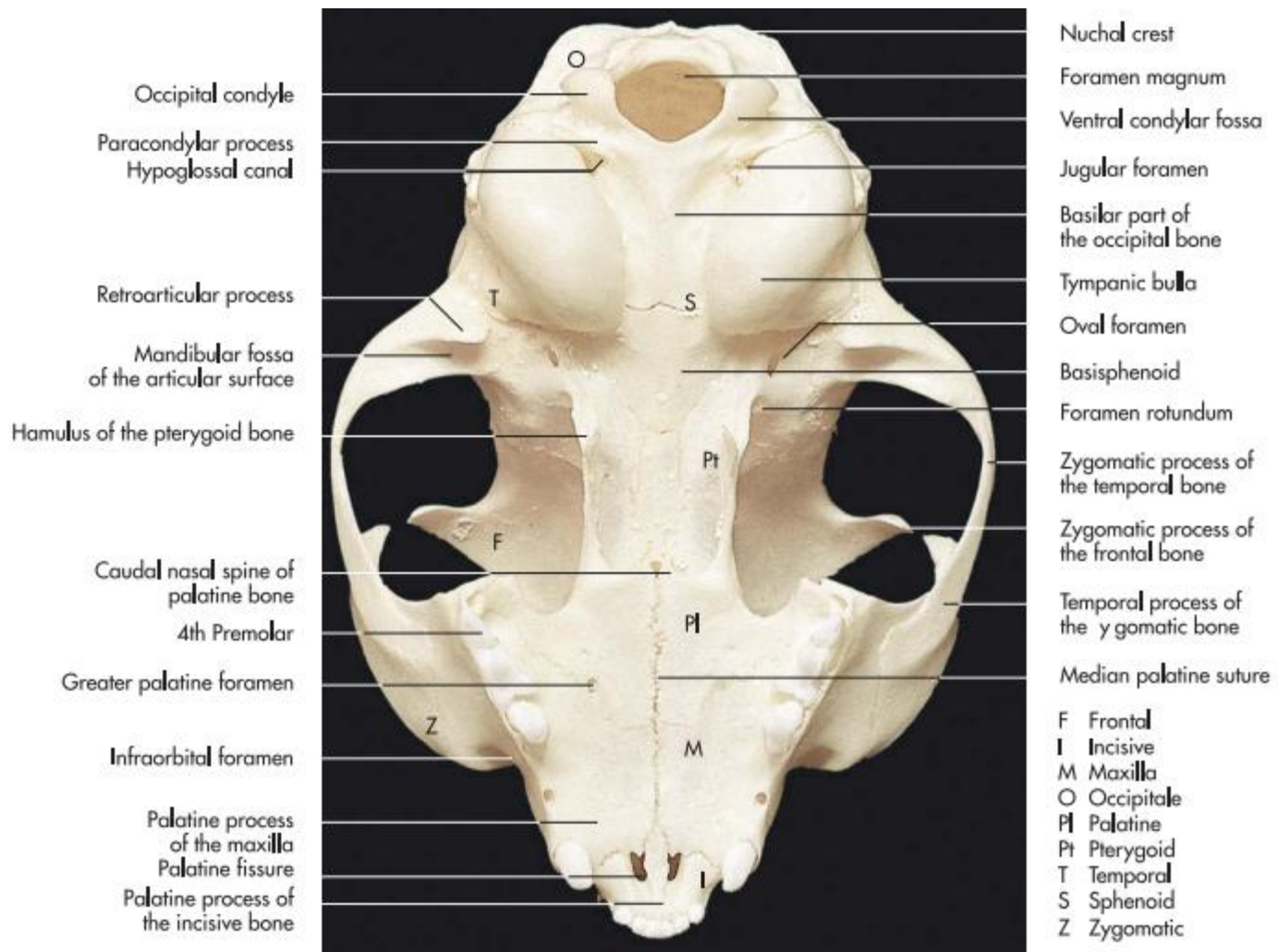


Fig. 2.19 Skull of a cat (ventral aspect).



Fig. 2.13 Bones of the cranial part of a bovine skull (medial aspect of sagittal section).