



UNIVERZITET U BEOGRADU
FAKULTET VETERINARSKЕ MEDICINE

MIŠIĆI LEĐA I SLABINA

Prof. dr Ivana Nešić



MIŠIĆI TRUPA (*MUSCULI TRUNCI*)

1. MIŠIĆI VRATA (*Mm. colli*)
2. MIŠIĆI LEĐA I SLABINA (*Mm. dorsi*)
3. MIŠIĆI REPA (*Mm. caudae s. coccygis*)
4. MIŠIĆI GRUDNOG KOŠA (*Mm. thoracis*)
5. MIŠIĆI TRBUŠNOG ZIDA (*Mm. abdominis*)



MIŠIĆI LEĐA I SLABINA

M. trapezius thoracis
M. latissimus dorsi
M. rhomboideus thoracis
M. serratus ventralis thoracis

MIŠIĆI SINSARKOZNE VEZE

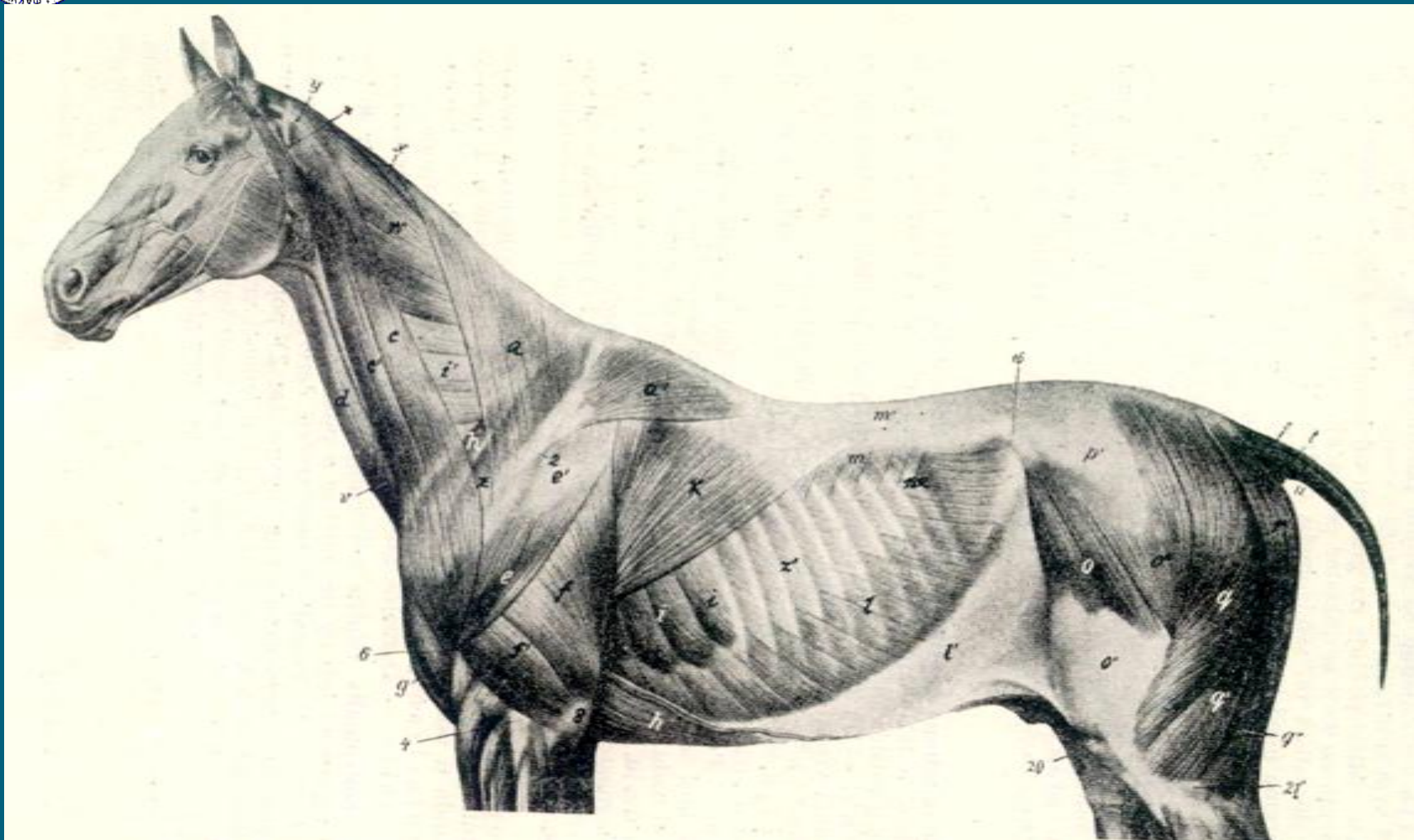
- *M. serratus dorsalis*
- *M. iliocostalis*
- *M. longissimus*
- *M. spinalis*
- *Mm. multifidi*

M. quadratus lumborum
M. psoas major
M. psoas minor

MIŠIĆI KARLIČNOG POJASA

Inervacija: spinalni nervi

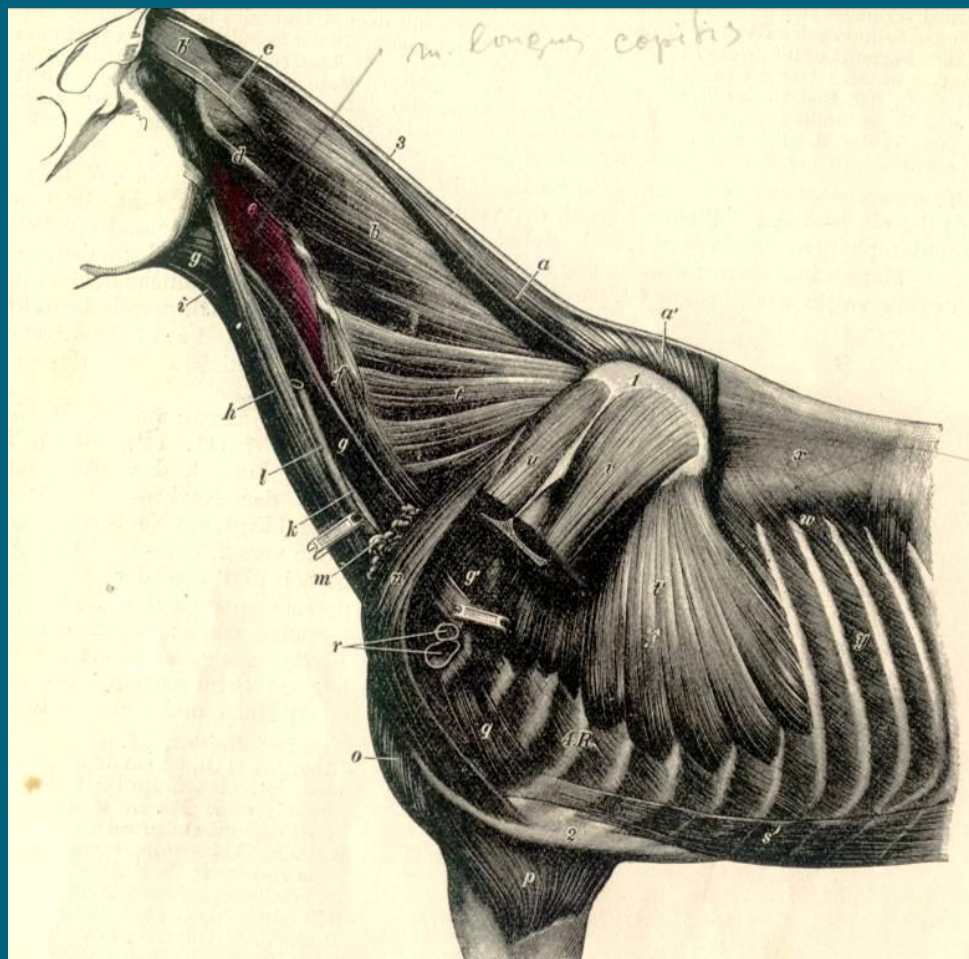
M. trapezius (pars thoracica) *M. latissimus dorsi*



Mišići u prvom sloju posle skidanja kože i površne fascije trupa



M. rhomboideus thoracis *M. serratus ventralis thoracis*



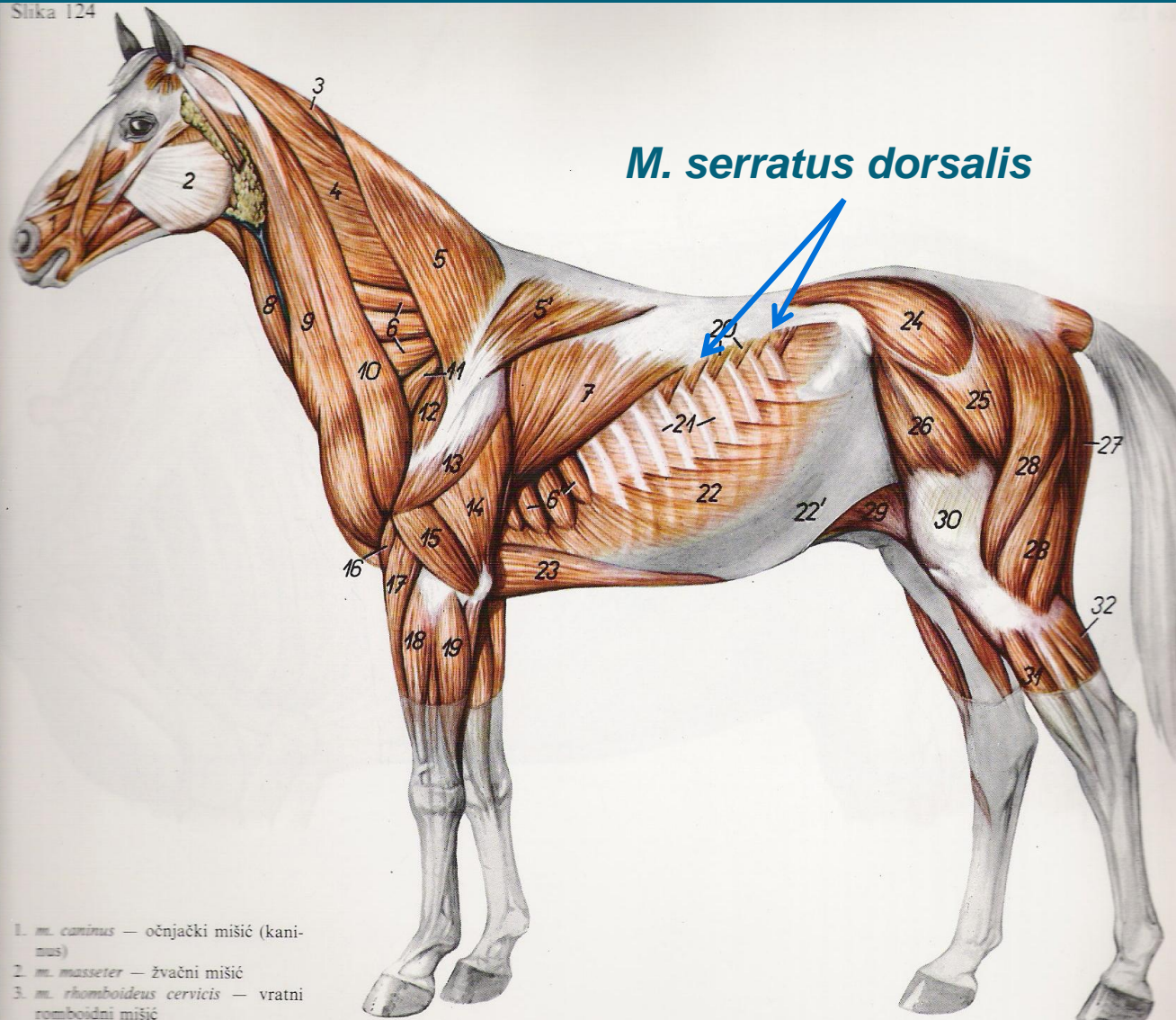
Mišići u drugom sloju posle skidanja *M. trapezius thoracis* i *M. latissimus dorsi*



1. M. serratus dorsalis

Dorzalni “zubasti” mišić

Slika 124



1. *m. caninus* — očnjački mišić (kaninus)
2. *m. masseter* — žvačni mišić
3. *m. rhomboideus cervicis* — vratni romboidni mišić



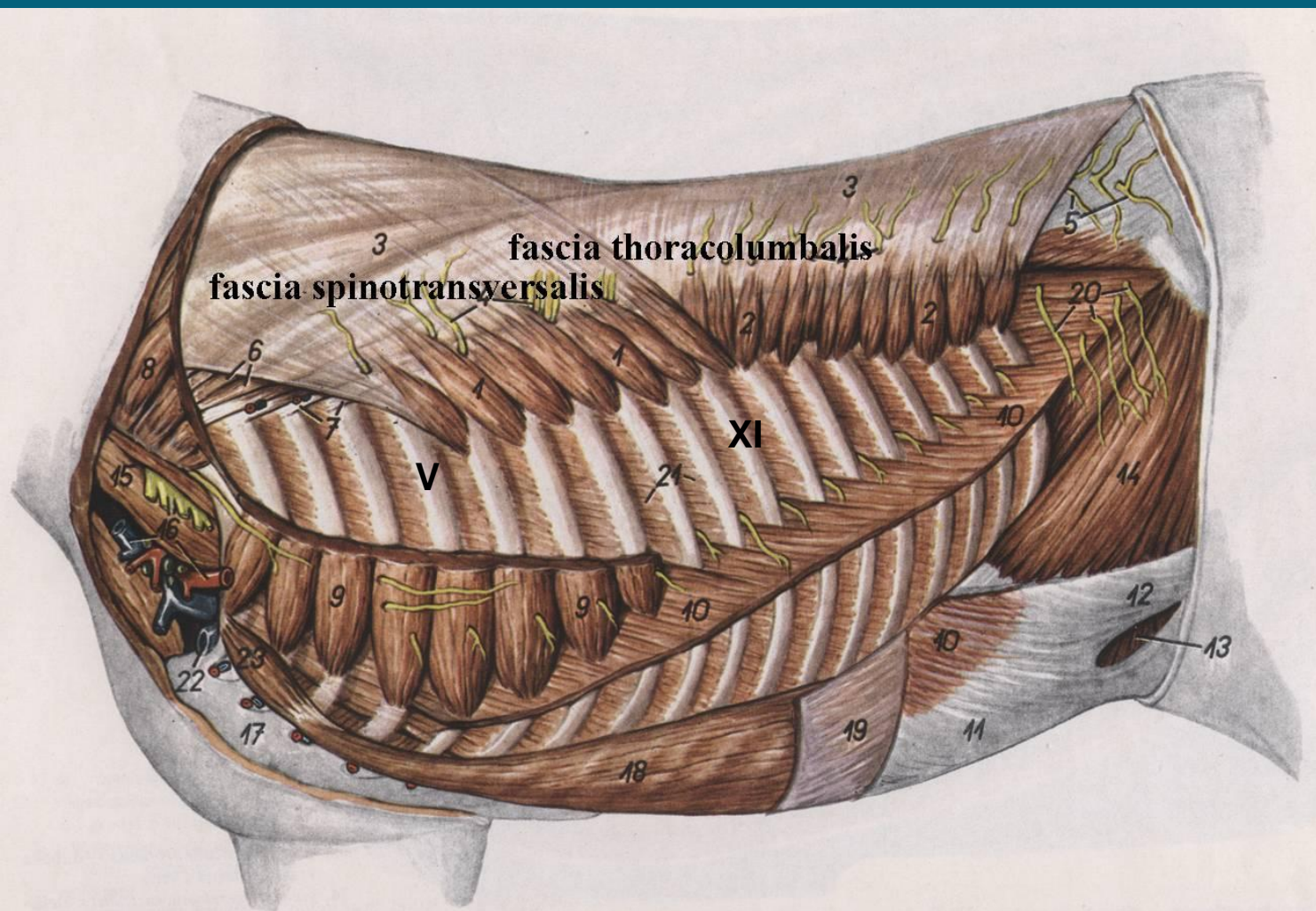
Ima 2 dela:

-M. serratus dorsalis cranialis

-M. serratus dorsalis caudalis

kranijalno

kaudalno

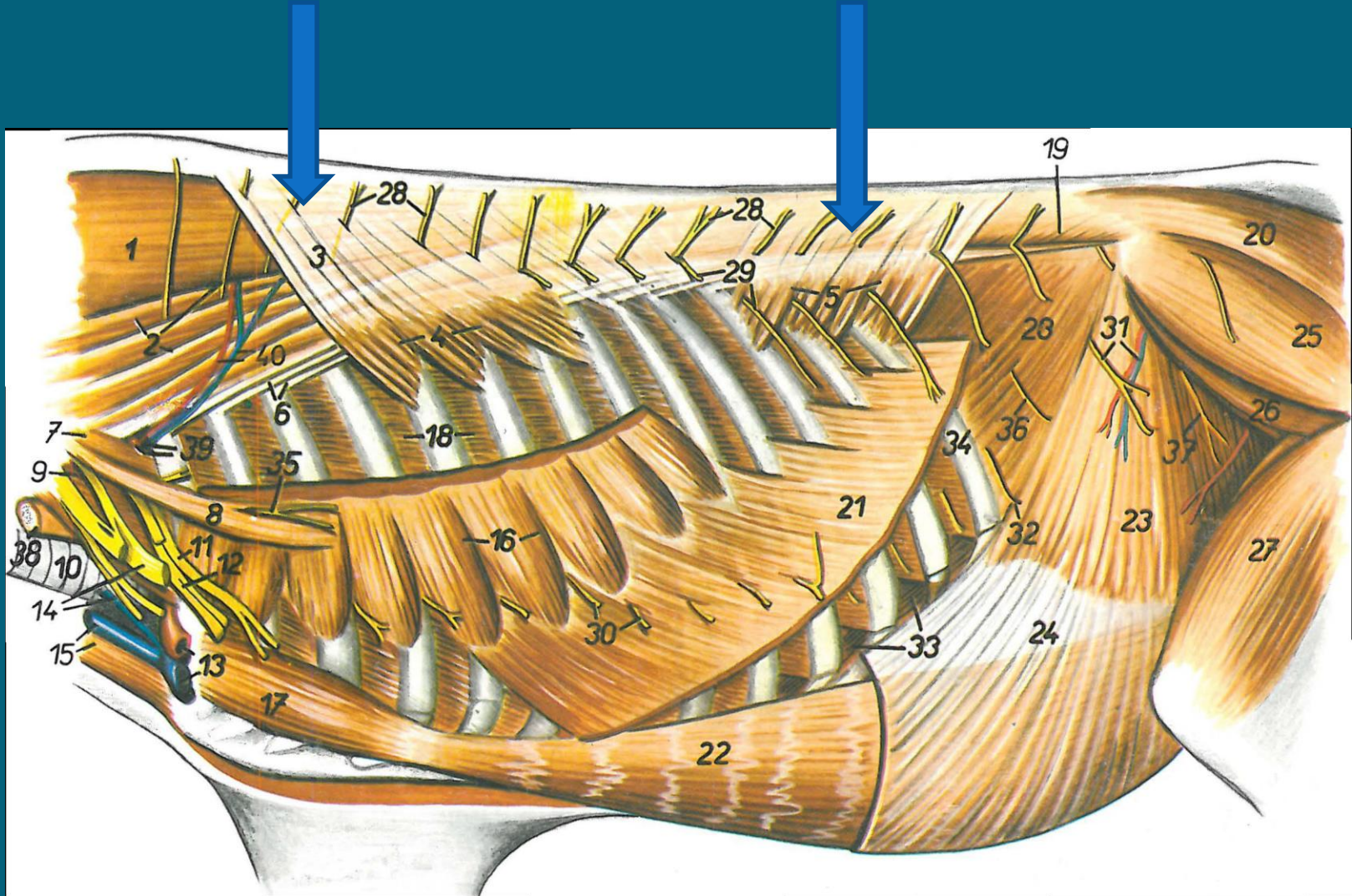


KONJ

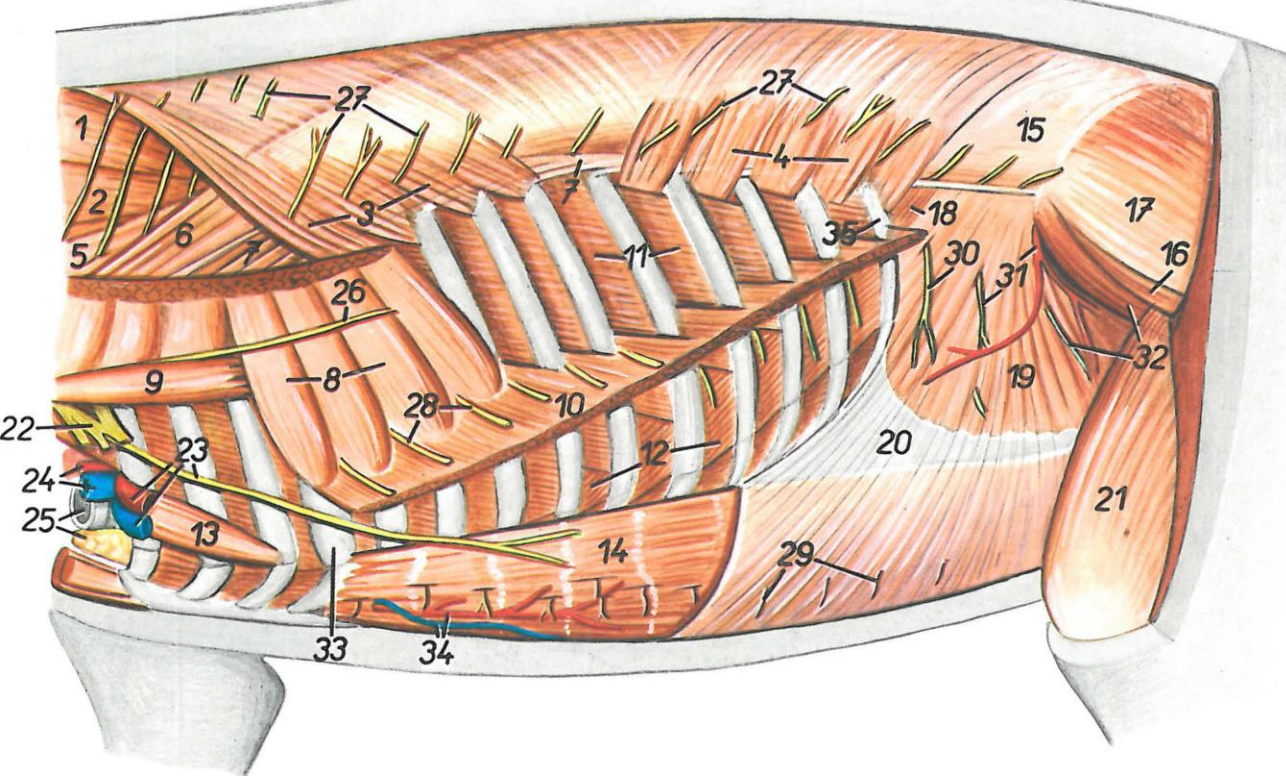
Sl. M. serratus dorsalis cranialis (1) et M. serratus dorsalis caudalis (2)

M. serratus dorsalis cranialis

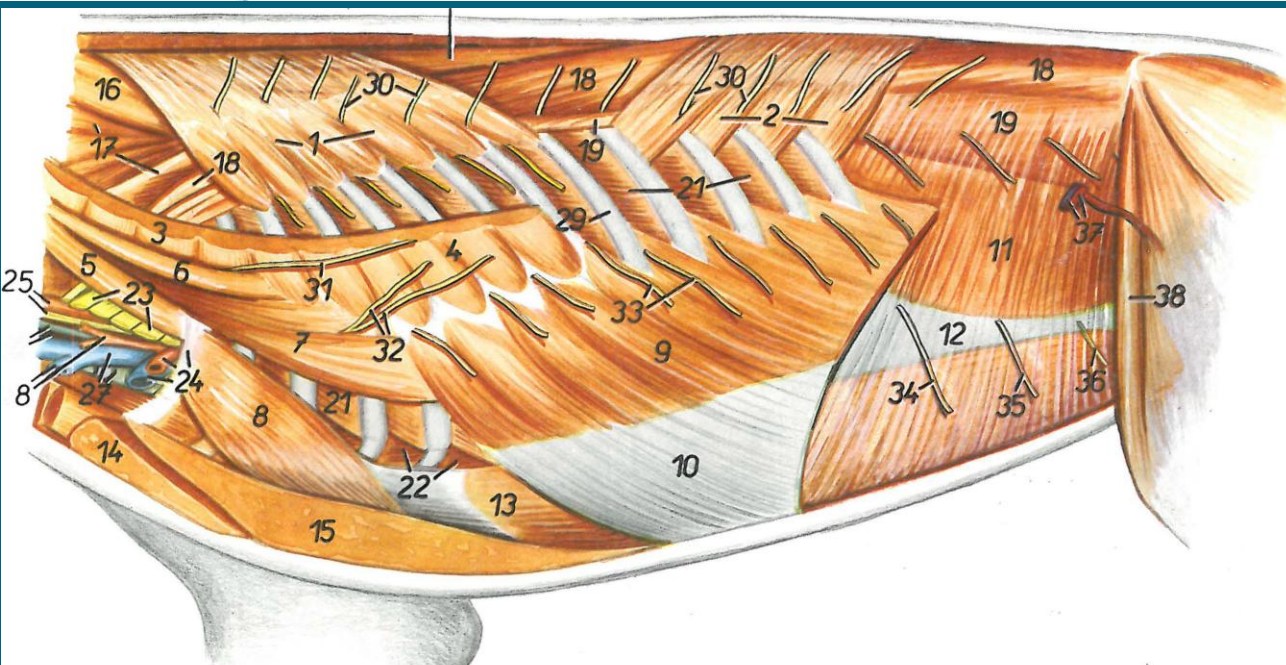
M. serratus dorsalis caudalis



GOVEČE



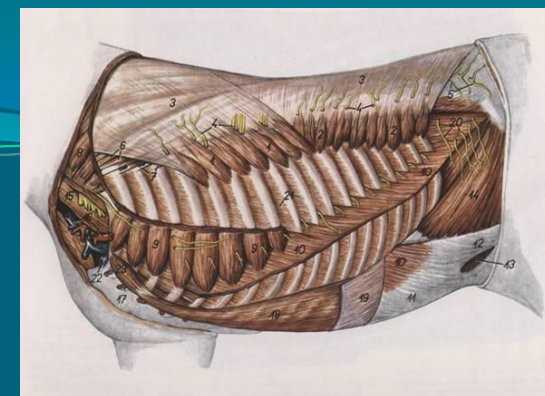
SVINJA



PAS



M. serratus dorsalis



tanak, pločast mišić, leži lateralno na dorzalnom zidu grudnog koša

1/ *M. serratus dorsalis cranialis*

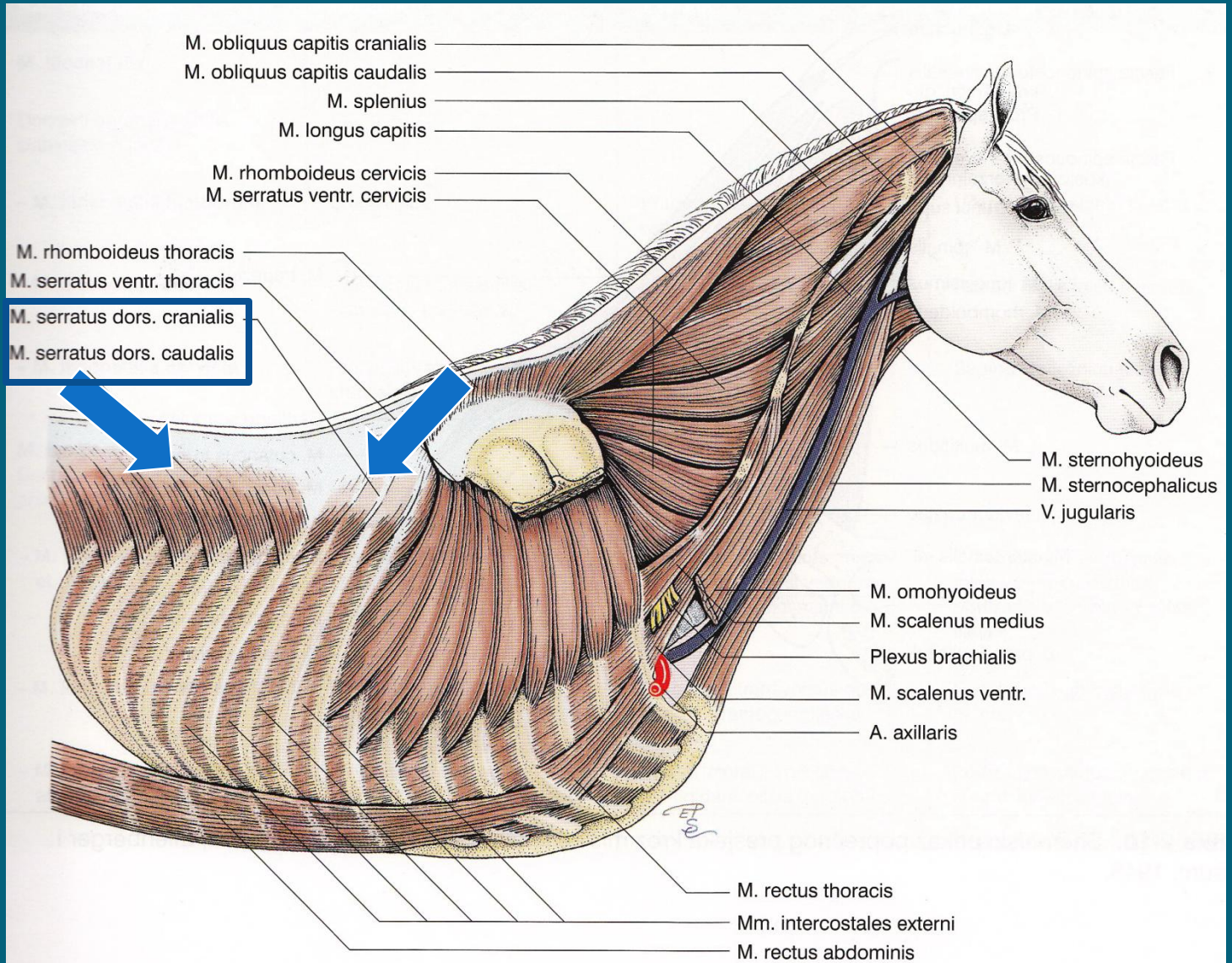
- počinje u *Fascia spinotransversalis* i vrhovima trnastih izdanaka leđnih pršljenova
- završava zubasto na kranijalnom rubu rebara: konj 5/6 -11/12
goveda 5-8

2/ *M. serratus dorsalis caudalis*

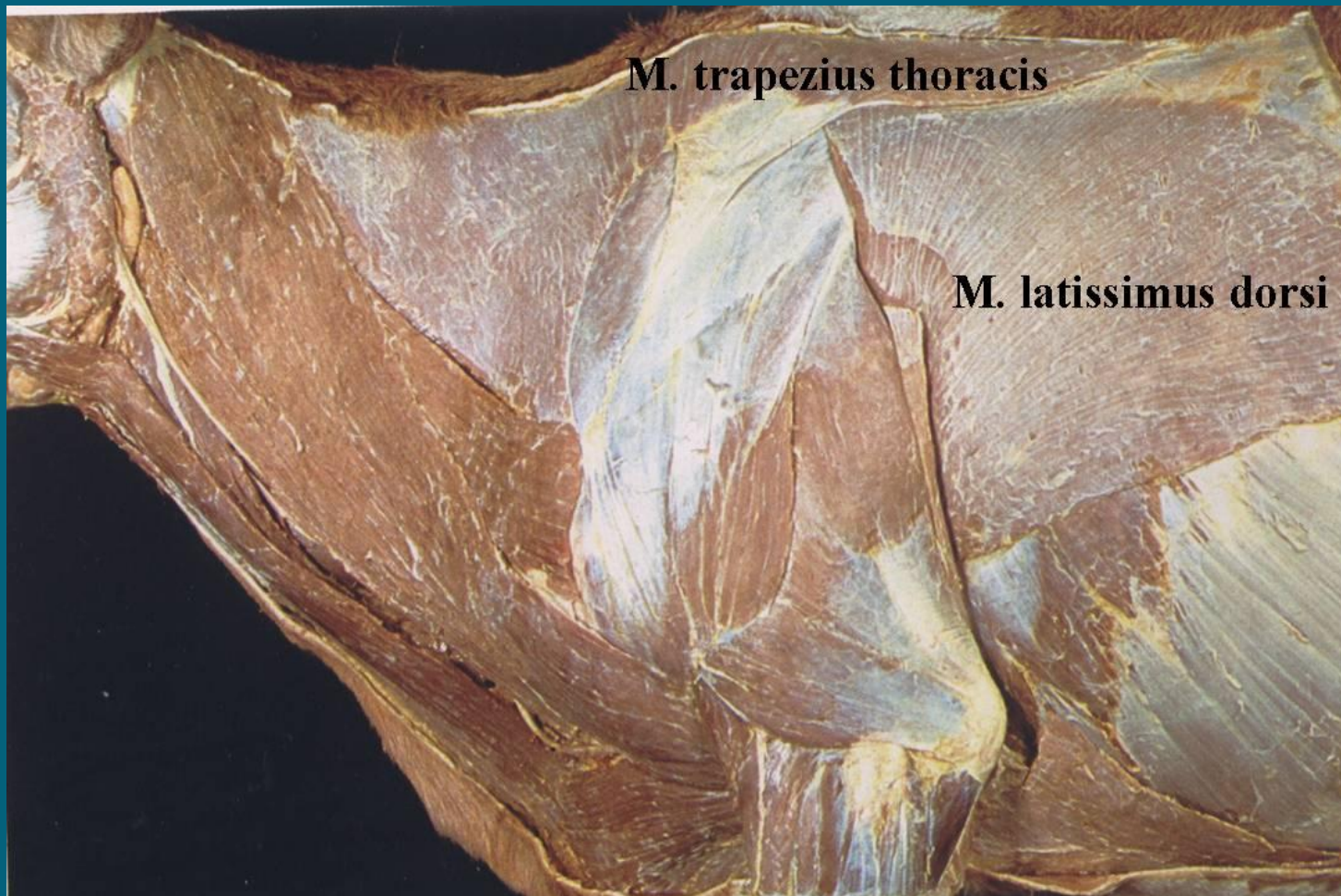
- počinje u *Fascia thoracolumbalis* i vrhovima trnastih izdanaka slabinskih pršljenova
- završava zubasto na kaudalnom rubu rebara: konj 11-18
goveda 10-13

Funkcija: *M. serratus dorsalis cranialis* – pri udisaju
M. serratus dorsalis caudalis – pri izdisaju

Inervacija: spinalni nervi – *Nn. intercostales*







Mišići u prvom sloju posle skidanja kože i površne fascije trupa (goveče)



kranijalno

kaudalno

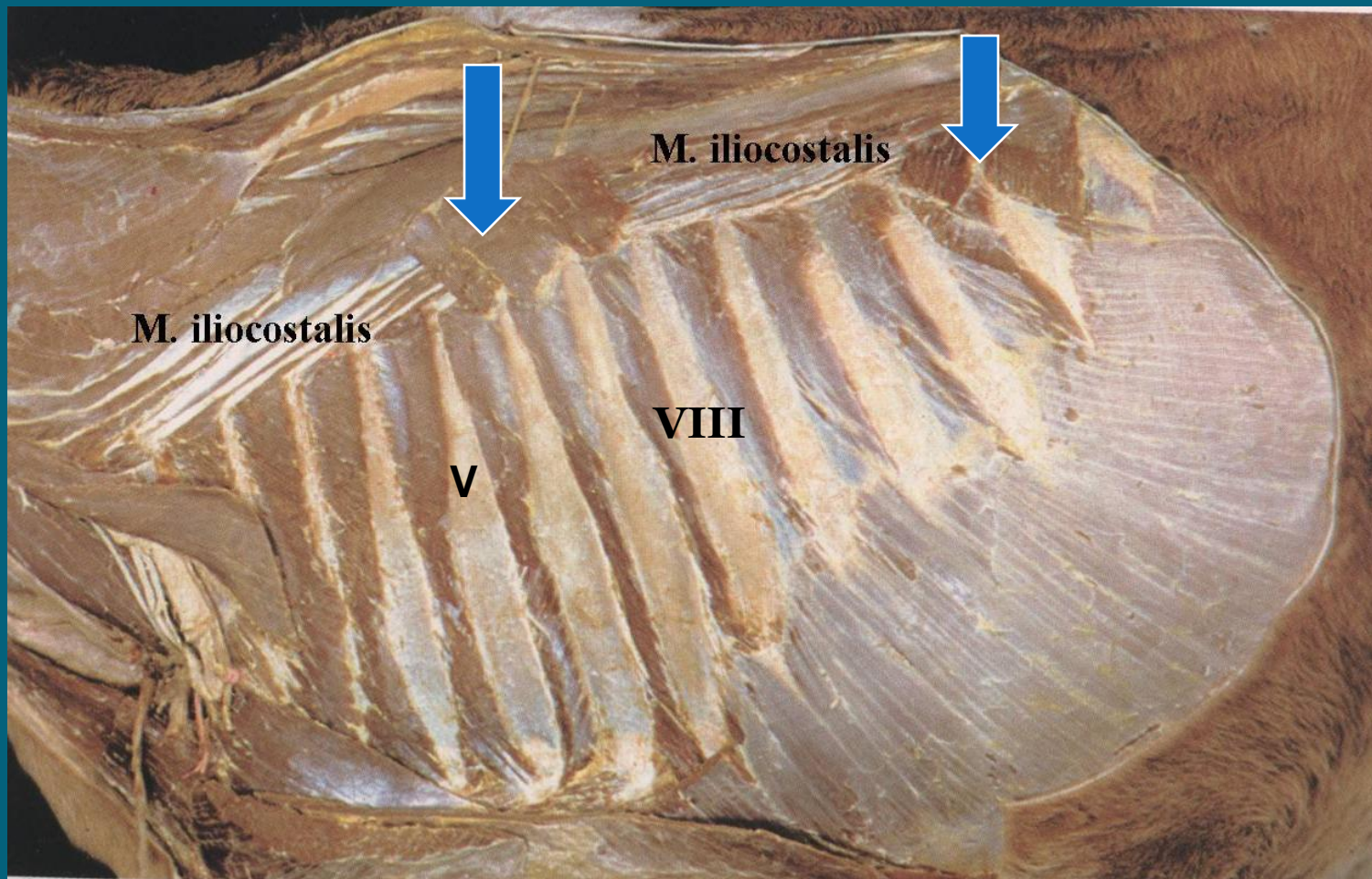
M. serratus ventralis

**Mišići u drugom sloju posle skidanja prednjeg ekstremiteta i uklanjanja
M. trapezius thoracis i *M. latissimus dorsi*
(goveče)**



M. serratus dorsalis cranialis

M. serratus dorsalis caudalis



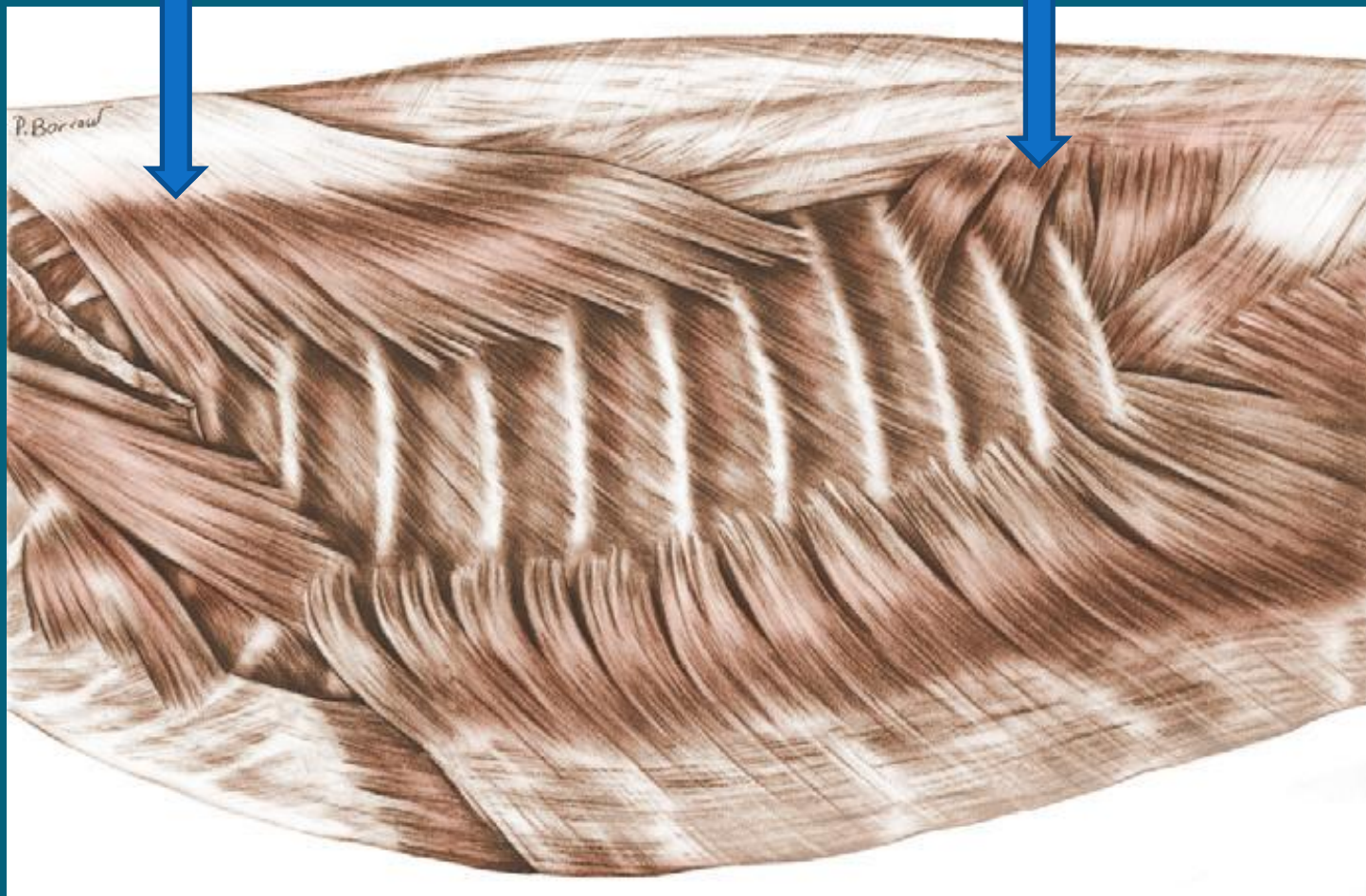
kranijalno

kaudalno

Mišići u sloju posle skidanja prednjeg ekstremiteta i uklanjanja: *M. trapezius thoracis*, *M. latissimus dorsi* i *M. serratus ventralis*-a (goveče)

M. serratus dorsalis cranialis

M. serratus dorsalis caudalis



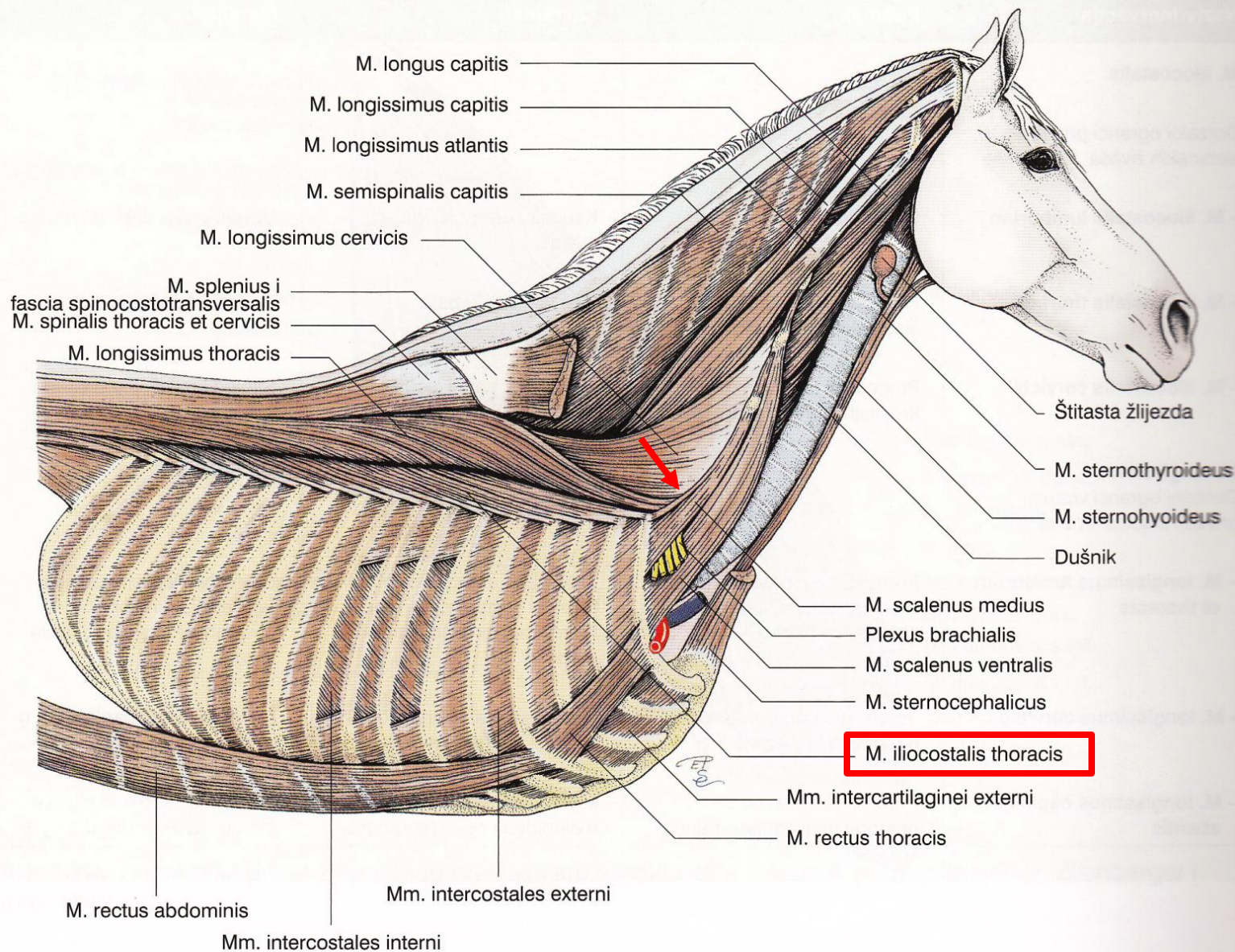
kranijalno

kaudalno

PAS



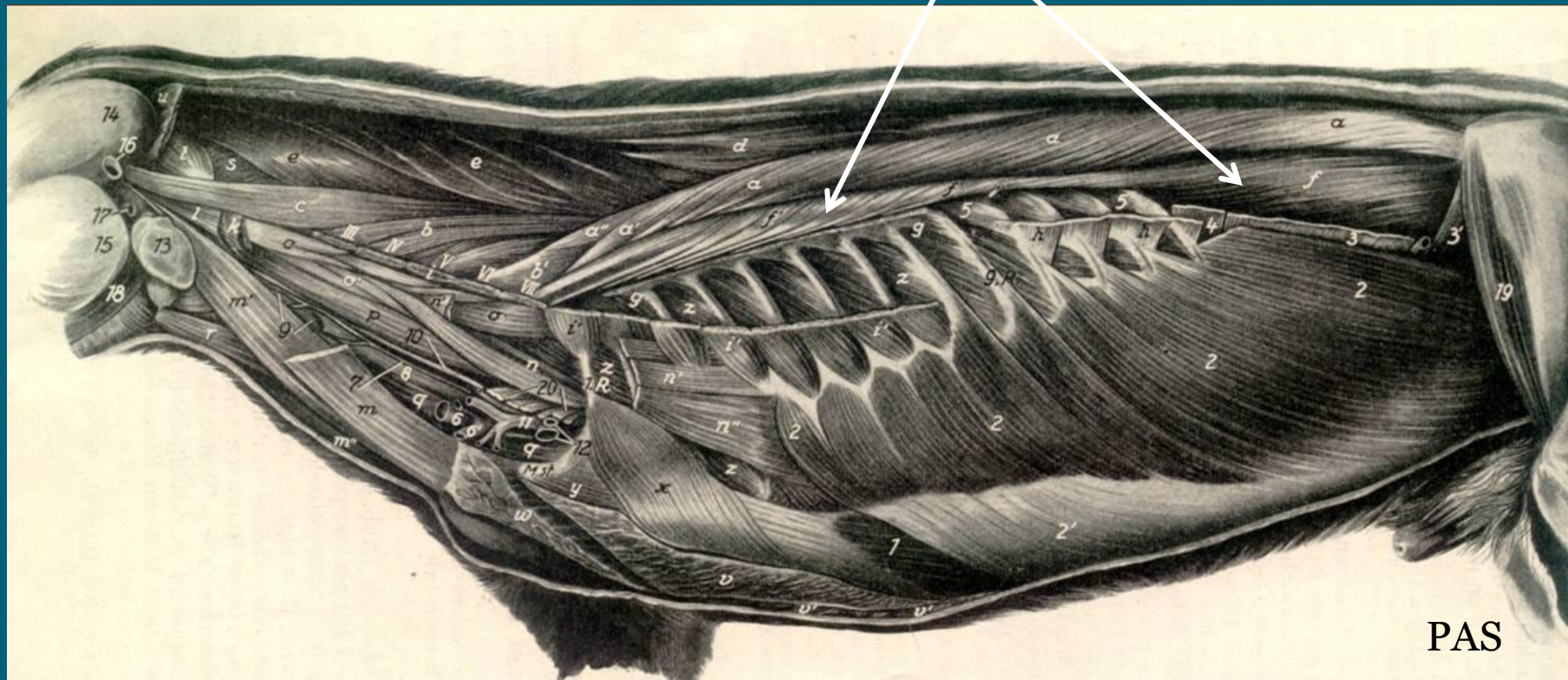
2. M. iliocostalis



- dug, uzan, pljosnat mišić **protkan tetivnim vlaknima**
- pruža se od **Crista iliaca** (karlične kosti) do vratnih pršljenova



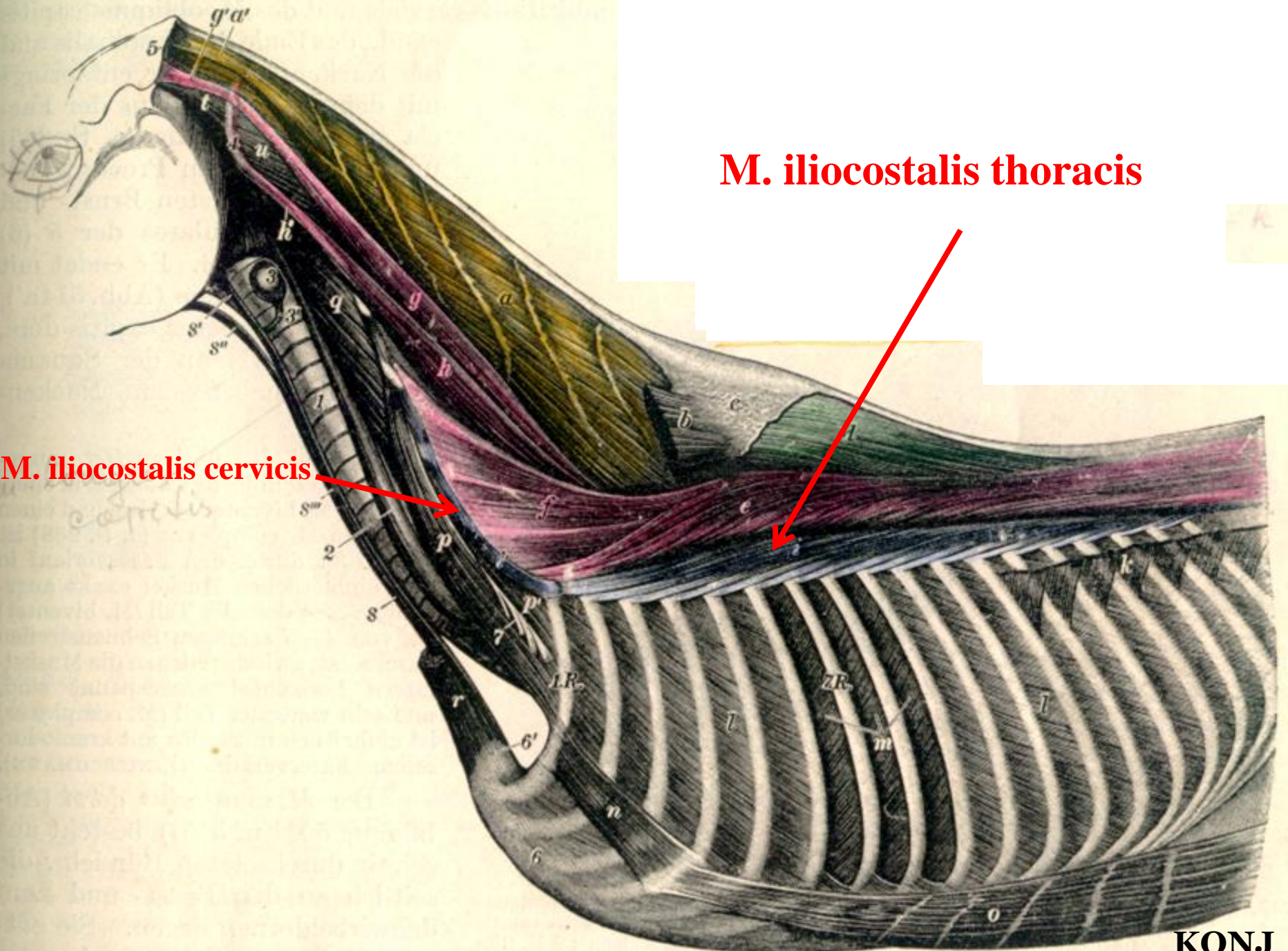
M. iliocostalis

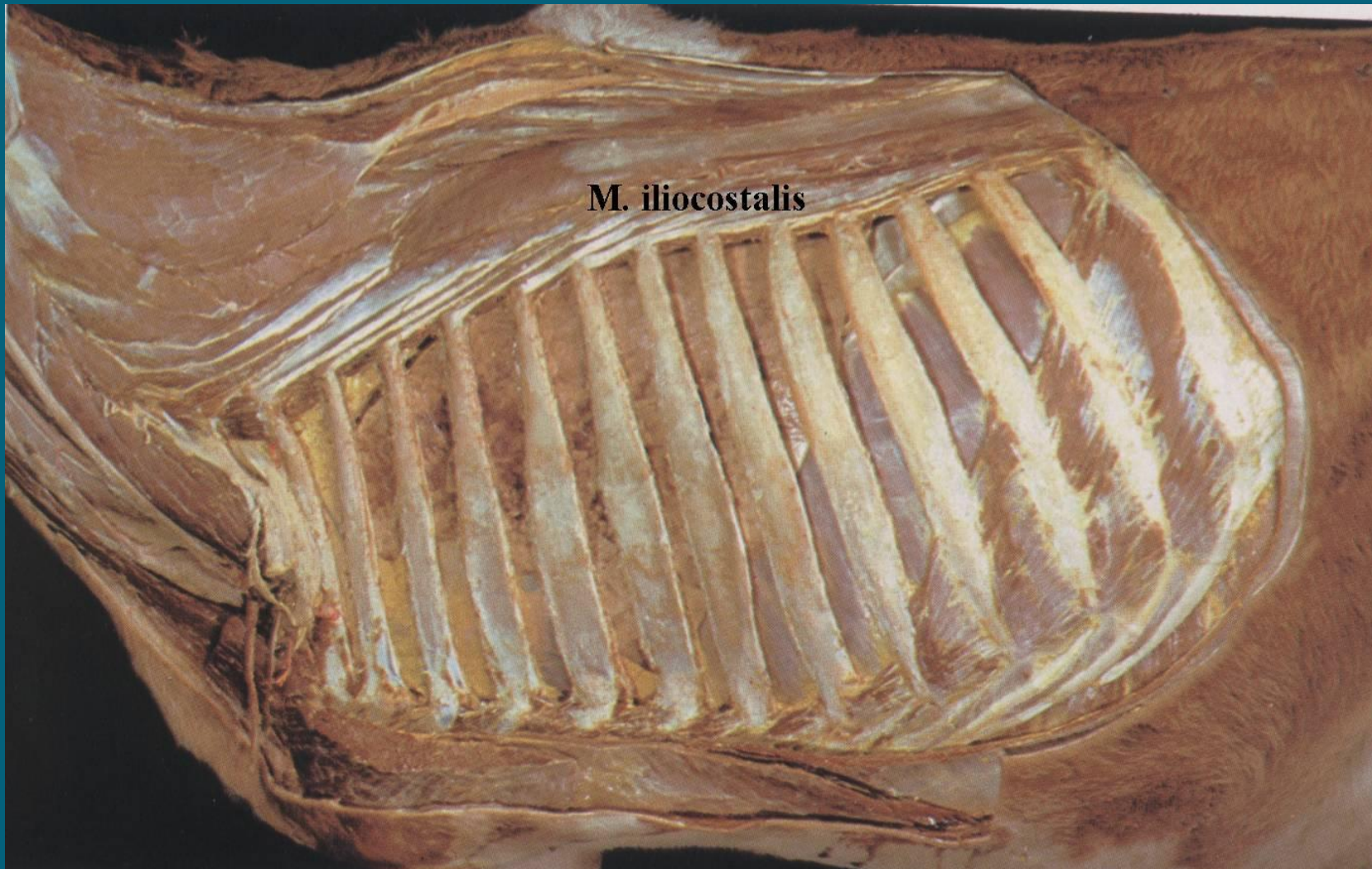


1. *M. iliocostalis lumborum* - slabinski deo
2. *M. iliocostalis thoracis* - grudni deo
3. *M. iliocostalis cervicis* - vratni deo

M. iliocostalis thoracis

M. iliocostalis cervicis







M. iliocostalis

Slabinski deo (pars lumborum) – *M. iliocostalis lumborum*

Leđni deo (pars thoracis) – *M. ilicostalis thoracis*

Vratni deo (pars cervicis) – *M. ilicostalis cervicis*

Funkcija: 1/ učvršćuje slabinski i torakalni deo kičmenog suba
2/ pri jednostranom delovanju savija kičmeni stub u stranu
3/ vuče rebra kaudalno (**pomaže u izdisaju**)

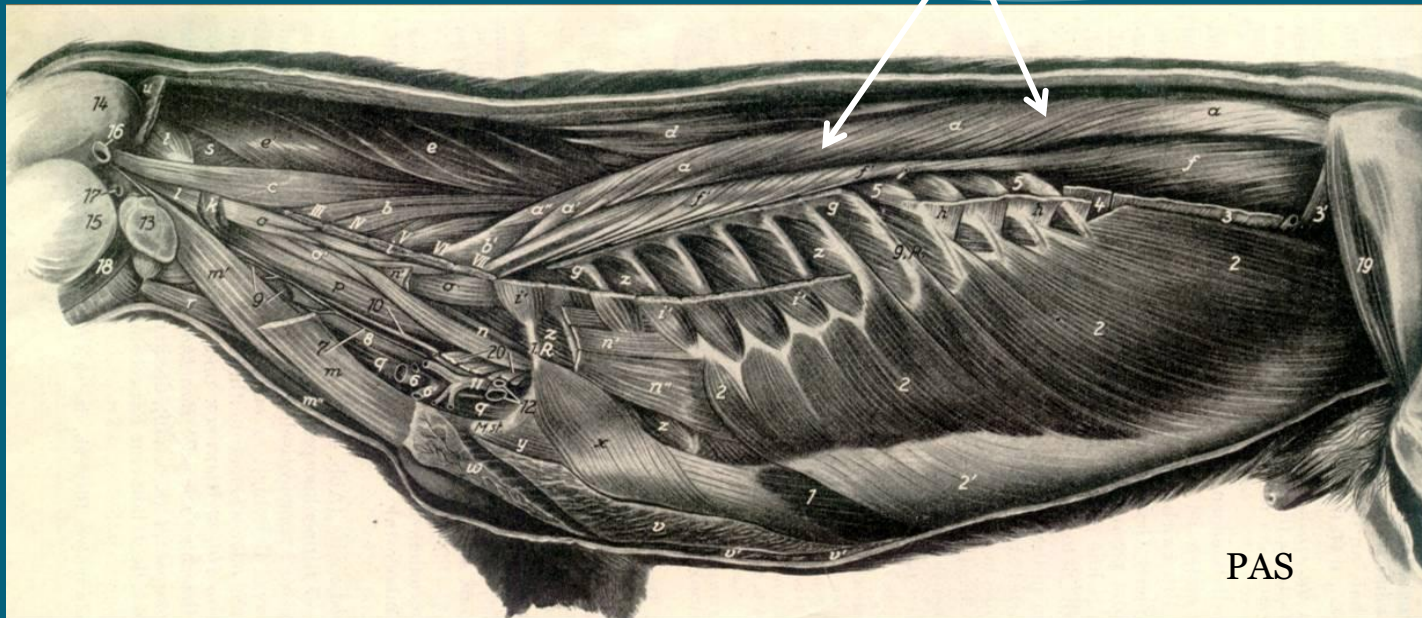
Inervacija: spinalni nervi – *Nn. thoracales et lumbales (Rami dorsales)*



3. M. longissimus



M. longissimus



- najduži mišić tela, najjači ekstenzor leđnog i slabinskog dela kičme
- od krsne i karlične kosti do vrata/glave - prihvatajući se za transverzalne izdanke
- iznad M. Iliocostalis - a
- M. longissimus lumborum* (najbolje razvijeni deo, leži ispod torakolumbalne fascije)
počinje na:
 - trnastim izdancima krsnih i lumbalnih pršljenova
 - os coxae (*Crista iliaca, Tuber coxae*, ventralna površina krila *Os ilium*)



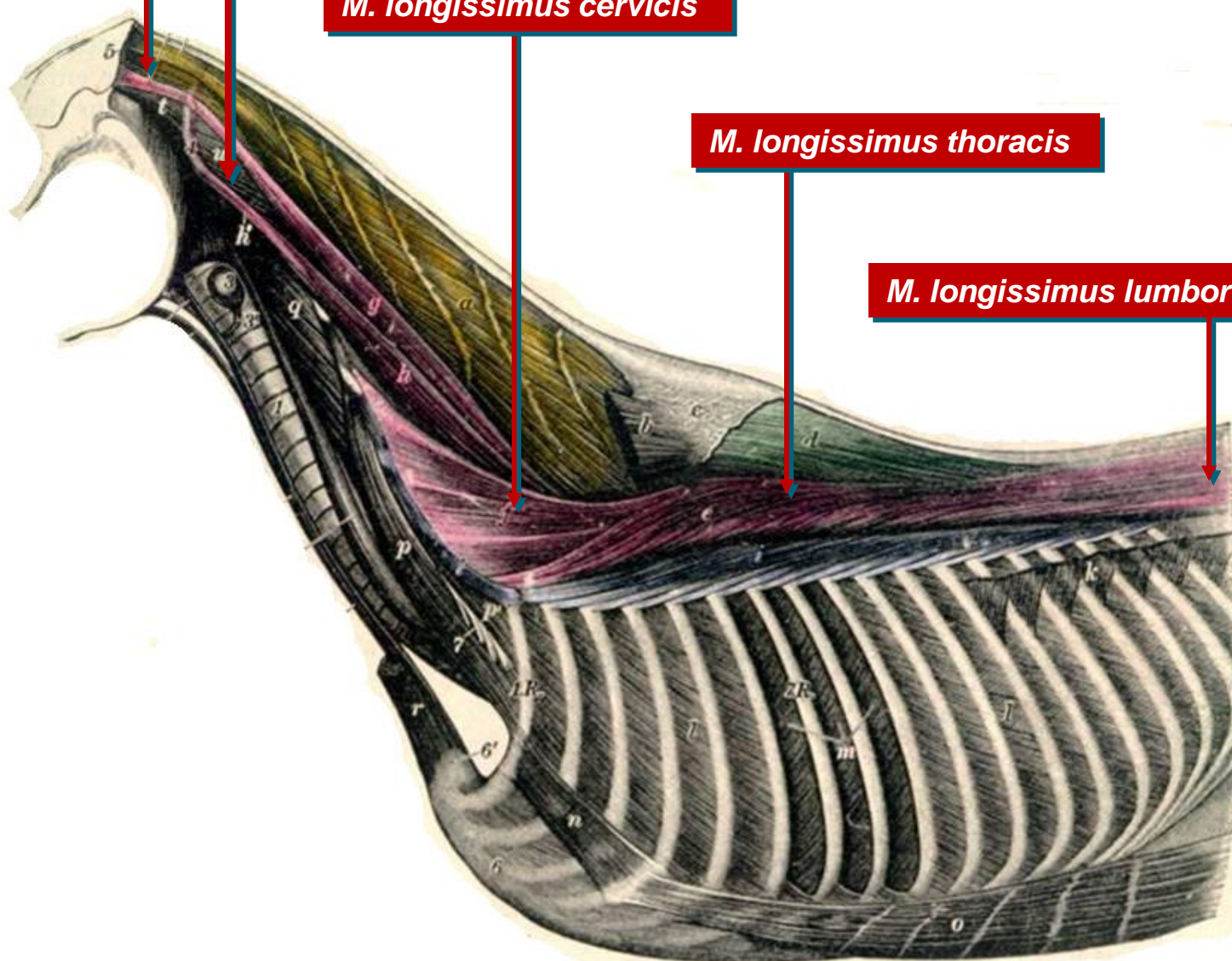
M. longissimus capitis

M. longissimus atlantis

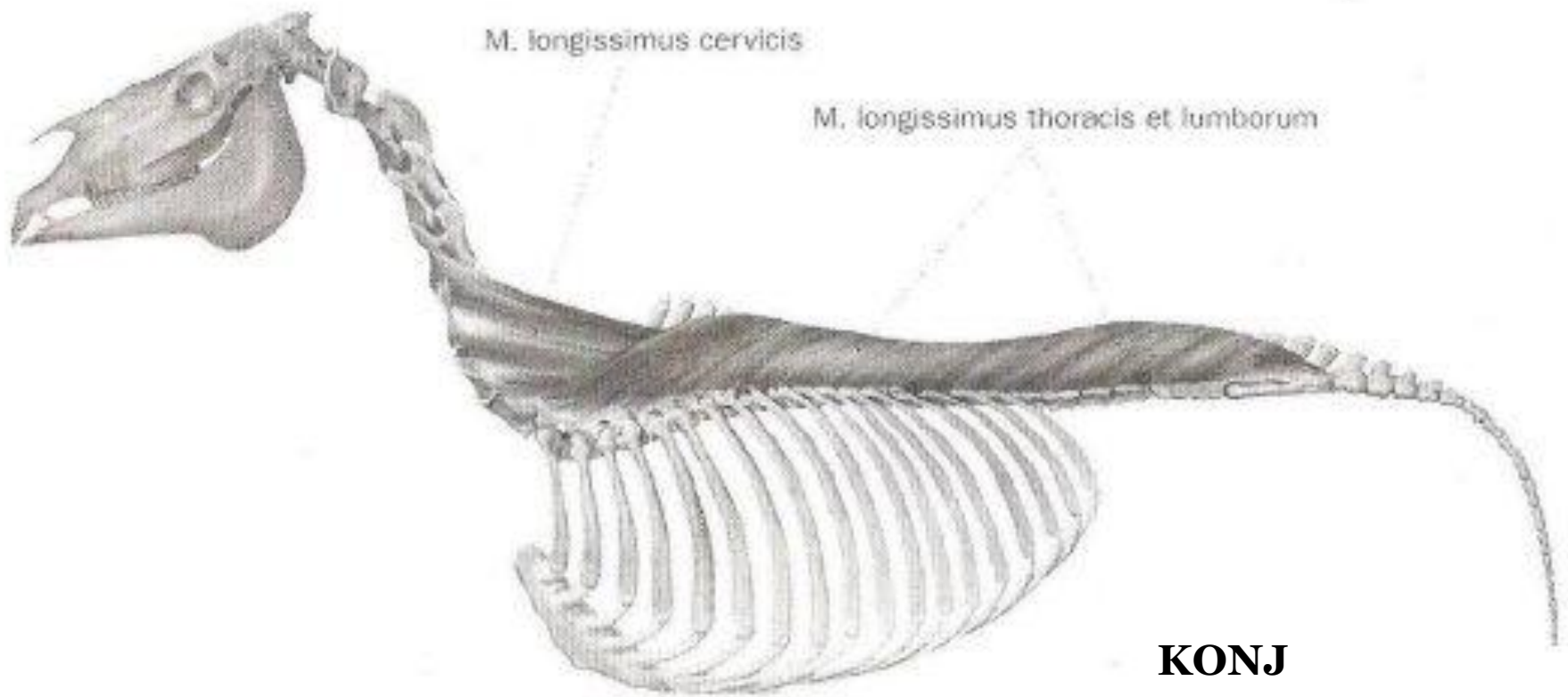
M. longissimus cervicis

M. longissimus thoracis

M. longissimus lumborum



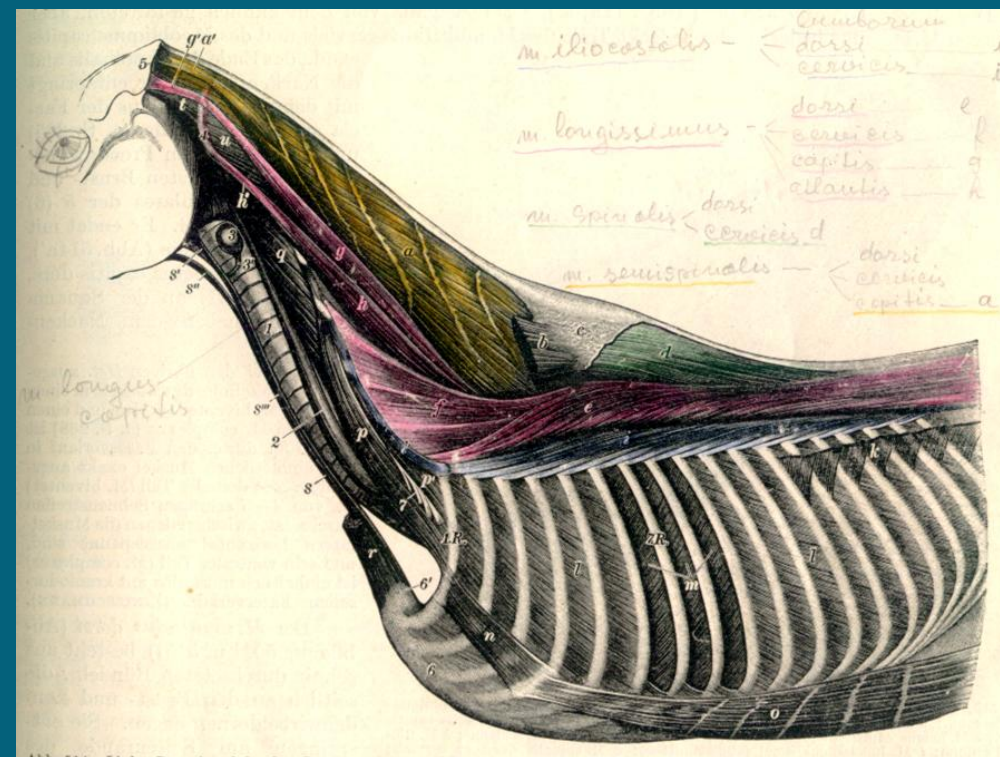
M. longissimus





KONJ

- 1 M. obliquus capitis caudalis
- 2 Cut edge of M. longissimus capitis
- 3 M. longissimus atlantis
- 4 M. semispinalis capitis
- 5 Nuchal ligament, funicular part
- 6 M. longissimus cervicis
- 7 M. longissimus thoracis
- 8 M. spinalis thoracis
- 9 M. iliocostalis thoracis
- 10 M. obliquus externus abdominis
- 11 M. intercostales externi
- 12 M. sternohyoideus and M. sternothyroideus
- 13 Trachea



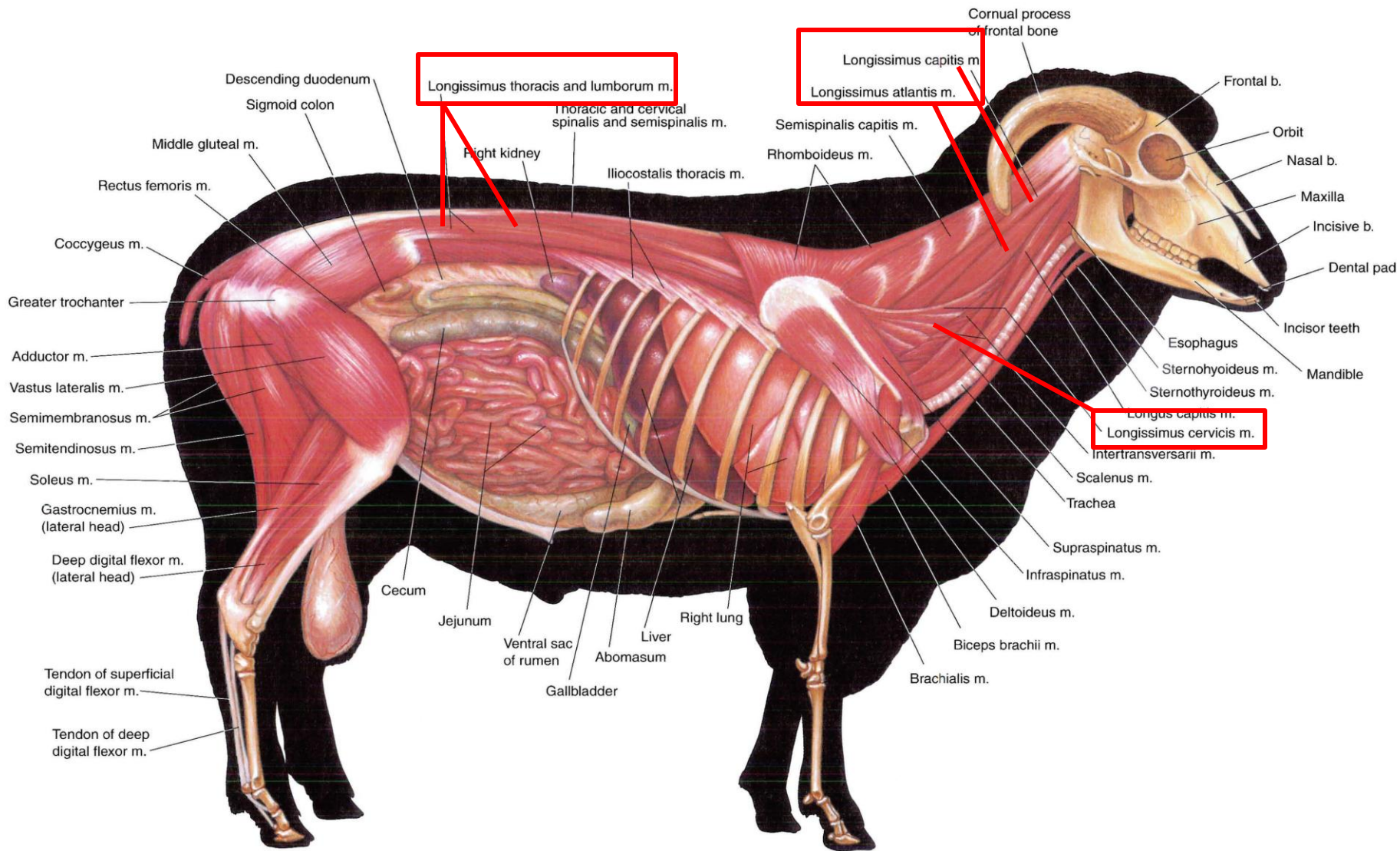
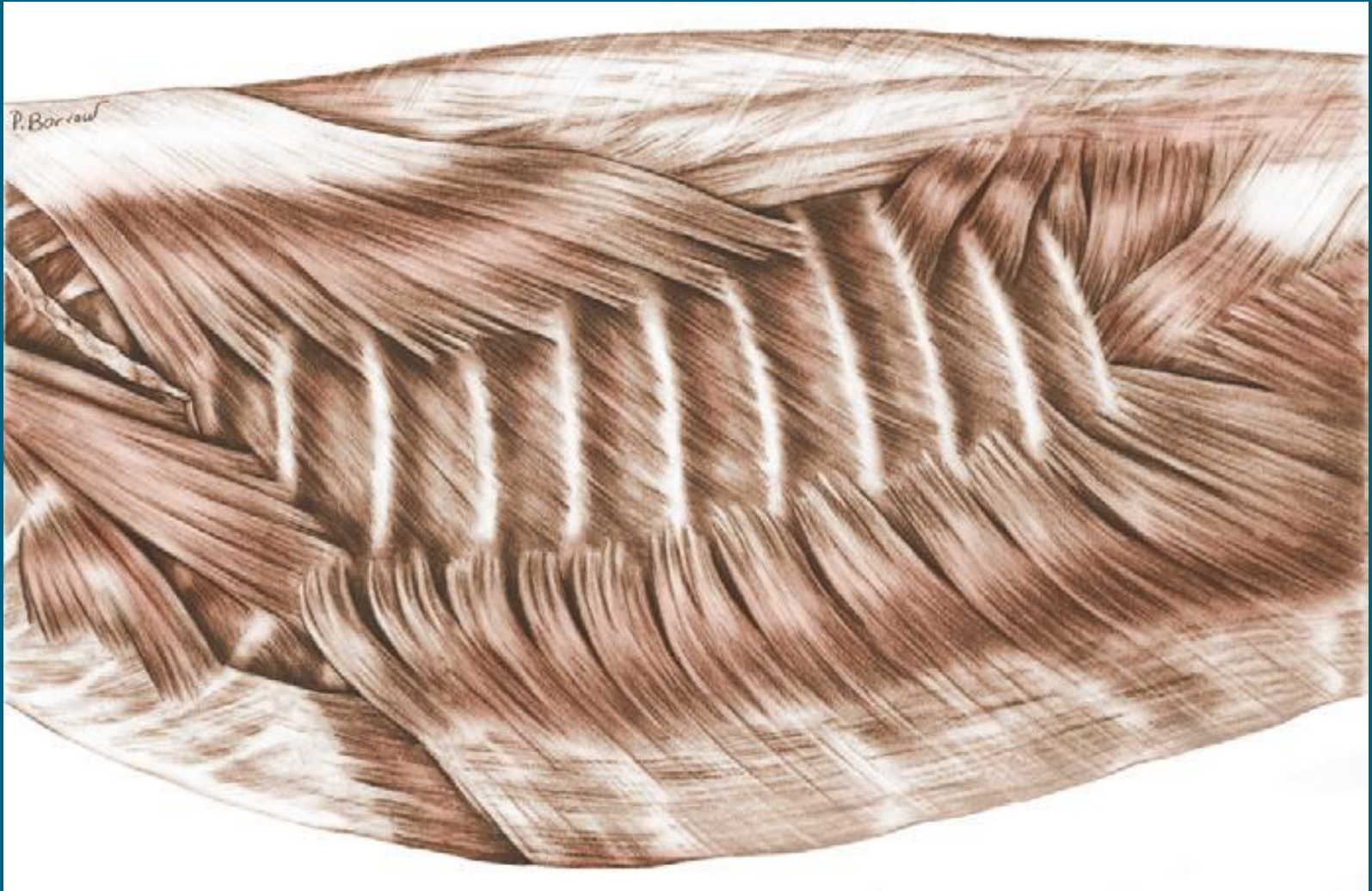


PLATE 3.7 Deep cervical muscles and *in situ* viscera of the ram. Omentum removed.
 Right lateral view. m = muscle, b = bone



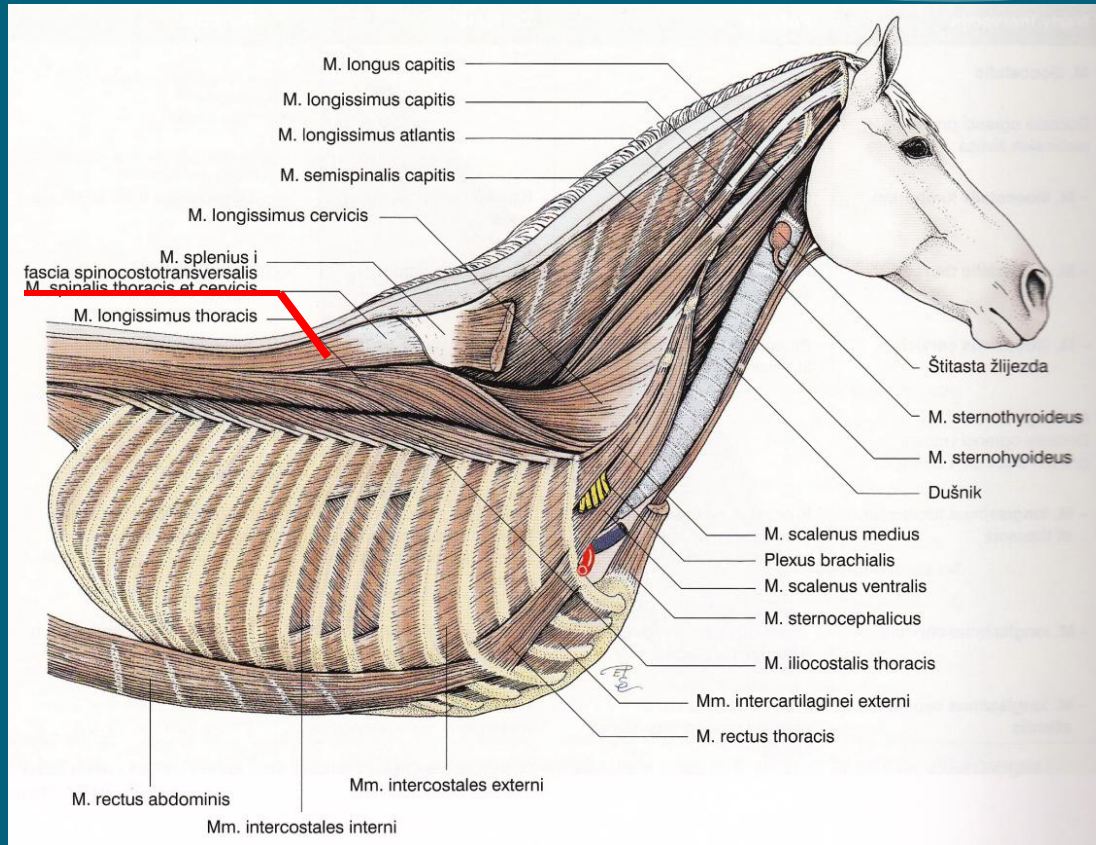
PAS



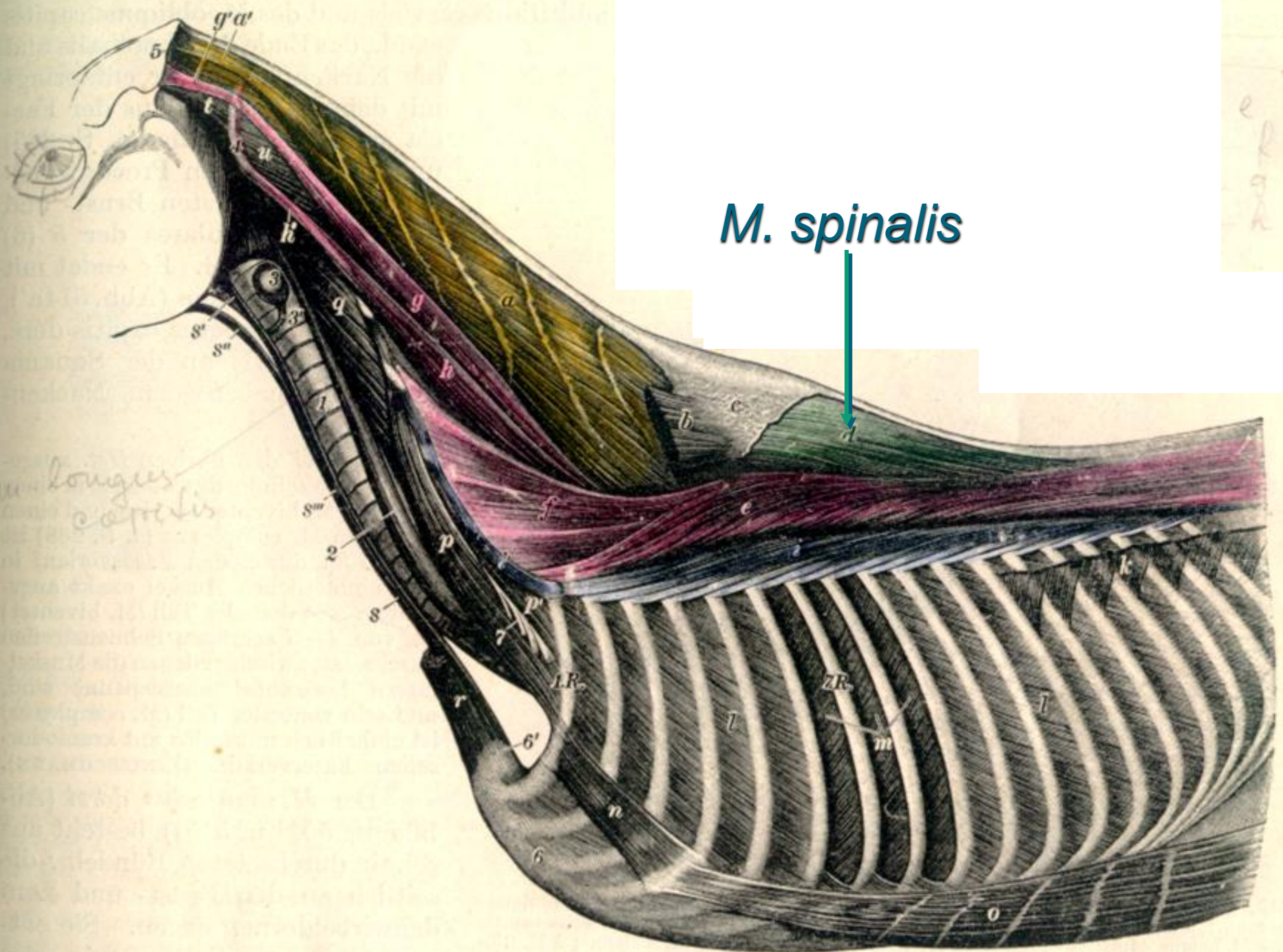
4. M. spinalis



M. spinalis (thoracis et cervicis)



- počinje najdorzalnije na kičmenom stubu u slabinskom i leđnom delu
 - prihvata se tetivasto za vrhove spinalnih izdanaka
 - na ventralnoj strani formira žleb u kojem se nalazi *M. longissimus*
 - završava: na trnastim izdancima poslednjih vratnih pršljenova
 - učvršćuje leđni deo kičme i podiže vrat
- Inervacija: spinalni nervi – *Nn. cervicales, thoracales et lumbales*

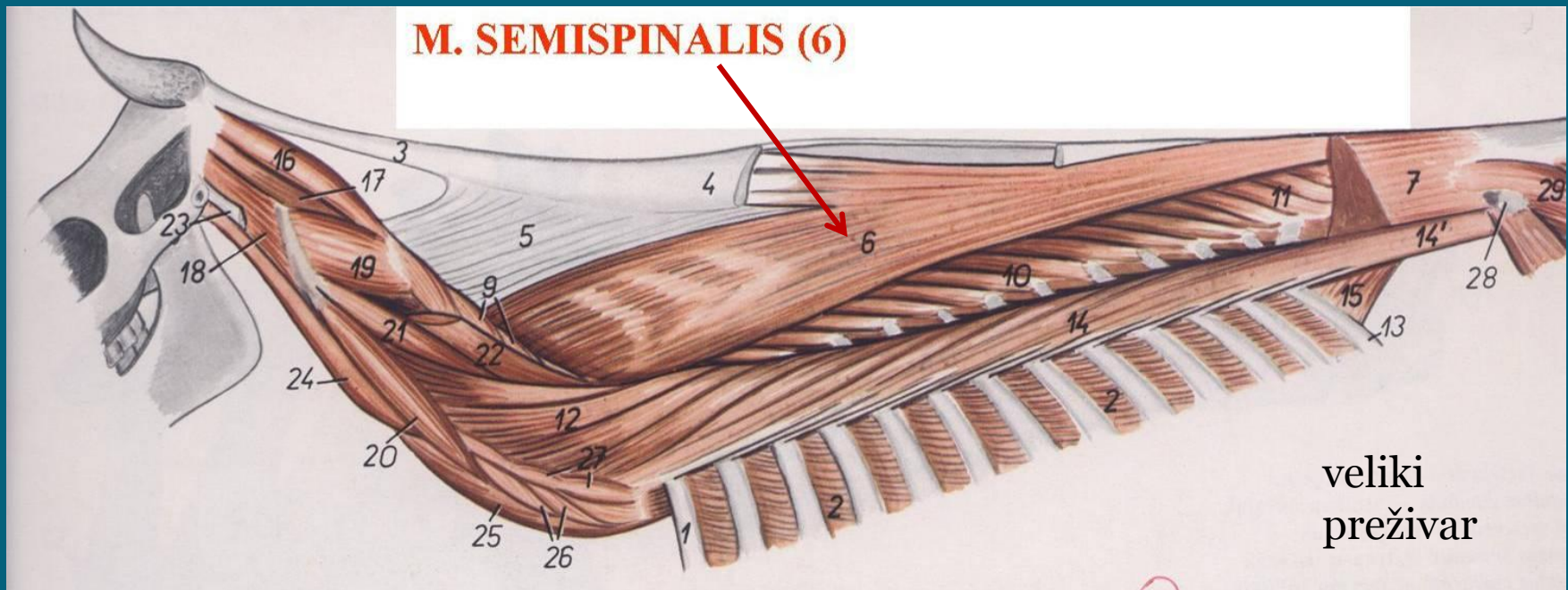


M. spinalis

longus capitis

i
i
e
f
g
h

Abb. 514. Linke Brustmuskeln des Pferdes. (Seltmann's Atlas, Pl. 114, Fig. 114.)



Kod preživara i pasa tesno je spojen sa M. semispinalisom pa se naziva:

M. spinalis et semispinalis thoracis et cervicis

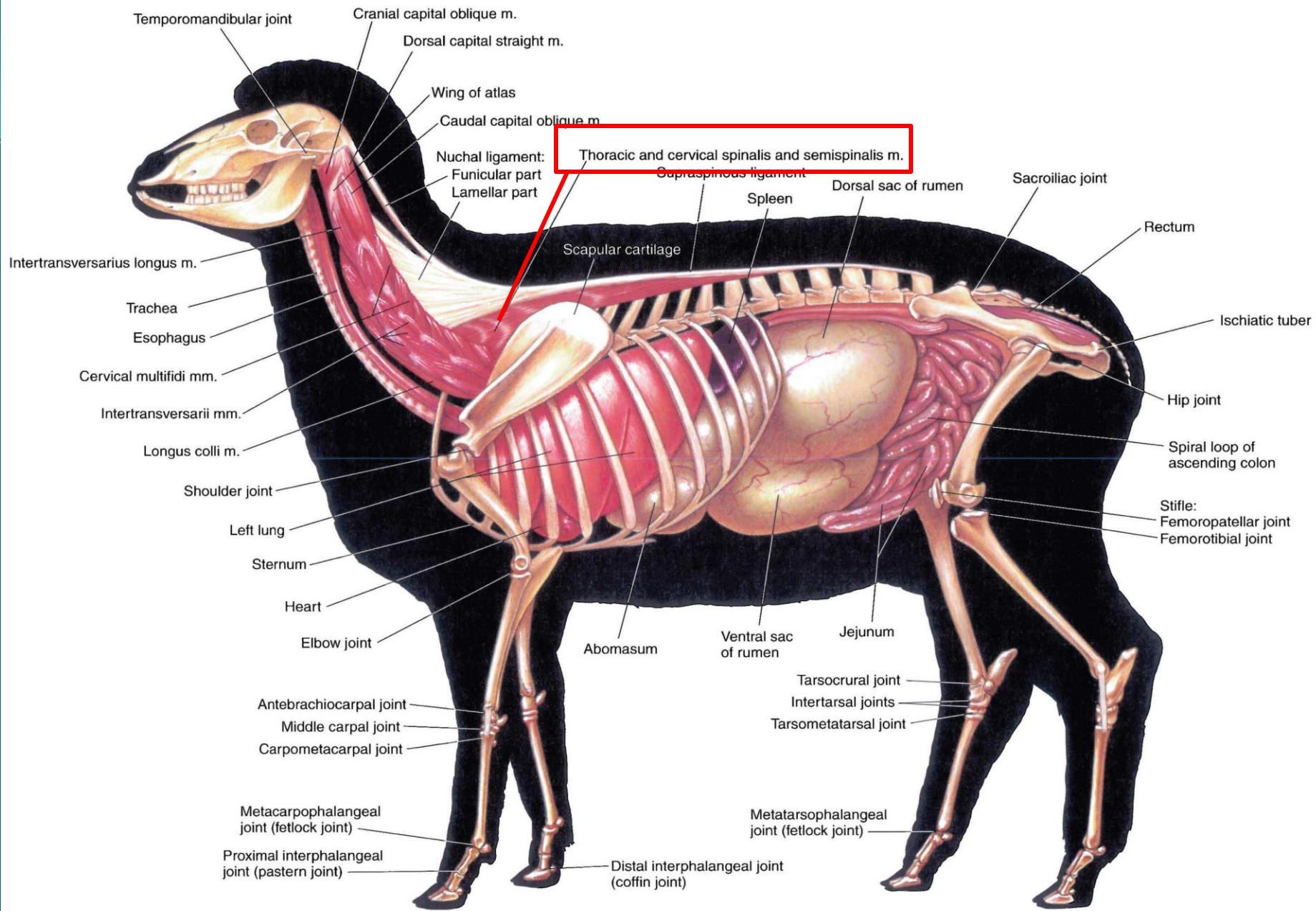


PLATE 3.8 Deep cervical muscles, *in situ* viscera, skeleton, and major joints of the ewe. Left lateral view. m = muscle

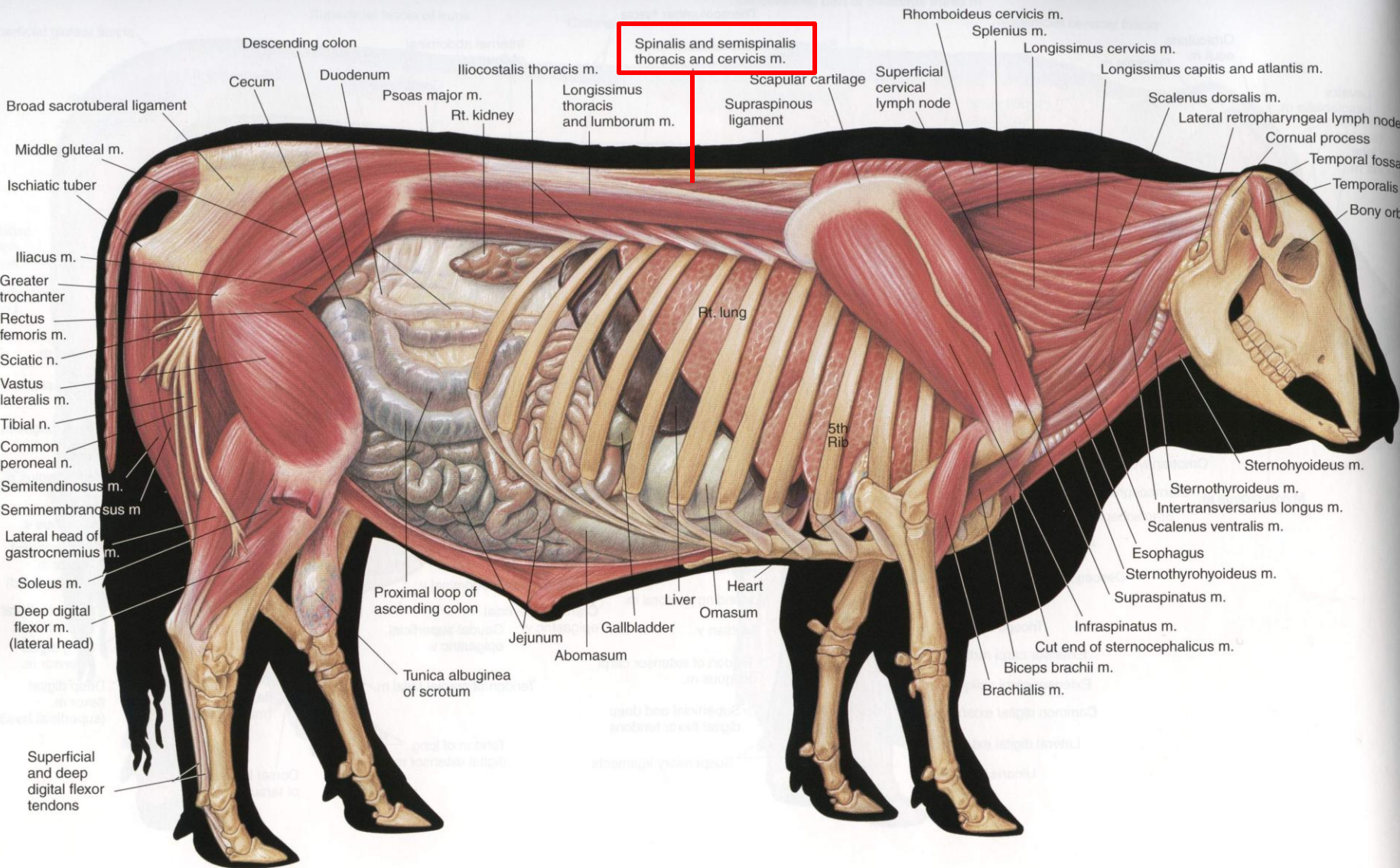


PLATE 2.7 Deep cervical muscles and *in situ* viscera of the bull. Greater omentum removed. Right lateral view. m = muscle, n = nerve

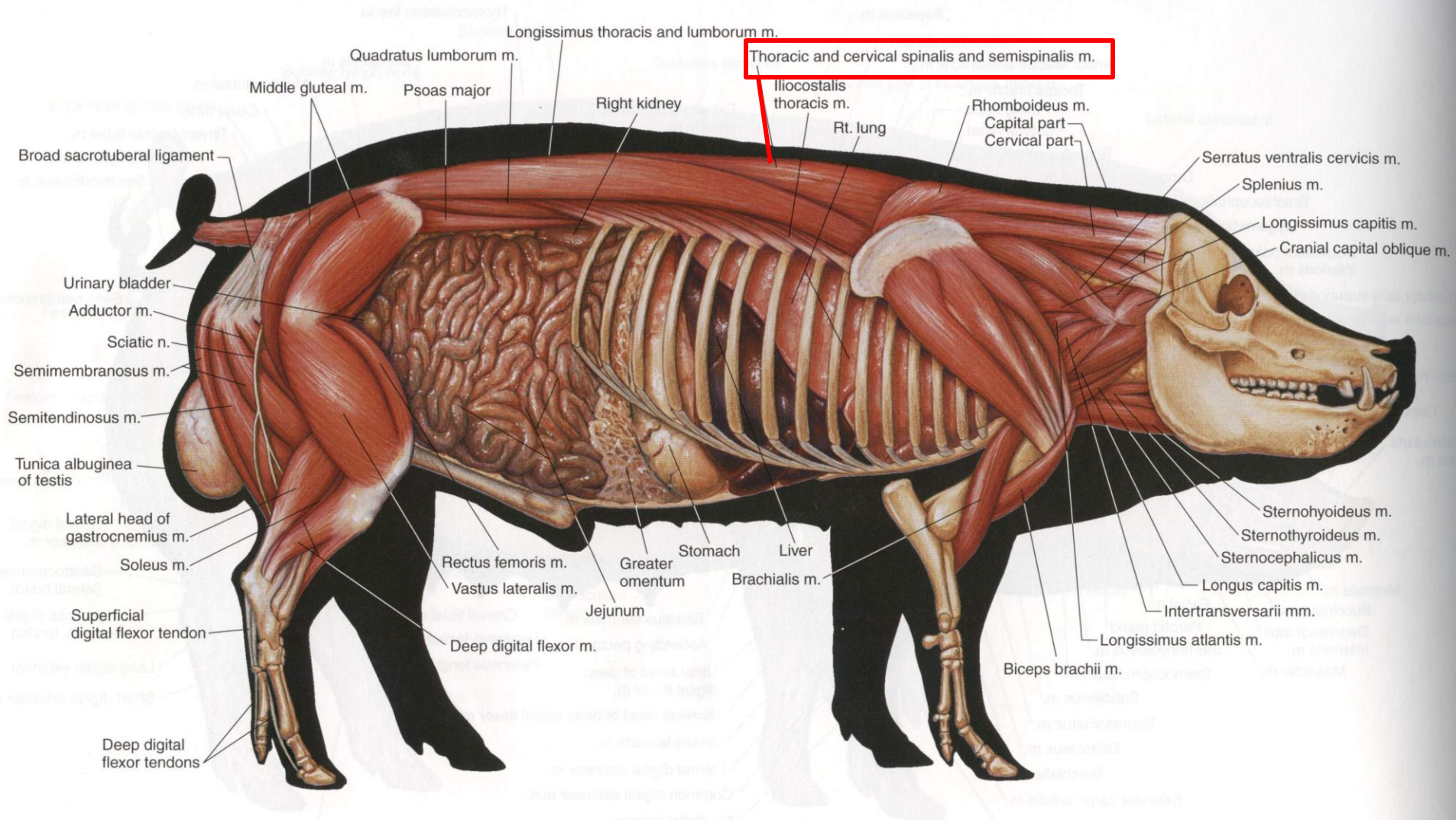
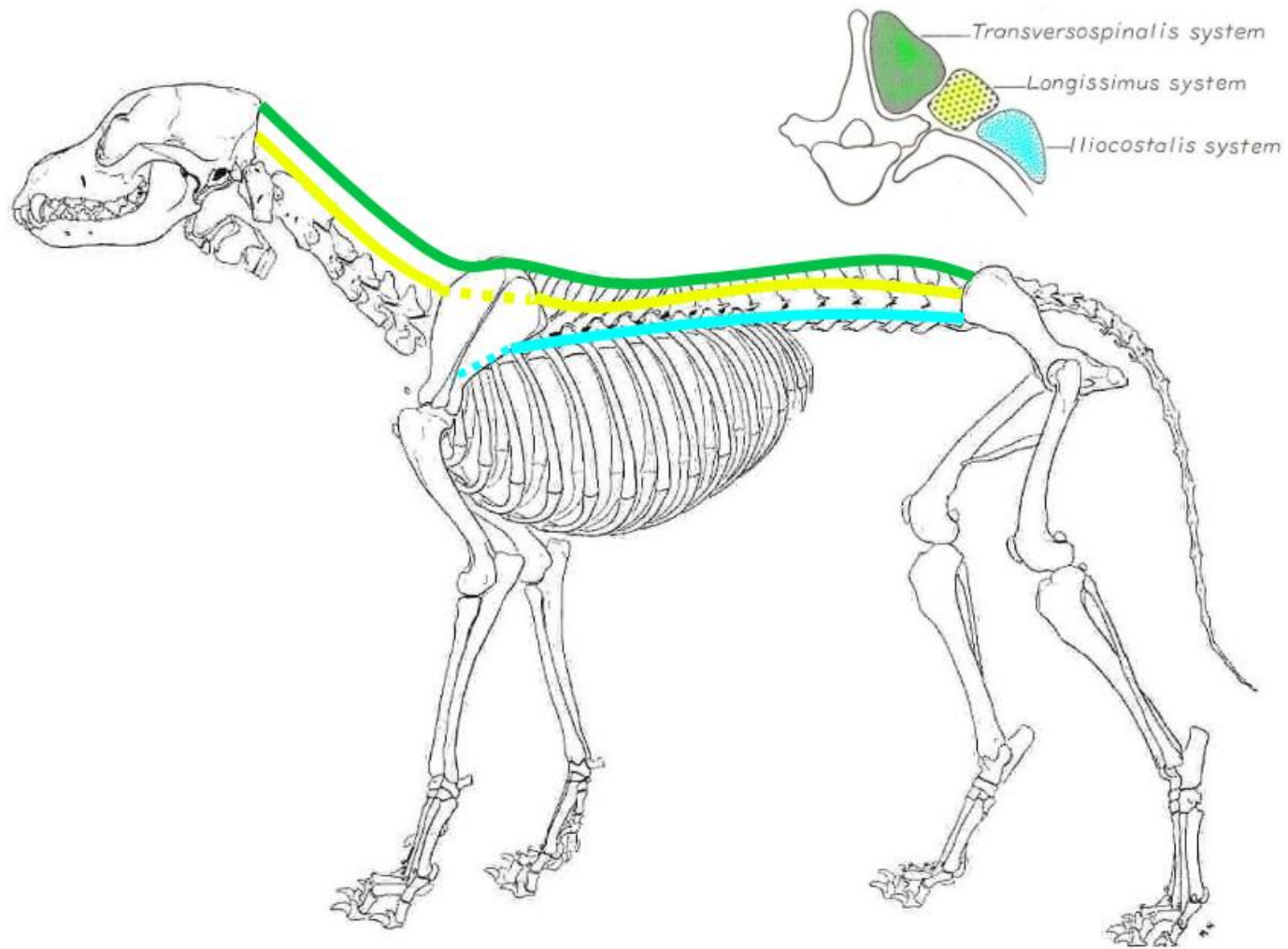
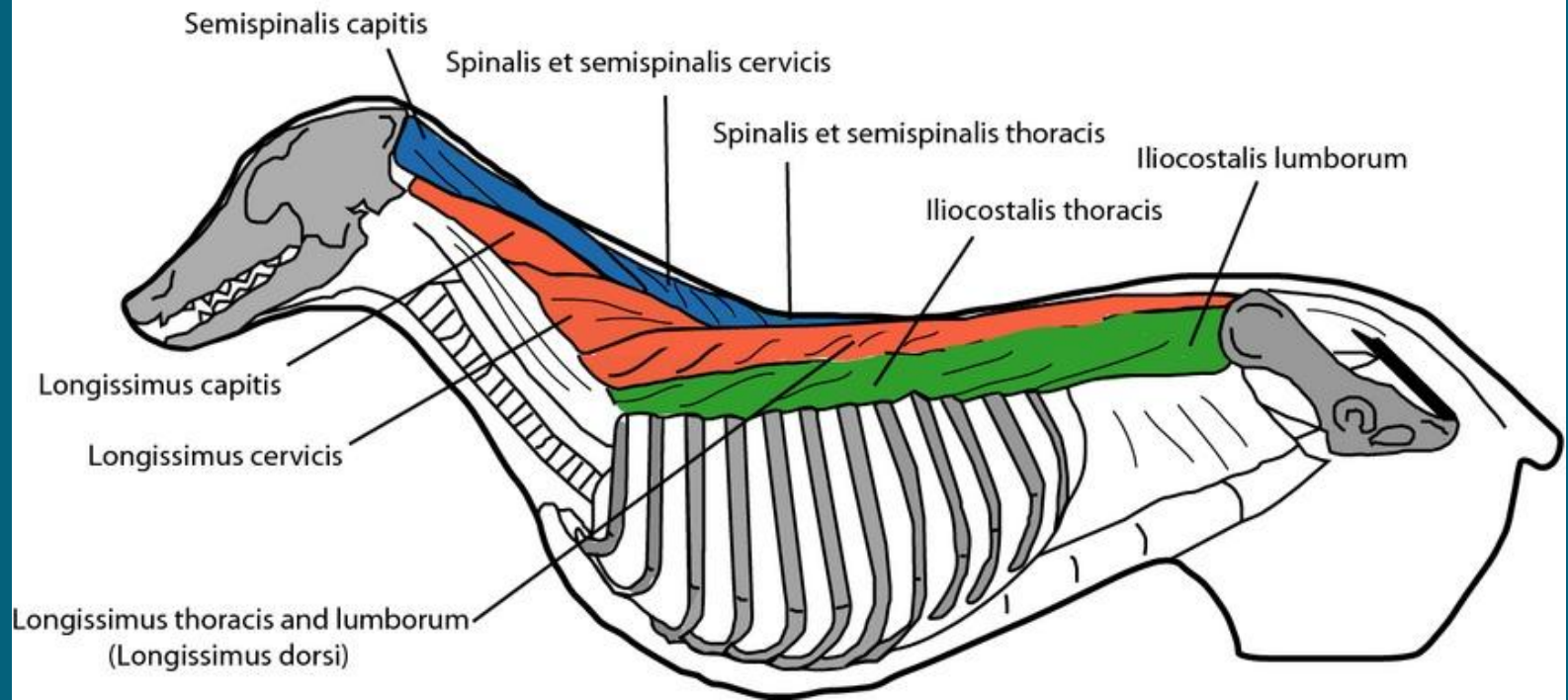
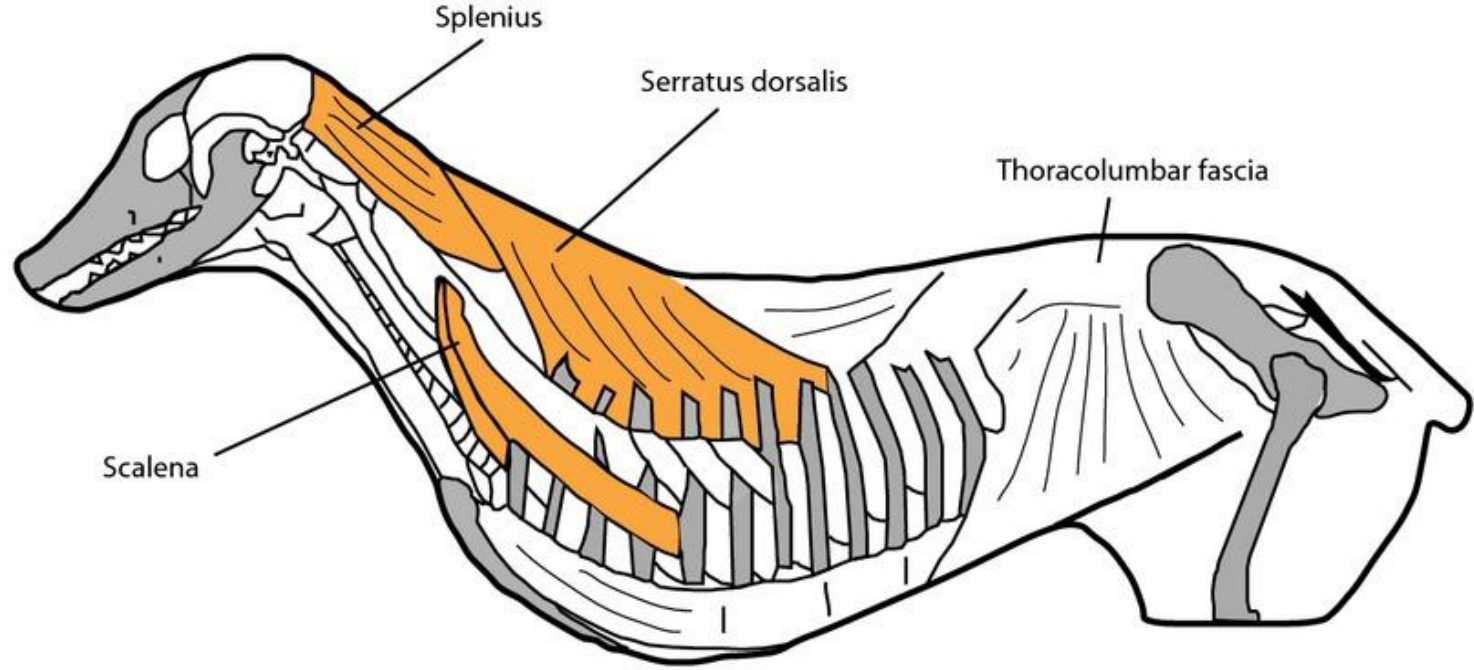


PLATE 6.7 Deep muscles and *in situ* viscera of the boar.
 Right lateral view. m = muscle, n = nerve





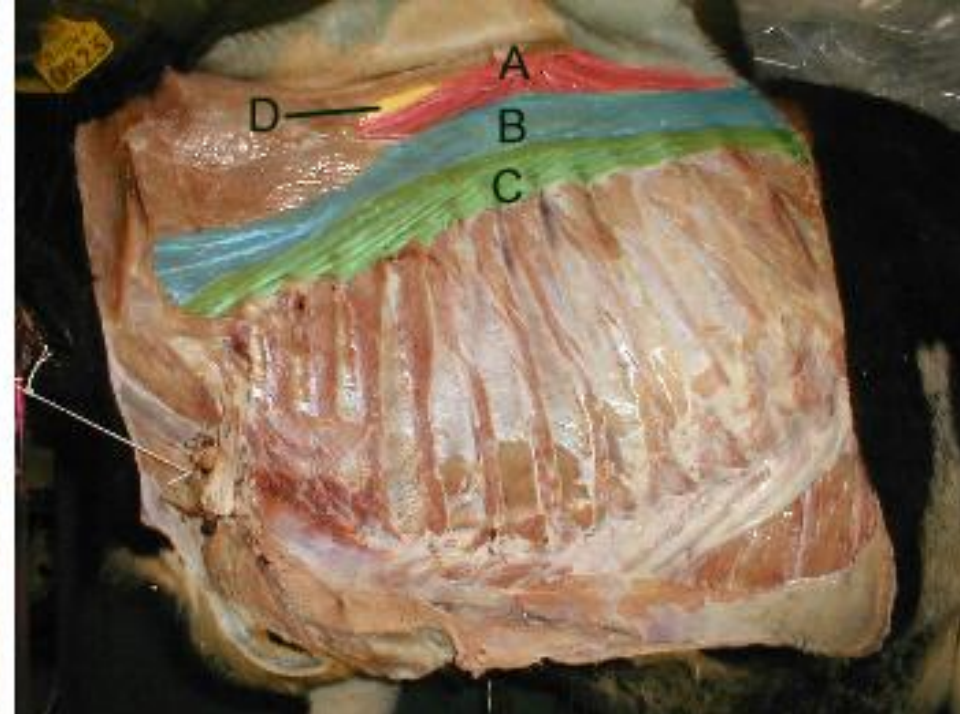
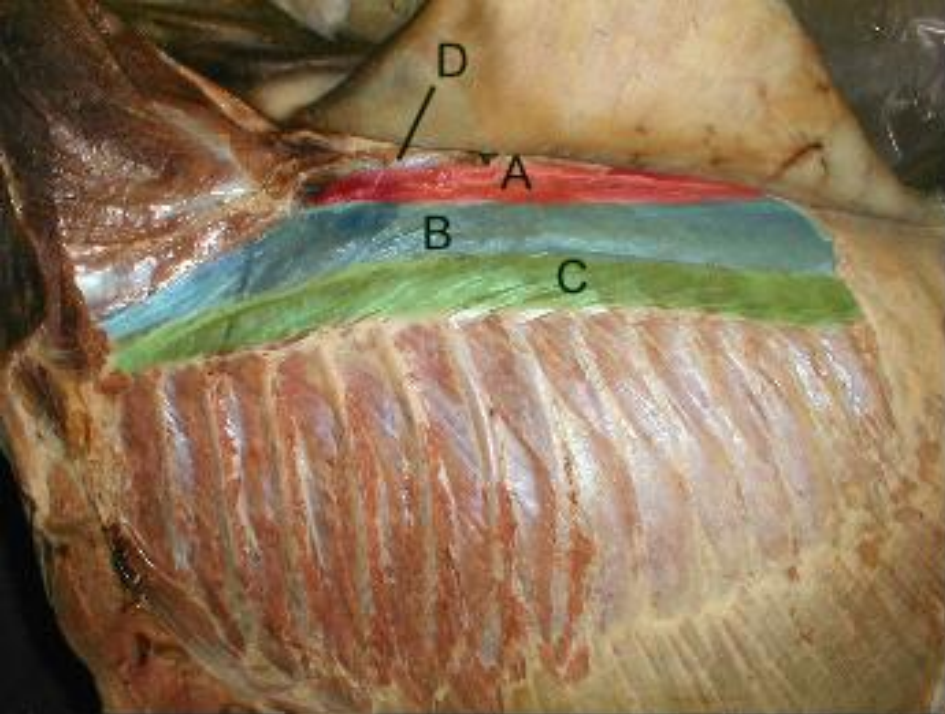
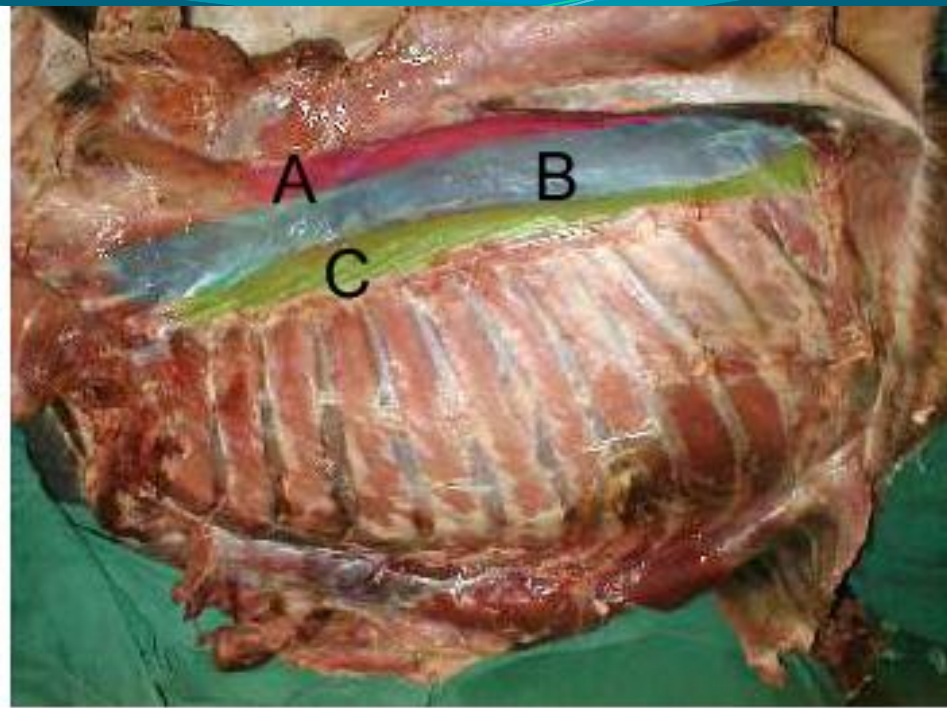
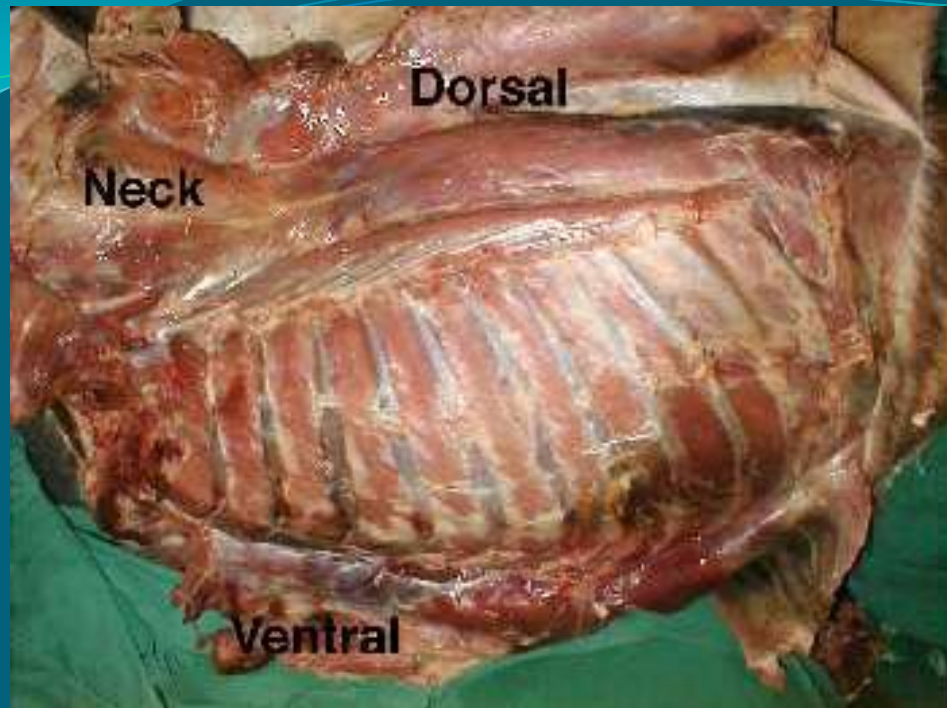


Figure 3 - Epaxial muscles (Horse.....Ox)

- A - Spinalis & semispinalis
- B - Longissimus thoracis
- C - Iliocostalis thoracis
- D - Nuchal ligament



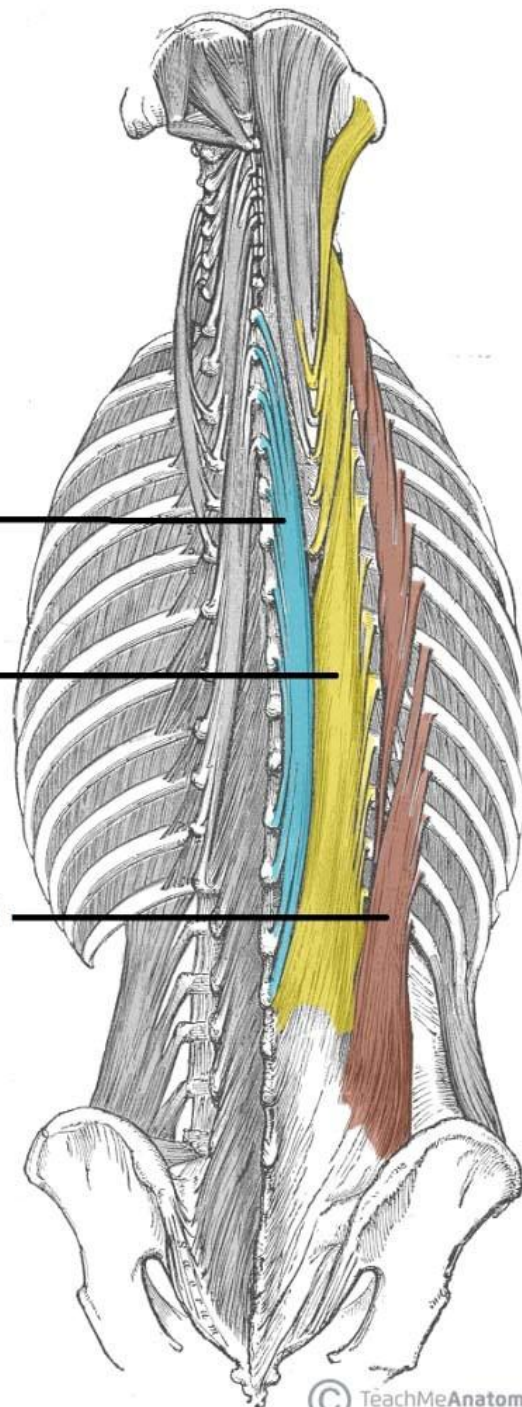
Epaxial muscles of the dog

- A - Spinalis & semispinalis
- B - Longissimus thoracis
- C - Iliocostalis thoracis

Spinalis
(thoracic only)

Longissimus

Iliocostalis

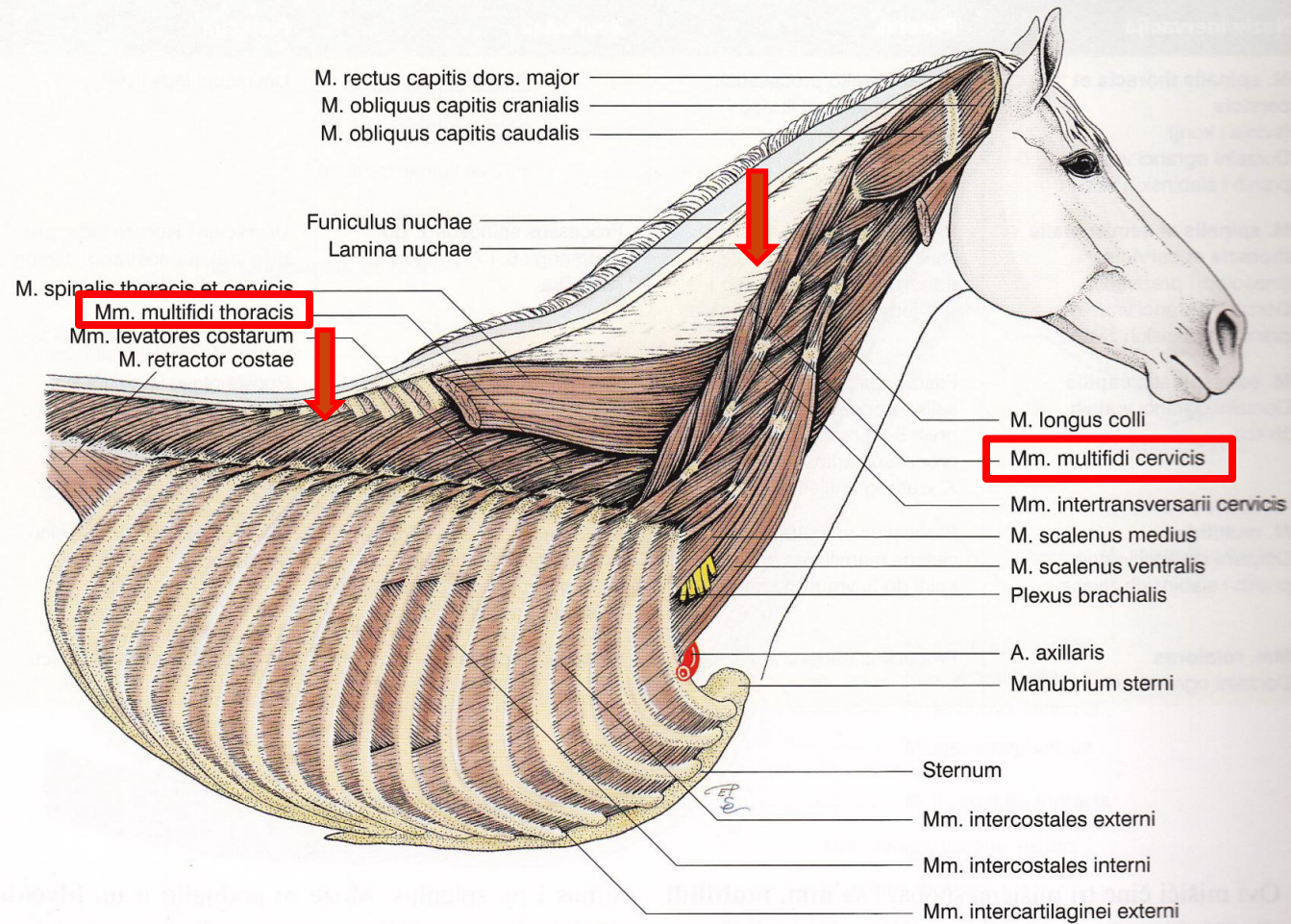




5. Mm. multifidi



Mm. multifidi



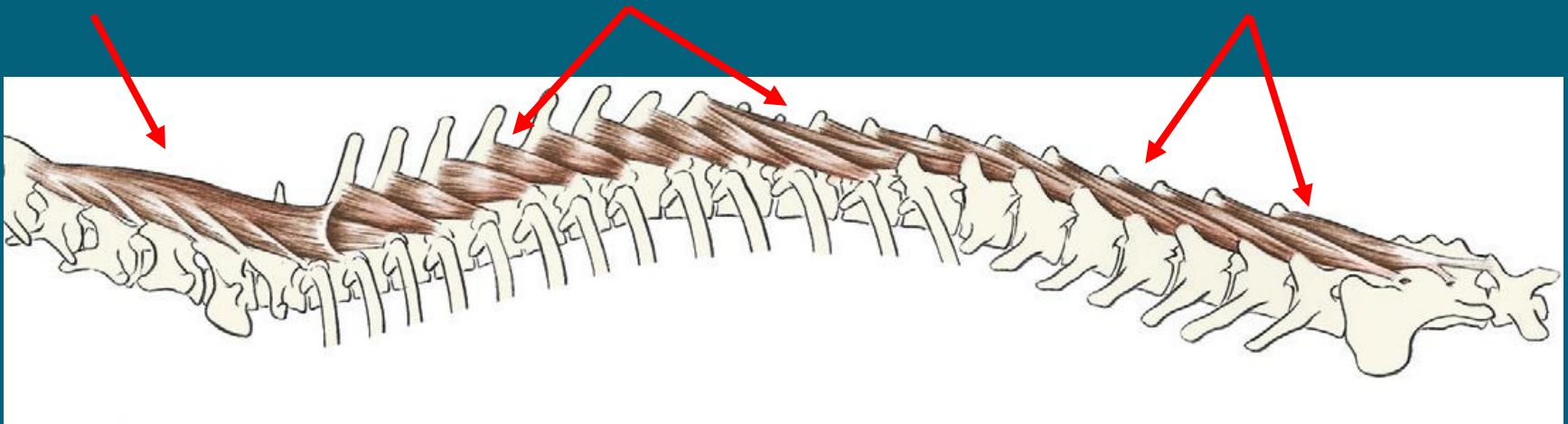
- duž kičmenog stuba: vratni, leđni i slabinski
- najdublji mišići, položeni uz trnaste izdanke pršljenova
pravac pružanja: kraniodorzalan
jednim krajem se prihvata za zglobni i transverzalni izdanak
prelazi kranijalno preko 2 - 6 pršljena
drugim krajem se prihvata za trnasti izdanak

Mm. multifidi

Mm. multifidi cervicis

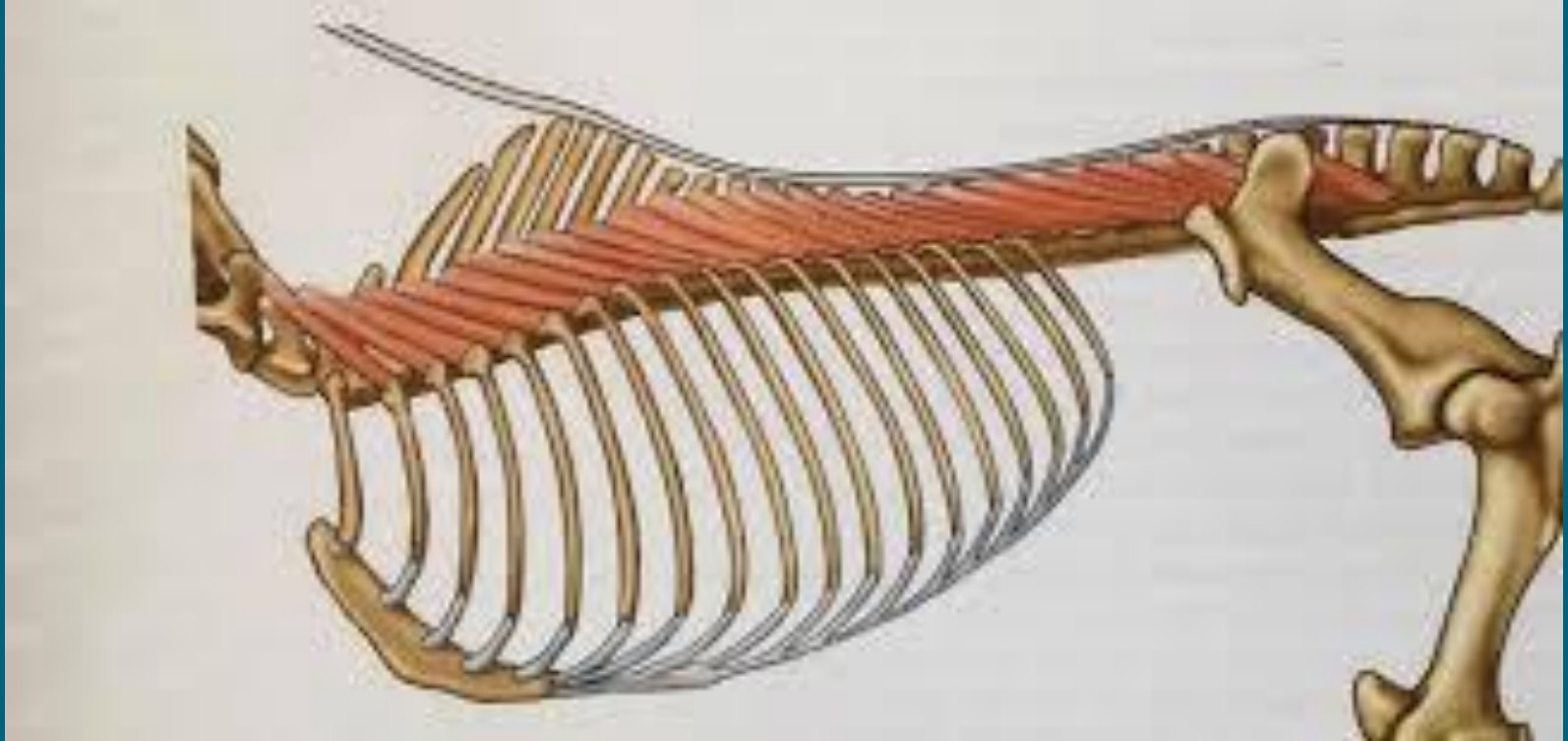
Mm. multifidi thoracis

Mm. multifidi lumborum



PAS

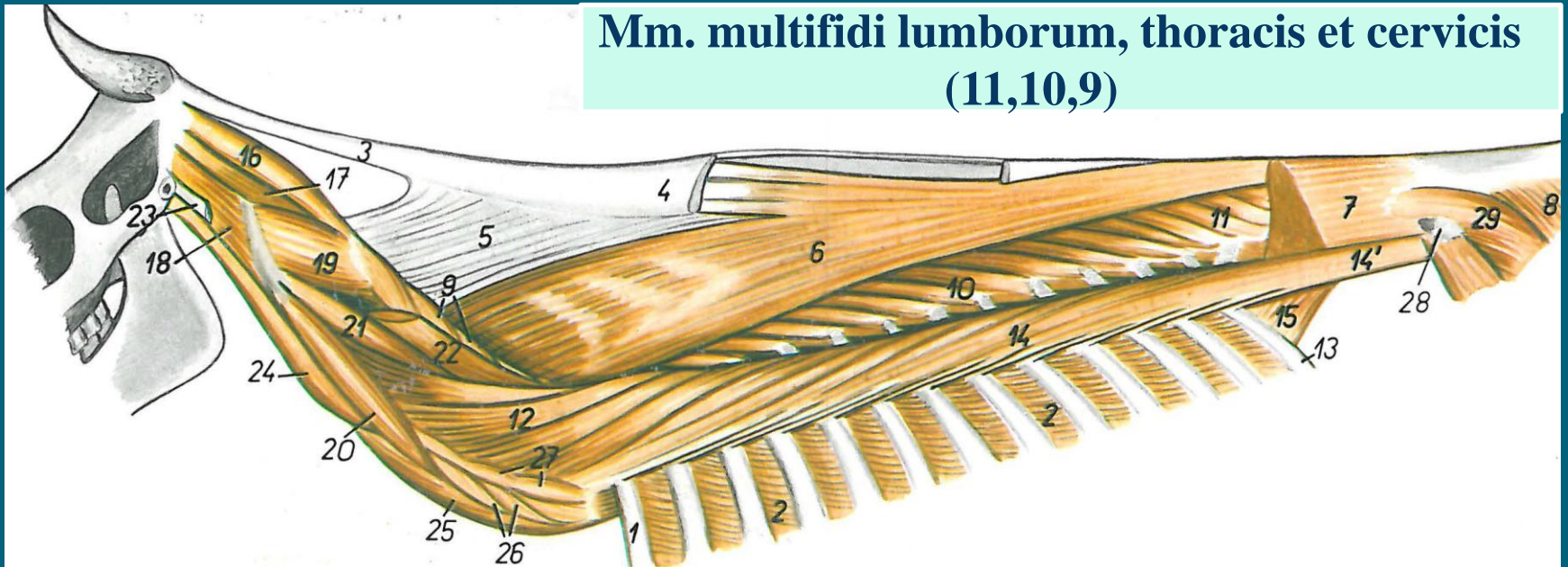
Mm. multifidi



KONJ

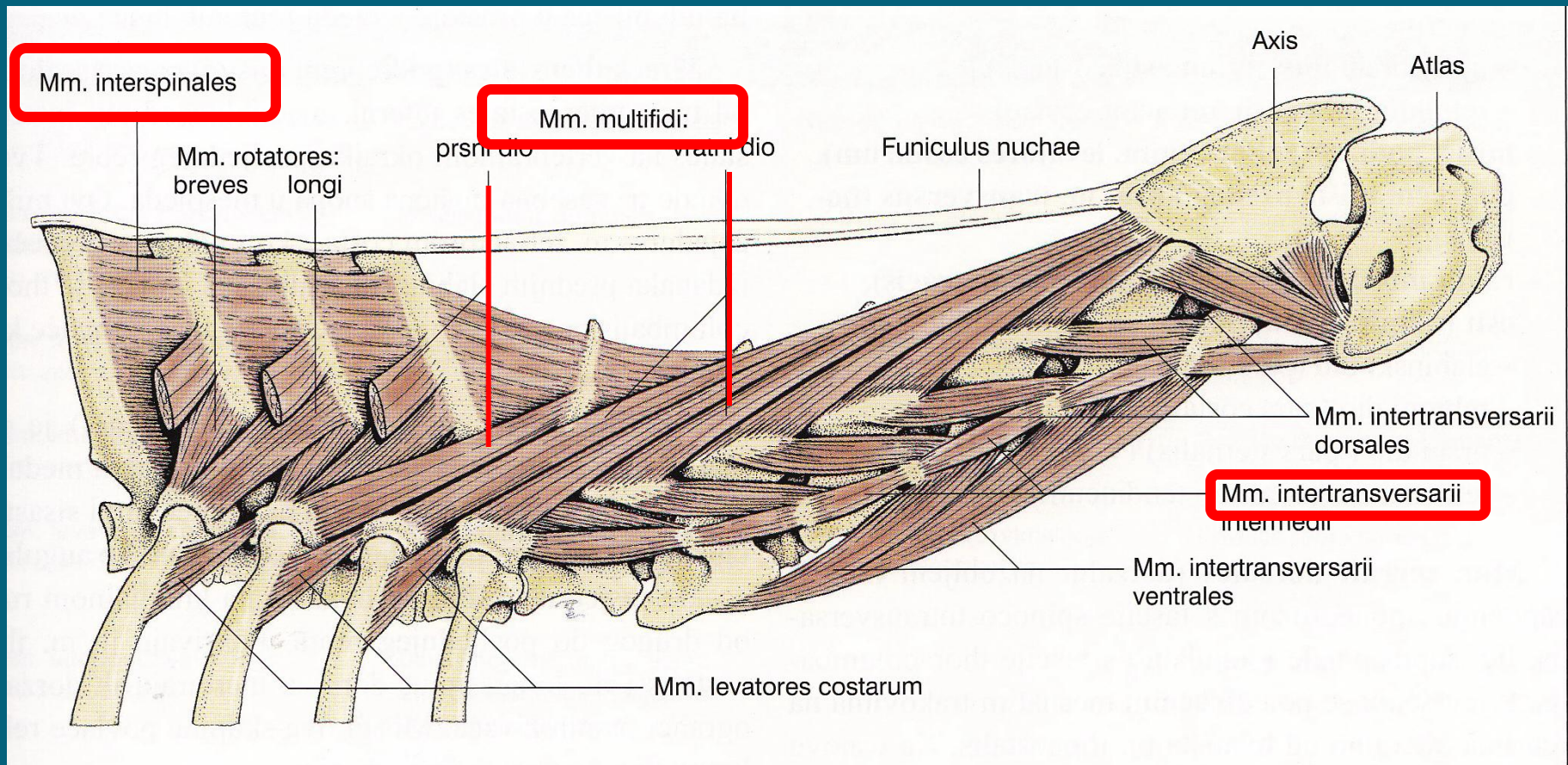
Mm. multifidi

Mm. multifidi lumborum, thoracis et cervicis
(11,10,9)



Veliki preživar

Mm. multifidi i drugi kratki mišići kičme





Fleksori slabinskog dela kičme

1. *M. quadratus lumborum*

2. *M. iliopsoas*

a) *M. Iliacus*

M. iliacus lateralis

M. iliacus medialis

b) *M. psoas major*

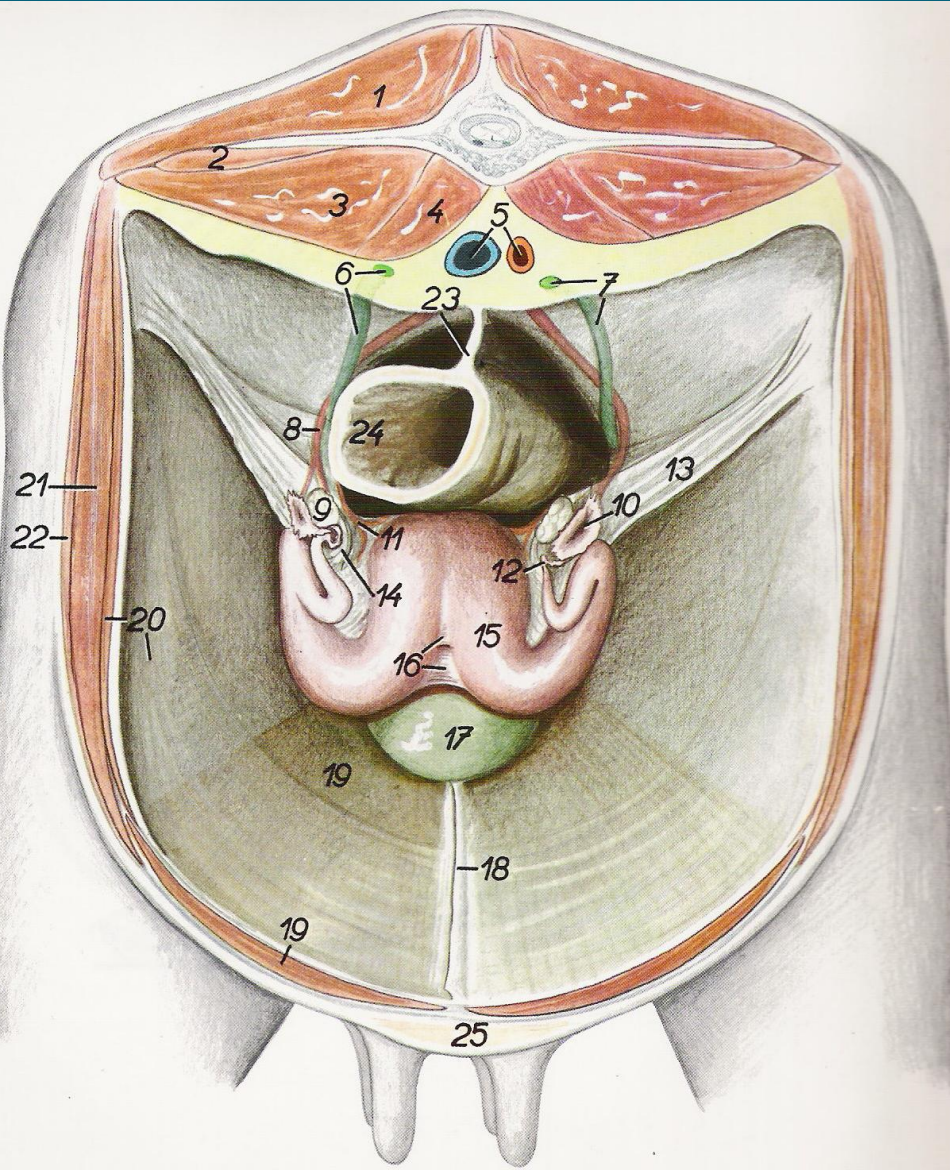
3. *M. psoas minor*



MIŠIĆI KARLIČNOG POJASA



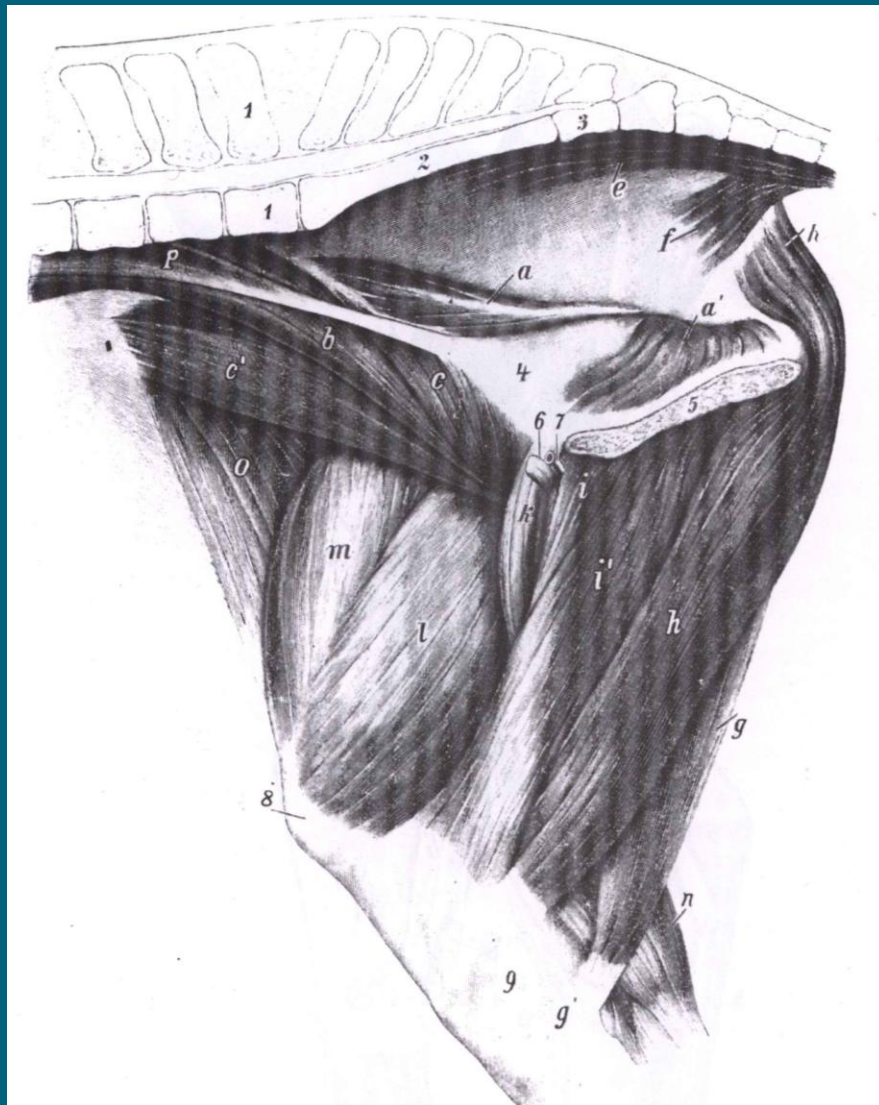
M. quadratus lumborum



- 1- M. longissimus lumborum
- 2- M. quadratus lumborum
- 3- M. psoas major
- 4- M. psoas minor



M. iliopsoas

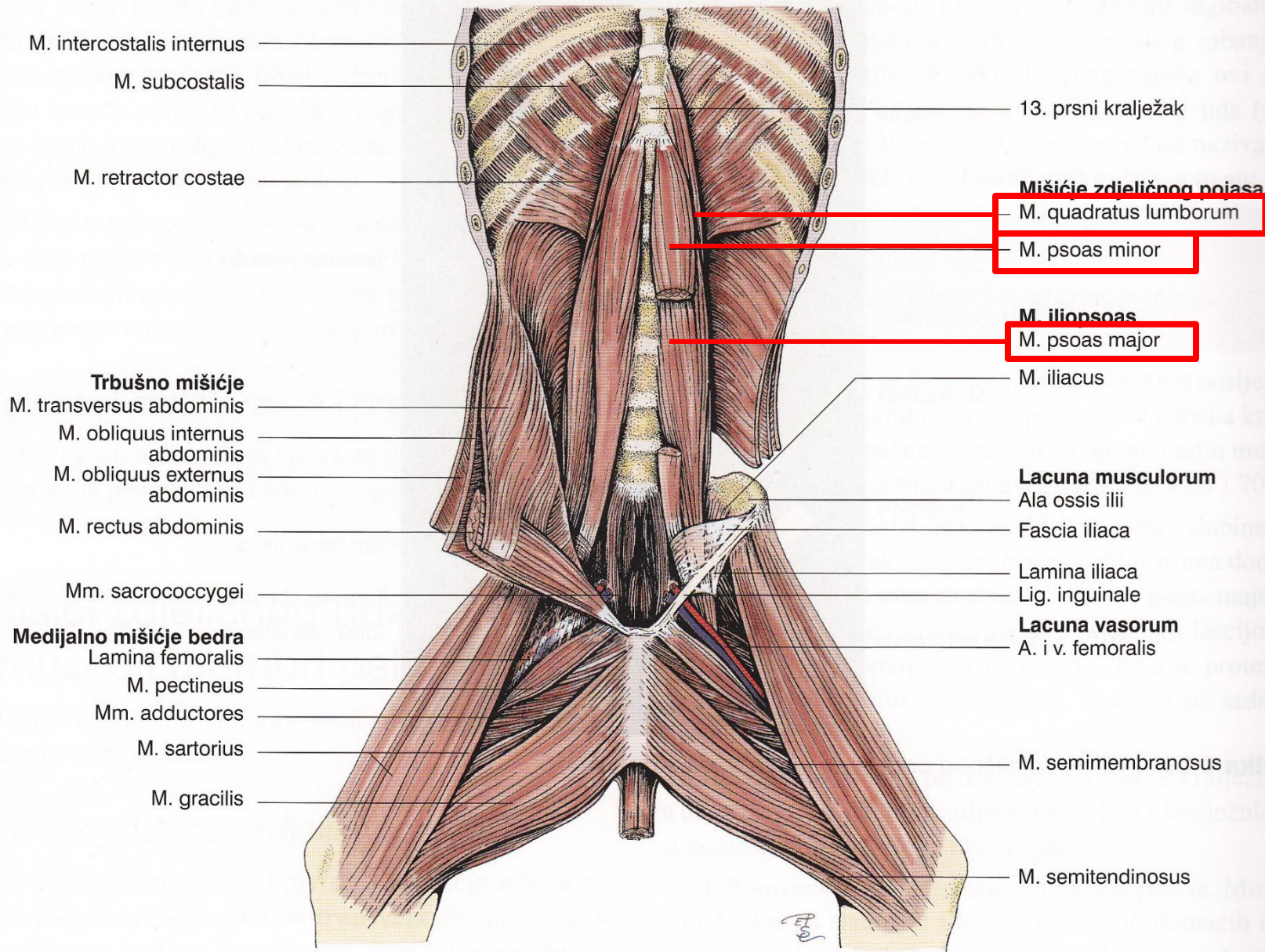


M. psoas major (b)

M. Iliacus

M. iliacus lateralis (c')

M. iliacus medialis (c)



Slika 4-70. Shematski prikaz pojasnog mišićja zdjelice, medijalnih mišićja bedra i trbušnih mišićja psa (ventralna strana), prema Ellenberger i Baum, 1943.



UNIVERZITET U BEOGRADU
FAKULTET VETERINARSKЕ MEDICINE

HVALA NA PAŽNJI