

MUSCULI CAPITIS

- **Mišići jezika i jezične kosti**
- **Mišići lica i ušne školjke**
- **Infraorbitalni mišići oka**
- **Mišići donje vilice**
- **Mišići grkljana**
- **Mišići ždrela**

FASCIAE

- Fasciae superficiales
- Fasciae profundae

Fasciae superficiales

- Fascia parotidea
- Fascia subhyoidea
- Fascia masseterica
- Fascia nasobuccalis
- Fascia mandibularis
- Lamina superficialis fasciae temporalis

Fasciae profundae

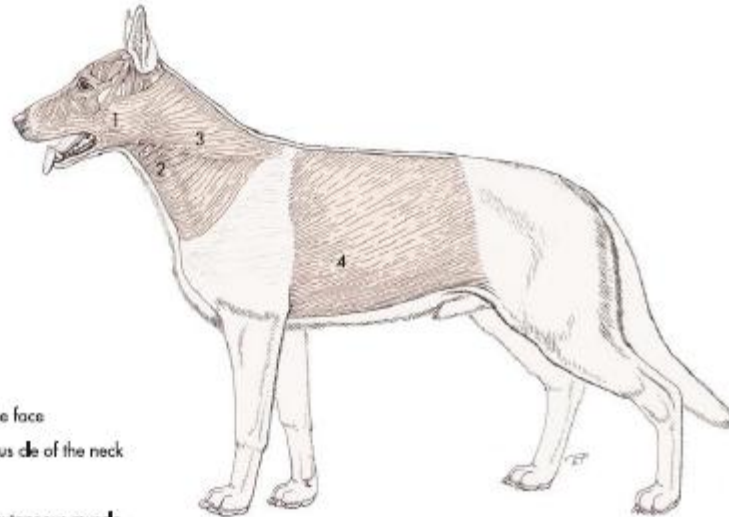
- **Fascia buccopharyngea**
- **Lamina profunda fasciae temporalis**

MUSCULI FACIALES ET AURICULARES

- **Musculi cutanei**
- **Musculi labiorum, buccarum et nasi**
- **Musculi extraorbitales**
- **Musculi auriculares**

Musculi cutanei

- **M. cutaneus faciei**
- **M. cutaneus labiorum**
- **M. cutaneus frontalis (bo)**
- **M. cutaneus nasi (bo)**



- 1 = Cutaneous muscles of the face
- 2 = Superficial sphincter muscles of the neck
- 3 = Platysma
- 4 = Abdominal part of the cutaneous muscles

Fig. 3.2 Cutaneous muscles of the head, the neck and the back of the dog (lateral aspect).

Musculi labiorum, buccarum et nasi

- **M. orbicularis oris**
- **M. levator nasolabialis**
- **M. levator labii superioris**
- **M. depressor labii inferioris**
- **M. depressor labii superioris**

- **M. caninus**
- **M. mentalis**
- **Mm. incisivi**
- **Mm. nasales**
- **M. buccinator**
- **M. zygomaticus**

M. orbicularis oris

- Kružni mišić usta, ispod kože usana
- F: zatvara usta
- I: n. facialis

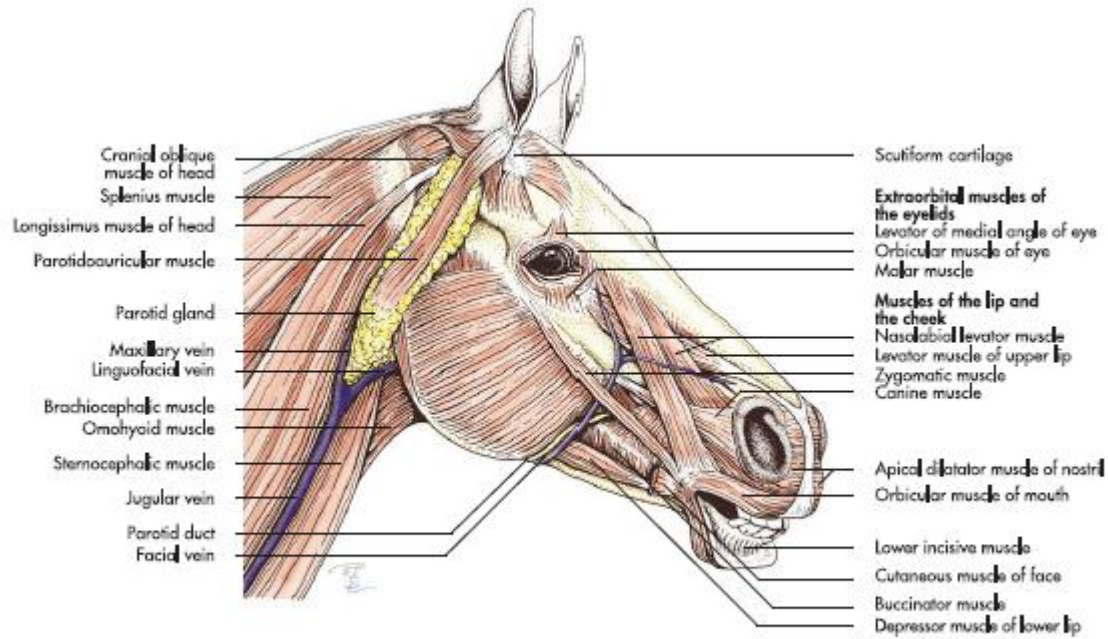
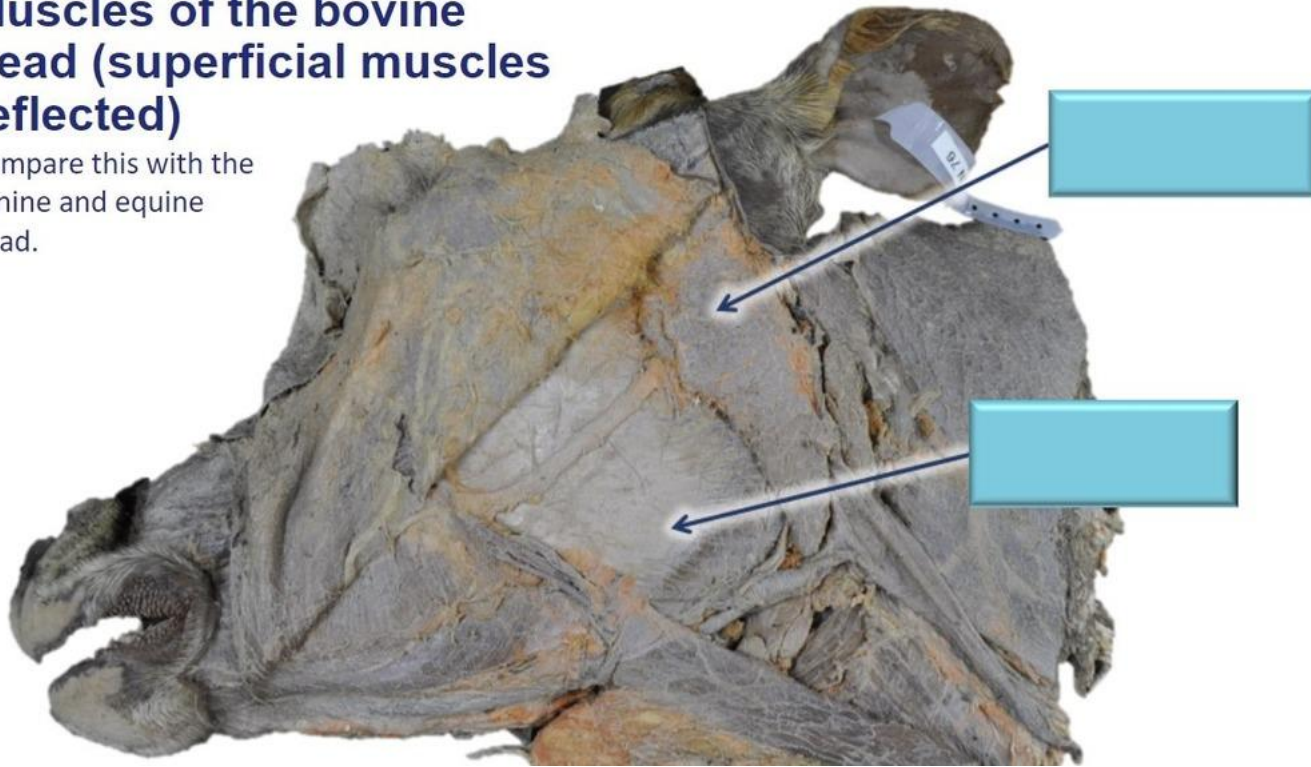


Fig. 3.4 Superficial muscles of the head of the horse (schematic, lateral aspect); fig. based on data from Chetie, 1954.

Muscles of the bovine head (superficial muscles reflected)

Compare this with the canine and equine head.



Mm. incisivi

- **M. incisivus superior**
- **M. incisivus inferior**

- O: arcus alveolaris
- I: m. orbicularis oris
- F: superior podiže gornju usnu, a inferior vuče donju usnu nadole
- I: n. facialis

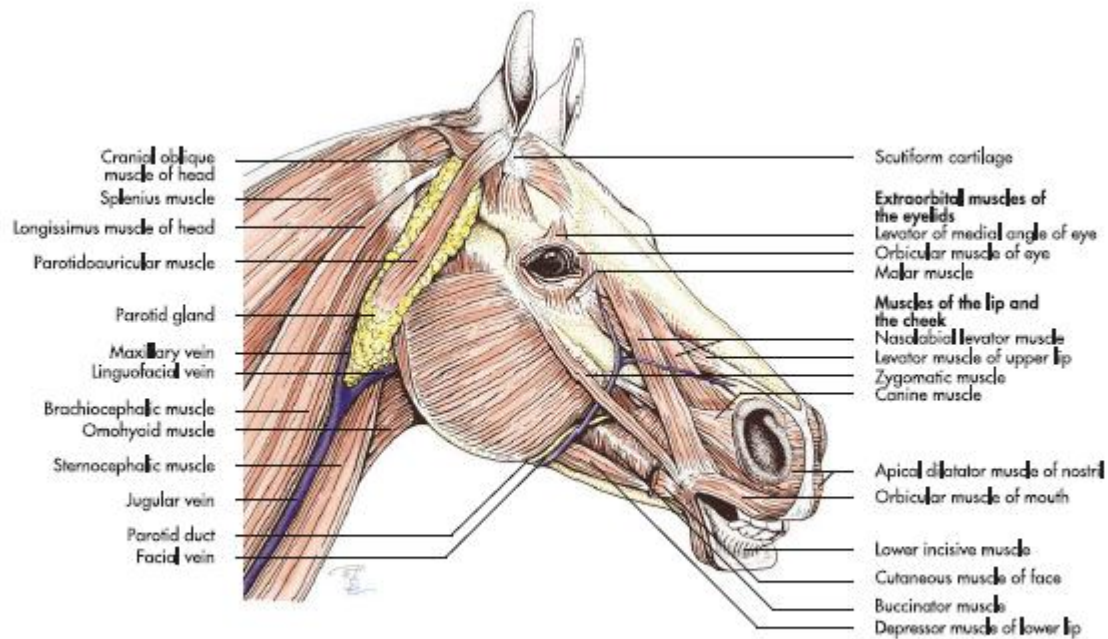


Fig. 3.4 Superficial muscles of the head of the horse (schematic, lateral aspect); fig. based on data from Chetie, 1954.

M. levator nasolabialis

- **Eq**
- **O:** os frontale et nasale
- **I:** dorzalni krak u lateralnom zidu nozdrve i labium superius, a ventralni krak u m. orbicularis oris

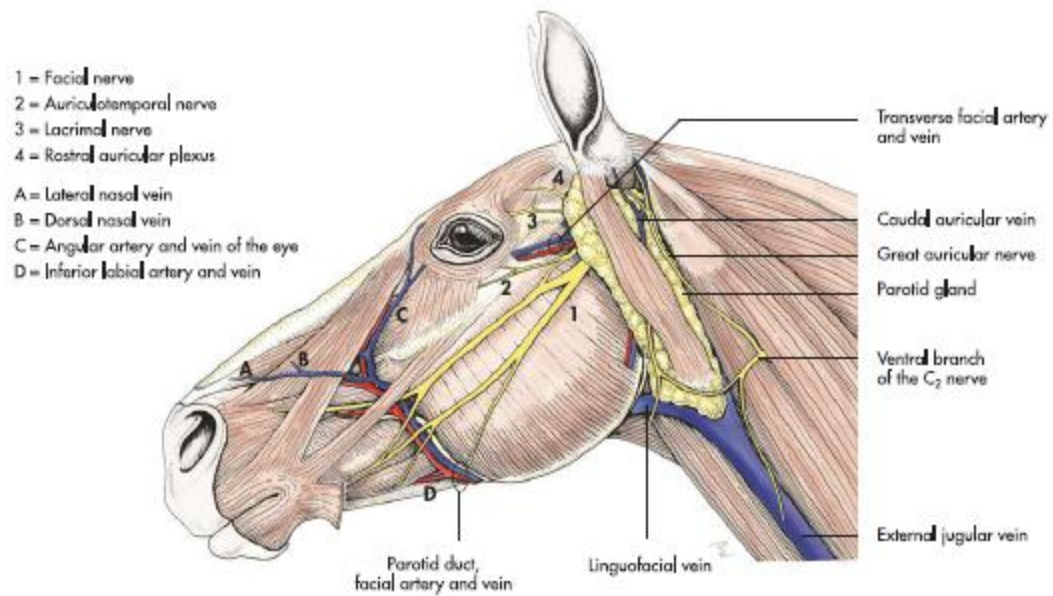
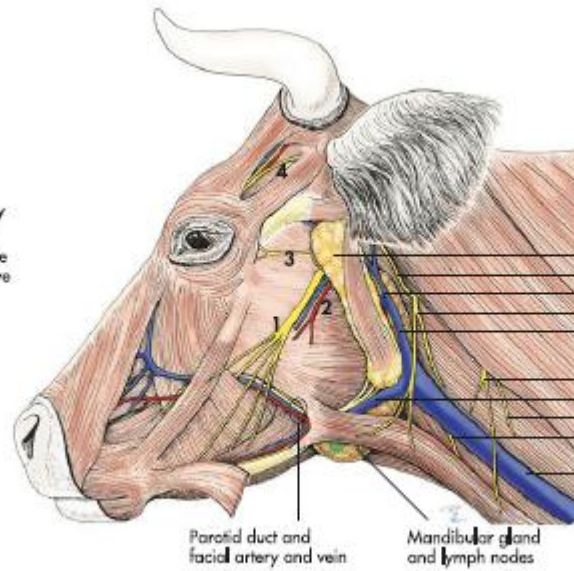


Fig. 20.8 Topography of the superficial organs and structures of the head in the horse (schematic).

- **Ru**
- O: m. cutaneus frontalis et nasi
- I: lateralni krak u koži lateralnog zida nozdrve i labium superius, a medijalni krak u processus nasalis ossis incisivi

- 1 = Facial nerve (VII)
- 2 = Transverse facial artery and vein
- 3 = Palpebral branch of the auriculopalpebral nerve
- 4 = Cornual artery, vein and nerve



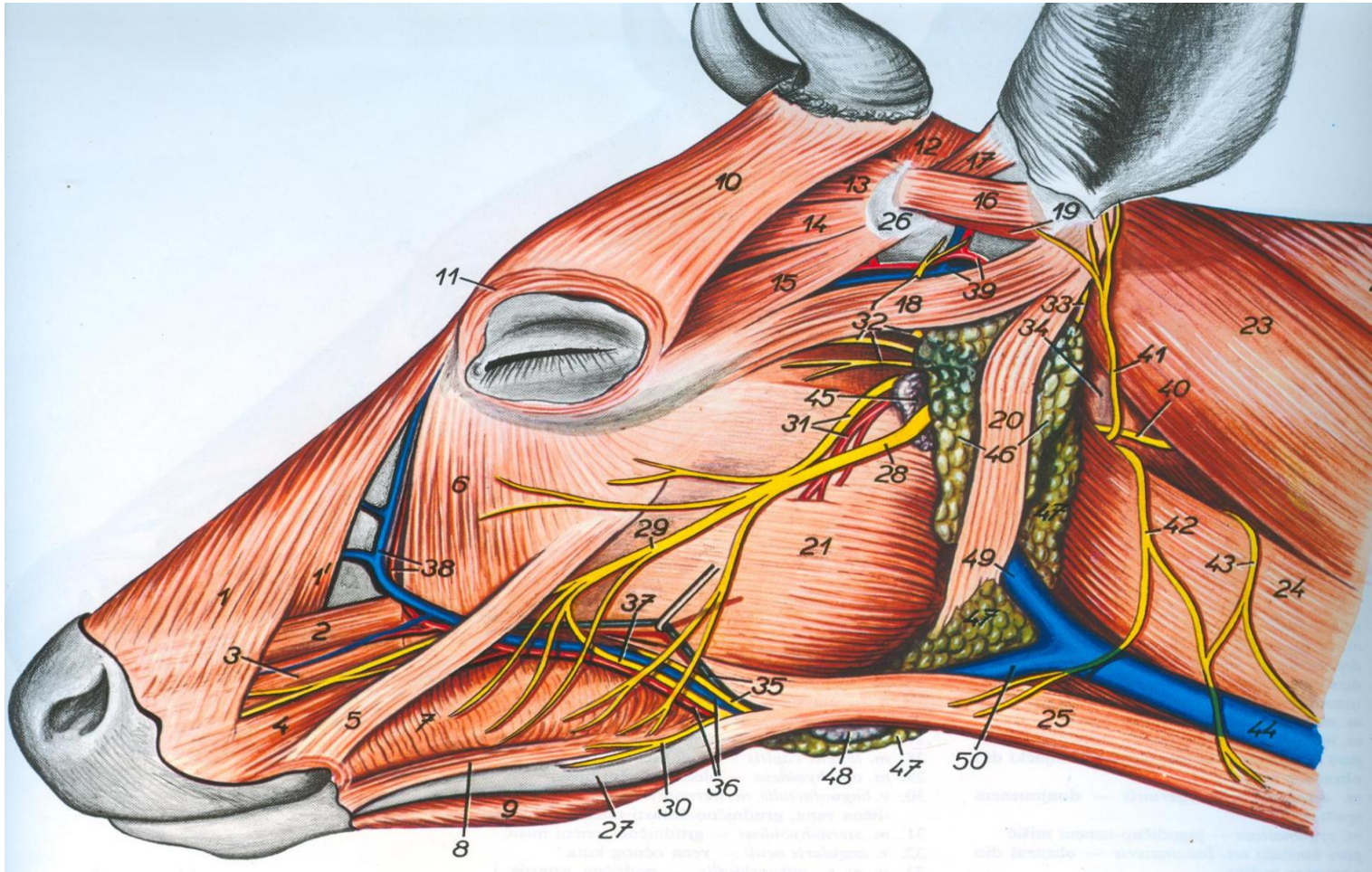
Parotid gland
Great auricular nerve
Caudal auricular vein
Ventral branch of the C₂ nerve
Maxillary vein

Ventral branch of the C₃ nerve
Linguofacial vein
Branch of the accessory nerve (XI)
Branch of the accessory nerve (XI)
External jugular vein

Parotid duct and facial artery and vein

Mandibular gland and lymph nodes

Fig. 20.5 Topography of the superficial organs and structures of the head in the ox (schematic).



- **Su**
- O: os nasale
- I: labium superius

- **Car**
- O: maxilla
- I: m. orbicularis oris

- F: širi nozdrve i podiže gornju usnu
- I: n. facialis

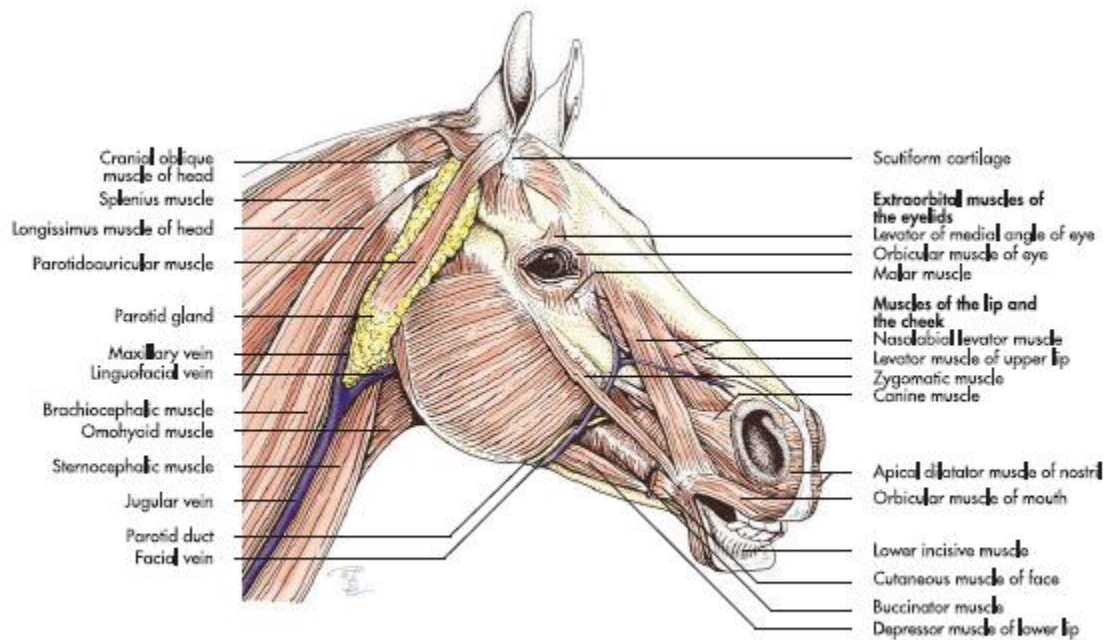


Fig. 3.4 Superficial muscles of the head of the horse (schematic, lateral aspect); fig. based on data from Ghetie, 1954.

M. levator labii superioris

- Eq
- O: maxilla, os lacrimale et os zygomaticum
- I: labium superius

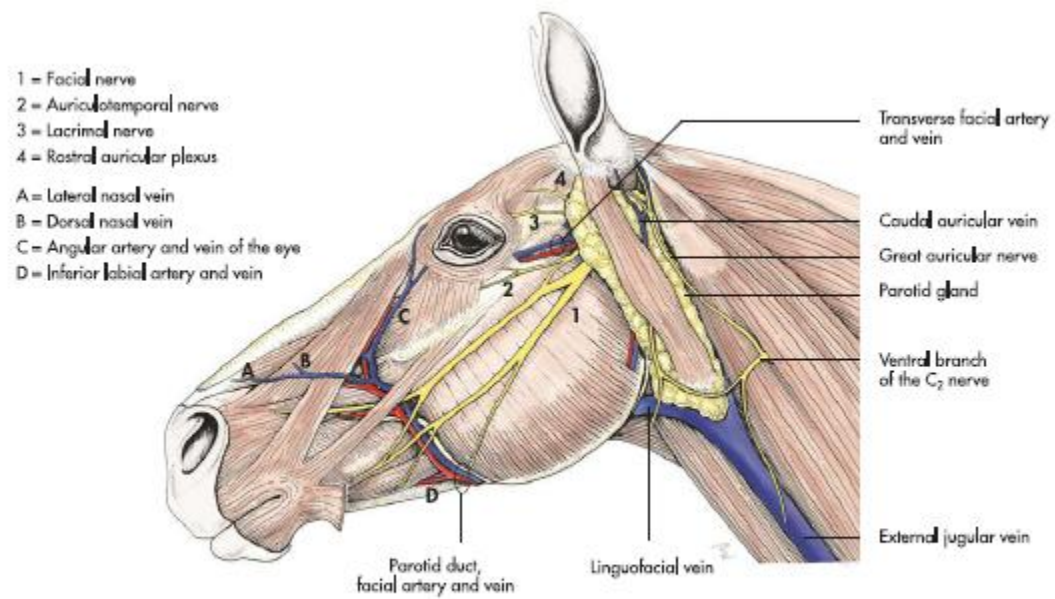
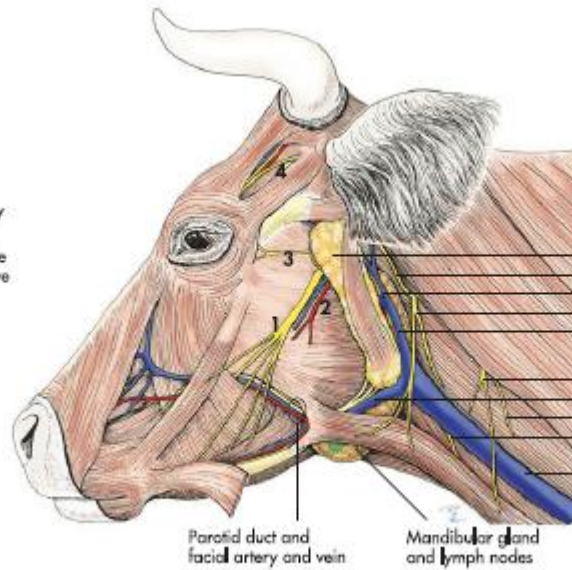


Fig. 20.8 Topography of the superficial organs and structures of the head in the horse (schematic).

- **Ru**
- O: tuber faciale
- I: m. levator nasolabialis et planum nasolabiale

- 1 = Facial nerve (VII)
- 2 = Transverse facial artery and vein
- 3 = Palpebral branch of the auriculopalpebral nerve
- 4 = Cornual artery, vein and nerve



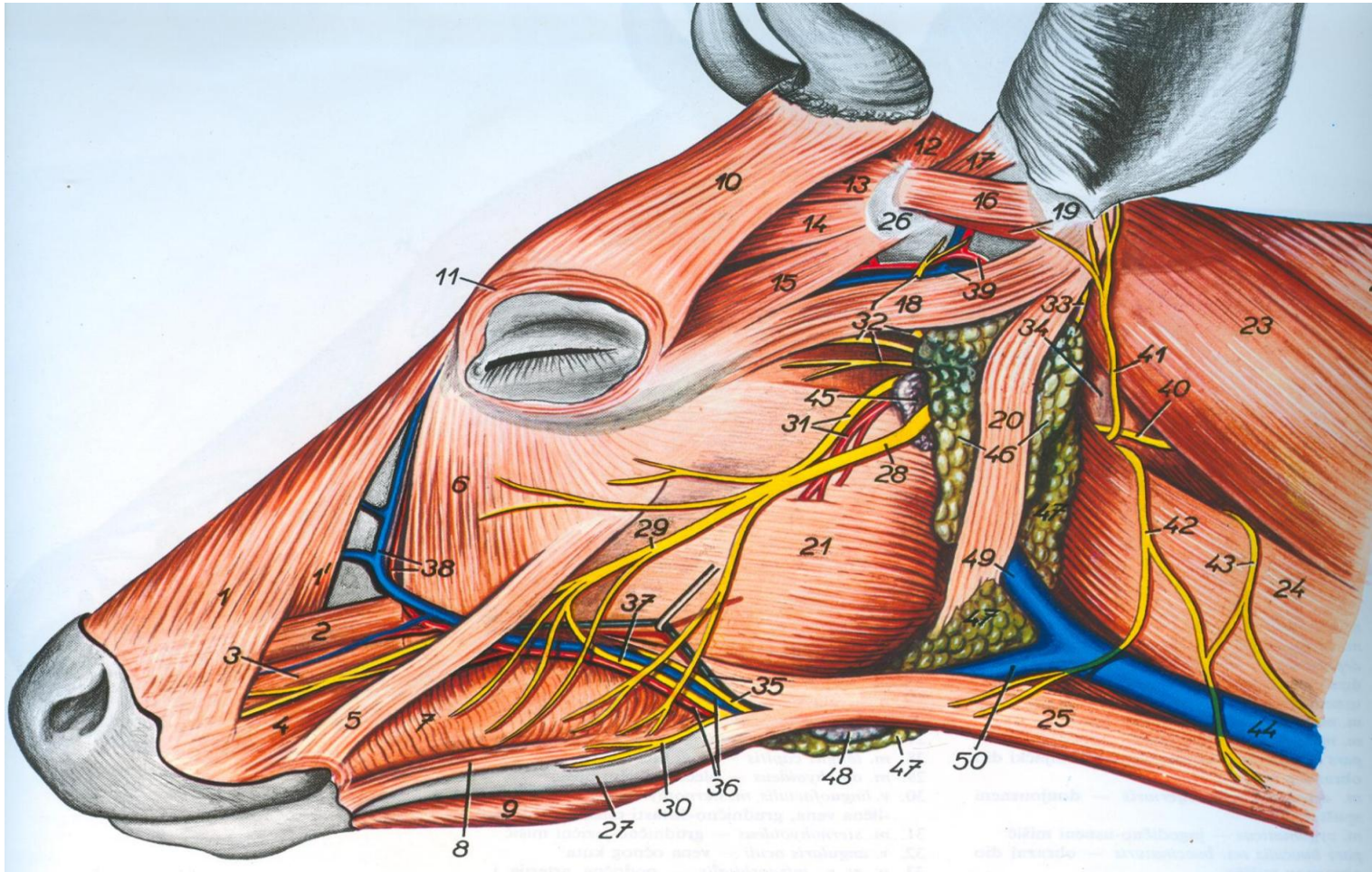
Parotid gland
Great auricular nerve
Caudal auricular vein
Ventral branch of the C₂ nerve
Maxillary vein

Ventral branch of the C₃ nerve
Linguofacial vein
Branch of the accessory nerve (XI)
Branch of the accessory nerve (XI)
External jugular vein

Parotid duct and facial artery and vein

Mandibular gland and lymph nodes

Fig. 20.5 Topography of the superficial organs and structures of the head in the ox (schematic).



- **Su**
- O: fossa canina
- I: vrh rila

- **Car**
- O: foramen infraorbitale
- I: nares et labium superius

- F: podiže gornju usnu, usnonosno ogledalo, nosno ogledalo i rilo
- I: n. facialis

M. caninus

- Eq
- O: crista facialis
- I: nares et m. orbicularis oris

- **Ru**
- O: tuber faciale
- I: nares

- **Su**
- O: foramen infraorbitale
- I: apertura nasi

- **Car**
- O: foramen infraorbitale
- I: labium superius

- F: širi nozdrve
- I: n. facialis

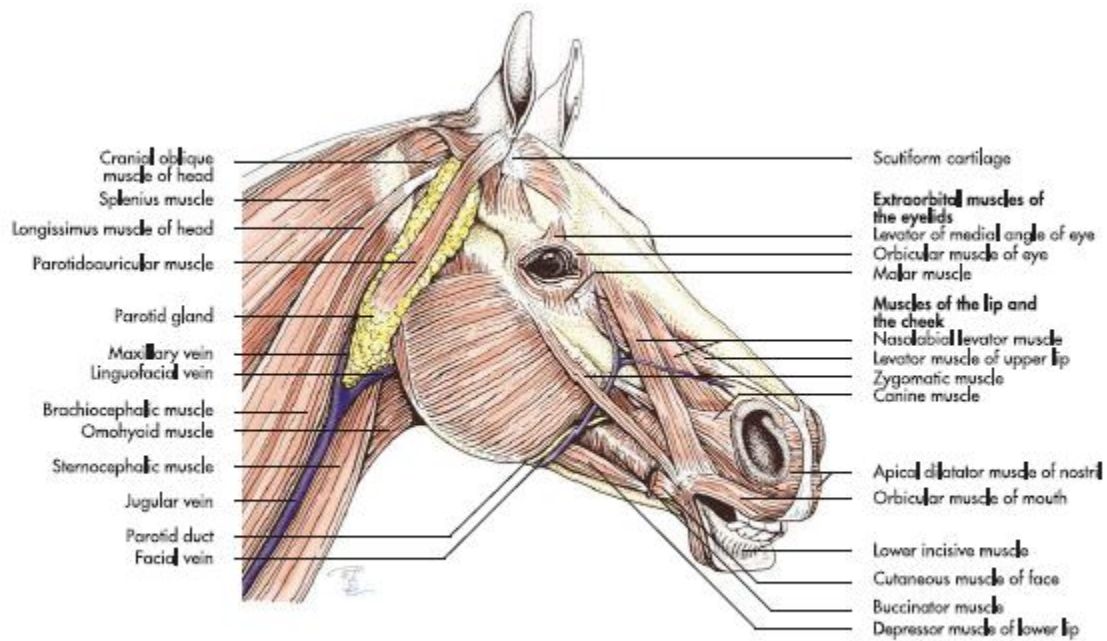
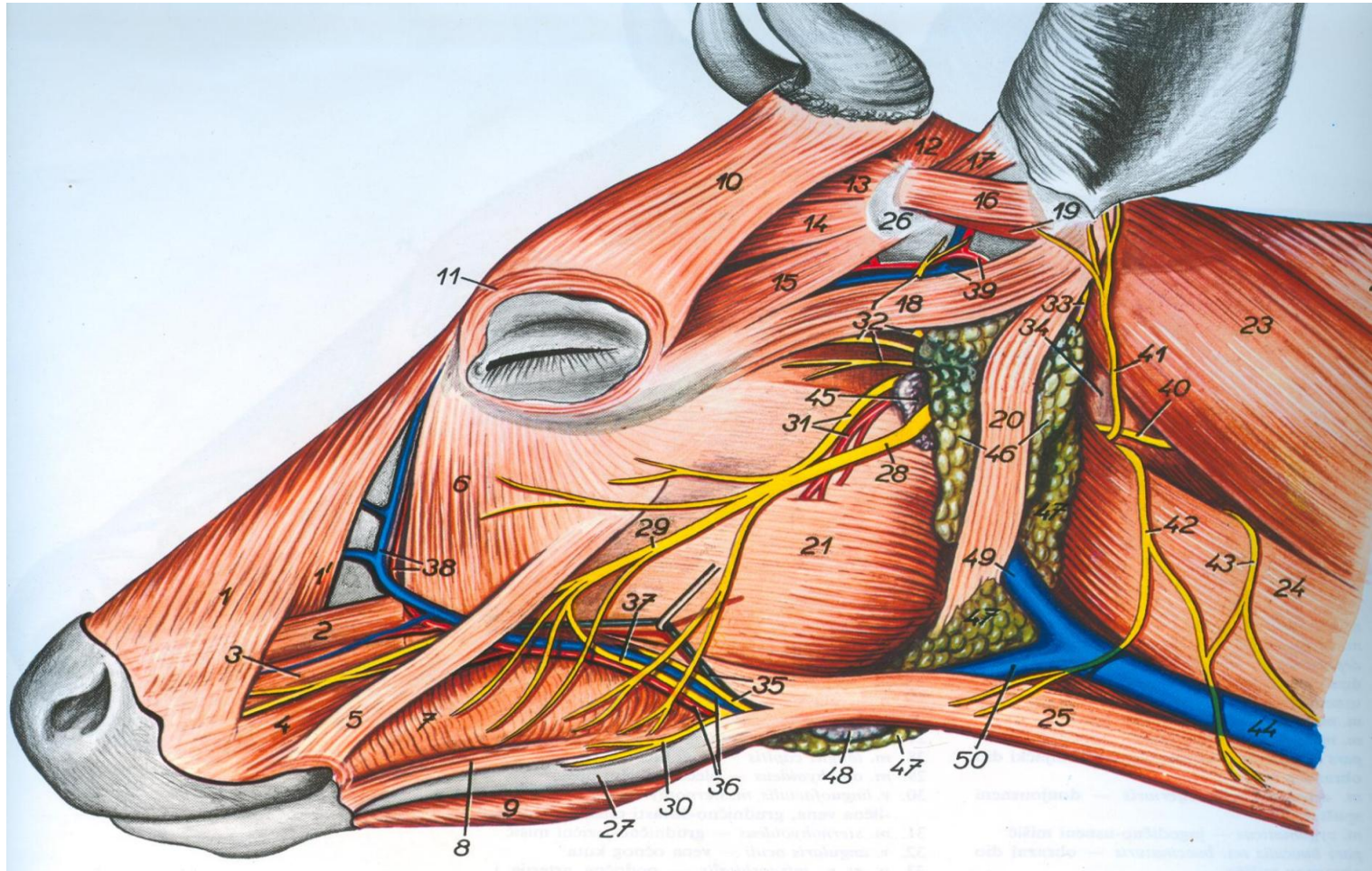


Fig. 3.4 Superficial muscles of the head of the horse (schematic, lateral aspect); fig. based on data from Ghetie, 1954.



M. zygomaticus

- **Eq**
- **O:** crista facialis
- **I:** angulus oris et m. buccinator

- **Ru, su**
- O: arcus zygomaticus
- I: angulus oris et m. buccinator

- **Car**
- O: scutulum
- I: angulus oris et m. buccinator

- F: vuče kaudalno usni ugao, a kod pasa i scutulum
- I: n. facialis

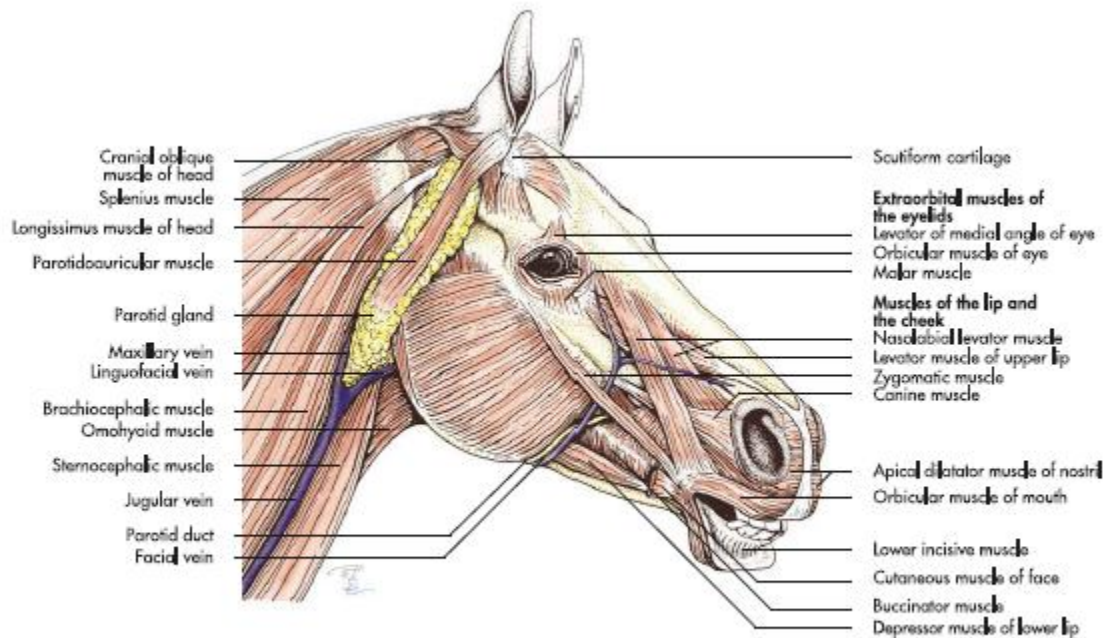
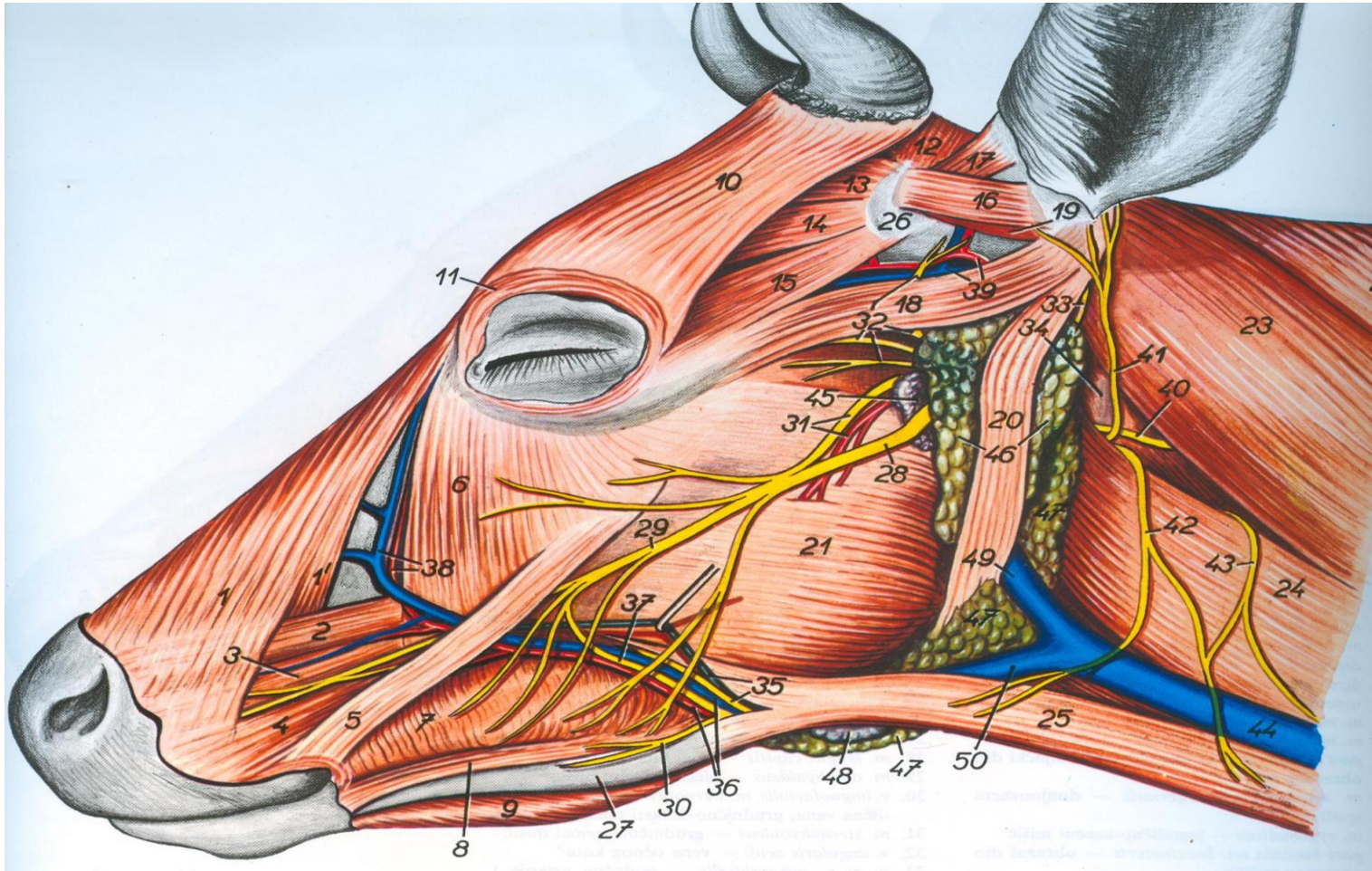


Fig. 3.4 Superficial muscles of the head of the horse (schematic, lateral aspect); fig. based on data from Ghetie, 1954.

M. depressor labii superioris

- Ru, su (m. depressor rostri)
- O: ventralno od m. caninus i m. levator labii superioris
- I: labium superius (Ru), rilo (su)
- F: vuče dole donju usnu odn. rilo
- I: n. facialis



M. depressor labii inferioris

- O: tuber maxillare et processus coronoideus
- I: labium inferius
- F: vuče donju usnu dole i nazad
- I: n. facialis

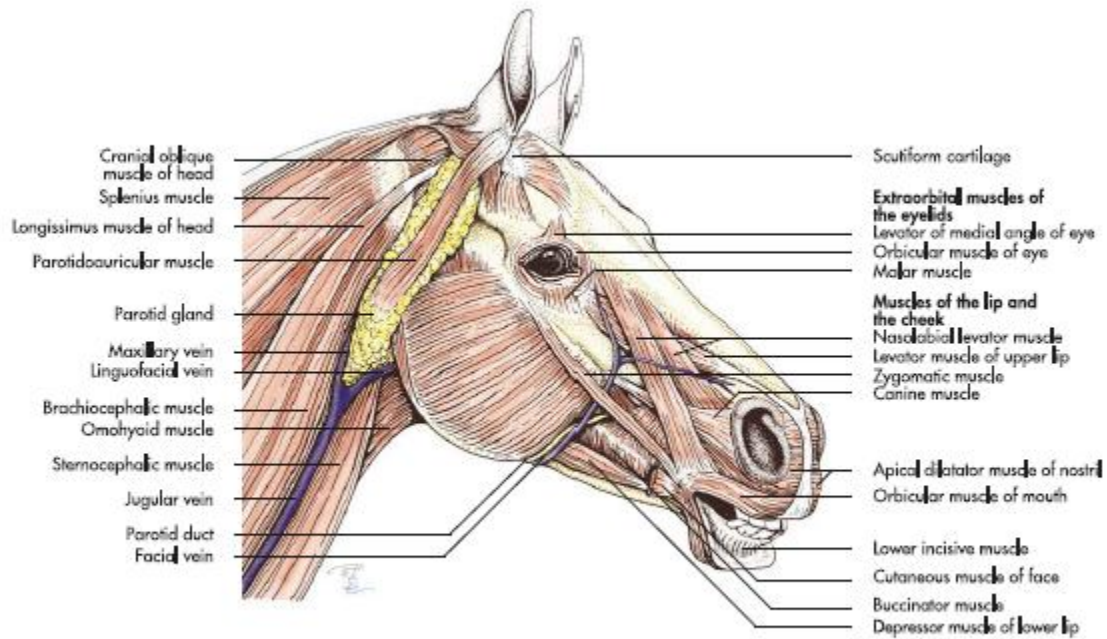


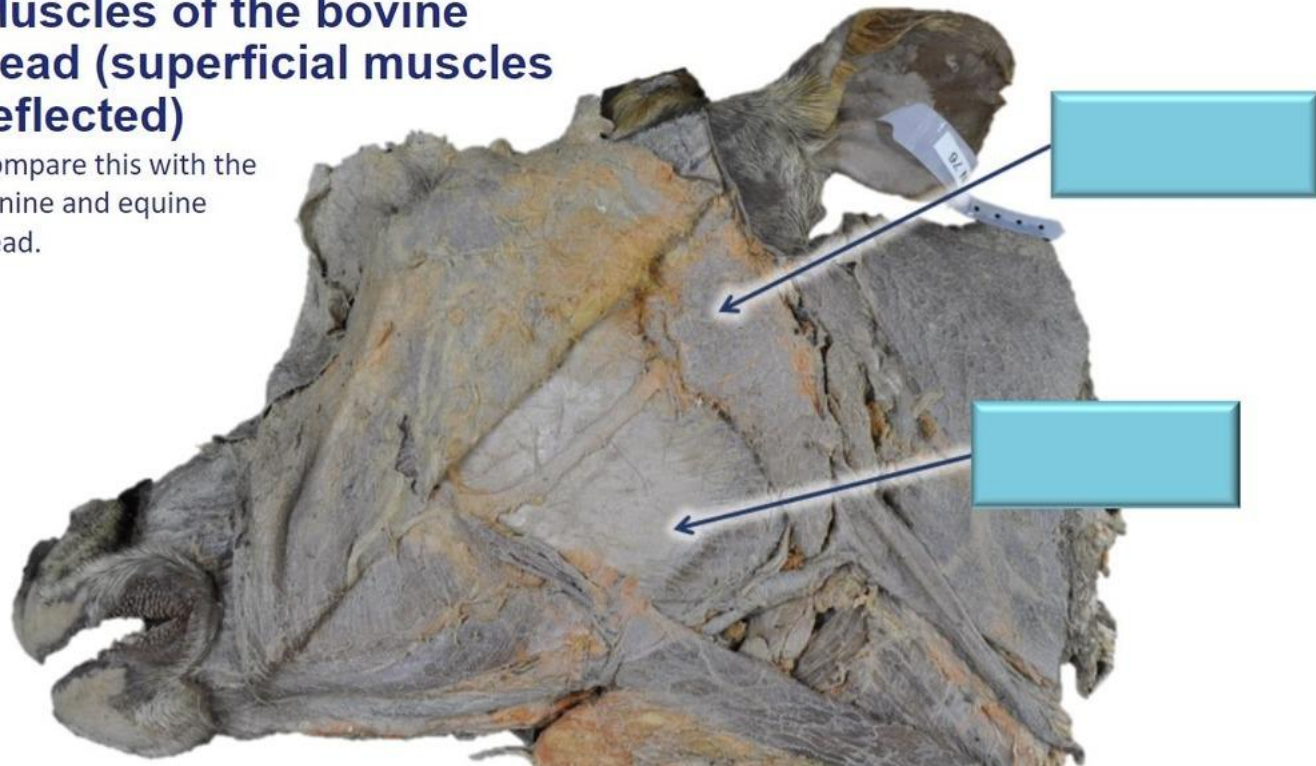
Fig. 3.4 Superficial muscles of the head of the horse (schematic, lateral aspect); fig. based on data from Ghetie, 1954.

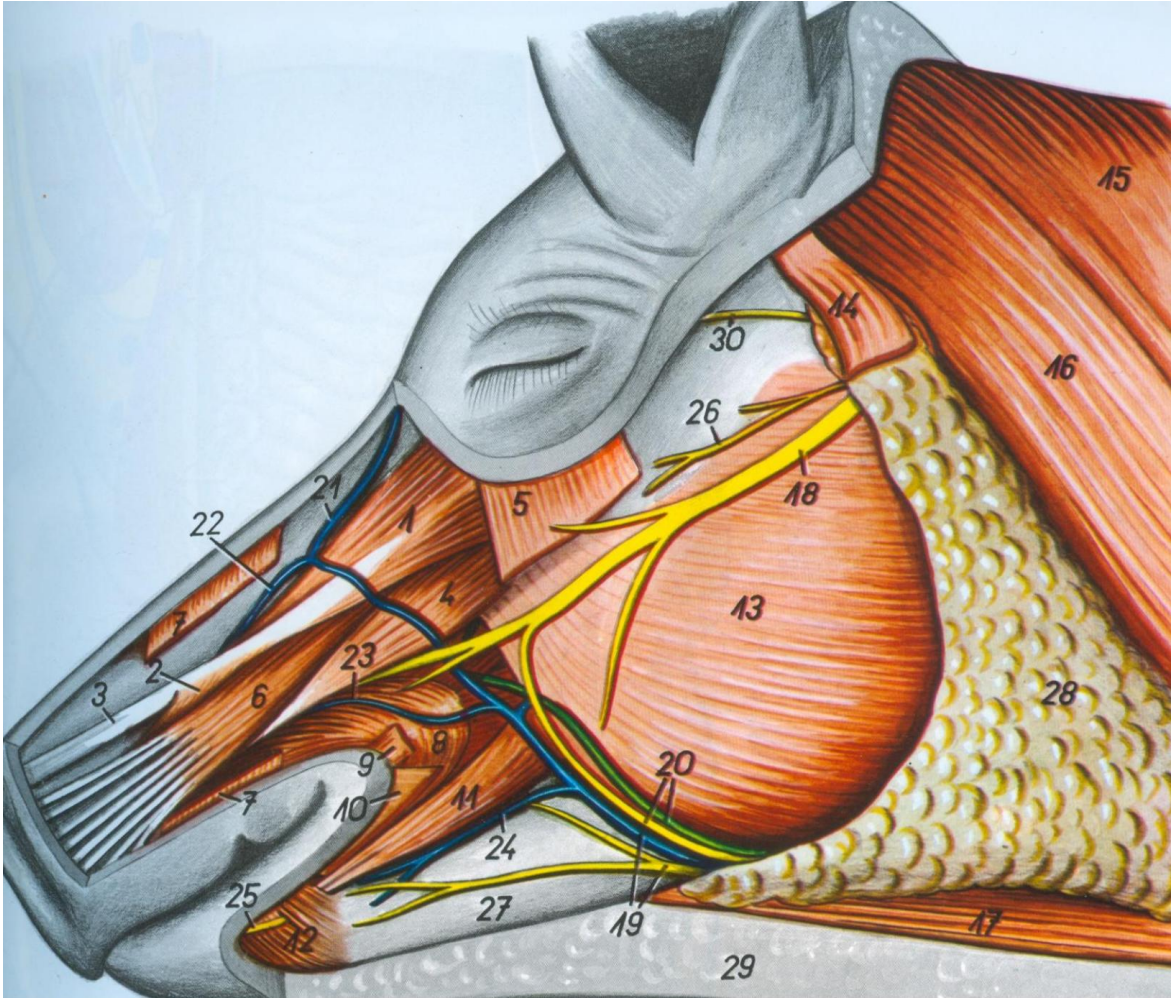
M. mentalis

- O: mandibula
- I: koža brade
- F: zateže i nabira kožu brade
- I: n. mentalis

Muscles of the bovine head (superficial muscles reflected)

Compare this with the canine and equine head.





M. buccinator

- **Pars buccalis**
- **Pars molaris**

Pars buccalis

- O: maxilla (pars dorsalis), diastema (pars ventralis)

Pars molaris

- O: processus coronoideus et processus alveolaris maxillae
- I: angulus oris

- F: pritiska gl. buccales
- I: n. facialis

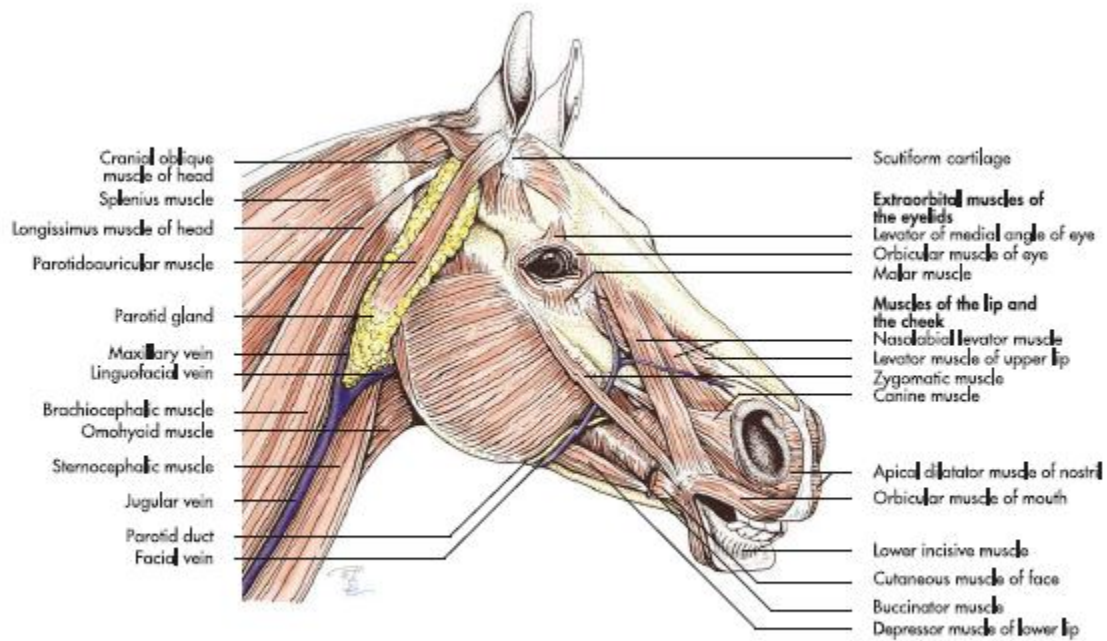
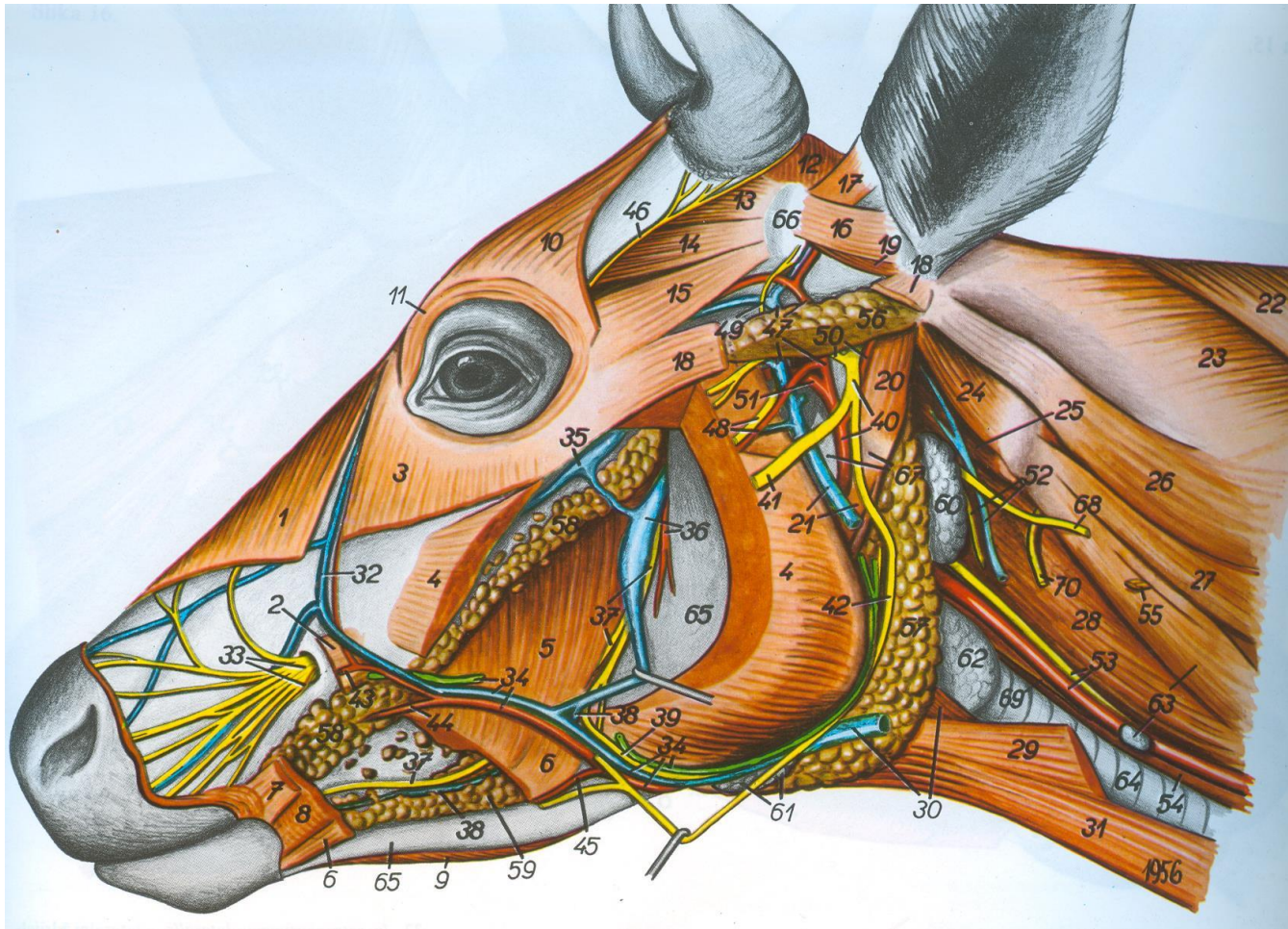


Fig. 3.4 Superficial muscles of the head of the horse (schematic, lateral aspect); fig. based on data from Ghetie, 1954.



Mm. nasales

- Eq, bo
- M. dilatator naris apicalis
- M. dilatator naris medialis
- M. lateralis nasi

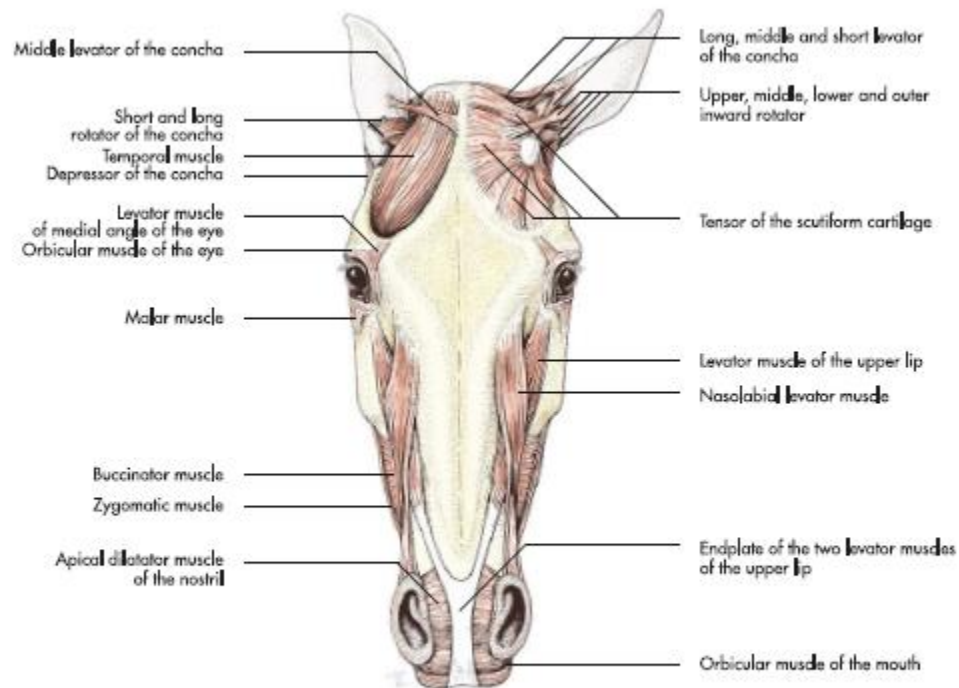


Fig. 3.5 Superficial muscles of the head of the horse (schematic, frontal aspect); fig. based on data from Ghetie, 1971.

Musculi extraorbitales

- **M. orbicularis oculi**
- **M. levator anguli oculi medialis**
- **M. retractor anguli oculi lateralis**
- **M. malaris**

M. orbicularis oculi

- Kružni mišić oka
- **Pars orbitalis**
- **Pars palpebralis**

- F: zatvara oko
- I: n. facialis

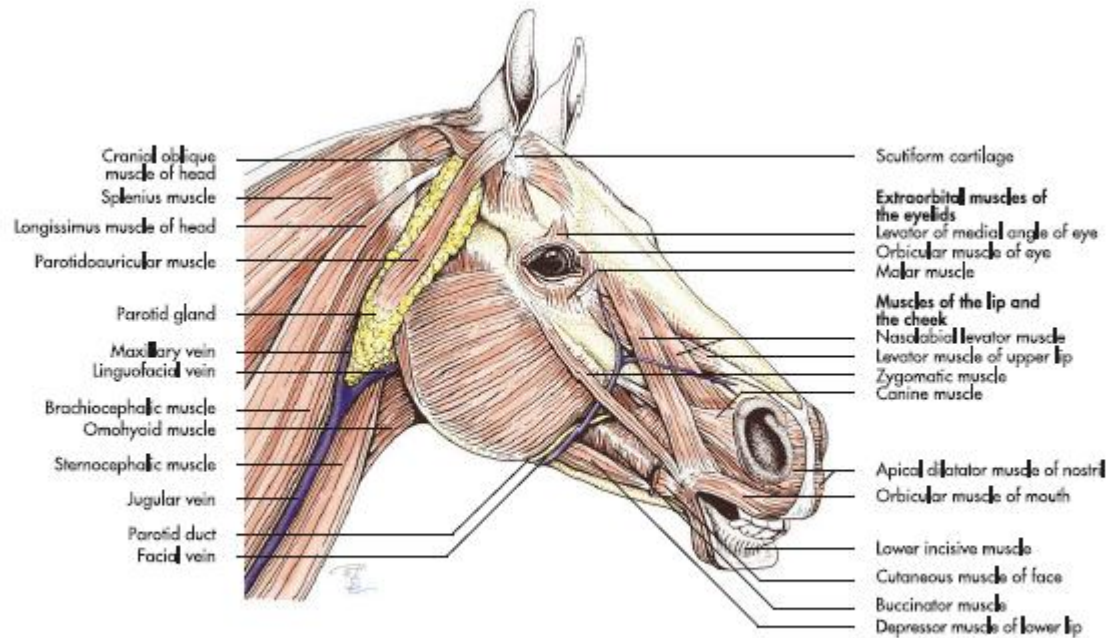


Fig. 3.4 Superficial muscles of the head of the horse (schematic, lateral aspect); fig. based on data from Ghetie, 1954.

M. levator anguli oculi medialis

- O: fascia frontalis
- I: palpebra superior
- Kod **bo**: m. cutaneus frontalis

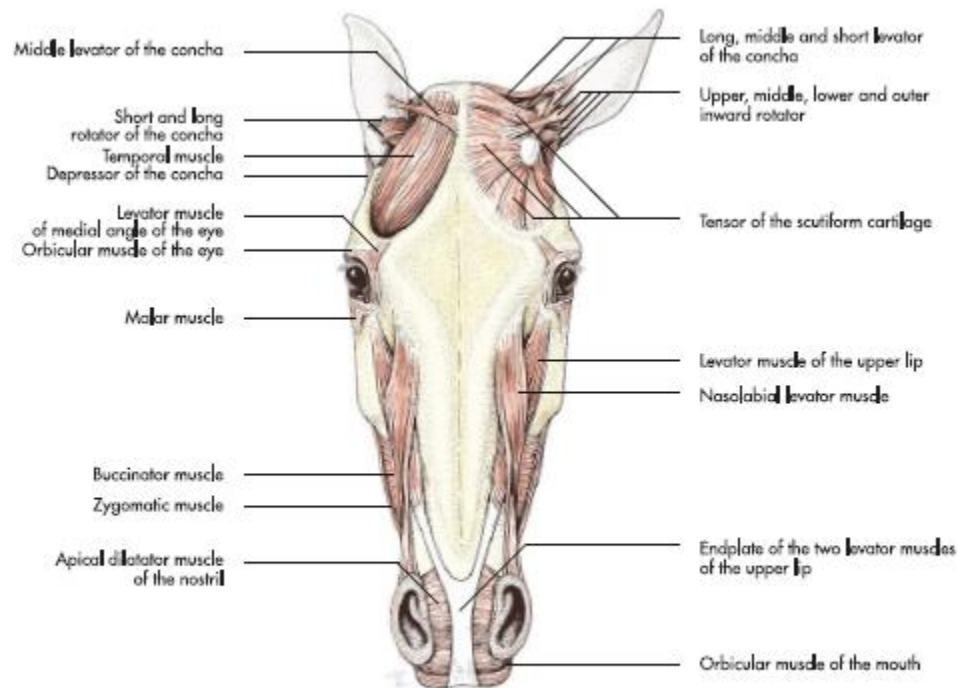


Fig. 3.5 Superficial muscles of the head of the horse (schematic, frontal aspect); fig. based on data from Ghetie, 1971.

M. retractor anguli oculi lateralis

- Samo kod **ca**
- O: fascia temporalis
- I: anguli lateralis oculi
- F: vuče nazad lateralni očni ugao
- I: n. facialis

M. malaris

- O: crista facialis, tuber faciale
- I: palpebra inferior
- F: spušta donji očni kapak
- I: facialis

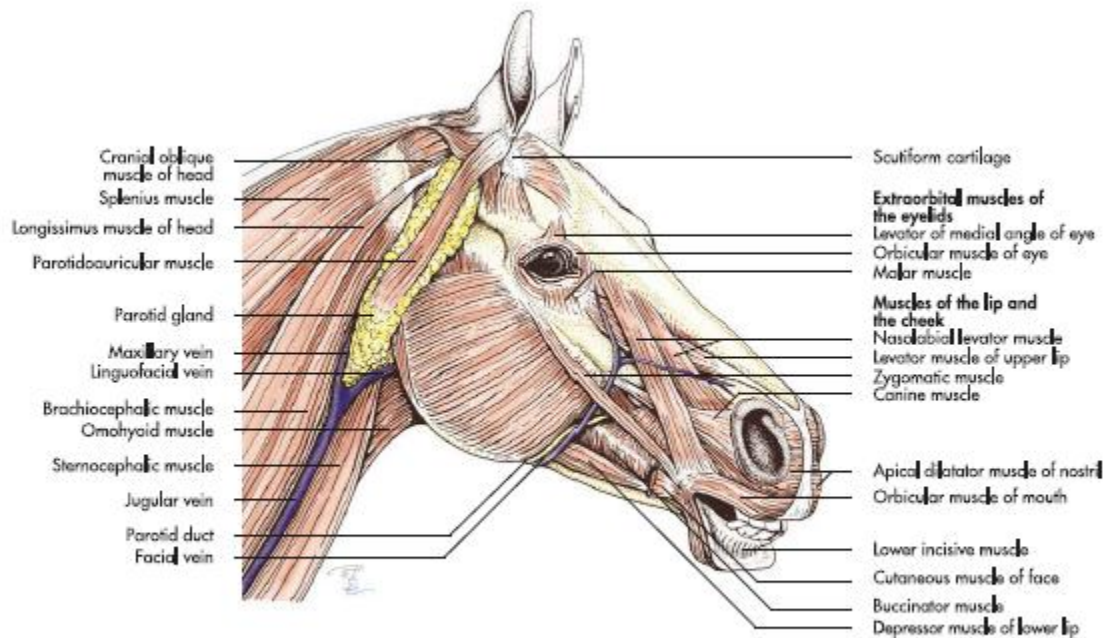


Fig. 3.4 Superficial muscles of the head of the horse (schematic, lateral aspect); fig. based on data from Ghetie, 1954.

Musculi auriculares

- **Mm. auriculares rostrales**
- **Mm. auriculares caudales**
- **Mm. auriculares dorsales**
- **M. auricularis ventralis**

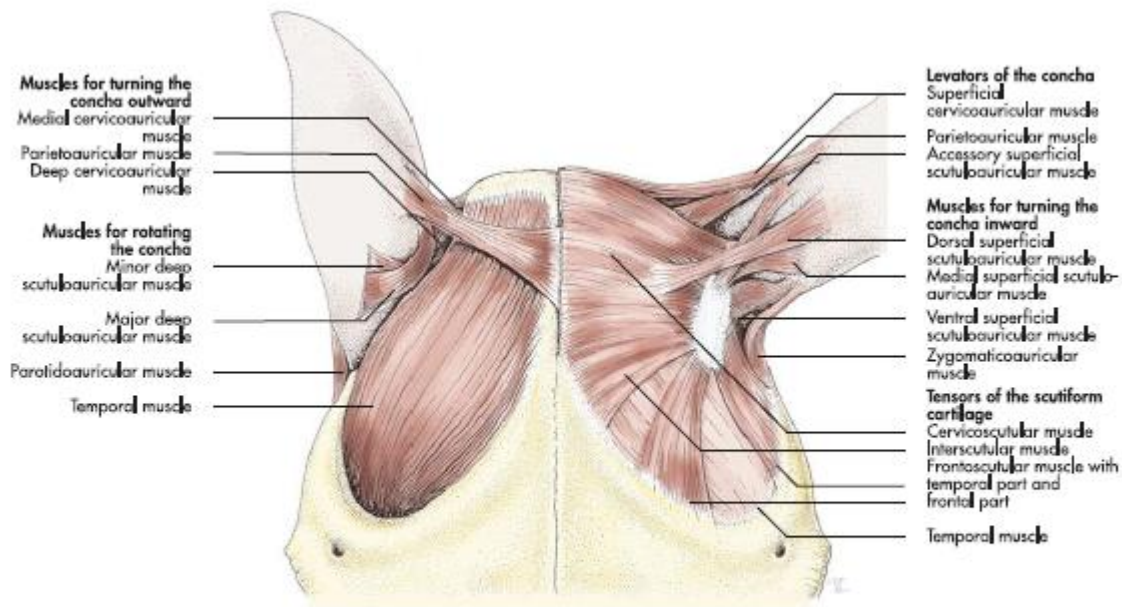


Fig. 3.6 Muscles of the external ear of the horse (schematic, frontal aspect); fig. based on data from Ghetie, 1971.

MIŠÍCI DONJE VILICE

- **M. pterygoideus**
- **M. digastricus**
- **M. temporalis**
- **M. masseter**

M. masseter

- O: crista facialis et arcus zygomaticus
- I: ramus mandibulae (facies lateralis)
- F: privlači donju vilicu gornjoj vilici
- I: n. massetericus

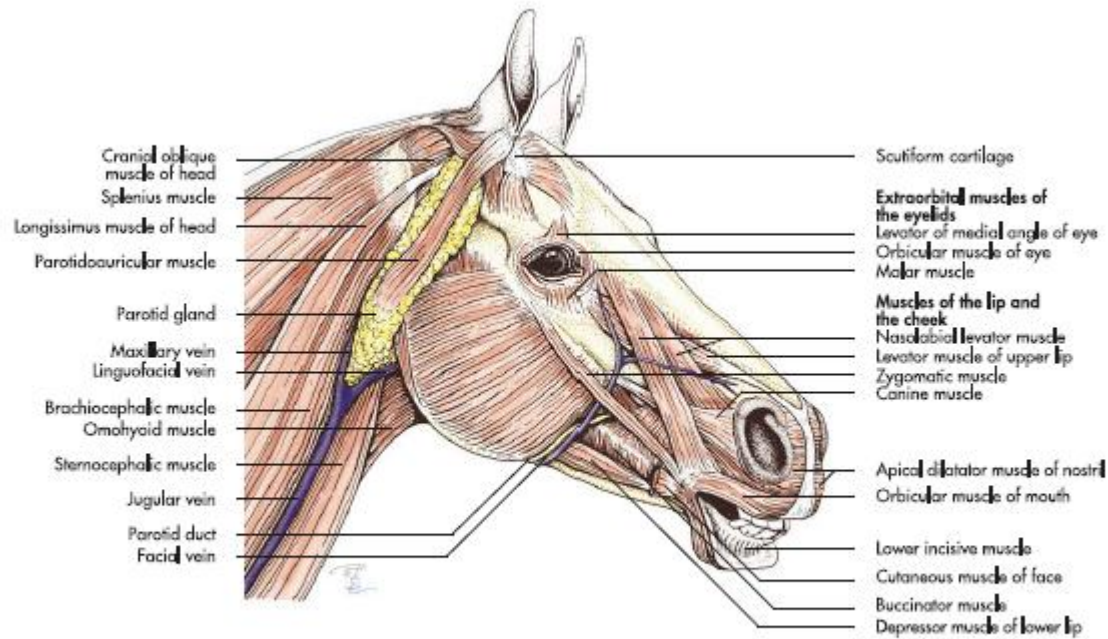


Fig. 3.4 Superficial muscles of the head of the horse (schematic, lateral aspect); fig. based on data from Ghetie, 1954.

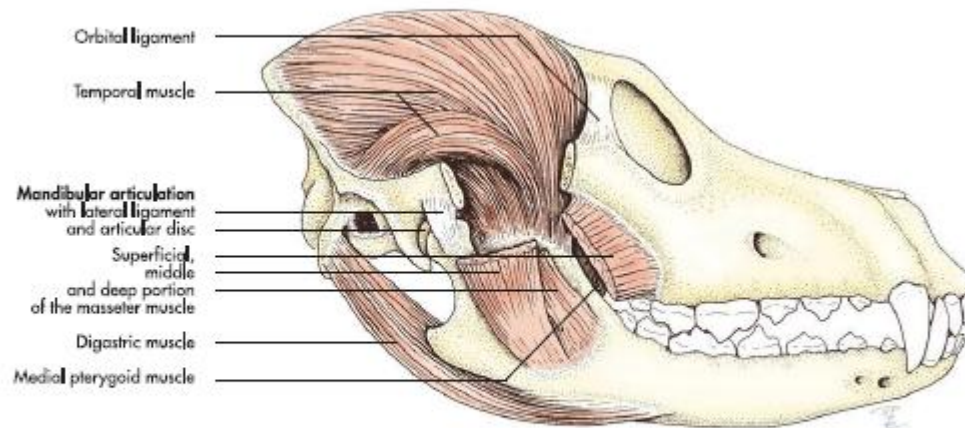


Fig. 3.7 Mandibular muscles of the dog (schematic, lateral aspect, zygomatic arch removed).

M. pterygoideus

- **M. pterygoideus lateralis**
- **M. pterygoideus medialis**

M. pterygoideus lateralis

- O: processus pterygoideus (os sphenoidale), os palatinum
- I: processus condylaris mandibulae

M. pterygoideus medialis

- O: processus pterygoideus (os sphenoidale), os palatinum
- I: ramus mandibulae (facies medialis)

- F: privlači donju vilicu gornjoj vilici
- I: nn. pterygoidei

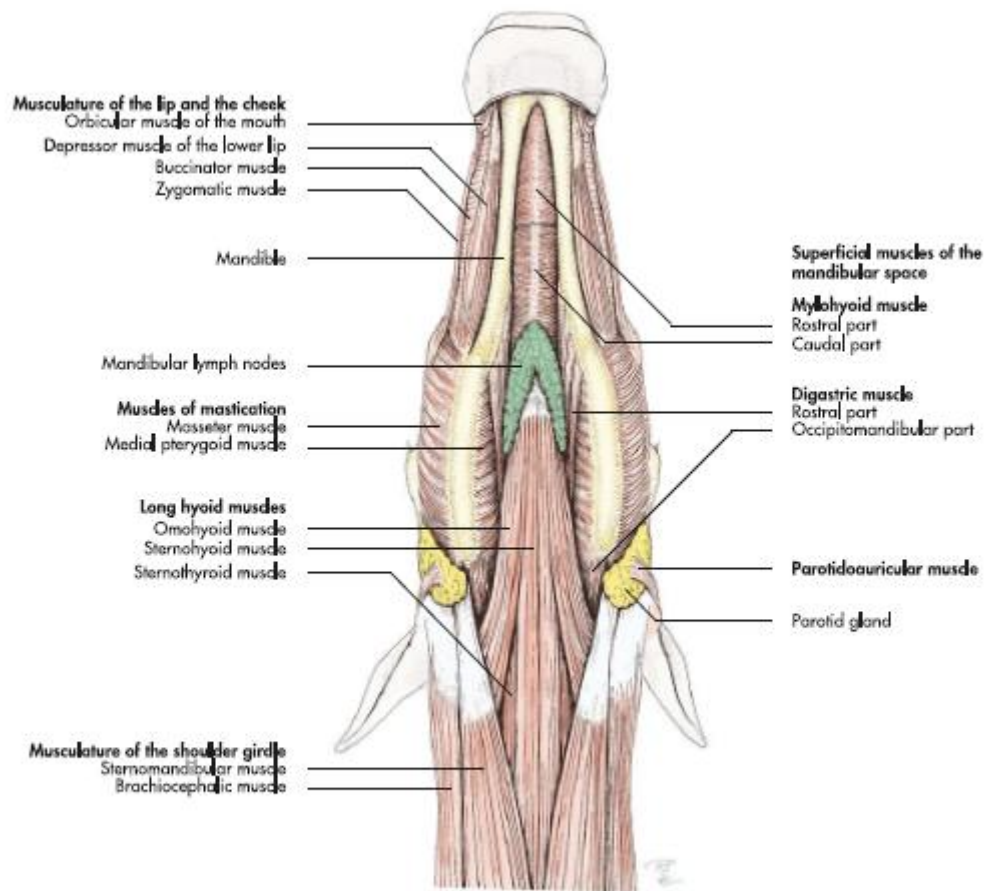


Fig. 3.9 Superficial muscles of the head and cranial neck region of the horse (schematic, ventral aspect); fig. based on data from Popesko, 1979.

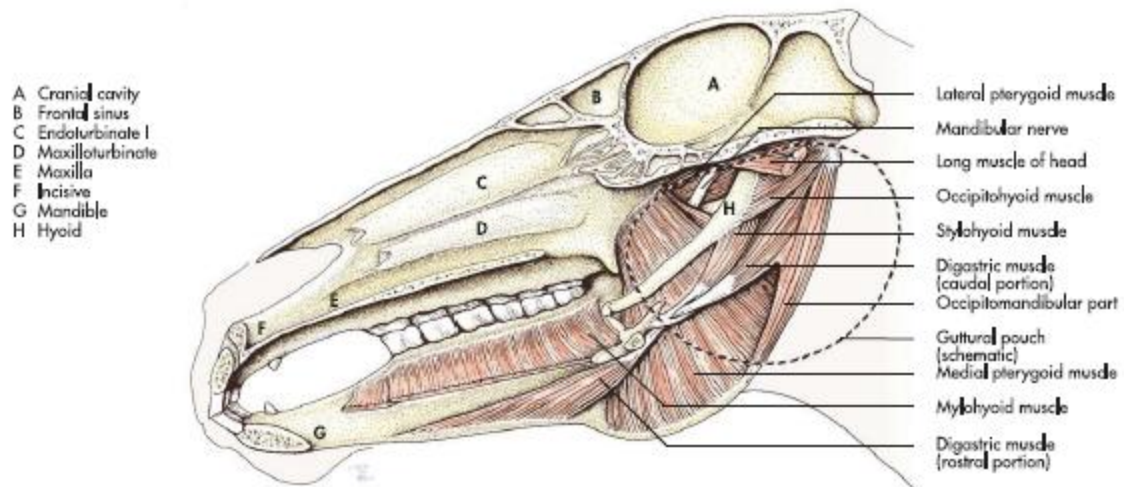


Fig. 3.8 Mandibular muscles of the horse (schematic, medial aspect); fig. based on data from Ellenberger and Baum, 1943.

M. temporalis

- O: fossa temporalis
- I: processus coronoideus mandibulae
- F: privlači donju vilicu prema gornjoj vilici
- I: nn. temporales profundi

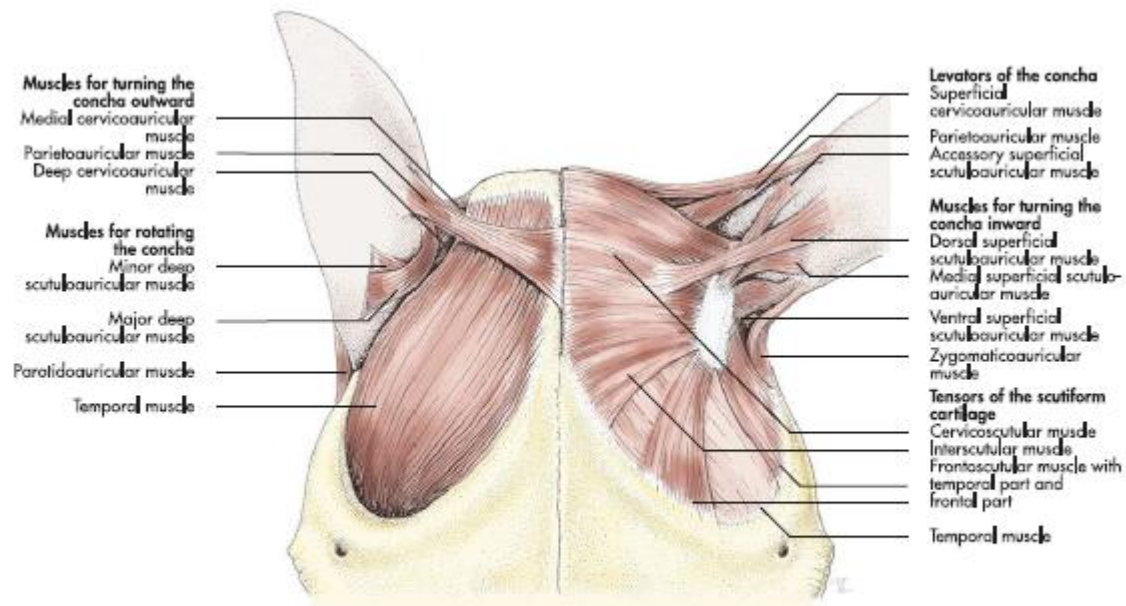


Fig. 3.6 Muscles of the external ear of the horse (schematic, frontal aspect); fig. based on data from Ghetie, 1971.

M. digastricus

- Kod **eq**: venter rostralis et venter caudalis
- O: processus jugularis (paracondylaris)
- I: incisura vasorum facialis → angulus mentalis
- F: vuče donju vilicu dole
- I: n. facialis et n. mylohyoideus

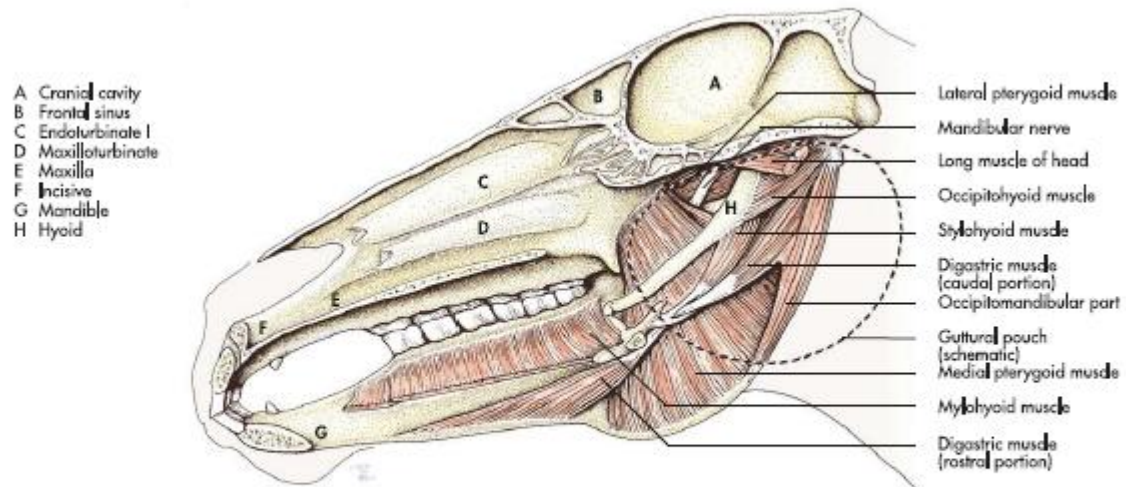


Fig. 3.8 Mandibular muscles of the horse (schematic, medial aspect); fig. based on data from Ellenberger and Baum, 1943.

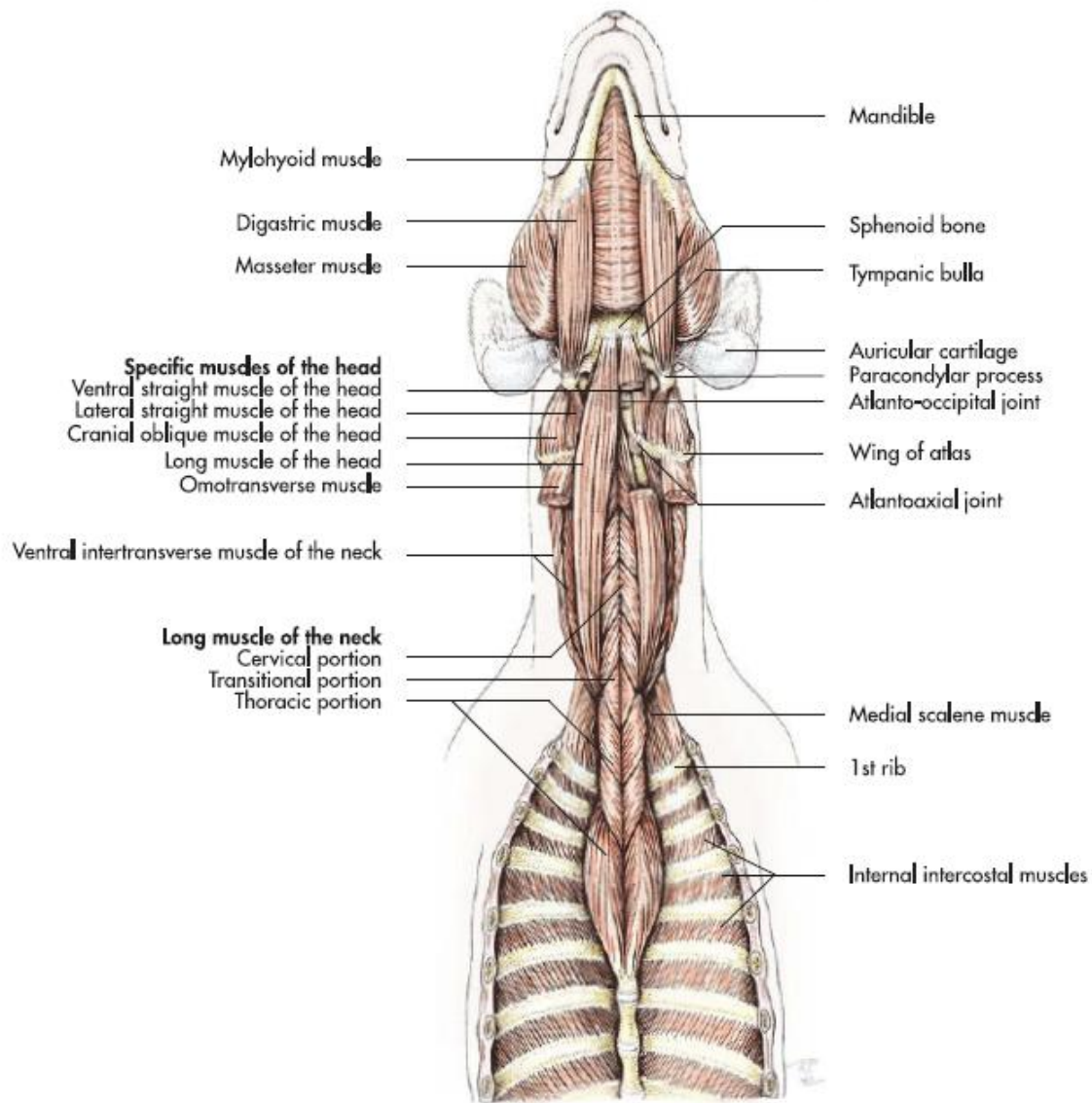


Fig. 3.10 Superficial muscle of the head and deep muscles of the neck of the dog (schematic, ventral aspect).