

MUSCULI COLLI

MUSCULI TRUNCI

- **Mm. colli**
- **Mm. dorsi**
- **Mm. caudae**
- **Mm. thoracis**
- **Mm. abdominis**

FASCIAE

- **Fascia cervicalis superficialis**
- **Fascia cervicalis profunda**

M. cutaneus colli

- O: manubrium sterni (**eq**), ventralna strana vrata (**bo**)

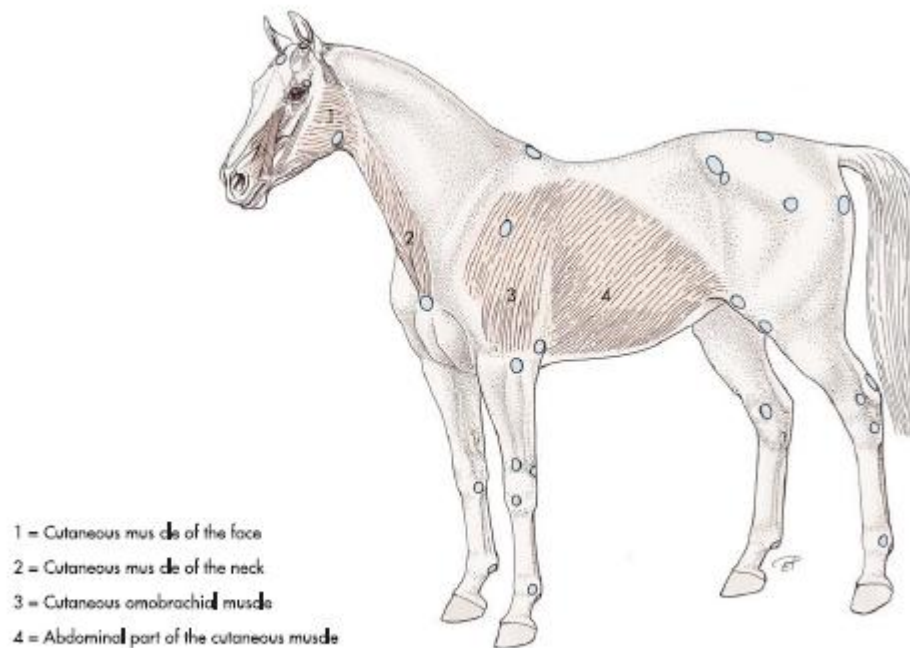


Fig. 3.3 Cutaneous muscles of the head, the neck and the back and topography of synovial cavities of the horse (lateral aspect).

- Sulcus s. fossa v. jugularis

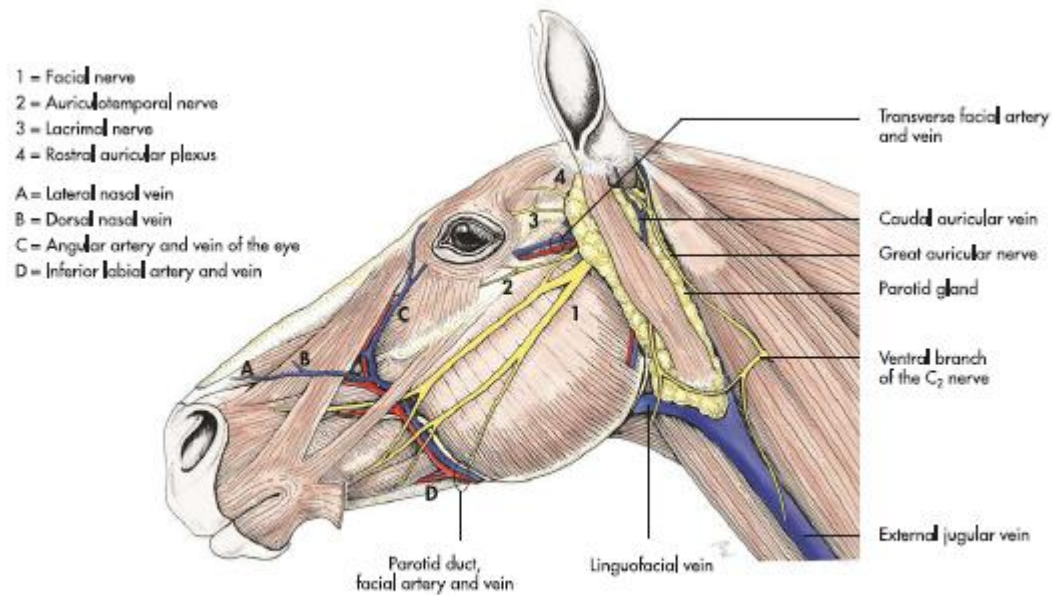
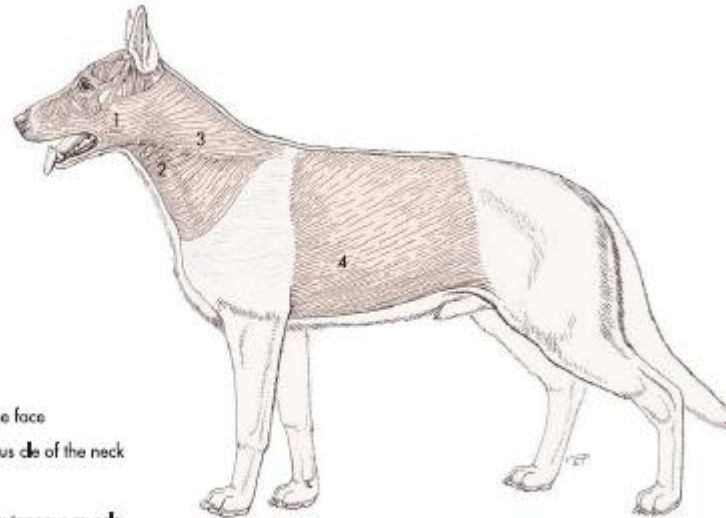


Fig. 20.8 Topography of the superficial organs and structures of the head in the horse (schematic).

- Nema kod **Car**
- **M. sphincter colli primitivus**



- 1 = Cutaneous muscle of the face
- 2 = Superficial sphincter muscle of the neck
- 3 = Larynx
- 4 = Abdominal part of the cutaneous muscle

Fig. 3.2 Cutaneous muscles of the head, the neck and the back of the dog (lateral aspect).

- F: zateže kožu na ventralnoj strani vrata
- I: n. facialis

MIŠIĆI VENTRALNOG DELA VRATA

- **M. omohyoideus**
- **M. sternohyoideus**
- **M. sternocephalicus**
- **M. sternothyroideus**
- **M. brachiocephalicus**
- **M. omotransversarius**

- **Mm. scaleni**
- **M. longus colli**
- **M. longus capitis**
- **M. rectus capitis lateralis**
- **M. rectus capitis ventralis**
- **M. intertransversarii cervicis**

M. brachiocephalicus

- Bočno na vratu
- **M. cleidocephalicus**
- **M. cleidobrachialis**

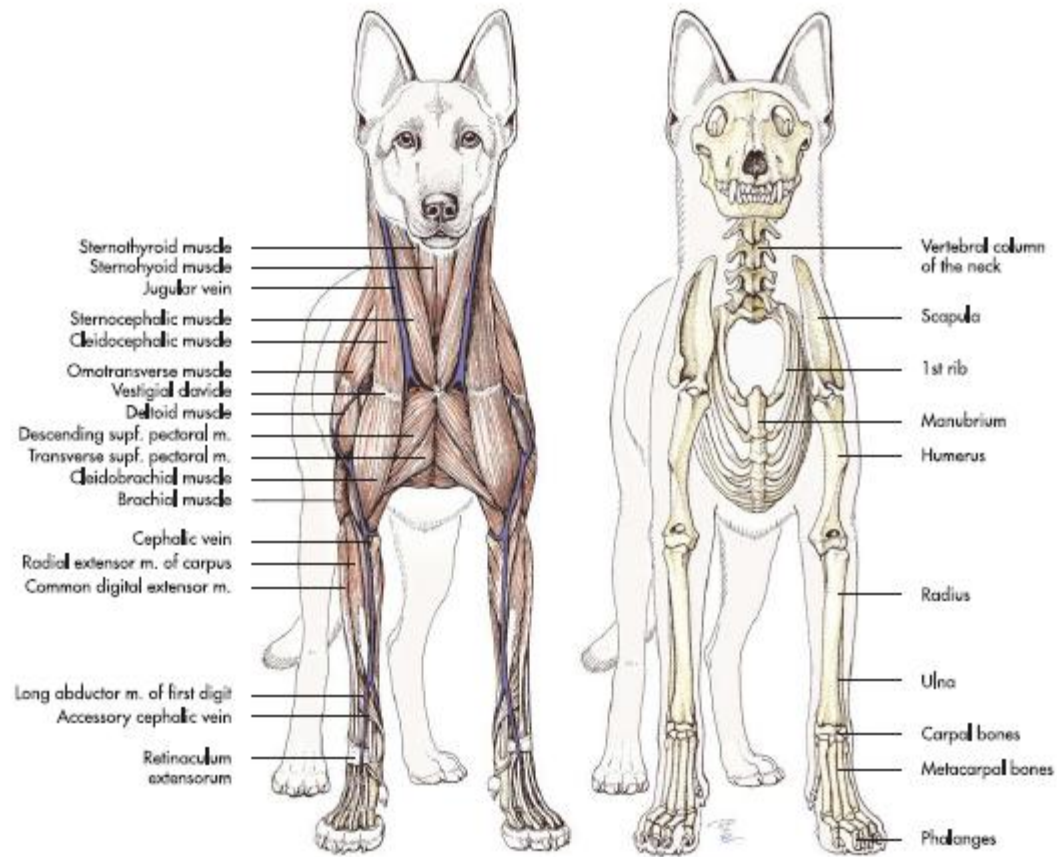
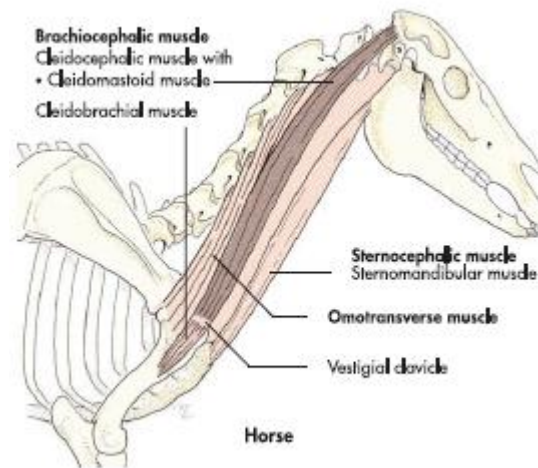
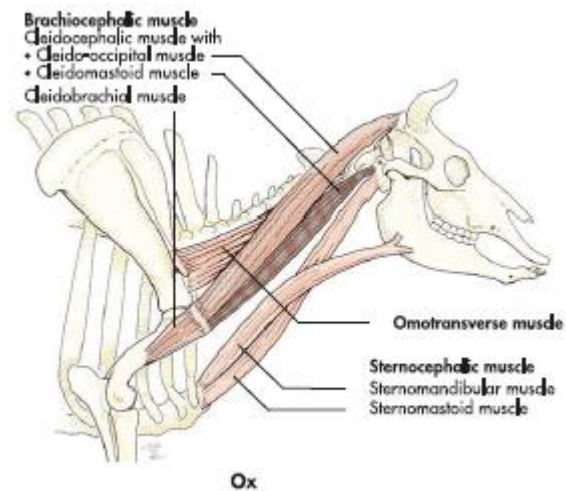


Fig. 4.79 Superficial cervical, thoracic and intrinsic musculature of the shoulder and skeleton of the dog (schematic, cranial aspect).

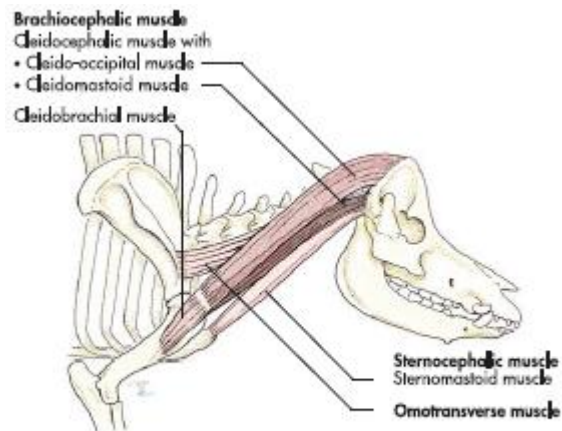
- **Eq**
- M. cleidocephalicus:
- M. cleidotransversarius (processus transversus C₂ – C₄)
- M. cleidomastoideus (processus mastoideus, os occipitale)



- **Ru**
- M. cleidocephalicus:
- M. cleidooccipitalis (os occipitale, lig. nuchae)
- M. cleidomastoideus (proc. mastoideus, m. longus capitis)

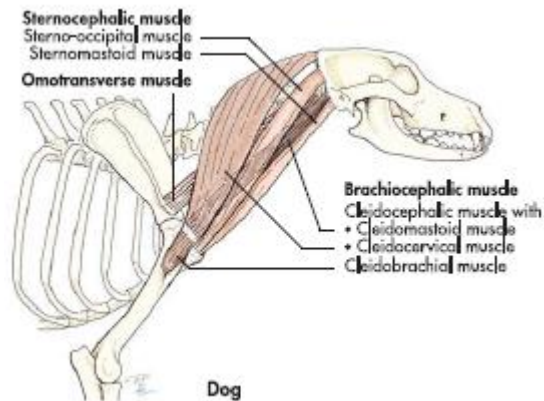


- **Su**
- M. cleidocephalicus:
- M. cleidooccipitalis (os occipitale)
- M. cleidomastoideus (processus mastoideus)



Pig

- Car
- M. cleidocephalicus:
- M. cleidocervicalis (lig. nuchae, crista nuchae)
- M. cleidomastoideus (processus mastoideus)



- F: predvodi prednji ekstremitet, ekstenzor ramenog zgloba
- I: n. accessorius et axillaris

M. omotransversarius

- O: ala atlantis, processus transversus (axis)
- I: spina scapulae (pars distalis), acromion
- F: predvodi prednji ekstremitet
- I: n. accessorius

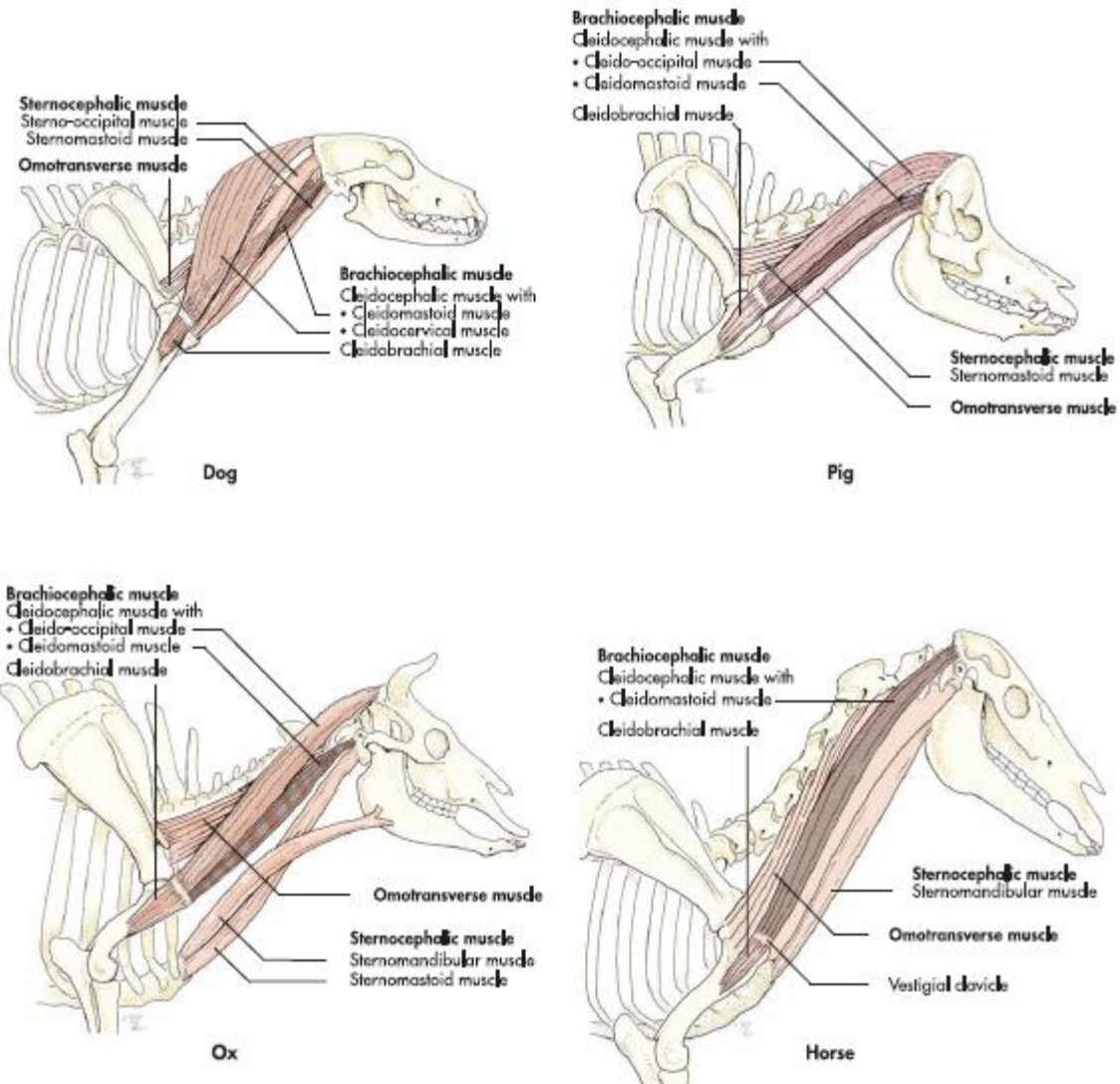


Fig. 4.72 Sternocleidomastoid muscle of the domestic mammals (schematic); fig. based on data from Ellenberger and Baum, 1943.

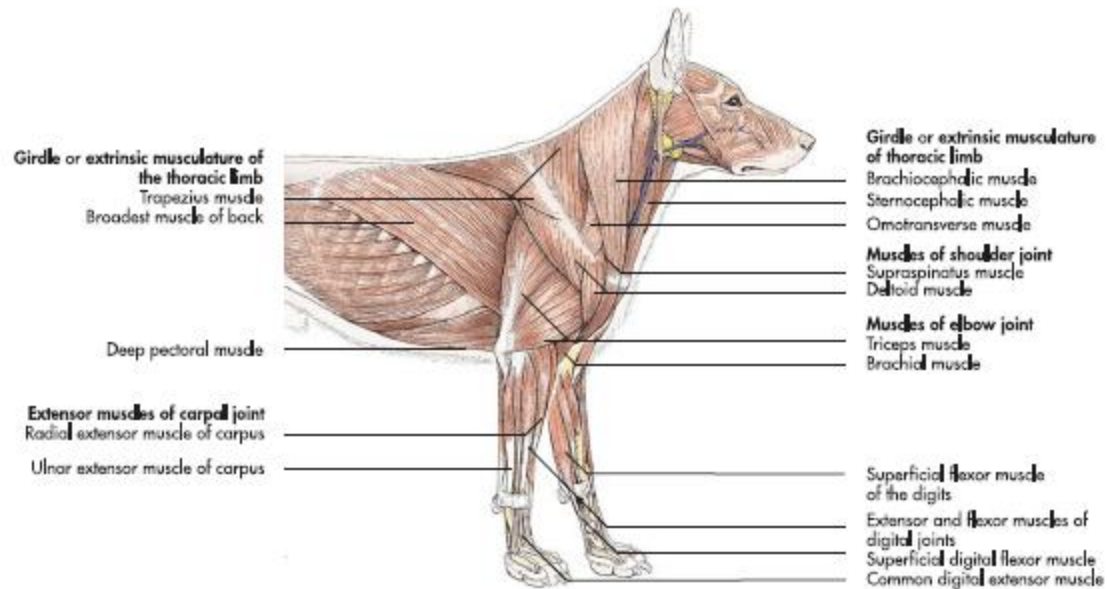


Fig. 4.73 Superficial layers of the extrinsic and intrinsic musculature of the thoracic limb of the dog (schematic).

M. sternocephalicus

- **Eq (m. sternomandibularis)**
- O: manubrium sterni
- I: ramus mandibulae

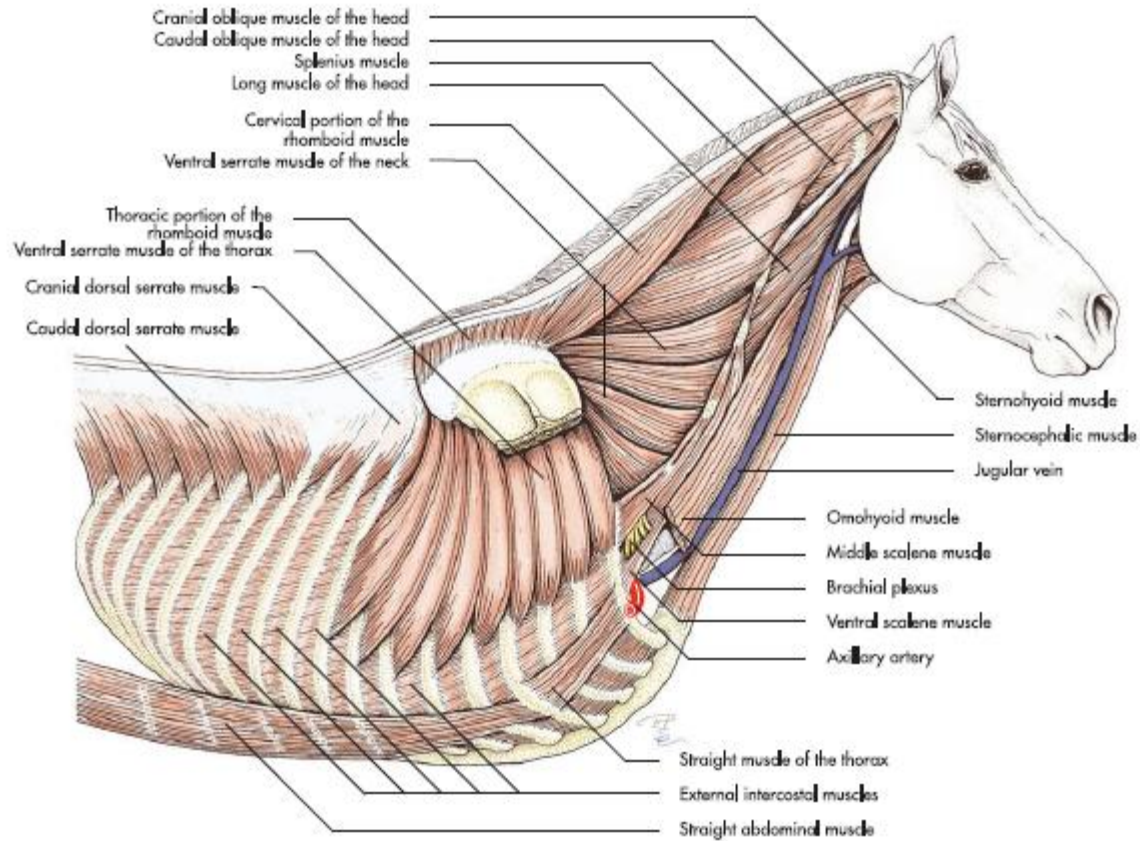
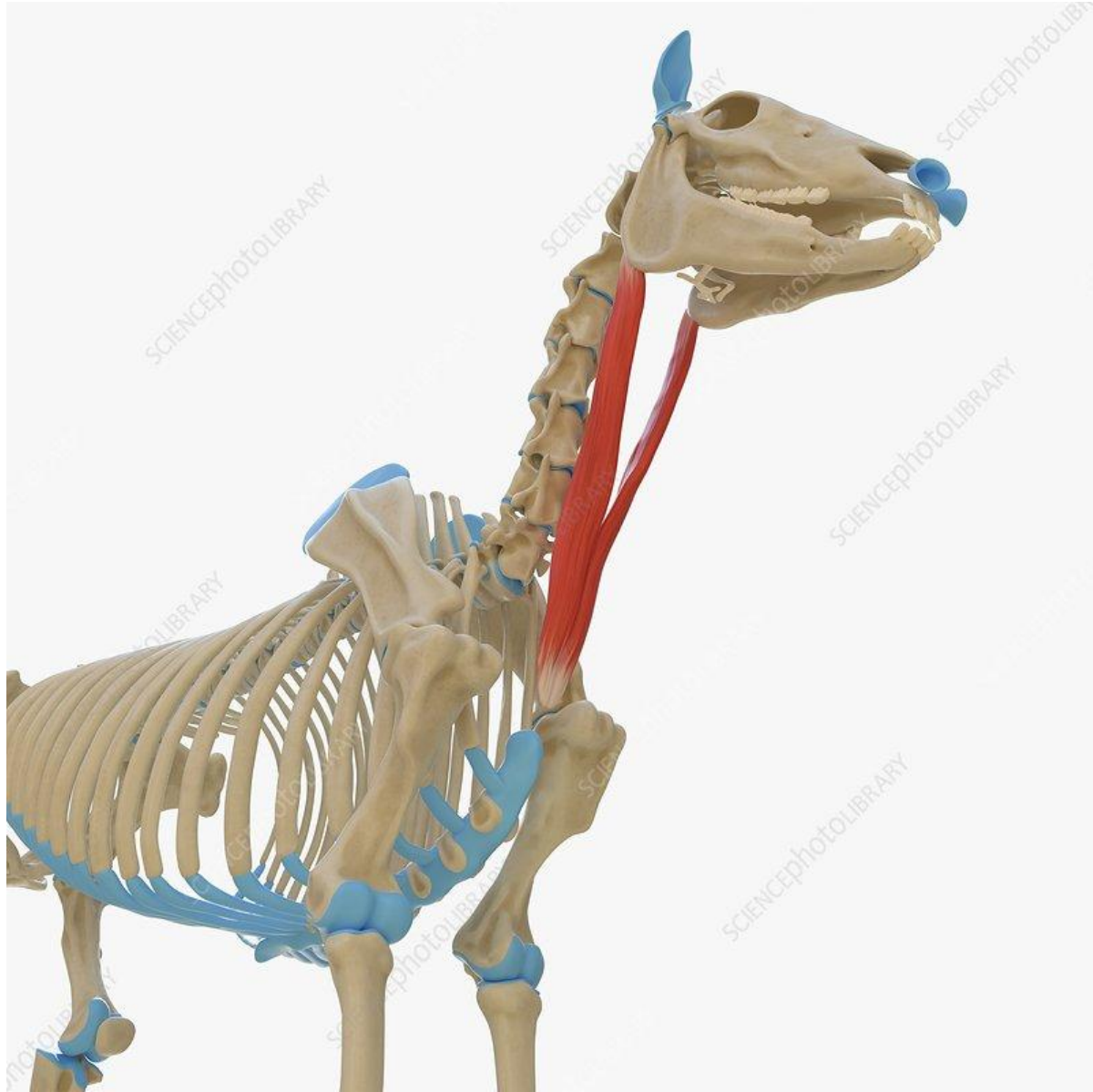


Fig. 3.12 Superficial muscles of the trunk of the horse (schematic); fig. based on data from Ghetie, 1954.



- **Ru**
- M. sternomandibularis
- M. sternomastoideus

- **M. sternomandibularis**
- O: manubrium sterni, prima costae
- I: m. masseter

- **M. sternomastoideus**
- O: manubrium sterni
- I: processus mastoideus

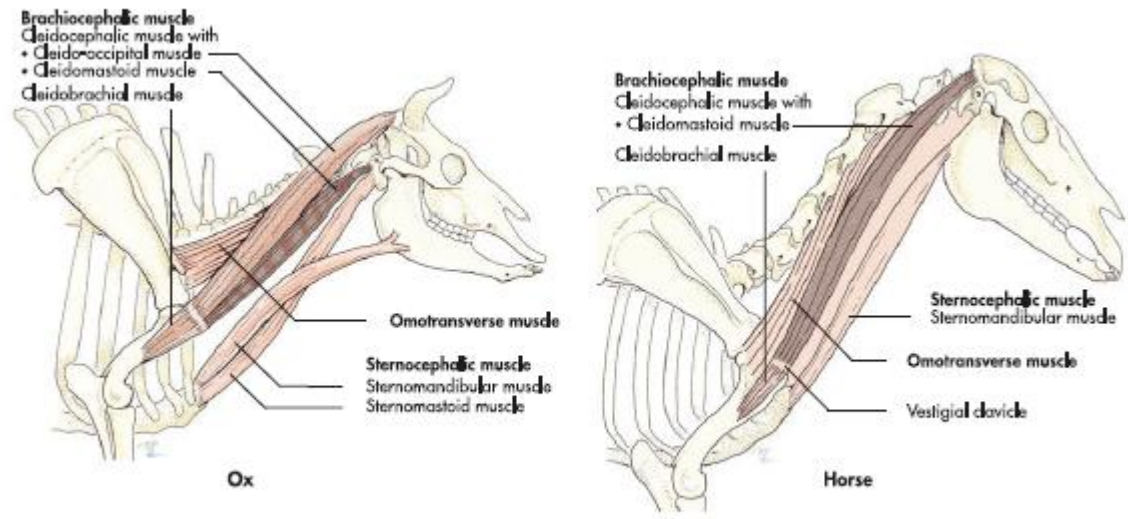
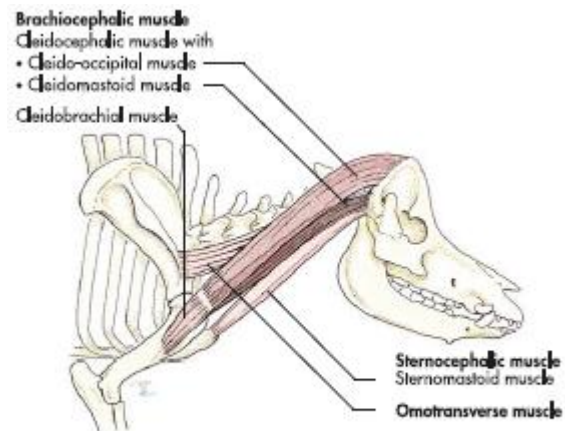


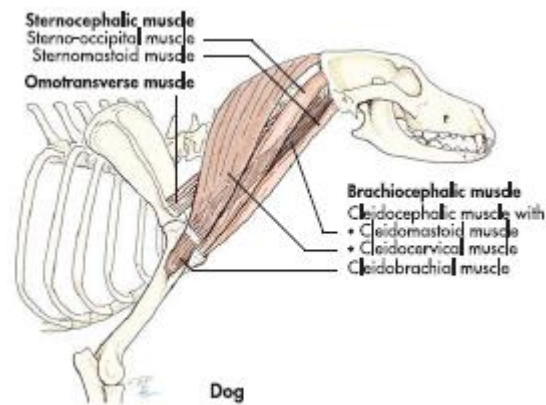
Fig. 4.72 Sternodeidomastoid muscle of the domestic mammals (schematic); fig. based on data from Ellenberger and Baum, 1943.

- **Su**
- M. sternomastoideus
- O: sternum
- I: processus mastoideus



Fig

- Car
- M. sternomastoideus
- M. sternooccipitalis



- F: savija vrat i glavu nadole
- I: nn. cervicales

M. sternohyoideus

- O: manubrium sterni, prima costae (**Car**)
- I: basihyoideum
- F: povlači jezičnu kost i koren jezika kaudalno
- I: n. cervicalis I et II

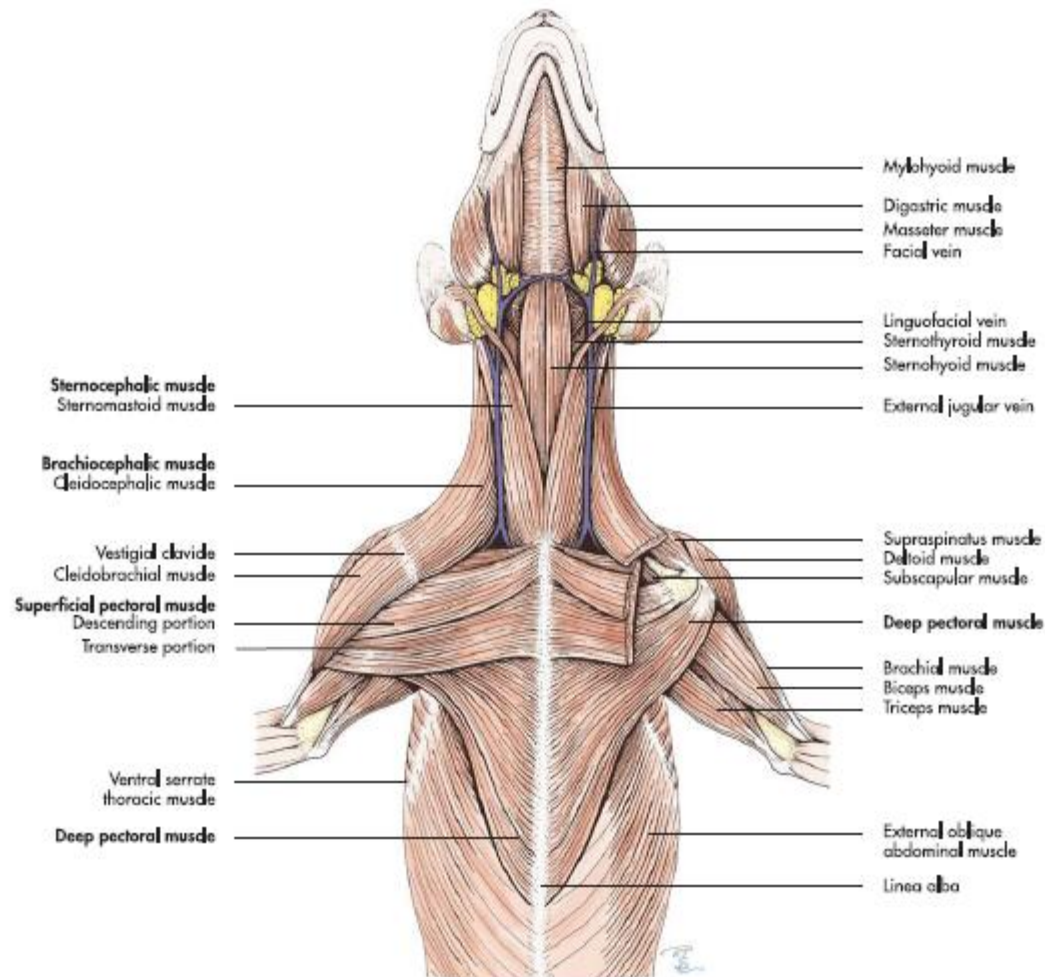


Fig. 4.78 Pectoral and ventral cervical muscles of the dog (schematic, ventral aspect); fig. based on data from Anderson and Anderson, 1994.

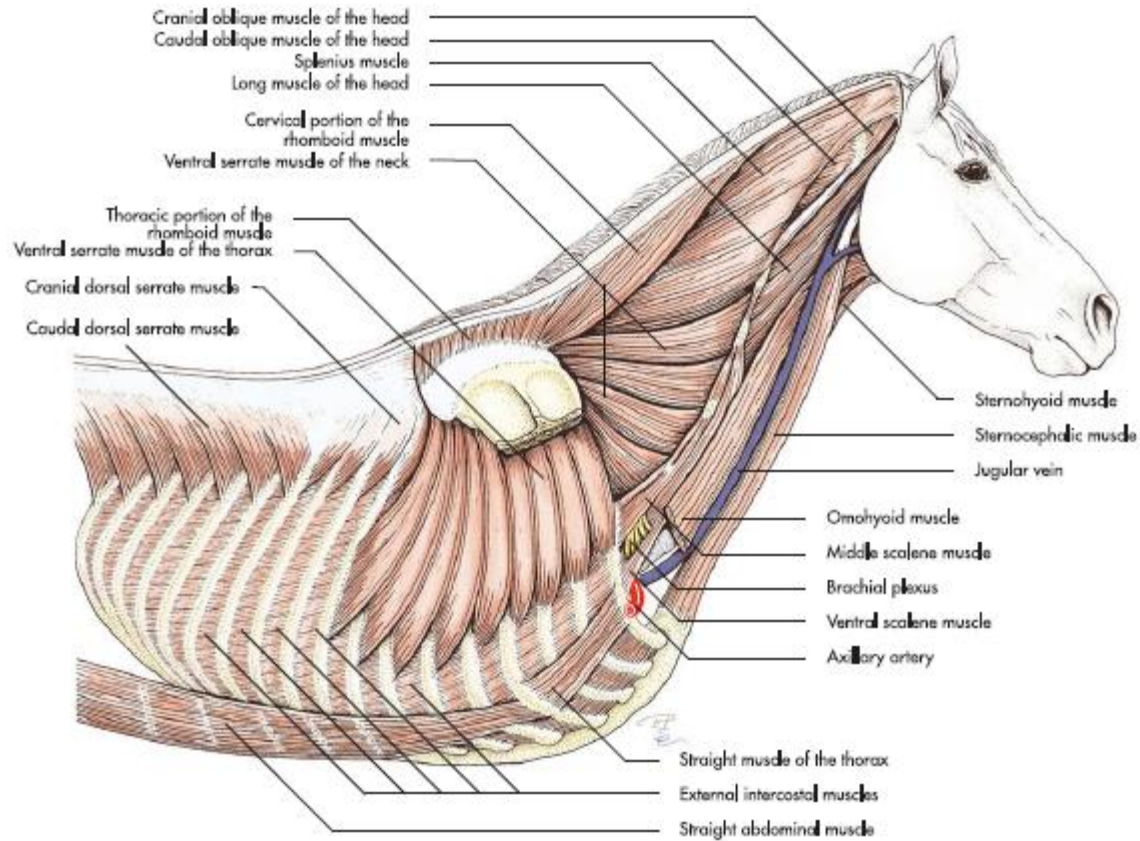


Fig. 3.12 Superficial muscles of the trunk of the horse (schematic); fig. based on data from Ghetie, 1954.

M. sternothyroideus

- O: manubrium sterni
- I: cartilago thyroidea (larynx)
- F: povlači jezičnu kost, koren jezika i grkljan kaudalno
- I: n. cervicalis I et II

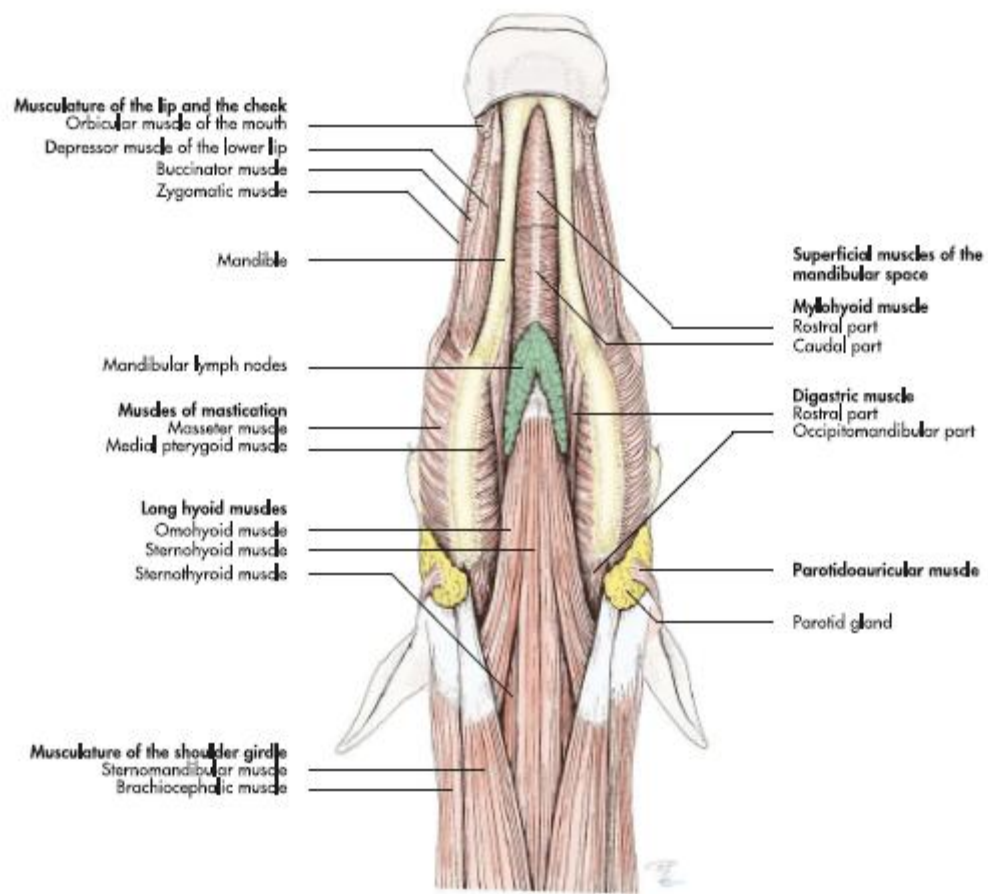


Fig. 3.9 Superficial muscles of the head and cranial neck region of the horse (schematic, ventral aspect); fig. based on data from Popesko, 1979.

M. omohyoideus

- O: fascia subscapularis (**eq, su**), fascia cervicalis profunda (**bo**)
- I: basihyoideum
- F: povlači kaudalno jezičnu kost i koren jezika
- I: n. cervicalis I

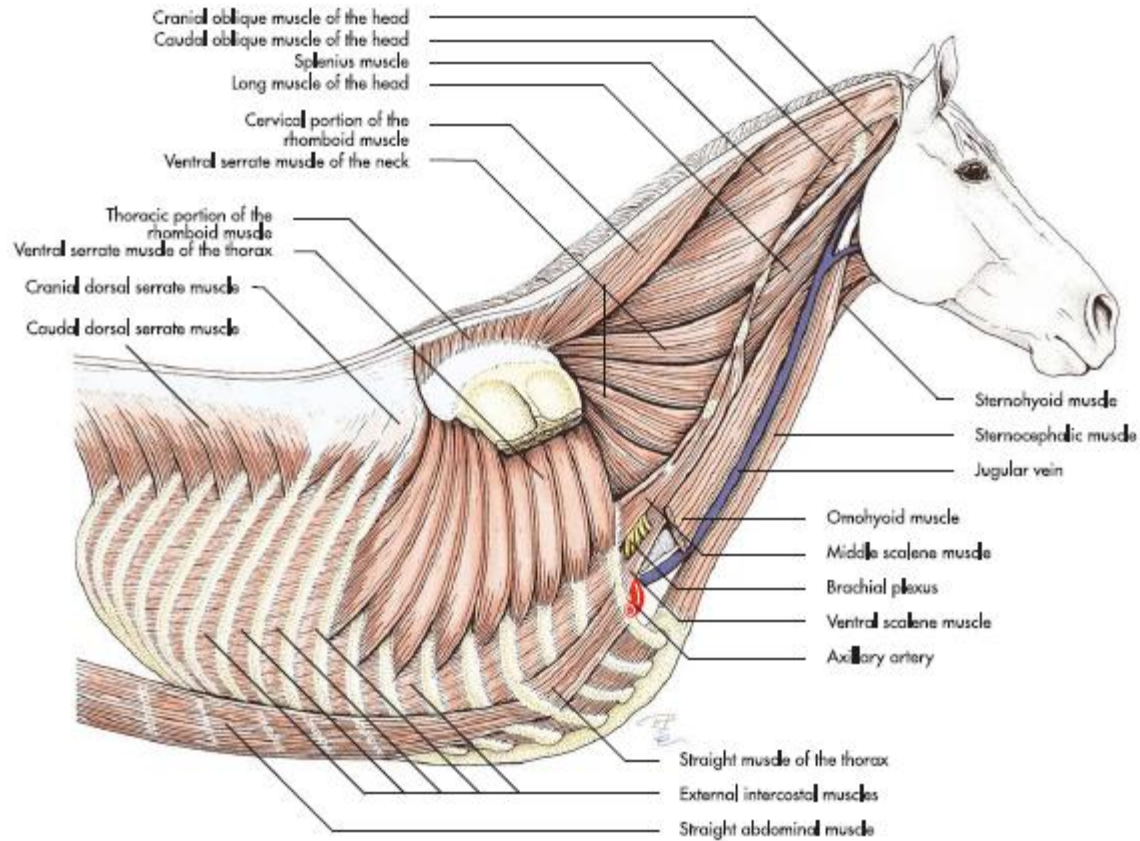


Fig. 3.12 Superficial muscles of the trunk of the horse (schematic); fig. based on data from Ghetie, 1954.

Mm. scaleni

- **Eq**
- **M. scalenus medius** (pars ventralis et dorsalis)
- O: prima costae
- I: processus transversus C₄ – C₆ (C₇)

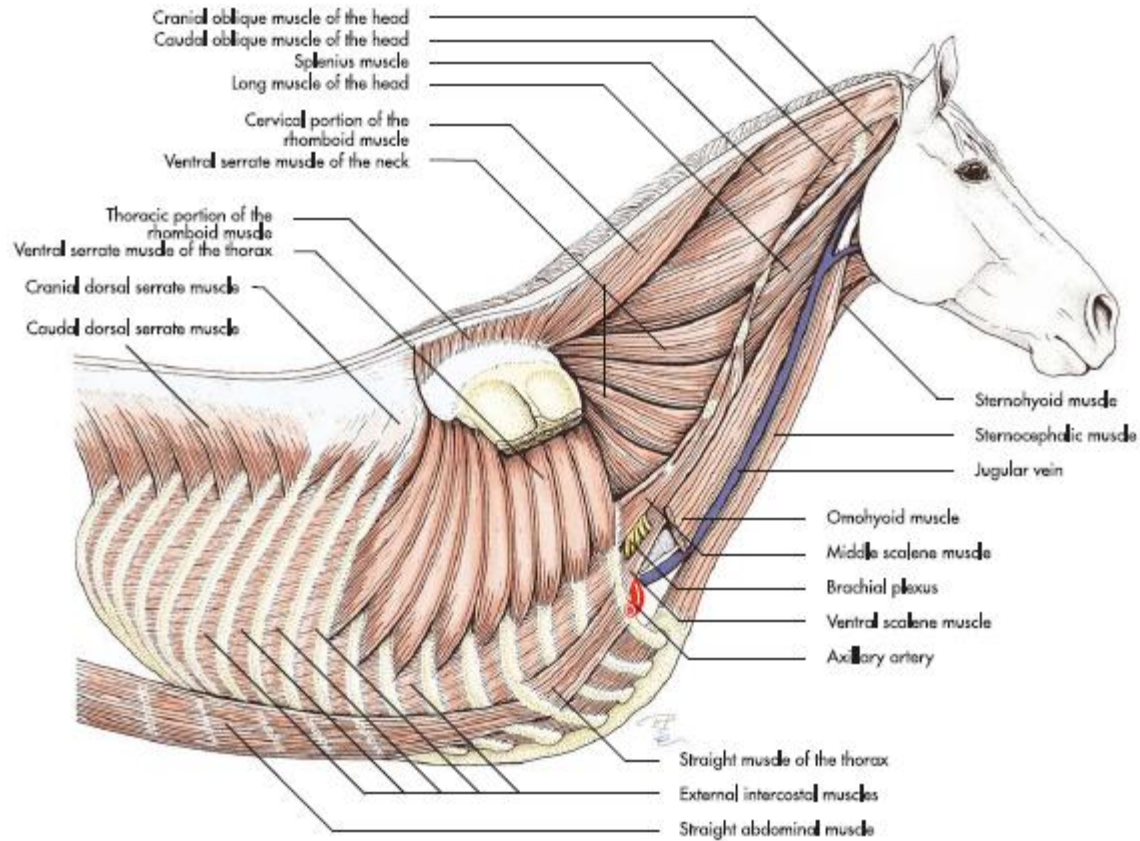
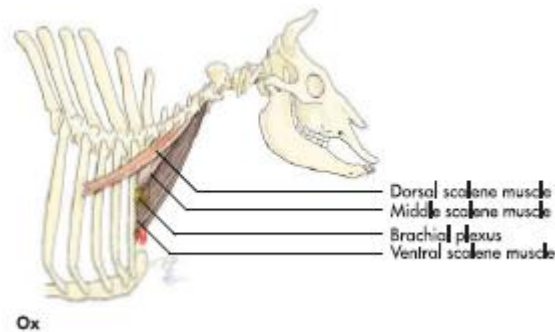


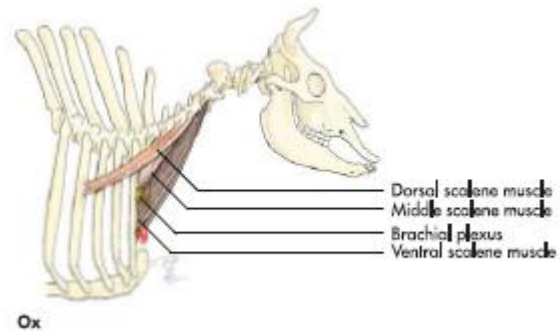
Fig. 3.12 Superficial muscles of the trunk of the horse (schematic); fig. based on data from Ghetie, 1954.

- **Ru, su**
- **M. scalenus ventralis**
- **M. scalenus dorsalis (nema kod ov)**

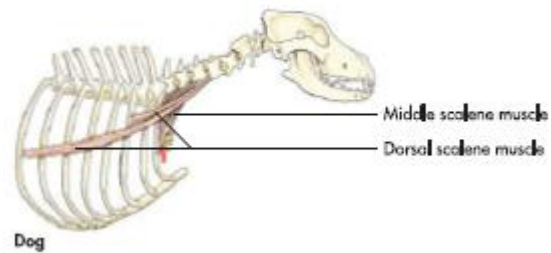
- M. scalenus ventralis:
- O: prima costae
- I: processus transversus (C₃ – C₇)



- M. scalenus dorsalis:
- O: 2-4. rebra (facies lateralis)
- I: processus transversus (C₃ – C₆)



- Car
- **M. scalenus dorsalis**
- **M. scalenus medius**



- F: učvršćuje i savija vrat
- I: nn. cervicales

M. longus colli

- **Pars cervicalis**
- **Pars thoracica**

- Pars cervicalis:
- O: corpus et processus transversus (C₂ – C₇)
- I: tuberculum ventrale (atlas)

- Pars thoracica:
- O: corpus (Th₁ – Th₆)
- I: corpus et processus transversus (C₆ – C₇)

- F: savija vrat
- I: nn. cervicales

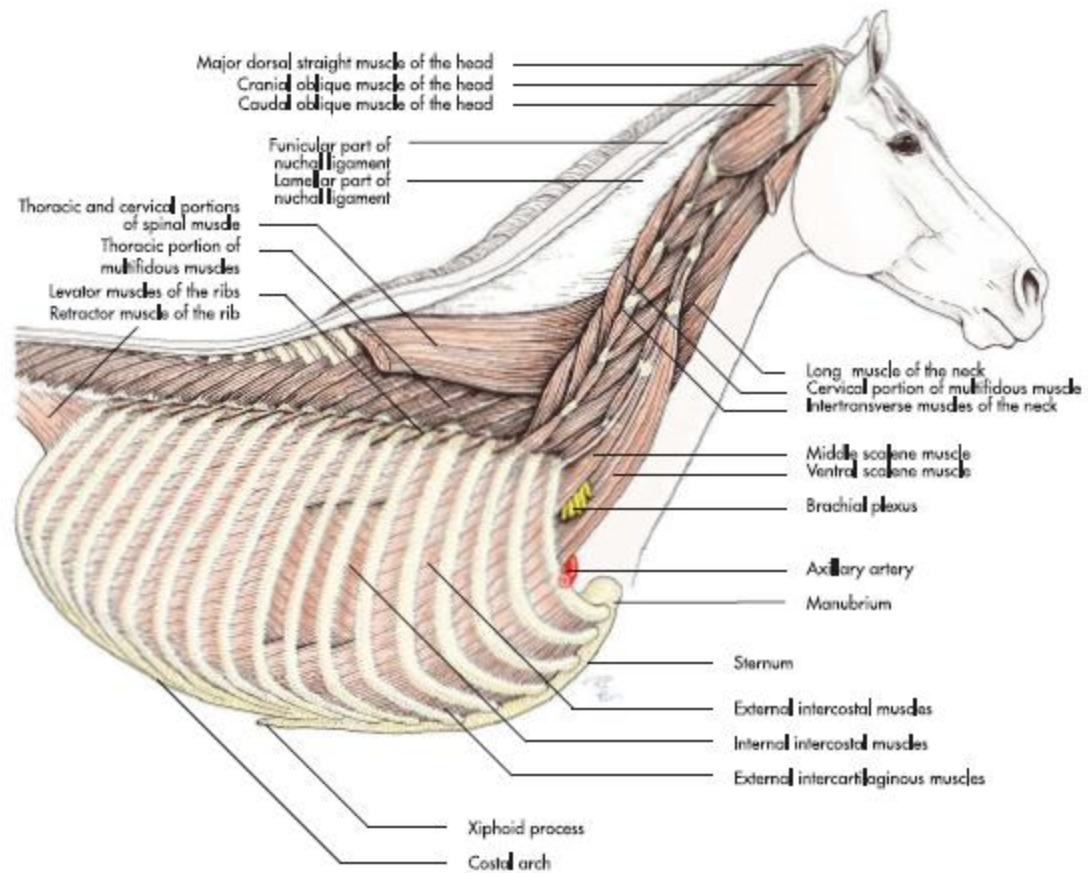


Fig. 3.15 Deep layer of the trunk musculature of the horse (schematic); fig. based on data from Ellenberger and Baum, 1943.

M. longus capitis

- O: processus transversus ($C_2 - C_5$, $C_2 - C_6$)
- I: tuberculum musculare (os occipitale)
- F: flexio articulatio atlantooccipitalis
- I: nn. cervicales

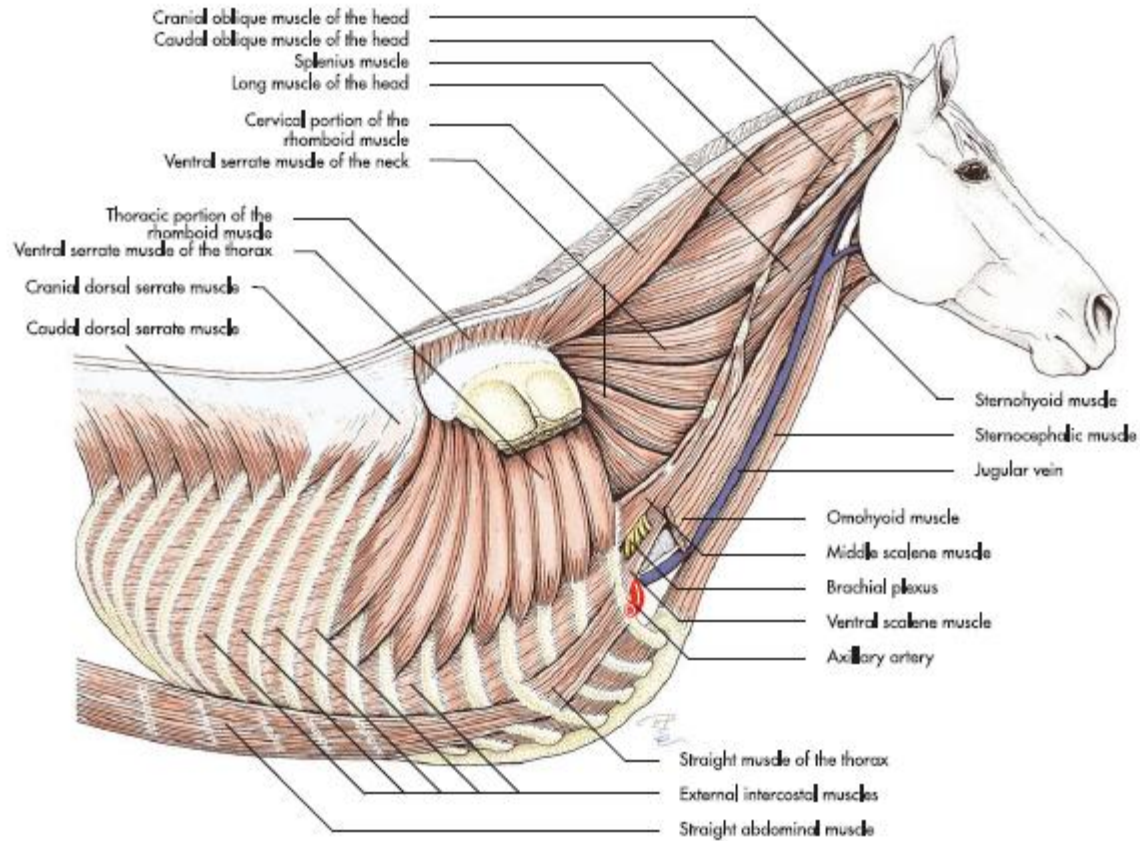


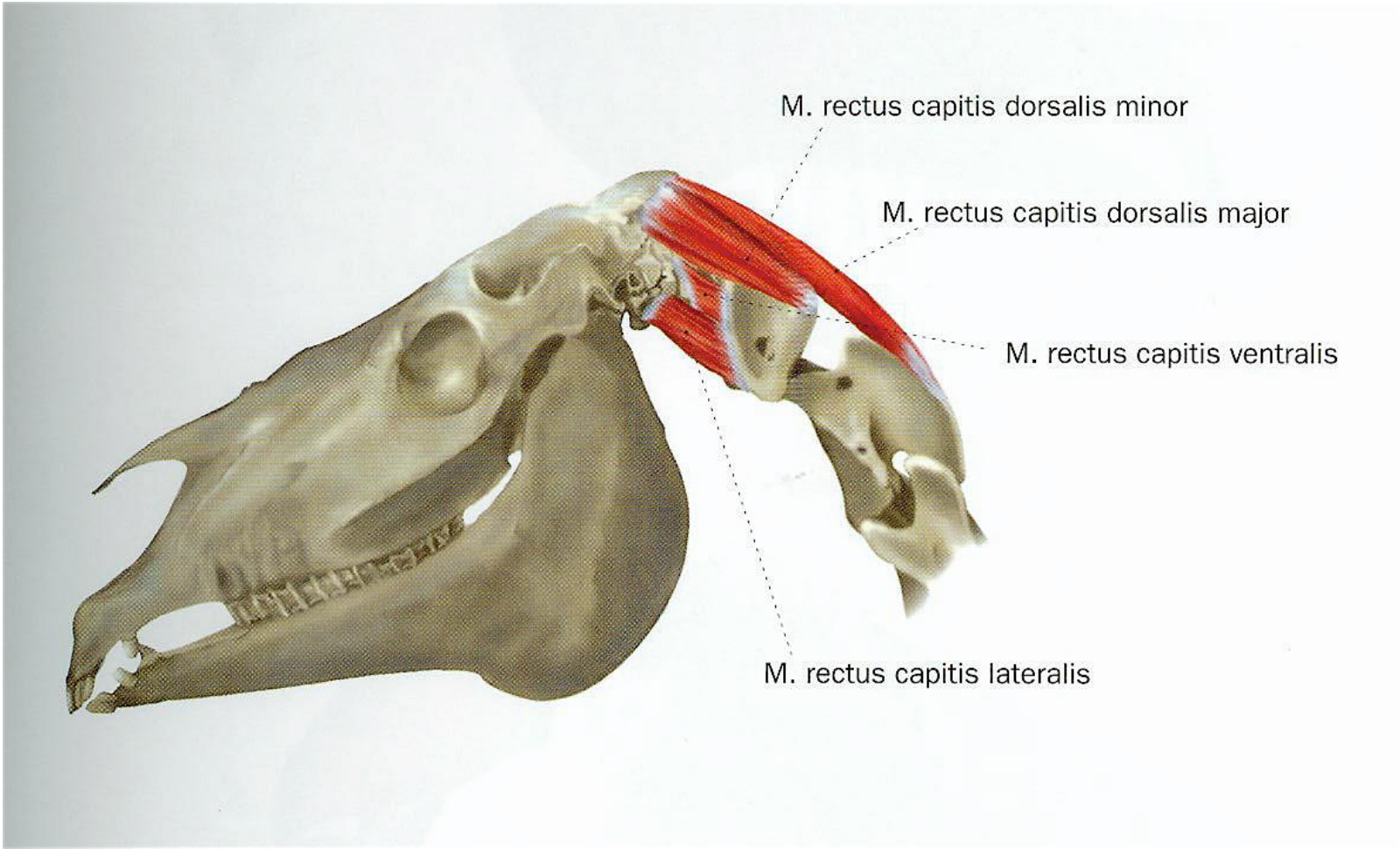
Fig. 3.12 Superficial muscles of the trunk of the horse (schematic); fig. based on data from Ghetie, 1954.

M. rectus capitis ventralis

- O: arcus ventralis (atlas)
- I: pars basilaris (os occipitale)
- F: flexio articulatio atlantooccipitalis
- I: n. cervicalis I

M. rectus capitis lateralis

- O: arcus ventralis, ala atlantis
- I: processus jugularis
- F: flexio articulatio atlantooccipitalis
- I: n. cervicalis I



M. rectus capitis dorsalis minor

M. rectus capitis dorsalis major

M. rectus capitis ventralis

M. rectus capitis lateralis

Mm. intertransversarii cervicis

- Prostor između zglobnih i transverzalnih izdanaka, od C₂.
- M. intertransversarius longus (**bo, su**) → ala atlantis
- F: savija vrat
- I: nn. cervicales

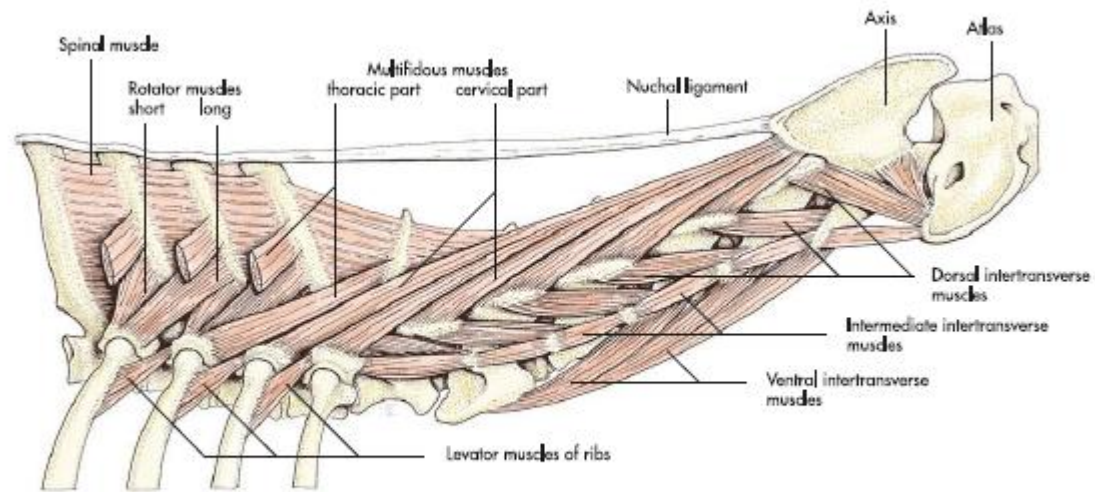


Fig. 3.16 Deep musculature of the neck of the dog (schematic).

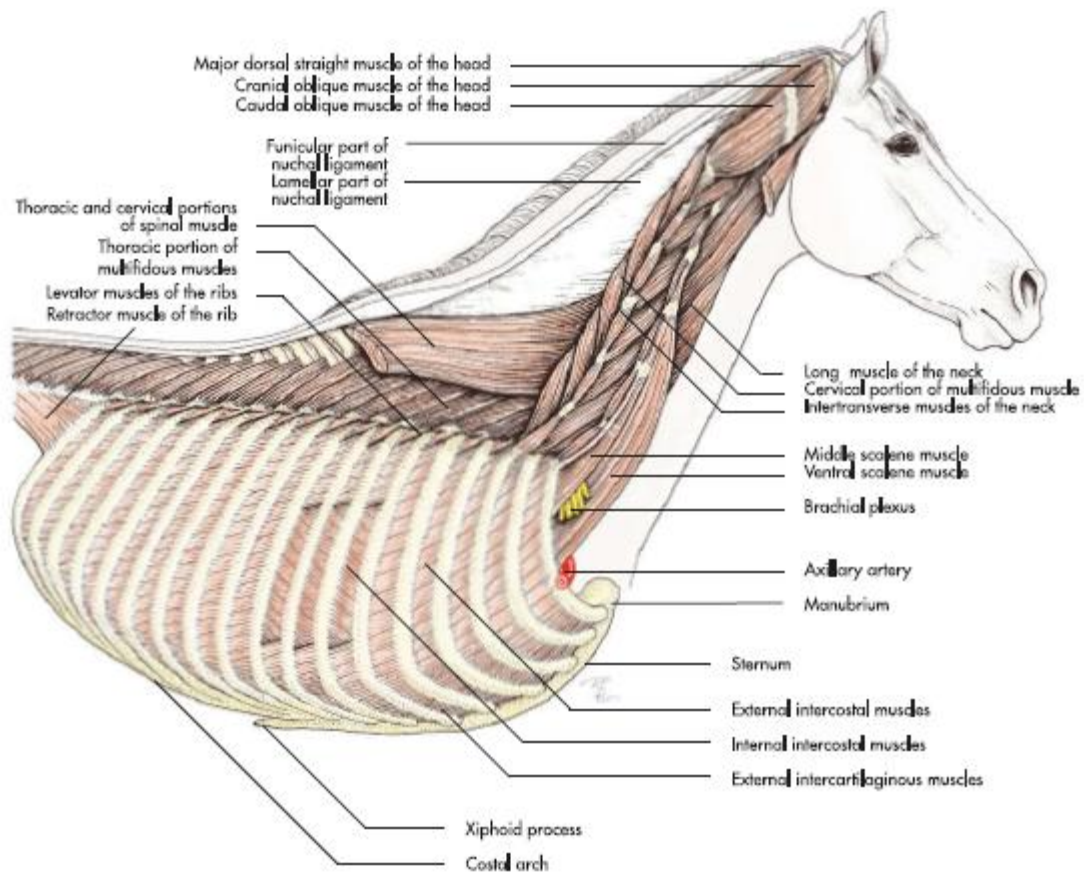


Fig. 3.15 Deep layer of the trunk musculature of the horse (schematic); fig. based on data from Ellenberger and Baum, 1943.

MIŠIĆI DORZALNOG DELA VRATA

- **M. splenius**
- **M. trapezius cervicis**
- **M. longissimus capitis**
- **M. longissimus atlantis**
- **M. rhomboideus cervicis**
- **M. serratus ventralis cervicis**

- **Mm. multifidi cervicis**
- **M. semispinalis capitis**
- **M. obliquus capitis caudalis**
- **M. obliquus capitis cranialis**
- **M. rectus capitis dorsalis major**
- **M. rectus capitis dorsalis minor**

M. trapezius cervicis

- **Eq**
- **O:** funiculus nuchae (C₂ – Th₃)
- **I:** spina scapulae

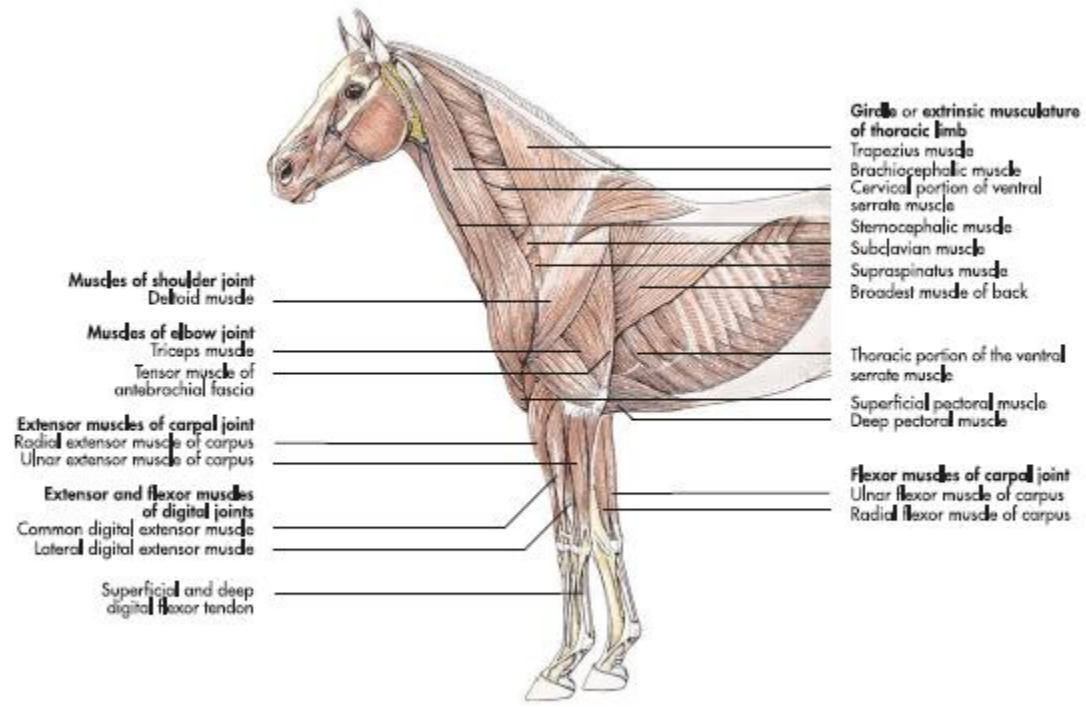


Fig. 4.76 Superficial layers of the extrinsic and intrinsic musculature of the thoracic limb of the horse (schematic).

- **Ru**
- O: C₂ – Th₂
- I: spina scapulae

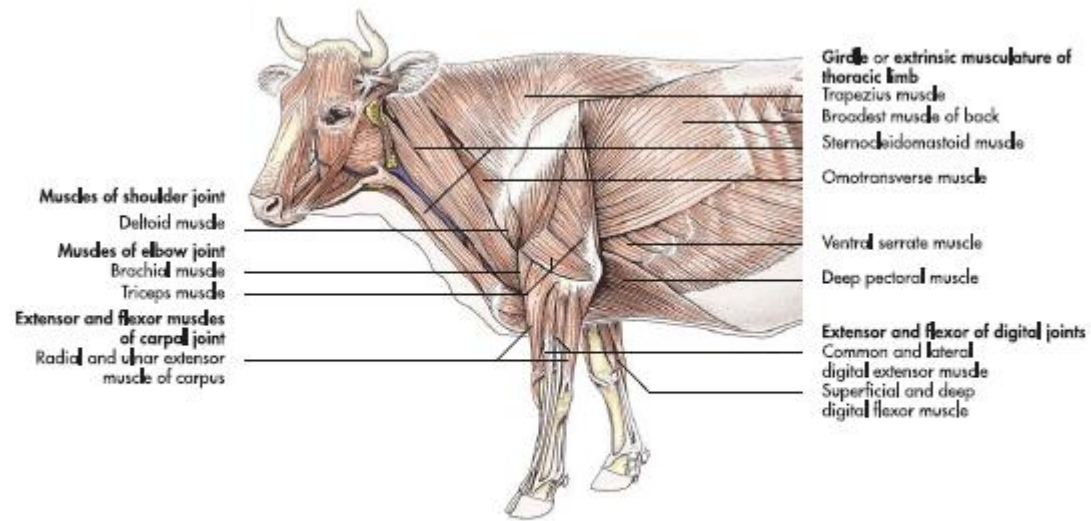


Fig. 4.75 Superficial layers of the extrinsic and intrinsic musculature of the thoracic limb of the ox (schematic).

- **Su**
- O: os occipitale – Th₁₀
- I: spina scapulae

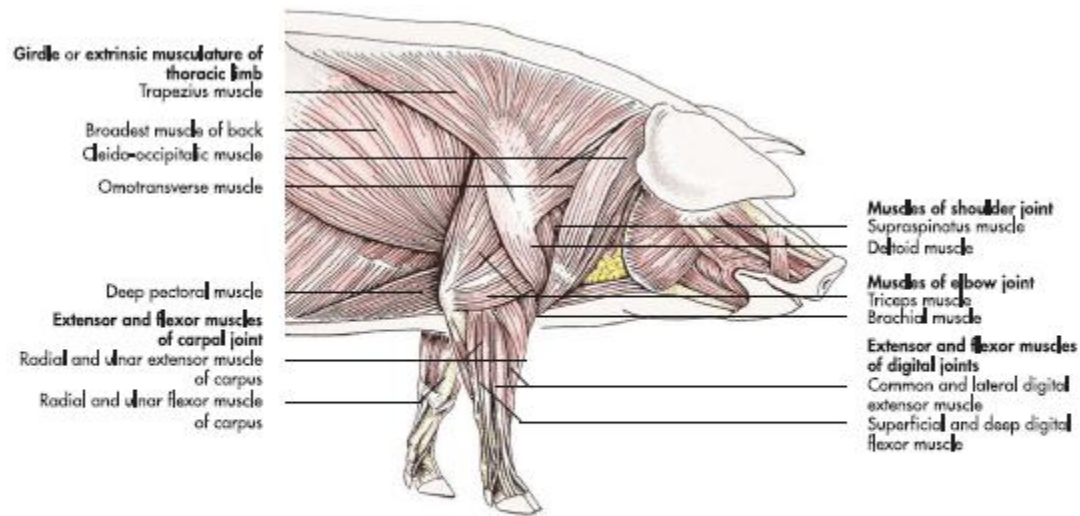


Fig. 4.74 Superficial layers of the extrinsic and intrinsic musculature of the thoracic limb of the pig (schematic).

- **Car**
- O: C₃ – Th₉
- I: spina scapulae

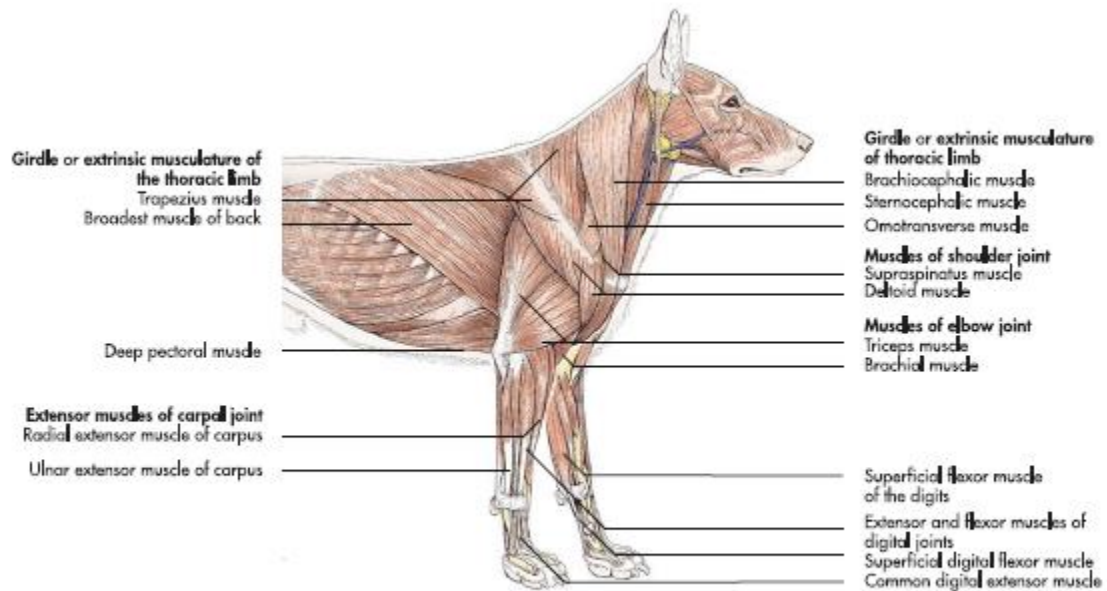
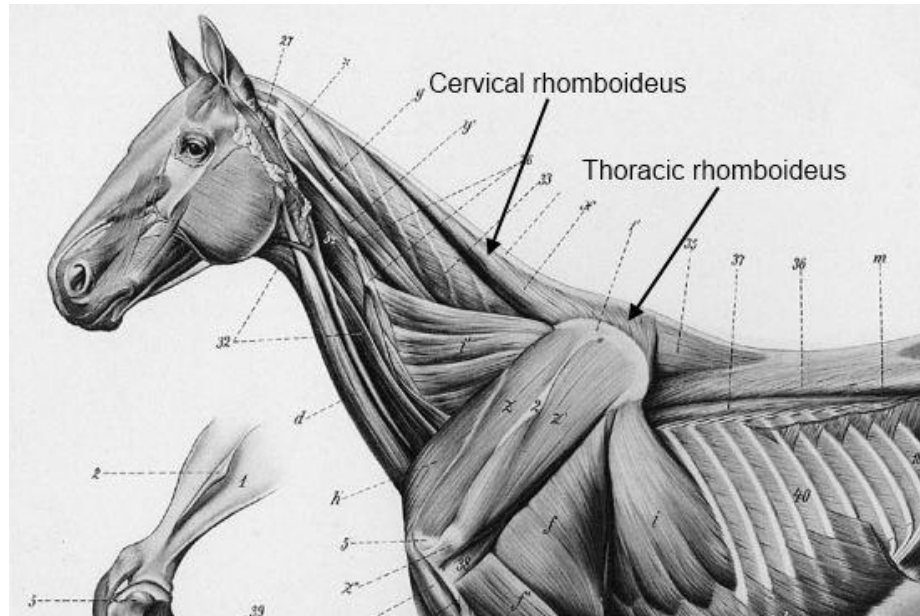


Fig. 4.73 Superficial layers of the extrinsic and intrinsic musculature of the thoracic limb of the dog (schematic).

- F: učvršćuje lopaticu za trup i podiže ceo ekstremitet
- I: n. accessorius

M. rhomboideus cervicis

- **Eq**
- **O:** funiculus nuchae (C₂ – Th₂) – Th₇
- **I:** cartilago scapulae, basis scapulae



- **Ru**
- O: lig. nuchae (C₂ – Th₂) – Th₇
- I: cartilago scapulae, basis scapulae

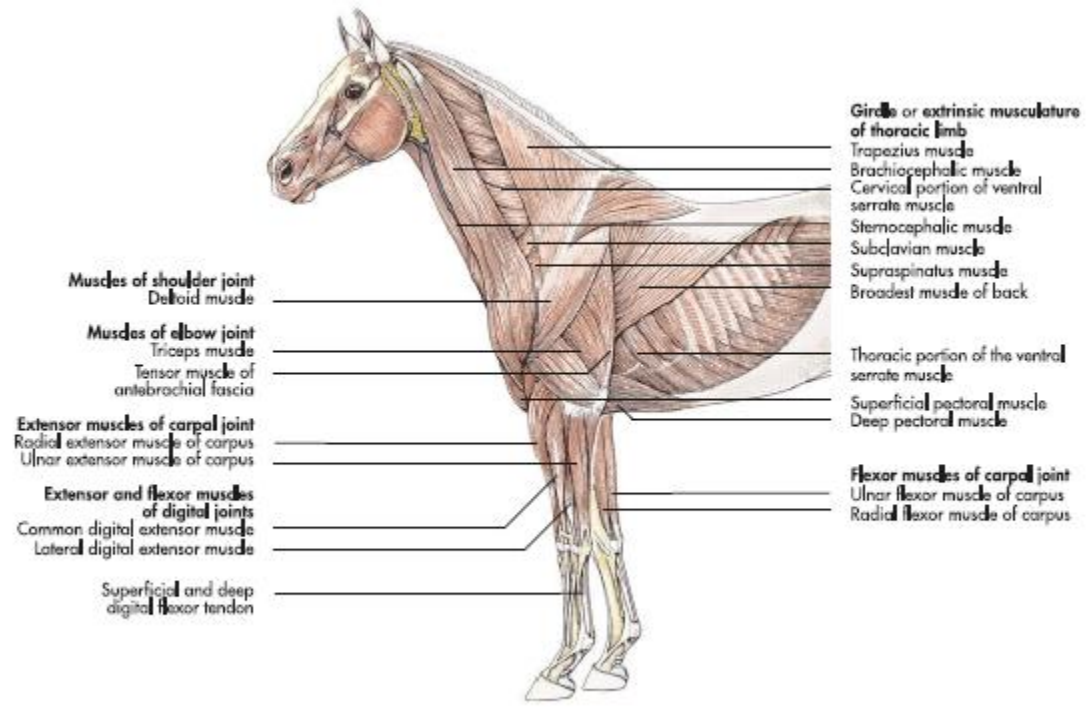
- **Su**
- O: C₂ – Th₆ (Th₁₀)
- I: cartilago scapulae, basis scapulae

- **Car**
- O: C₂ – Th₃
- I: cartilago scapulae, spina scapulae

- F: pričvršćuje lopaticu za trup, podiže prednji ekstremitet
- I: nn. cervicales et thoracales

M. serratus ventralis cervicis

- Eq, Ru, Car
- O: processus transversus (C₃ – C₇)
- I: angulus cranialis et facies serrata scapulae



Muscles of shoulder joint
Deltoid muscle

Muscles of elbow joint
Triceps muscle
Tensor muscle of antibrachial fascia

Extensor muscles of carpal joint
Radial extensor muscle of carpus
Ulnar extensor muscle of carpus

Extensor and flexor muscles of digital joints
Common digital extensor muscle
Lateral digital extensor muscle

Superficial and deep digital flexor tendon

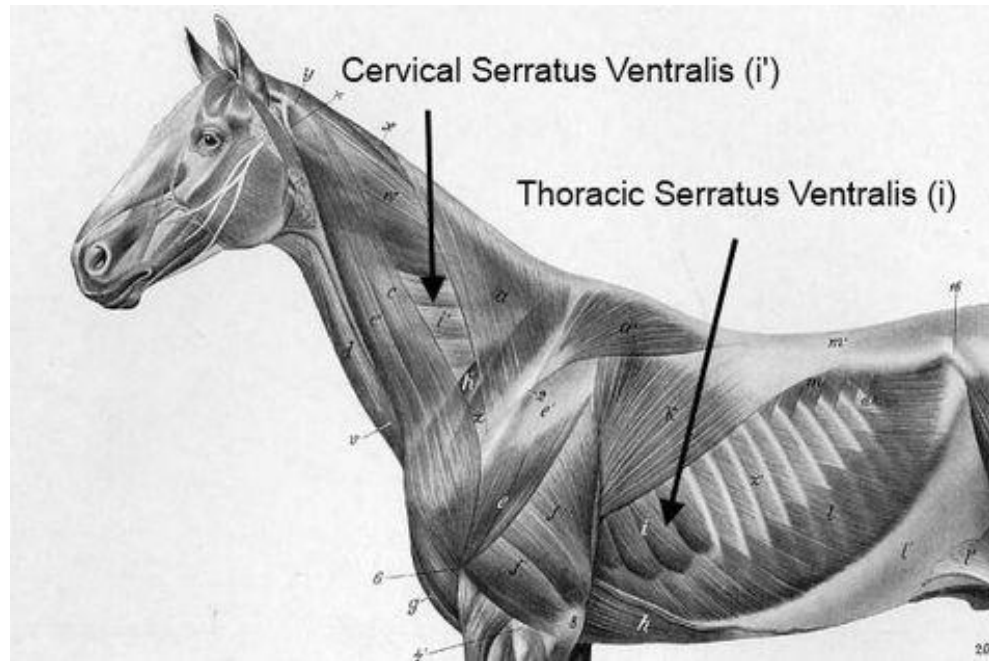
Girdle or extrinsic musculature of thoracic limb

Trapezius muscle
Brachiocephalic muscle
Cervical portion of ventral serrate muscle
Sternocephalic muscle
Subclavian muscle
Supraspinatus muscle
Broadest muscle of back

Thoracic portion of the ventral serrate muscle
Superficial pectoral muscle
Deep pectoral muscle

Flexor muscles of carpal joint
Ulnar flexor muscle of carpus
Radial flexor muscle of carpus

Fig. 4.76 Superficial layers of the extrinsic and intrinsic musculature of the thoracic limb of the horse (schematic).



- **Su**
- O: processus transversus ($C_1 - C_7$)
- I: angulus cranialis et facies serrata scapulae

- F: podupire trup, vuče trup i lopaticu napred i nazad
- I: nn. cervicales

M. splenius

- **M. splenius capitis**
- **M. splenius cervicis** (nema kod ca)

- M. splenius capitis
- O: fascia spinotransversalis, lig. nuchae
- I: os occipitale, processus mastoideus

- M. splenius cervicis
- O: fascia spinothoracalis, lig. nuchae
- I: processus transversus C₃ – C₅ (**eq**), ala atlantis et processus transversus epistrophei (**bo**), processus transversus C₂ – C₅ (**ov**), ala atlantis (**su**)

- F: podiže i savija glavu i vrat
- I: nn. cervicales et thoracales



M. longissimus capitis et atlantis

- O: processus transversus Th₁ – Th₂, proc. articularis C₄ – C₆
- I: processus mastoideus (capitis) et ala atlantis (atlantis)
- F: ispruža vrat i učvršćuje articulatio atlantoaxialis
- I: nn. cervicales

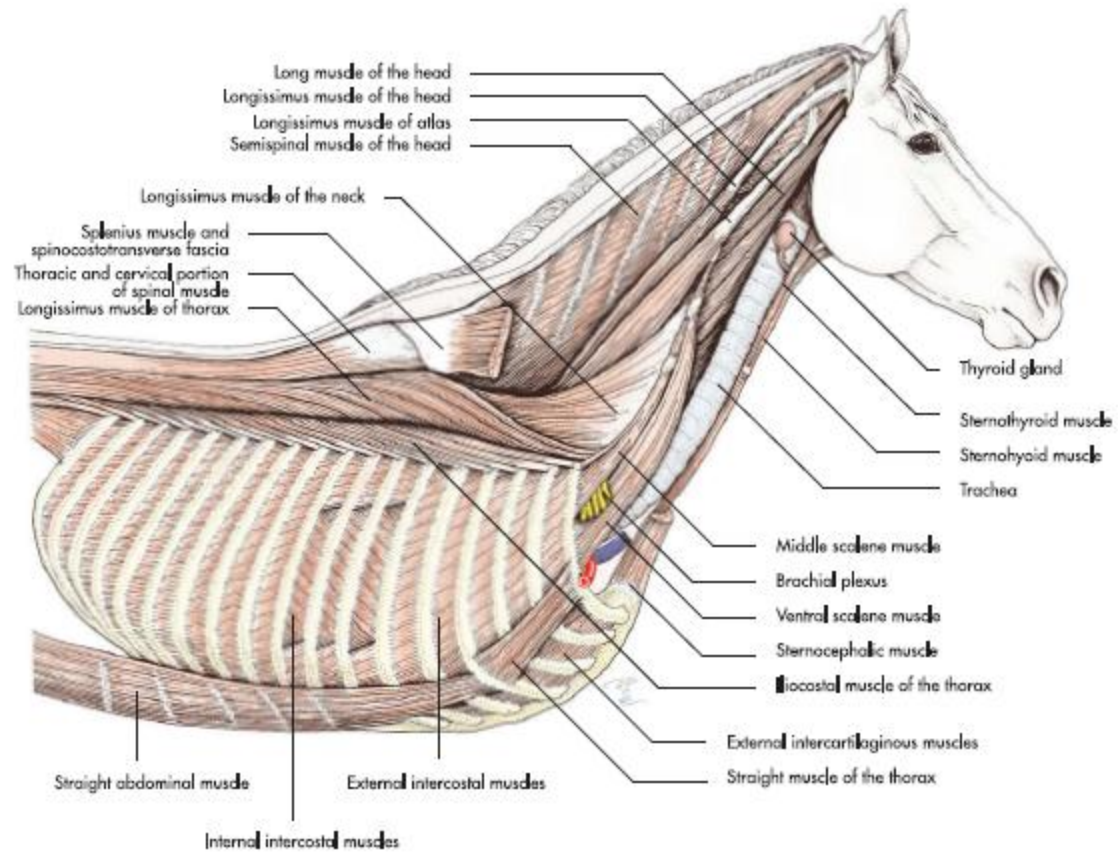


Fig. 3.14 Superficial and middle layers of the trunk musculature of the horse (schematic); fig. based on data from Ghetie, 1954.

M. semispinalis capitis

- Duboko uz lig. nuchae.
- **Intersectiones tendineae**

- O: processus spinosus Th₃ – Th₅, processus transversus Th₁ – Th₇, fascia spinotransversalis
- I: protuberantia occipitalis externa
- F: ispruža i savija glavu i vrat
- I: nn. cervicales

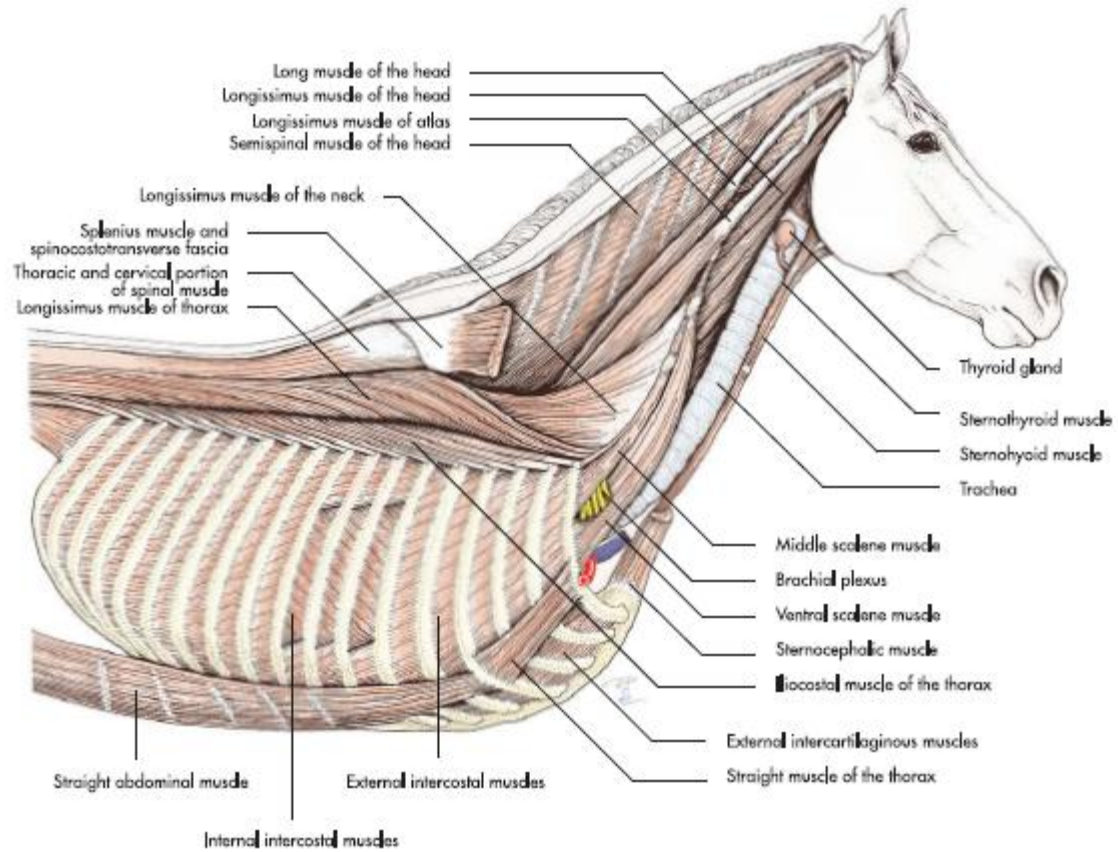


Fig. 3.14 Superficial and middle layers of the trunk musculature of the horse (schematic); fig. based on data from Ghetie, 1954.

Mm. multifidi cervicis

- O: processus articularis C₃ – C₇ et Th₁
- I: processus spinosus vertebrae cervicales
- F: učvršćuje i savija vrat
- I: nn. cervicales

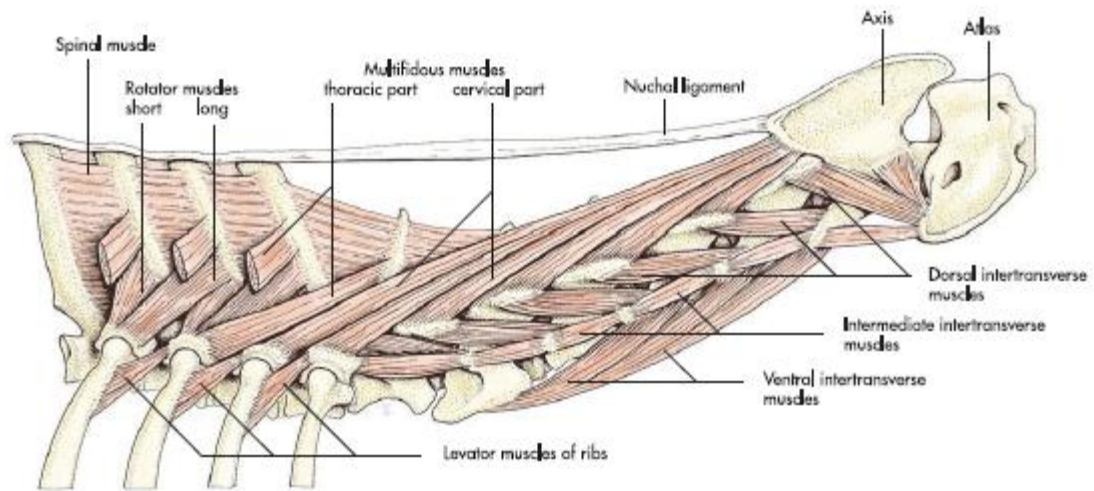


Fig. 3.16 Deep musculature of the neck of the dog (schematic).

M. obliquus capitis cranialis

- O: ala atlantis (facies ventralis)
- I: squama occipitalis et processus jugularis
- F: extensio articulatio atlantoaxialis
- I: n. cervicalis I

M. obliquus capitis caudalis

- O: processus spinosus et processus articularis caudalis (axis)
- I: ala atlantis (facies dorsalis)
- F: extensio et flexio articulatio atlantoaxialis
- I: n. cervicalis II

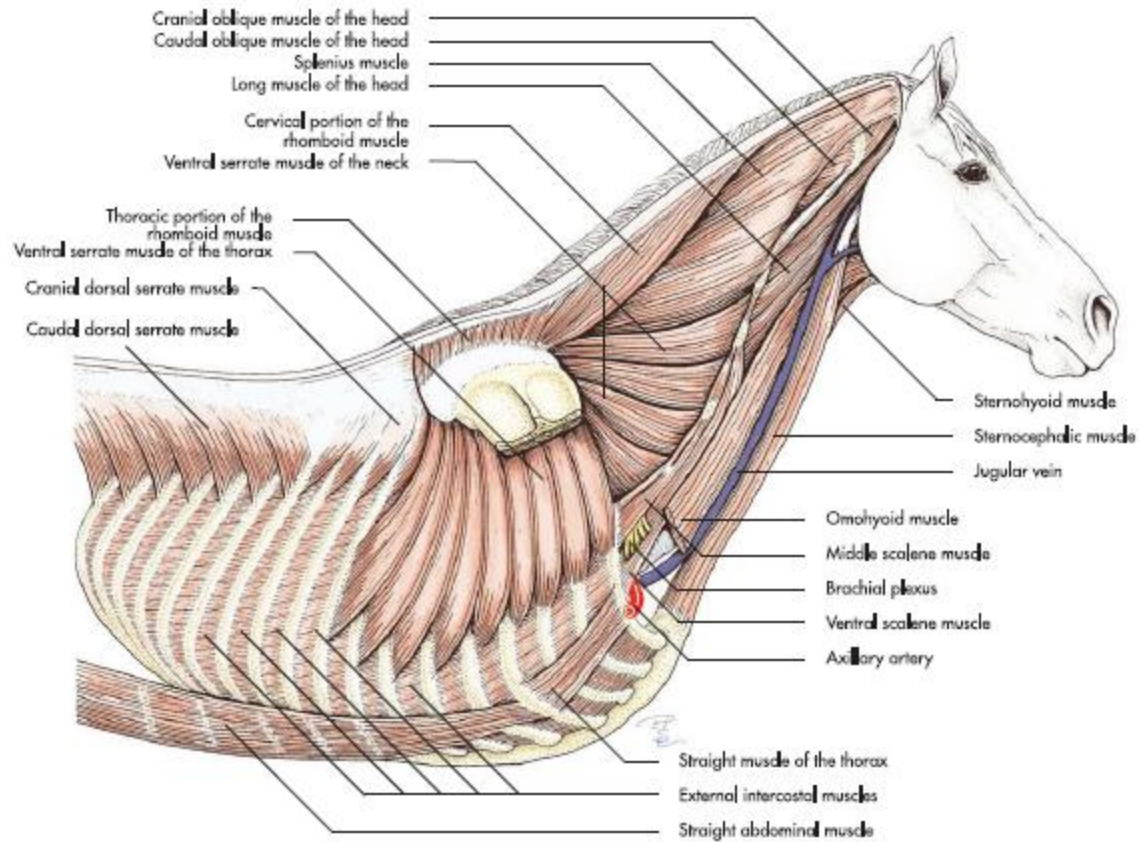


Fig. 3.12 Superficial muscles of the trunk of the horse (schematic); fig. based on data from Ghetie, 1954.

M. rectus capitis dorsalis major

- O: axis
- I: os occipitale
- F. ispružanje glave
- I: n. cervicalis I

M. rectus capitis dorsalis minor

- O: atlas (facies dorsalis)
- I: squama occipitalis
- F: ispružanje glave
- I: n. cervicalis I

